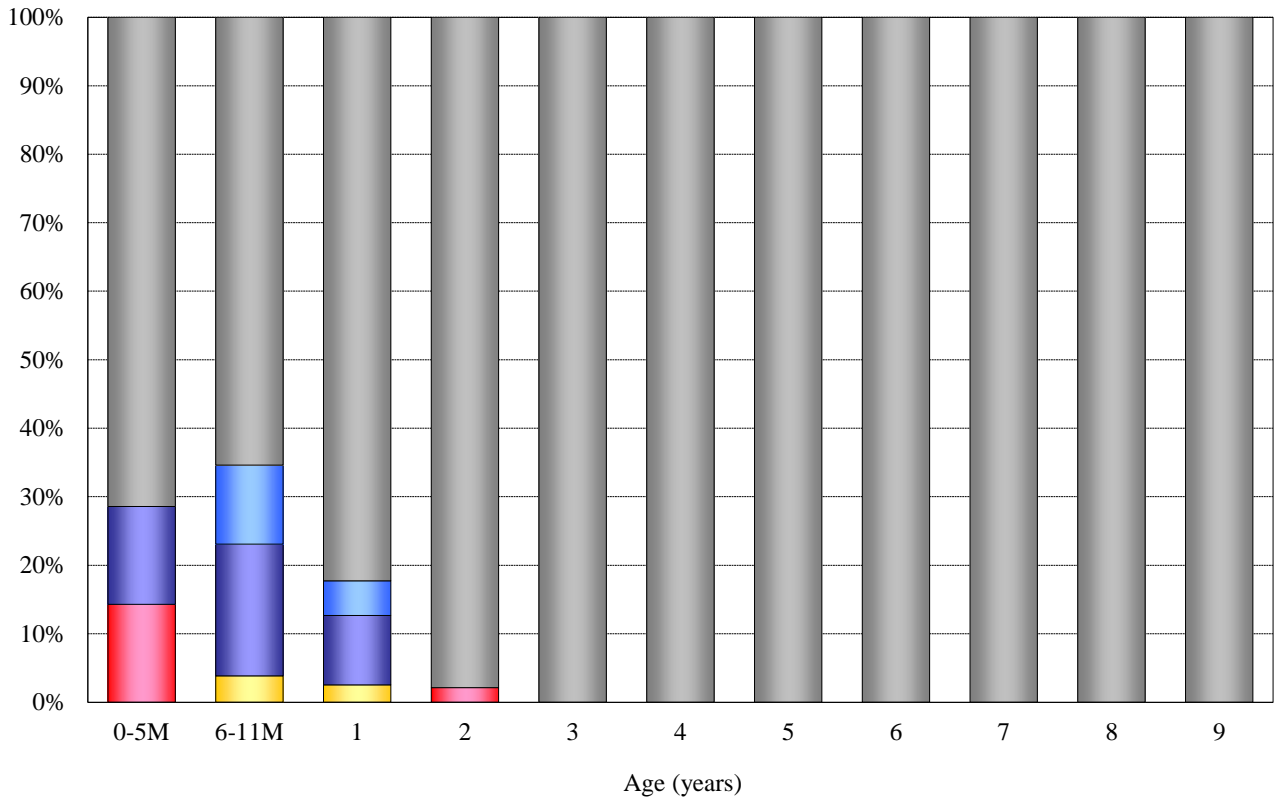


Age distribution of Rotavirus vaccination history in Japan, 2013

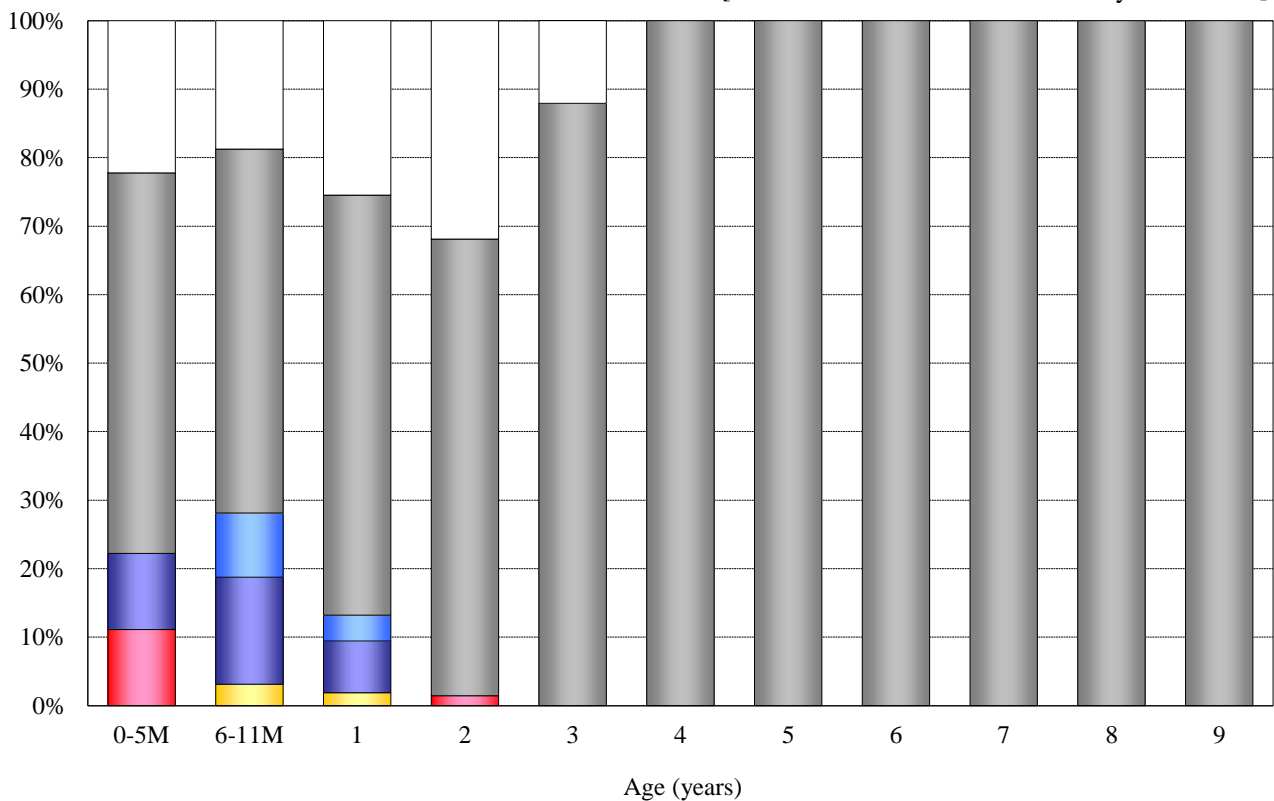
— National Epidemiological Surveillance of Vaccine-Preventable Diseases, 2013 —

(As of June 2020)

[**Without** unknown vaccination history / n = 447]



[**With** unknown vaccination history / n = 511]



■ RV1 1 dose [n=2]
 ■ RV5 1 dose [n=0]
 ■ RV5 2 doses [n=3]
 ■ RV1 2 doses [n=14]
 ■ RV5 3 doses [n=7]
 ■ Unknown doses [n=0]
 ■ Non-vaccinee [n=421]
 ■ Unknown vaccination history [n=64]