

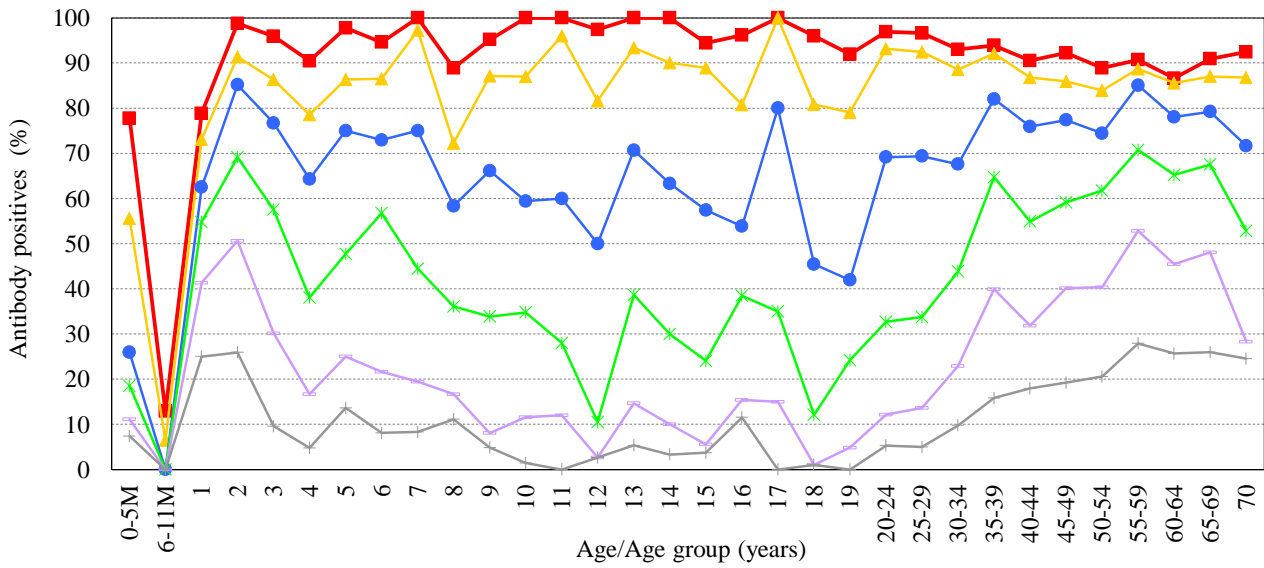
Age distribution of rubella HI antibody positives in Japan, 2021

- National Epidemiological Surveillance of Vaccine-Preventable Diseases, 2021 -

(As of April 2022)

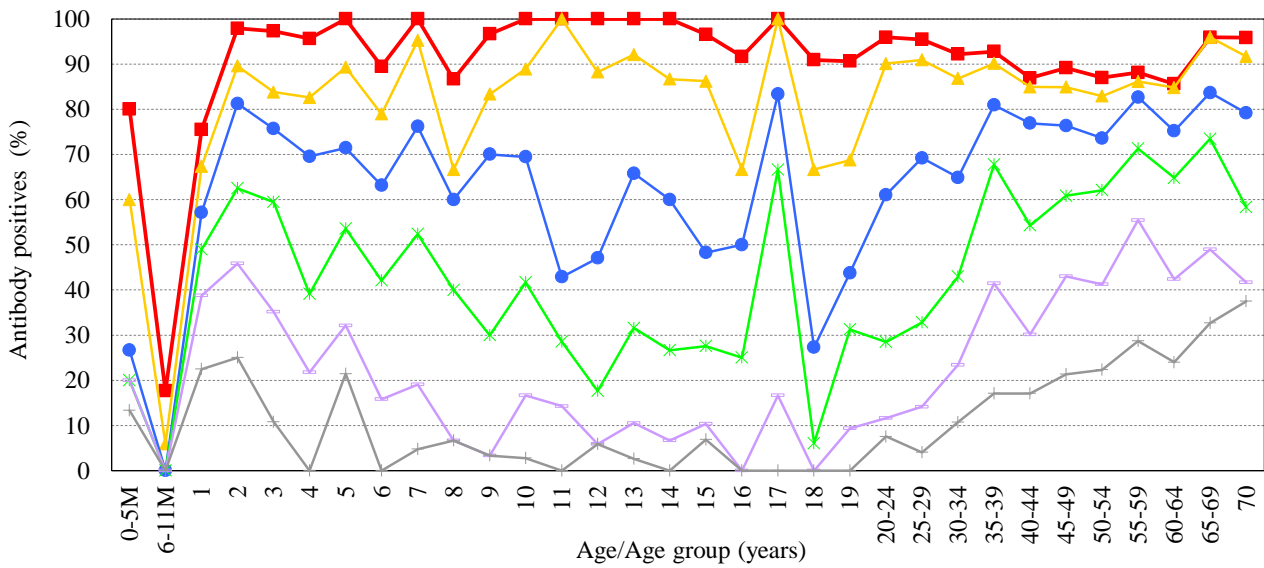
Male & Female

[Examination by hemagglutination inhibition test (HI) ' n = 4,113]



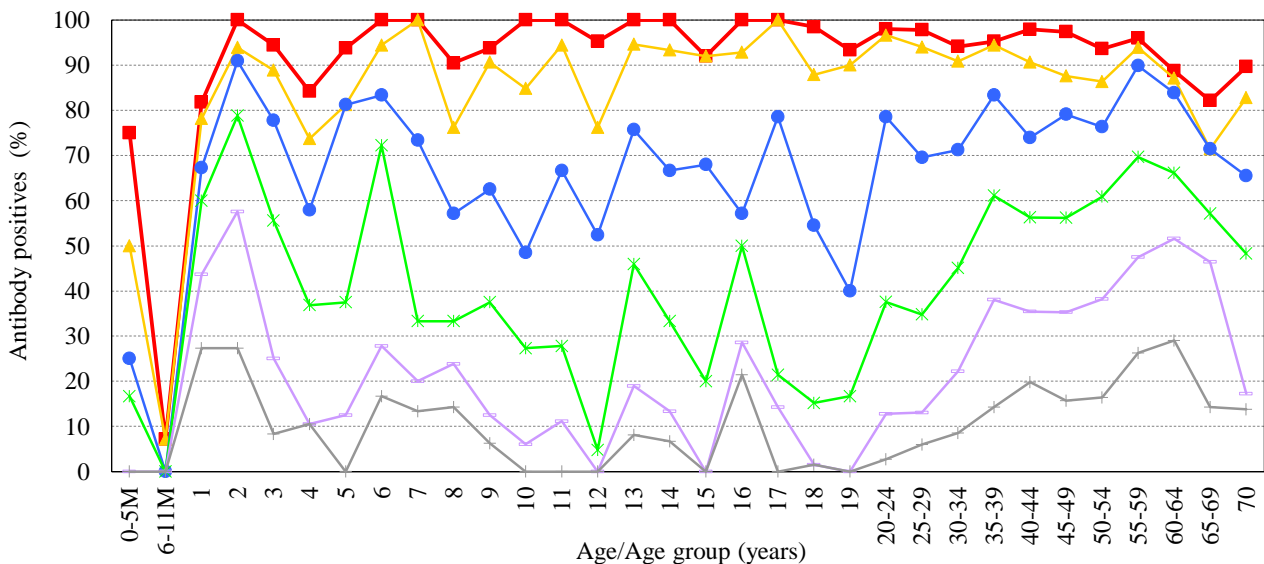
Male

[Examination by hemagglutination inhibition test (HI) ' n = 2,380]



Female

[Examination by hemagglutination inhibition test (HI) ' n = 1,733]



HI titer ■ 1:8 ▲ 1:16 ● 1:32 ✱ 1:64 + 1:128 + 1:256