

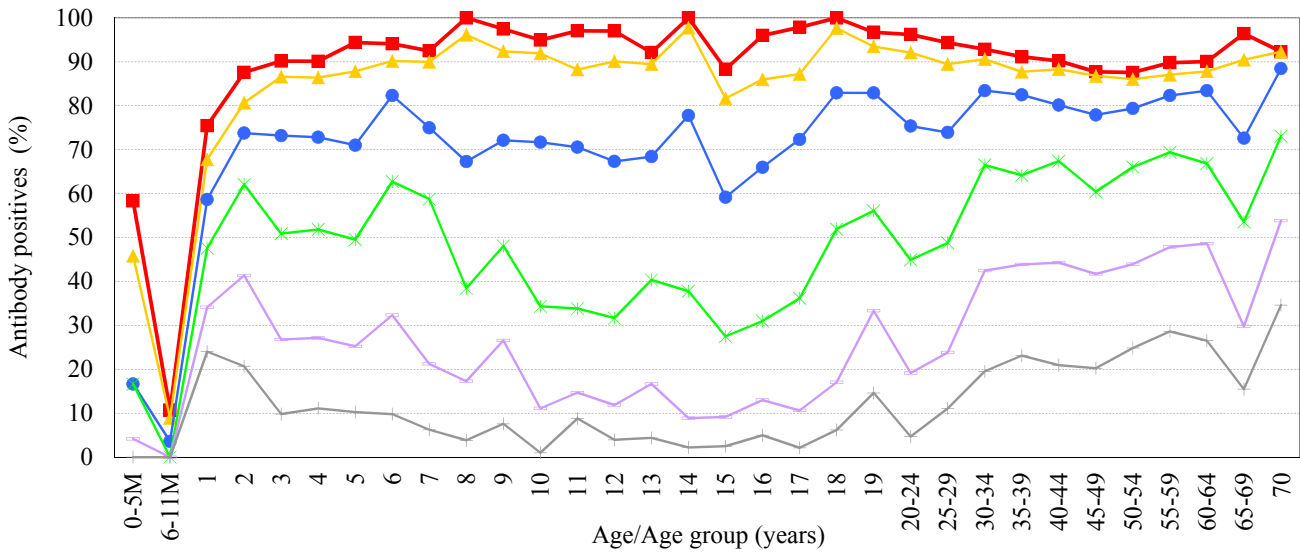
# Age distribution of rubella HI antibody positives in Japan, 2017

- National Epidemiological Surveillance of Vaccine-Preventable Diseases, 2017 -

(As of May 2018)

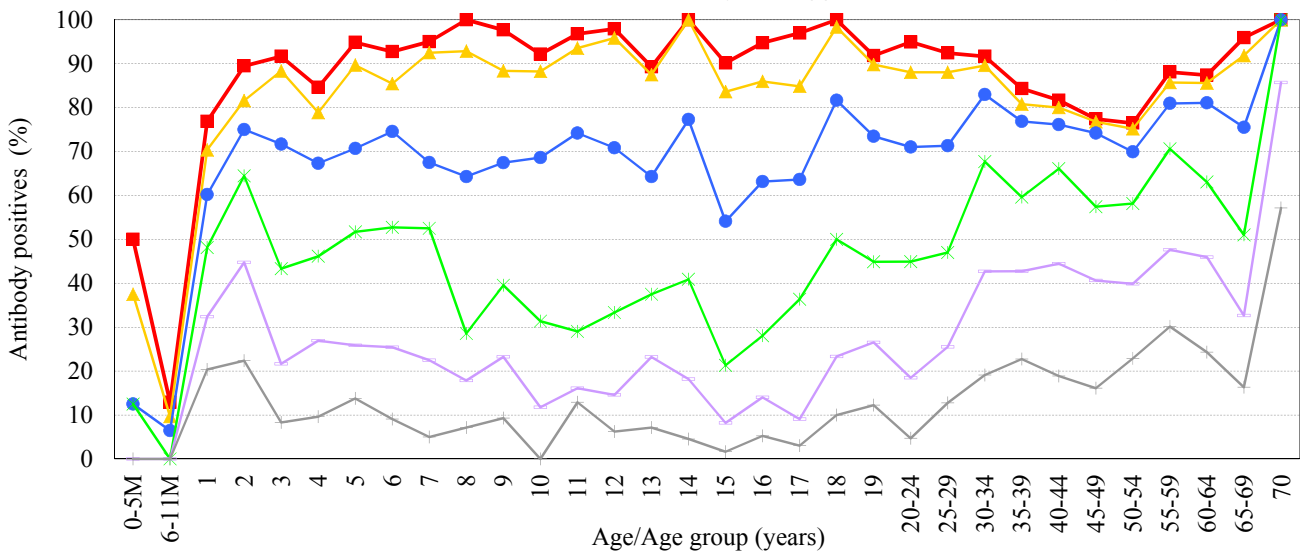
## Male & Female

[ Examination by hemagglutination inhibition test (HI) / n = 5,656 ]



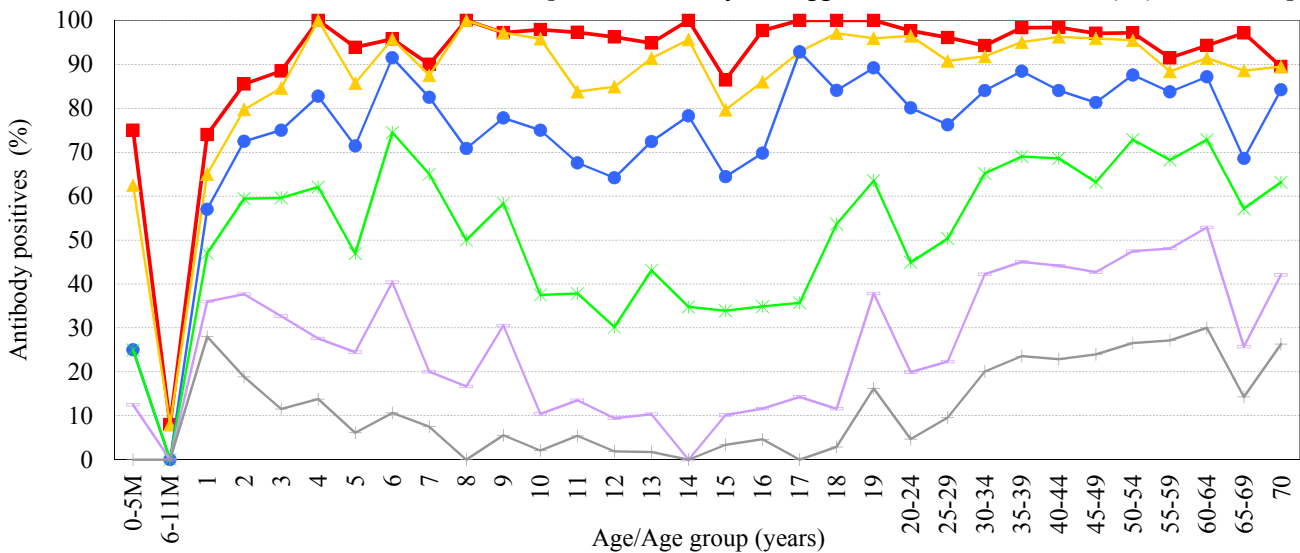
## Male

[ Examination by hemagglutination inhibition test (HI) / n = 2,886 ]



## Female

[ Examination by hemagglutination inhibition test (HI) / n = 2,770 ]



HI titer    1:8    1:16    1:32    1:64    1:128    1:256