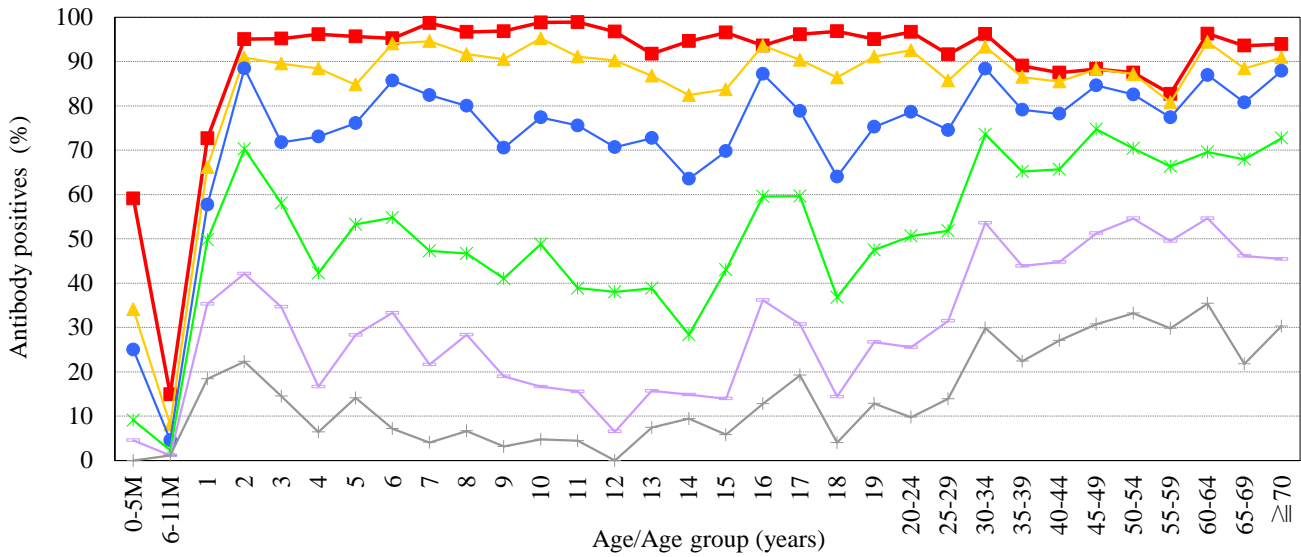


Age distribution of rubella HI antibody positives in Japan, 2015

— National Epidemiological Surveillance of Vaccine-Preventable Diseases, 2015 —

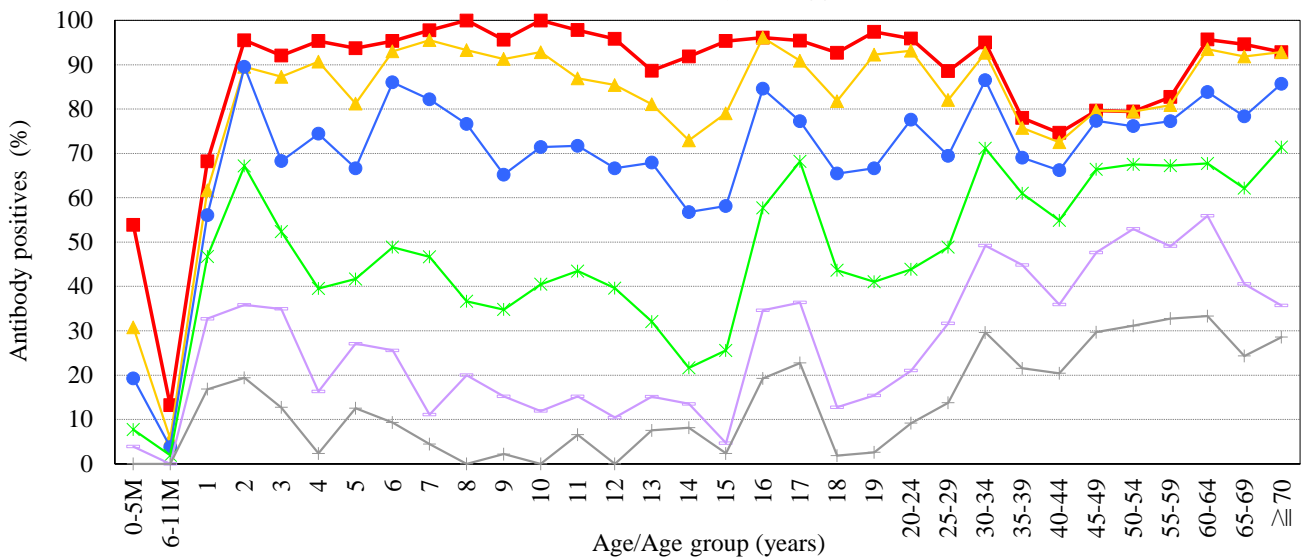
Male & Female

[Examination by hemagglutination inhibition test (HI) / n = 5361]



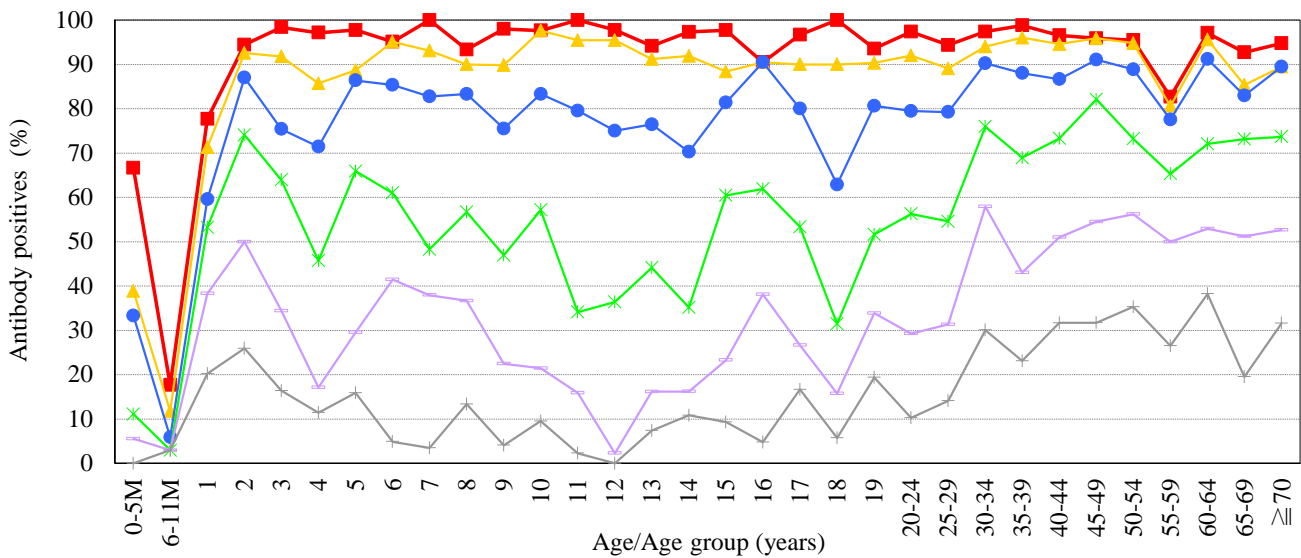
Male

[Examination by hemagglutination inhibition test (HI) / n = 2621]



Female

[Examination by hemagglutination inhibition test (HI) / n = 2740]



HI titer ■ $\geq 1:8$ ▲ $\geq 1:16$ ● $\geq 1:32$ * $\geq 1:64$ × $\geq 1:128$ + $\geq 1:256$