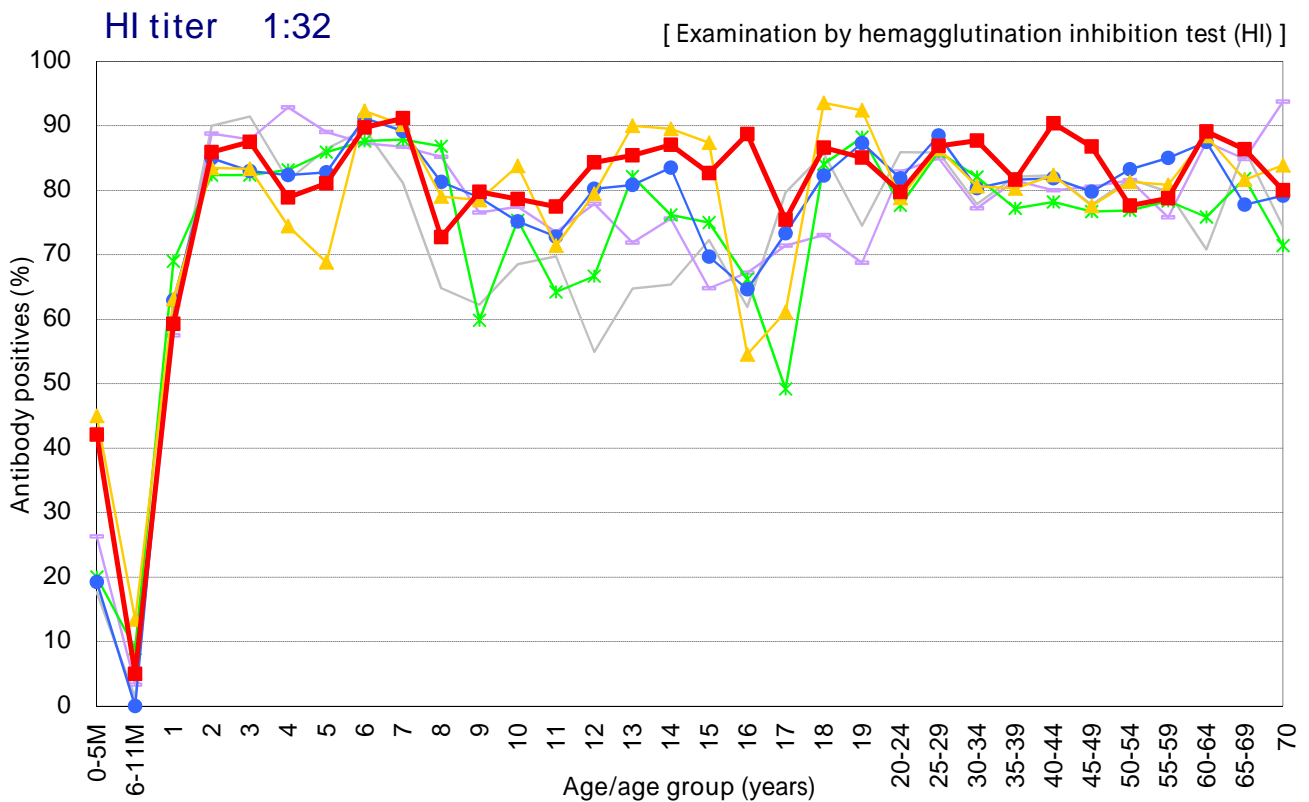
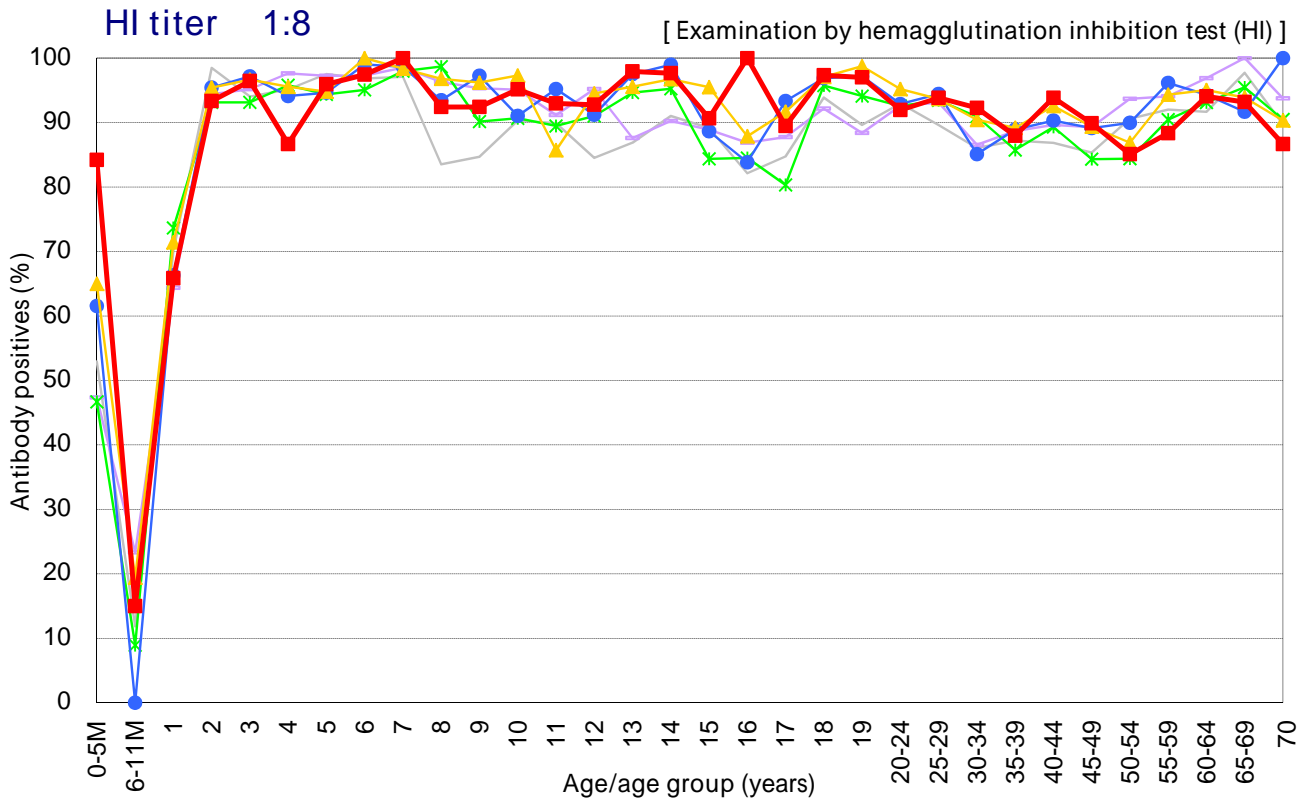


# Age distribution of rubella HI antibody positives in Japan, 2007 ~ 2012

- National Epidemiological Surveillance of Vaccine-Preventable Diseases, 2012 -



Year — 2007 [n=4957] — 2008 [n=4786] — 2009 [n=4557] — 2010 [n=5491] — 2011 [n=5269] — 2012 [n=5094]

