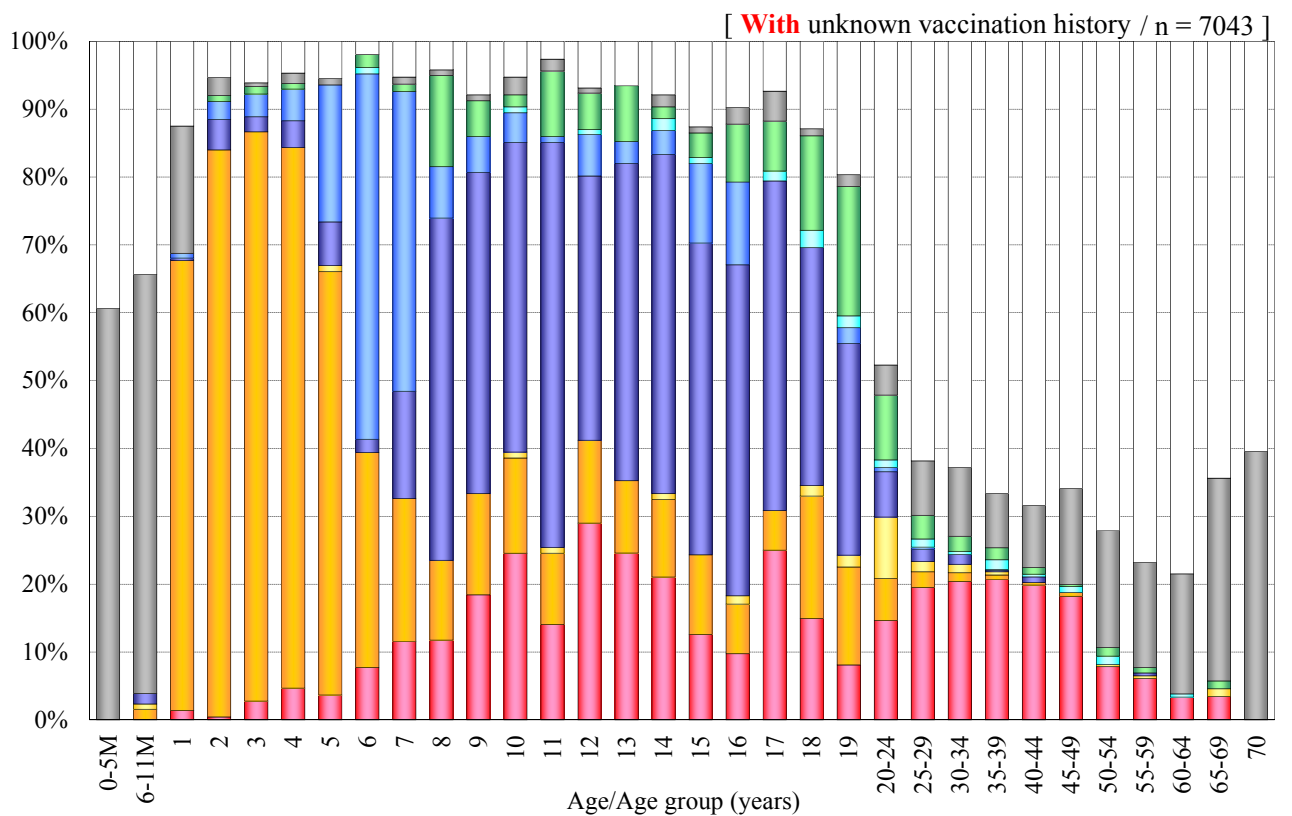
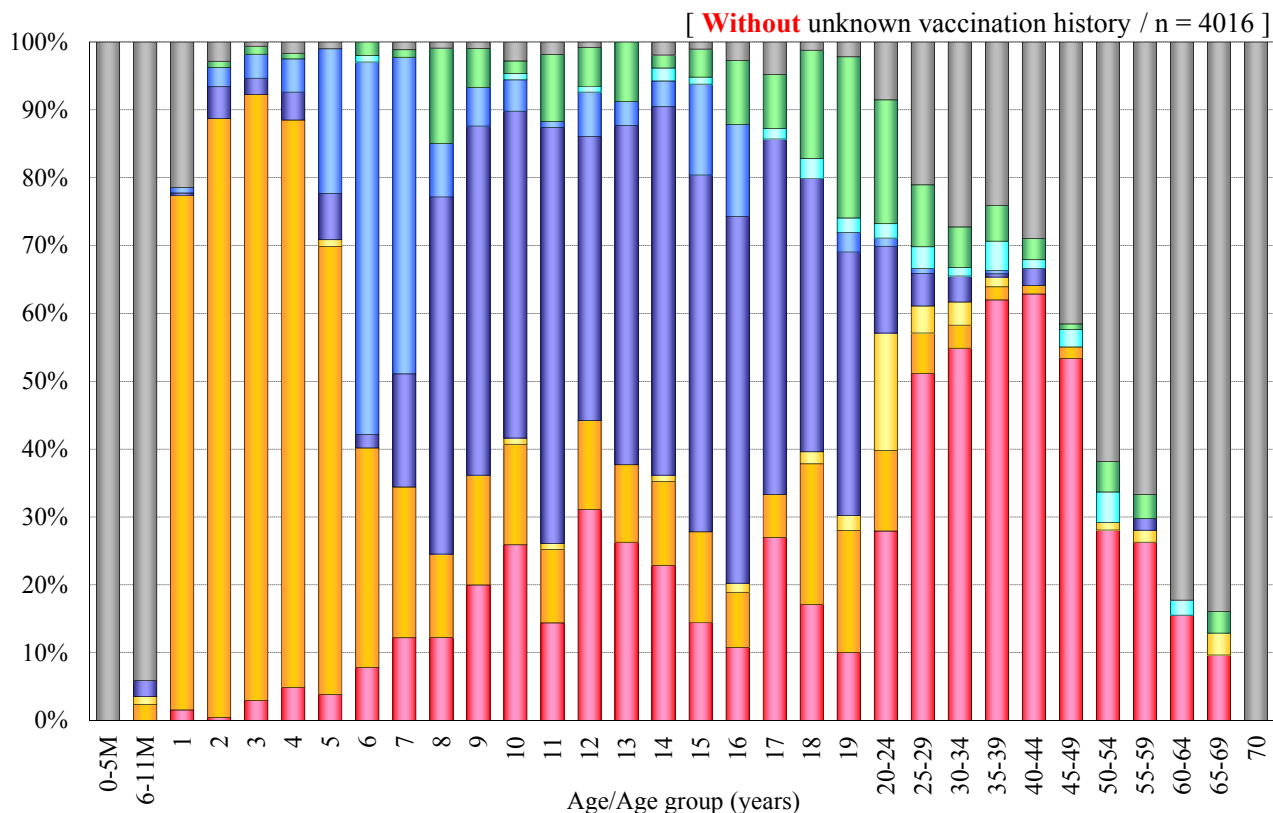


Age distribution of rubella vaccination history in Japan, 2012 **【Male+Female】**

- National Epidemiological Surveillance of Vaccine-Preventable Diseases, 2012 -

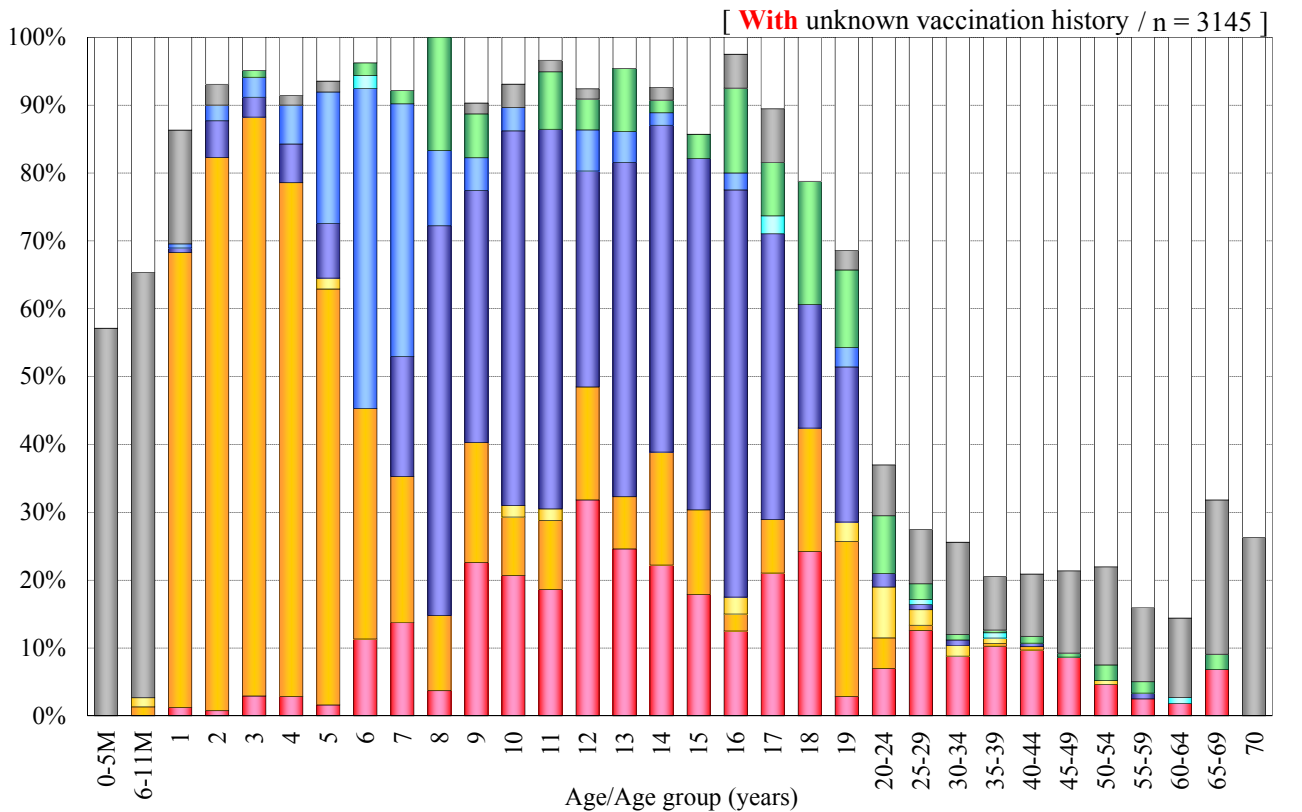
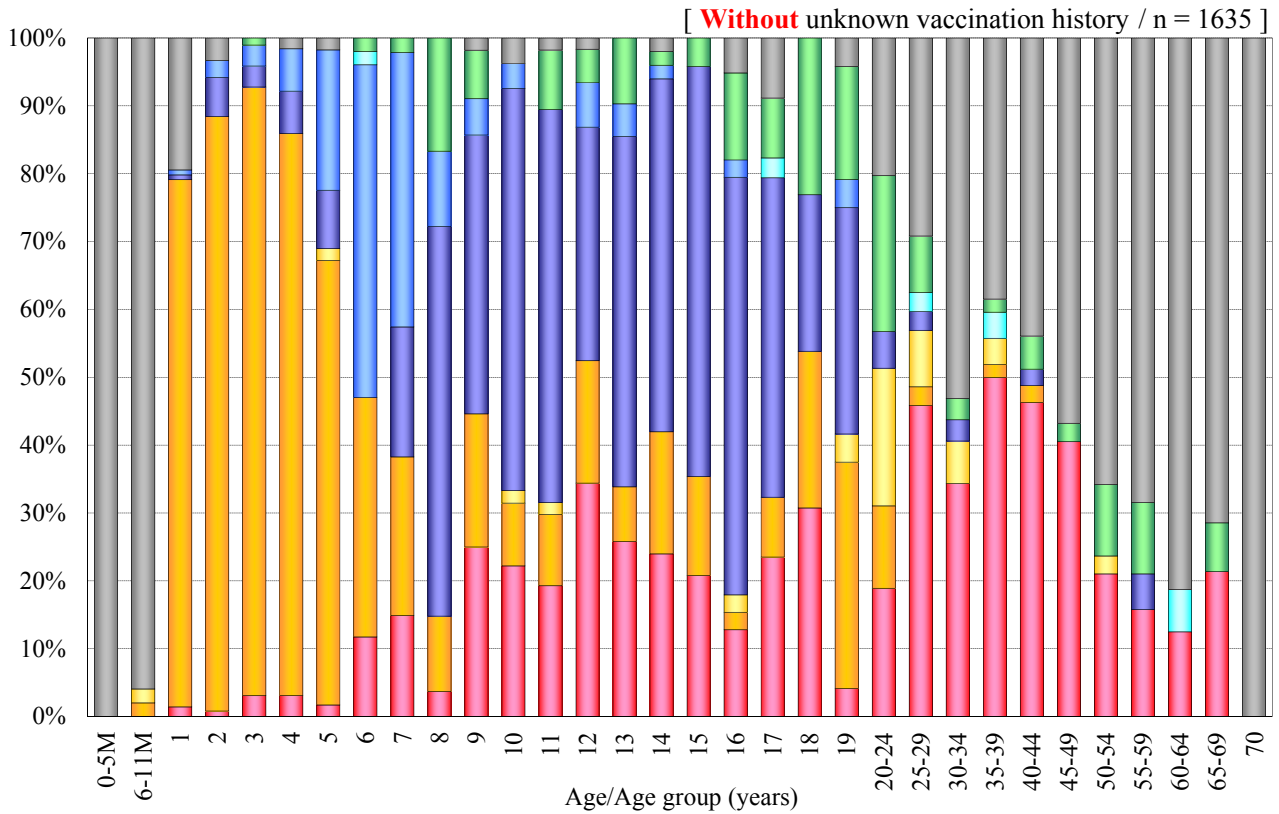


■ 1 dose	■ 1 dose	■ 1 dose	■ 2 doses	■ 2 doses	■ 2 doses	■ Unknown	■ Non-	□ Unknown
[R]	[MR]	[MMR]	[R+MR]	[MR+MR]	[R+R]	doses	vaccinee	vaccination history
[n=984]	[n=1009]	[n=93]	[n=760]	[n=211]	[n=52]	[n=259]	[n=648]	[n=3027]

R : rubella vaccine / MR : measles-rubella combined vaccine
MMR : measles-mumps-rubella combined vaccine

Age distribution of rubella vaccination history in Japan, 2012 【Male】

- National Epidemiological Surveillance of Vaccine-Preventable Diseases, 2012 -

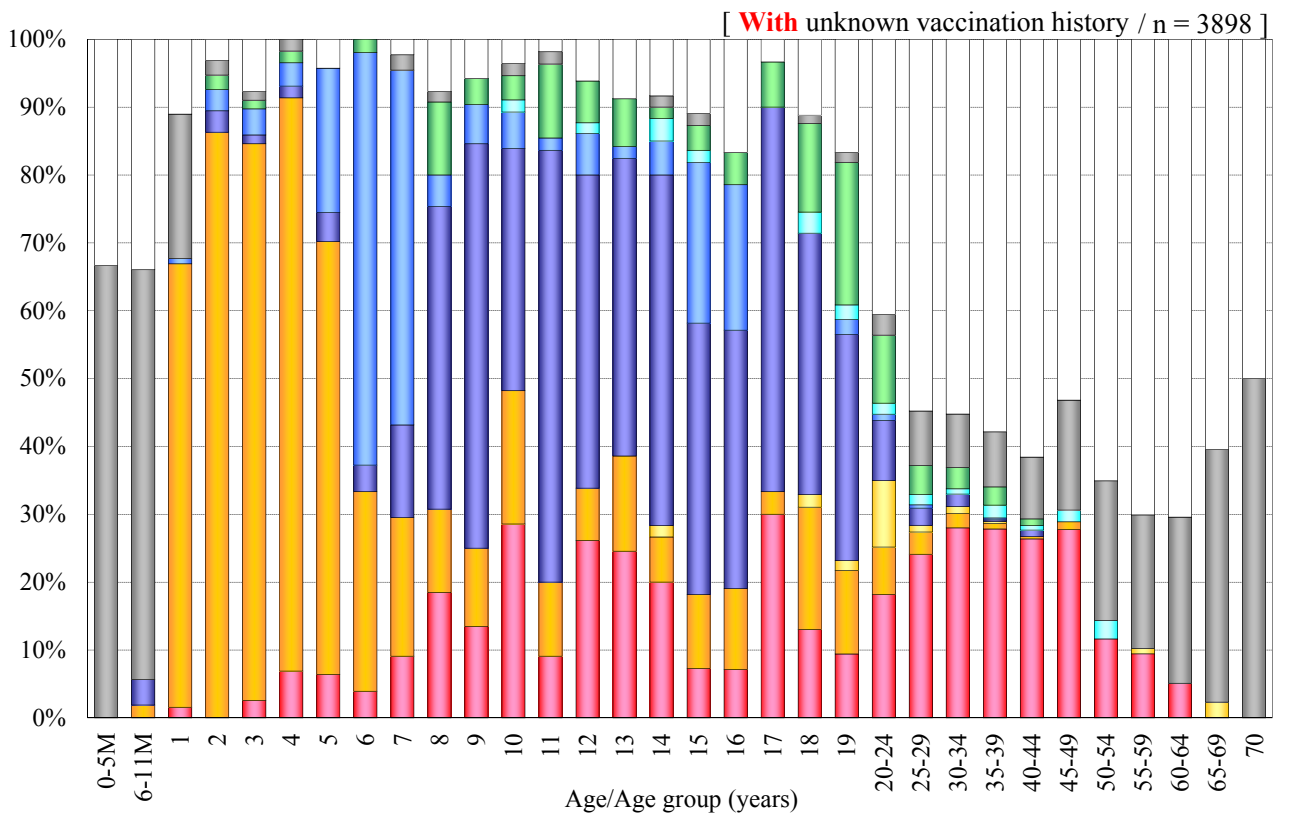
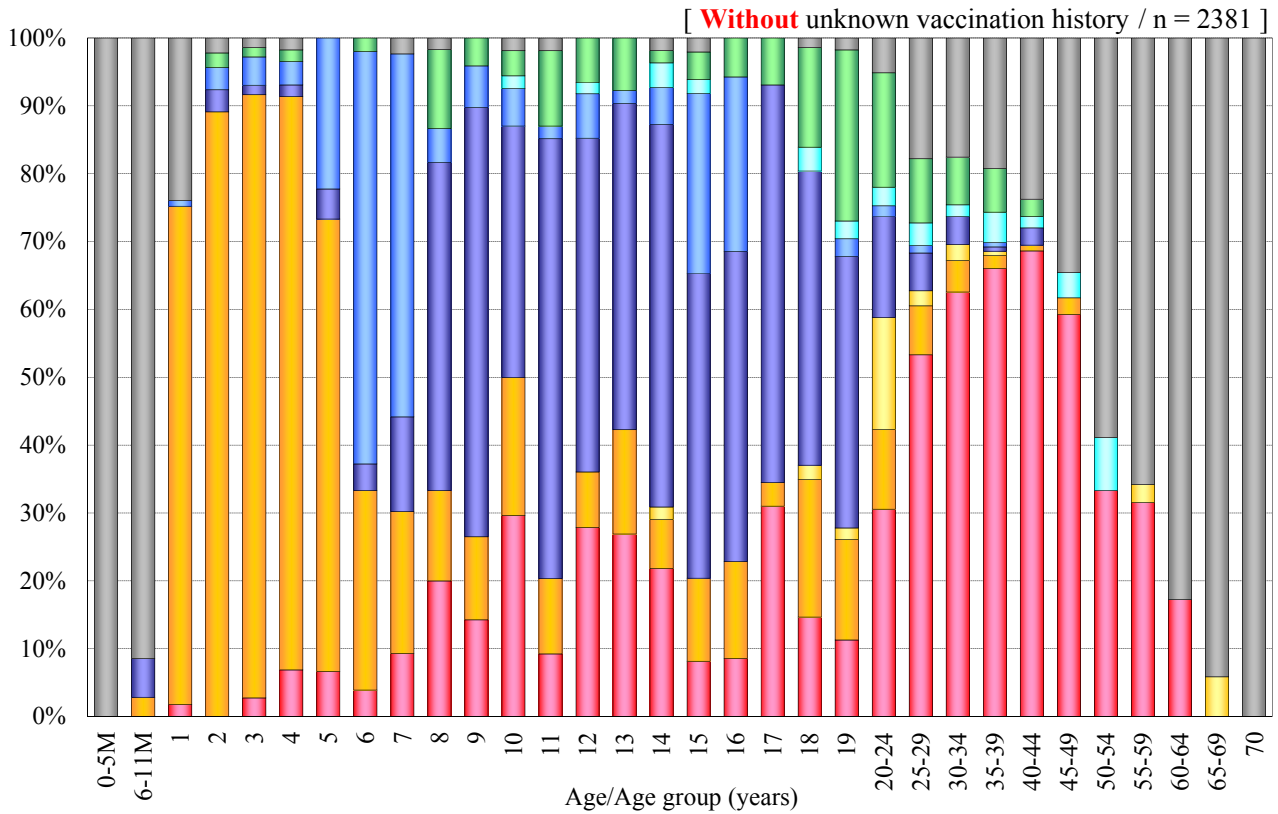


■ 1 dose	■ 1 dose	■ 1 dose	■ 2 doses	■ 2 doses	■ 2 doses	■ Unknown	■ Non-	□ Unknown
[R]	[MR]	[MMR]	[R+MR]	[MR+MR]	[R+R]	doses	vaccinee	vaccination history
[n=287]	[n=513]	[n=34]	[n=320]	[n=88]	[n=7]	[n=87]	[n=299]	[n=1510]

R : rubella vaccine / MR : measles-rubella combined vaccine
MMR : measles-mumps-rubella combined vaccine

Age distribution of rubella vaccination history in Japan, 2012 【Female】

- National Epidemiological Surveillance of Vaccine-Preventable Diseases, 2012 -



■ 1 dose	■ 1 dose	■ 1 dose	■ 2 doses	■ 2 doses	■ 2 doses	■ Unknown	■ Non-	□ Unknown
[R]	[MR]	[MMR]	[R+MR]	[MR+MR]	[R+R]	doses	vaccinee	vaccination history
[n=697]	[n=496]	[n=59]	[n=440]	[n=123]	[n=45]	[n=172]	[n=349]	[n=1517]

R : rubella vaccine / MR : measles-rubella combined vaccine
MMR : measles-mumps-rubella combined vaccine