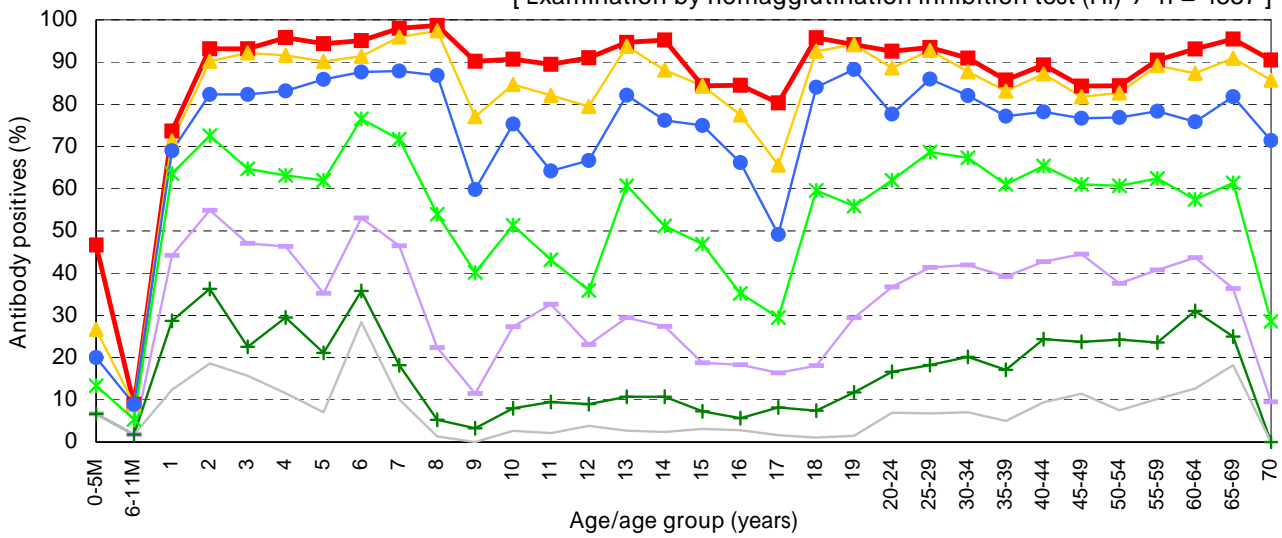


# Age distribution of rubella HI antibody positives in Japan, 2009

- National Epidemiological Surveillance of Vaccine-Preventable Diseases, 2009 -

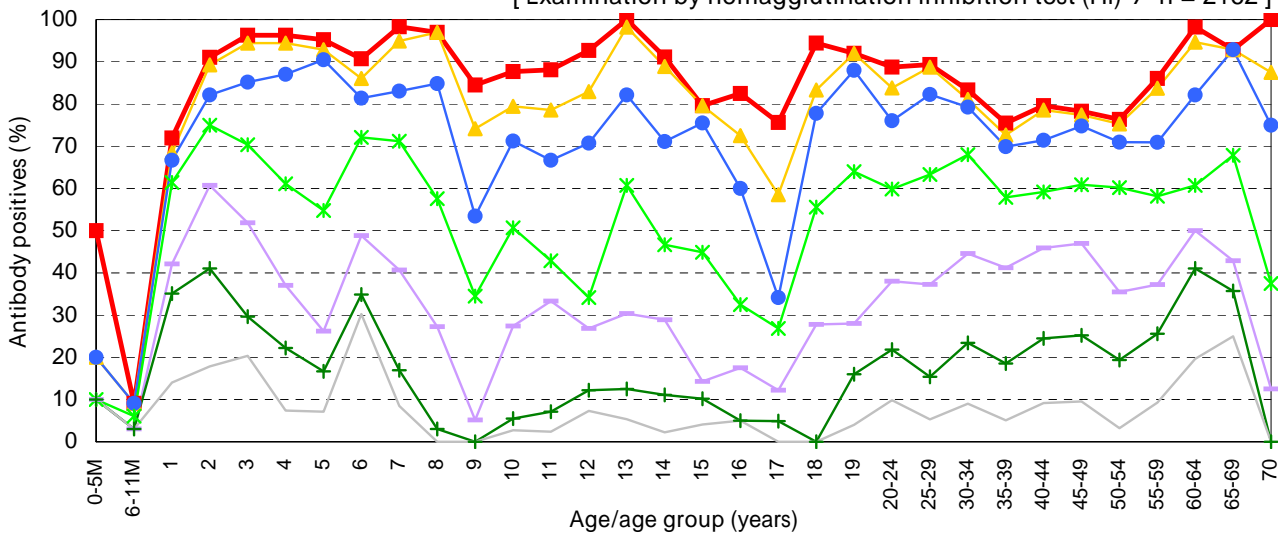
## Male & Female

[ Examination by hemagglutination inhibition test (HI) / n = 4557 ]



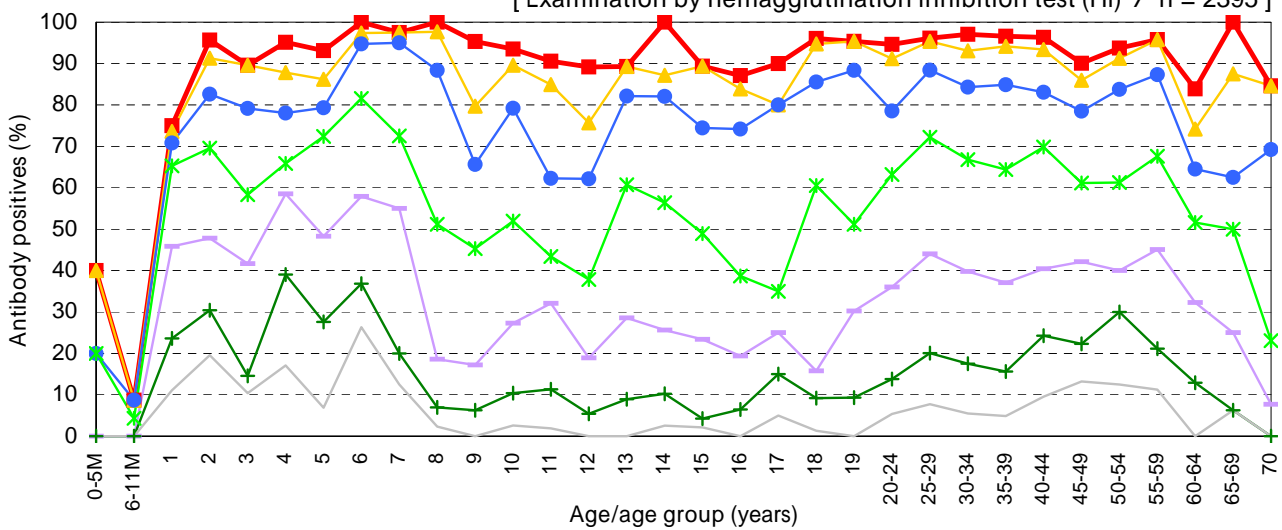
## Male

[ Examination by hemagglutination inhibition test (HI) / n = 2162 ]



## Female

[ Examination by hemagglutination inhibition test (HI) / n = 2395 ]



HI titer    ■ 1:8    ▲ 1:16    ● 1:32    \* 1:64    + 1:128    × 1:256    — 1:512