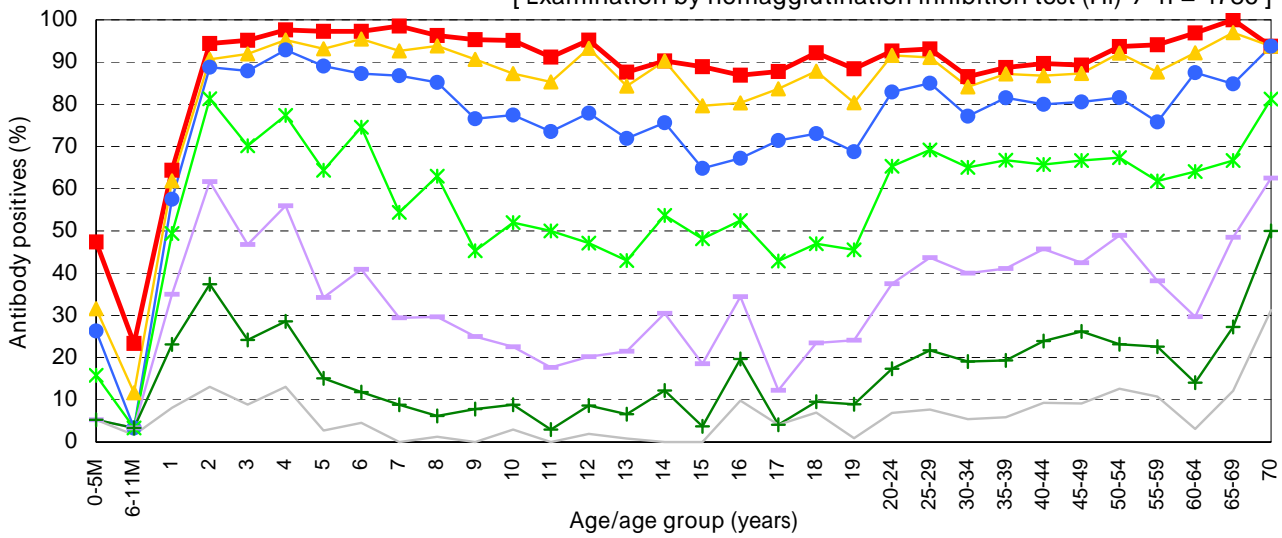


Age distribution of rubella HI antibody positives in Japan, 2008

- National Epidemiological Surveillance of Vaccine-Preventable Diseases, 2008 -

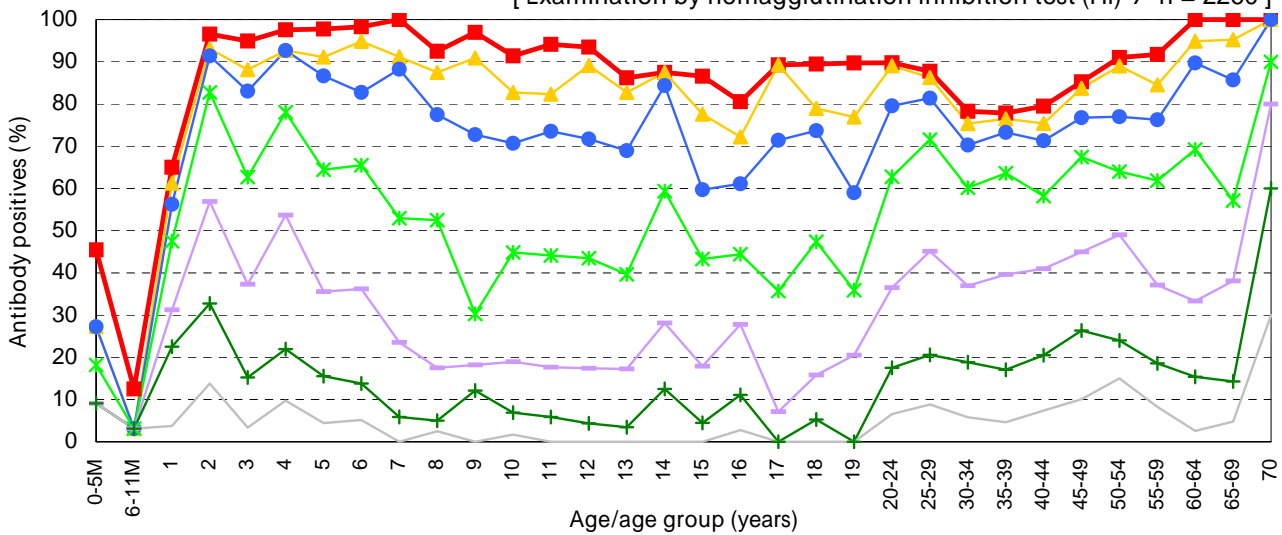
Male & Female

[Examination by hemagglutination inhibition test (HI) / n = 4786]



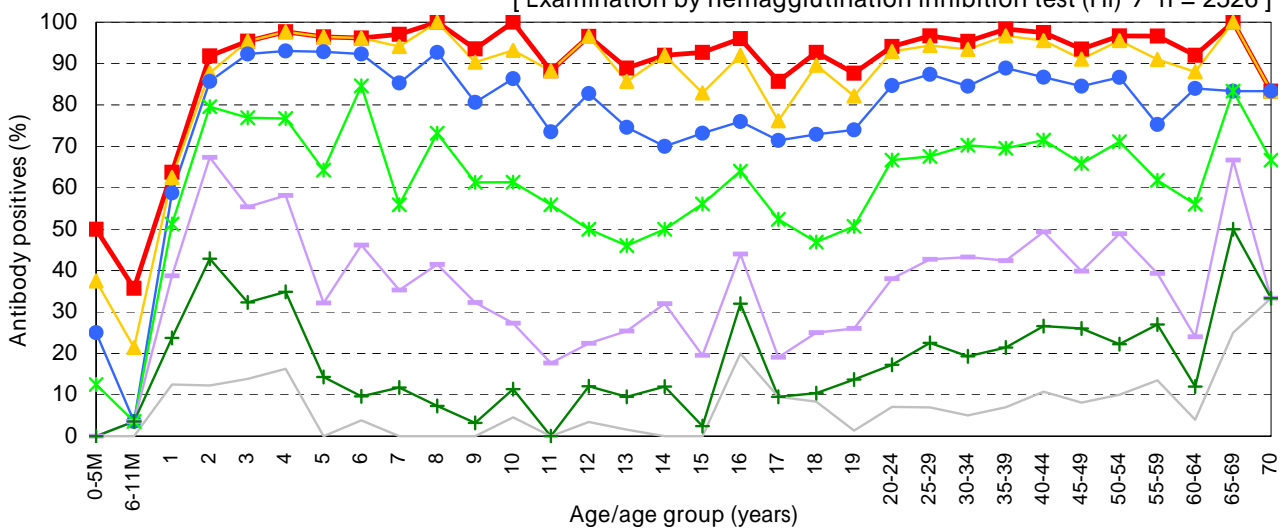
Male

[Examination by hemagglutination inhibition test (HI) / n = 2260]



Female

[Examination by hemagglutination inhibition test (HI) / n = 2526]



HI titer ■ 1:8 ▲ 1:16 ● 1:32 * 1:64 + 1:128 × 1:256 — 1:512