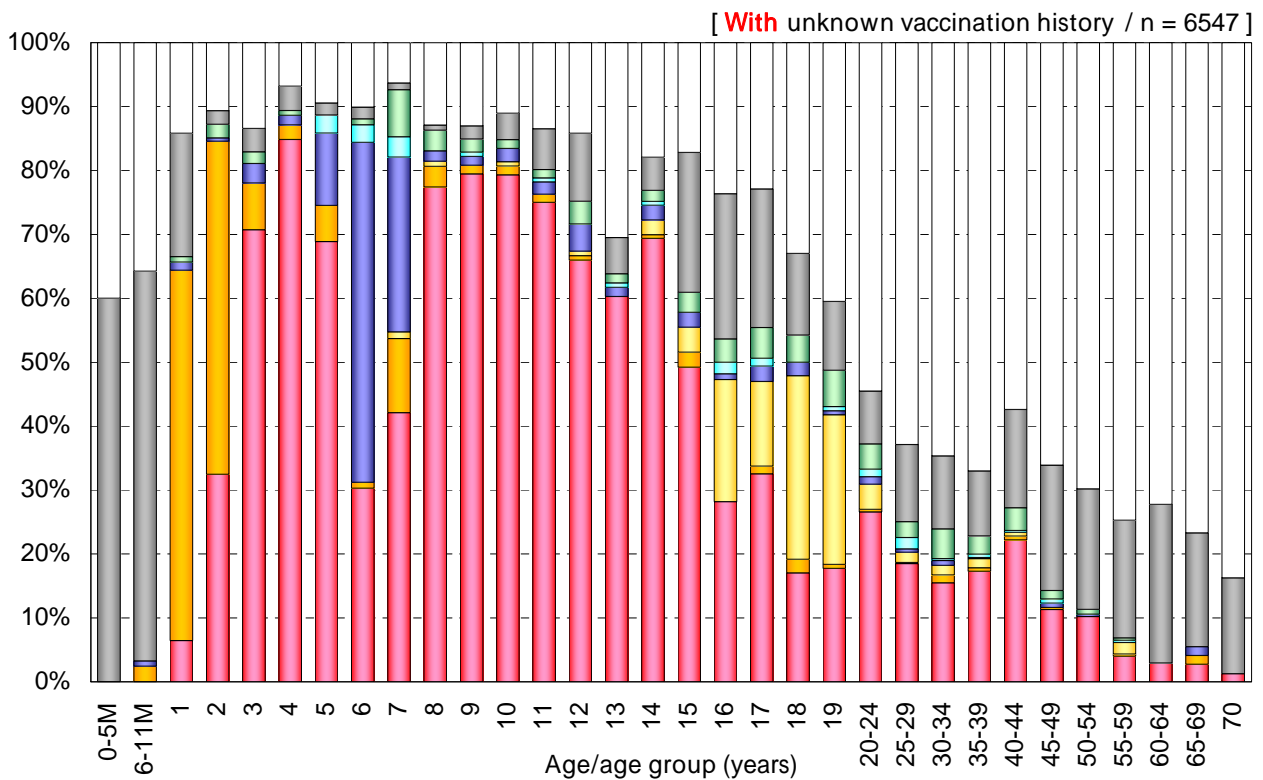
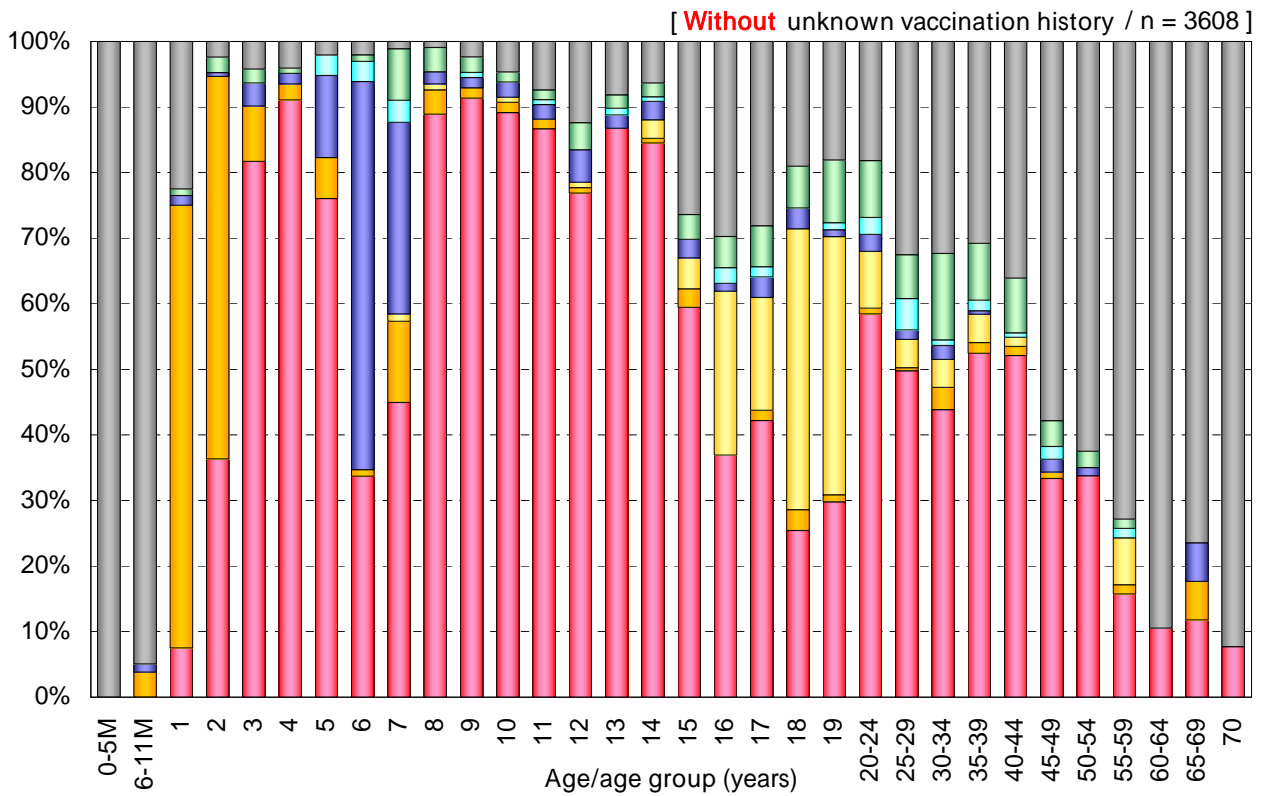


Age distribution of rubella vaccination history in Japan, 2007

- National Epidemiological Surveillance of Vaccine-Preventable Diseases, 2007 -



Vaccination history

1 dose [R]	1 dose [MR]	1 dose [MMR]	2 doses [R+MR]	2 doses [MR+MR]	2 doses [R+R]	Unknown doses	Non-vaccinee	Unknown vaccination history
[n=1950]	[n=307]	[n=163]	[n=158]	[n=0]	[n=42]	[n=164]	[n=824]	[n=2939]

R : rubella vaccine / MR : measles-rubella combination vaccine / MMR : measles-mumps-rubella combination vaccine

