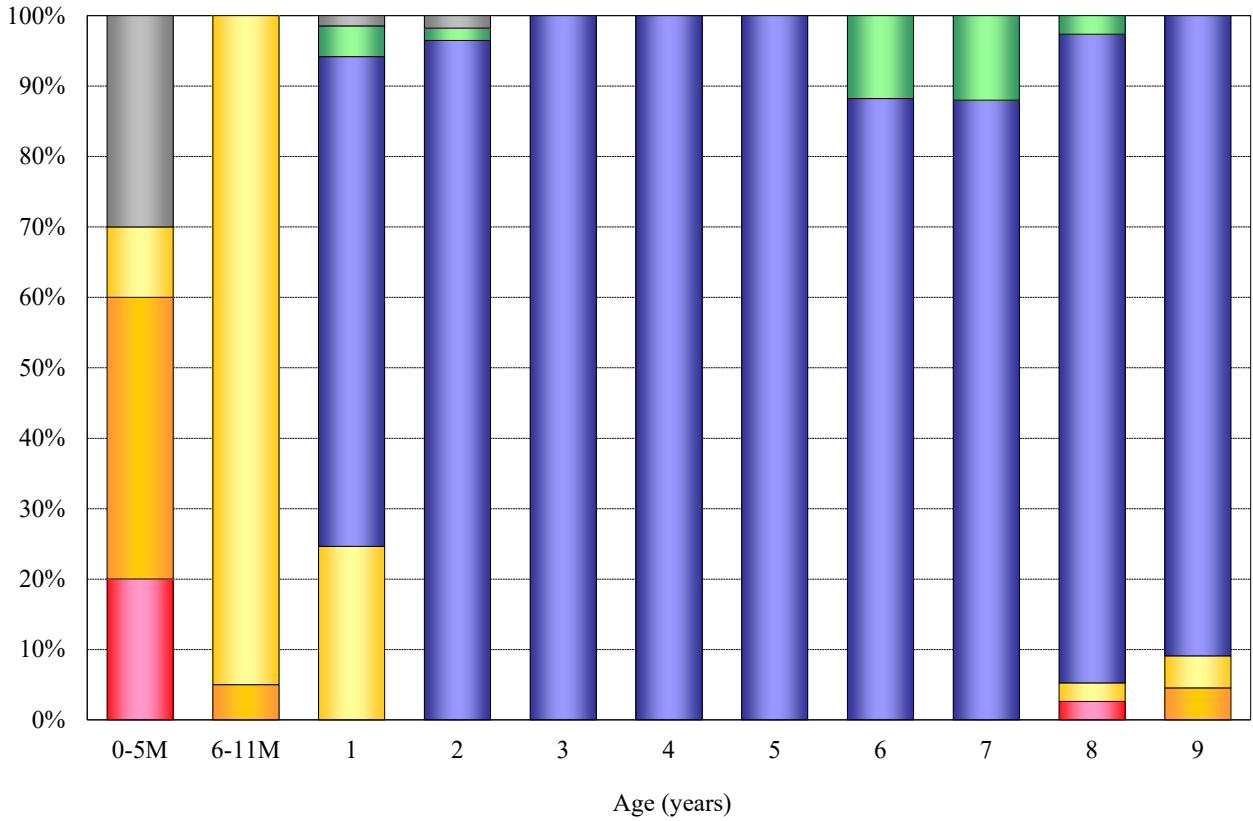


Age distribution of PCV vaccination history in Japan, 2021

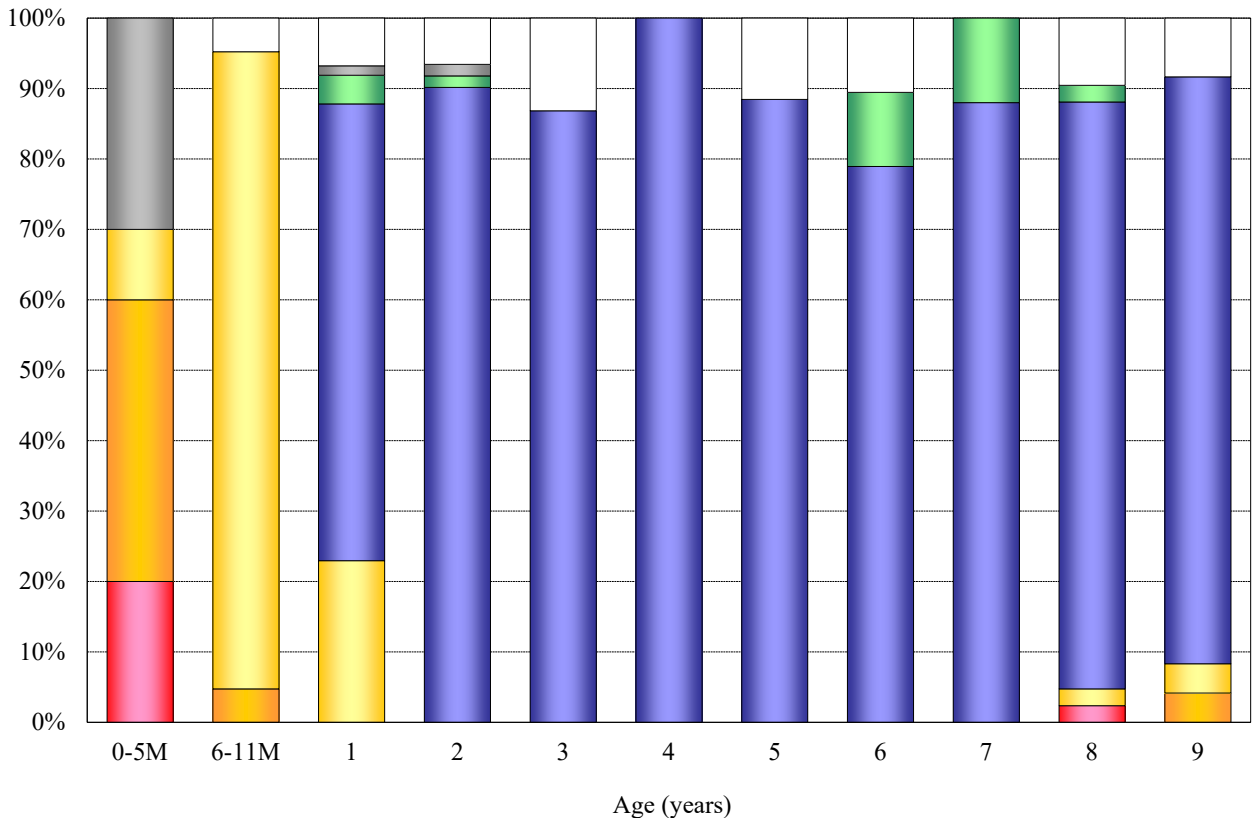
— National Epidemiological Surveillance of Vaccine-Preventable Diseases, 2021 —

(As of April 2022)

[**Without** unknown vaccination history / n = 330]



[**With** unknown vaccination history / n = 356]



■ 1 dose [n=3]
 ■ 2 doses [n=6]
 ■ 3 doses [n=39]
 ■ 4 doses [n=267]
 ■ Unknown doses [n=10]
 ■ Non-vaccinee [n=5]
 □ Unknown vaccination history [n=26]