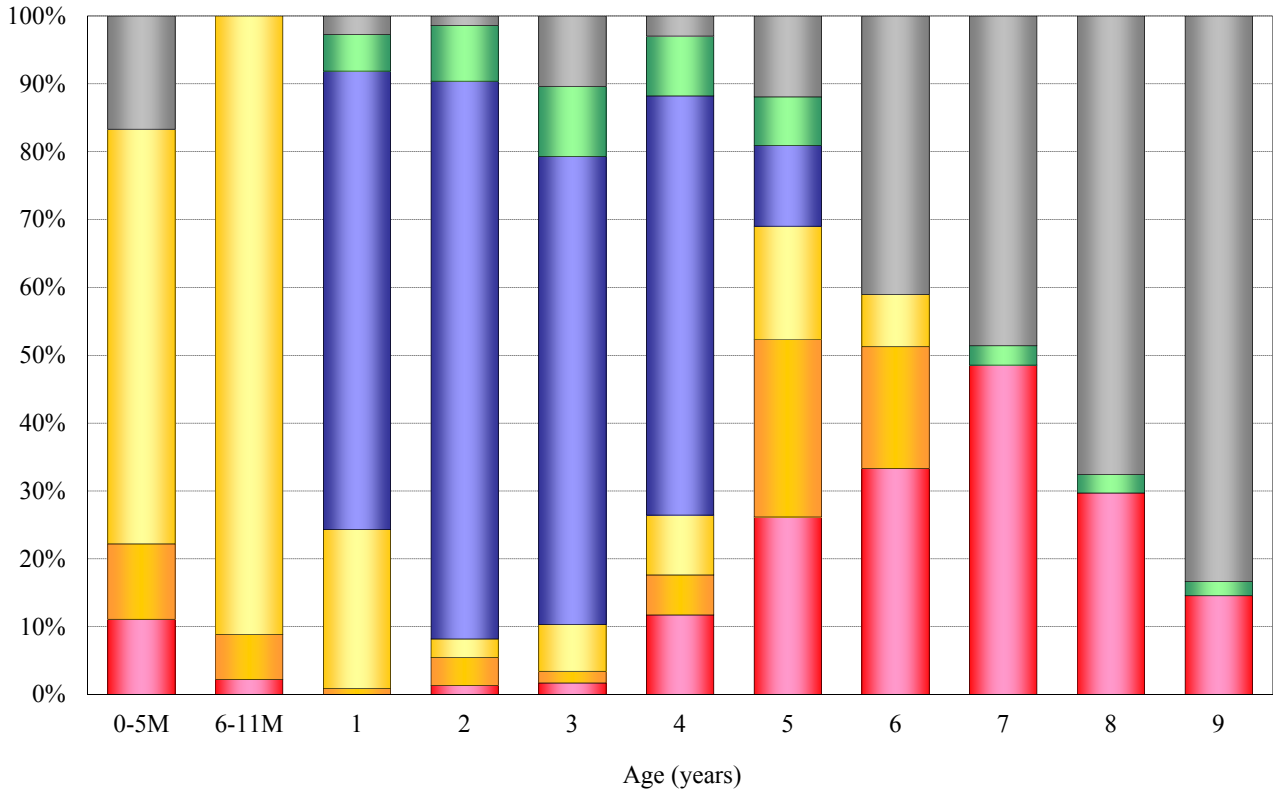


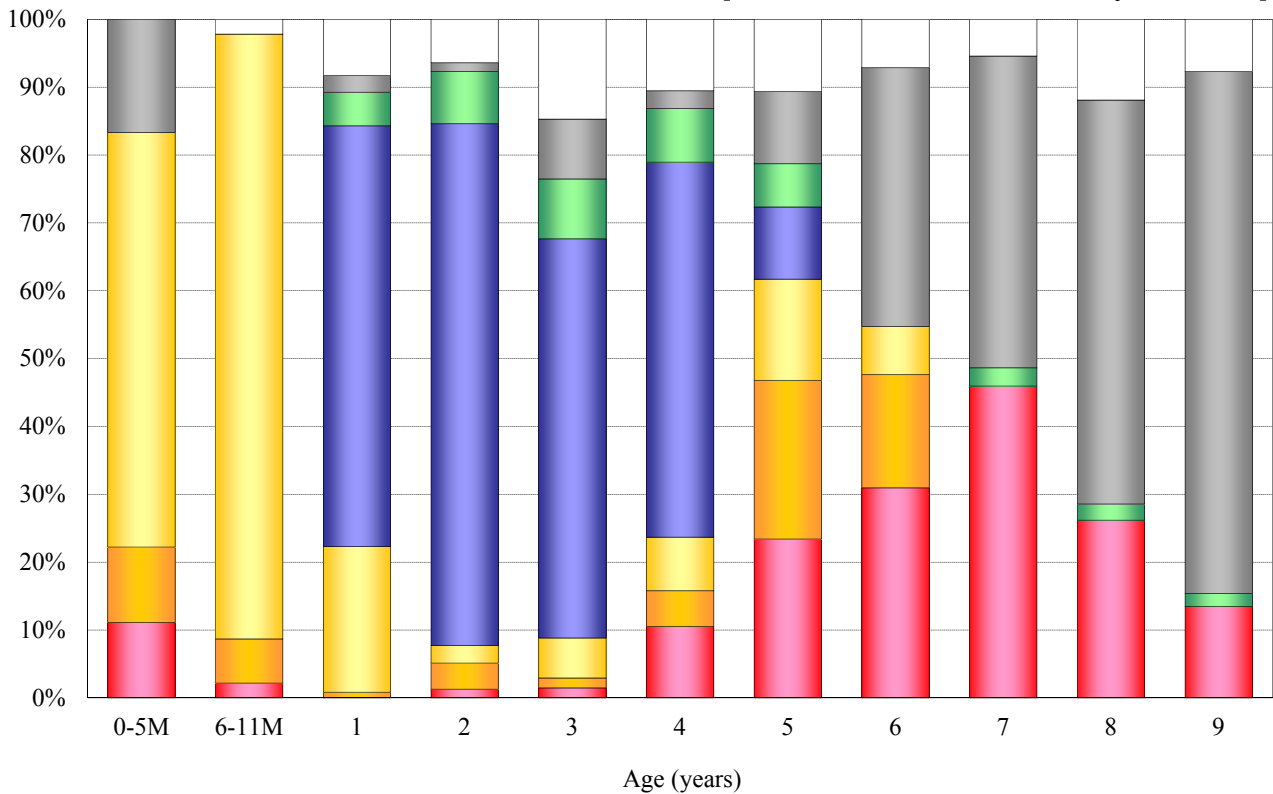
Age distribution of PCV vaccination history in Japan, 2015

- National Epidemiological Surveillance of Vaccine-Preventable Diseases, 2015 -

[Without unknown vaccination history / n = 540]



[With unknown vaccination history / n = 589]



■ 1 dose [n=68]
 ■ 2 doses [n=30]
 ■ 3 doses [n=97]
 ■ 4 doses [n=201]
 ■ Unknown doses [n=27]
 ■ Non-vaccinee [n=117]
 □ Unknown vaccination history [n=49]