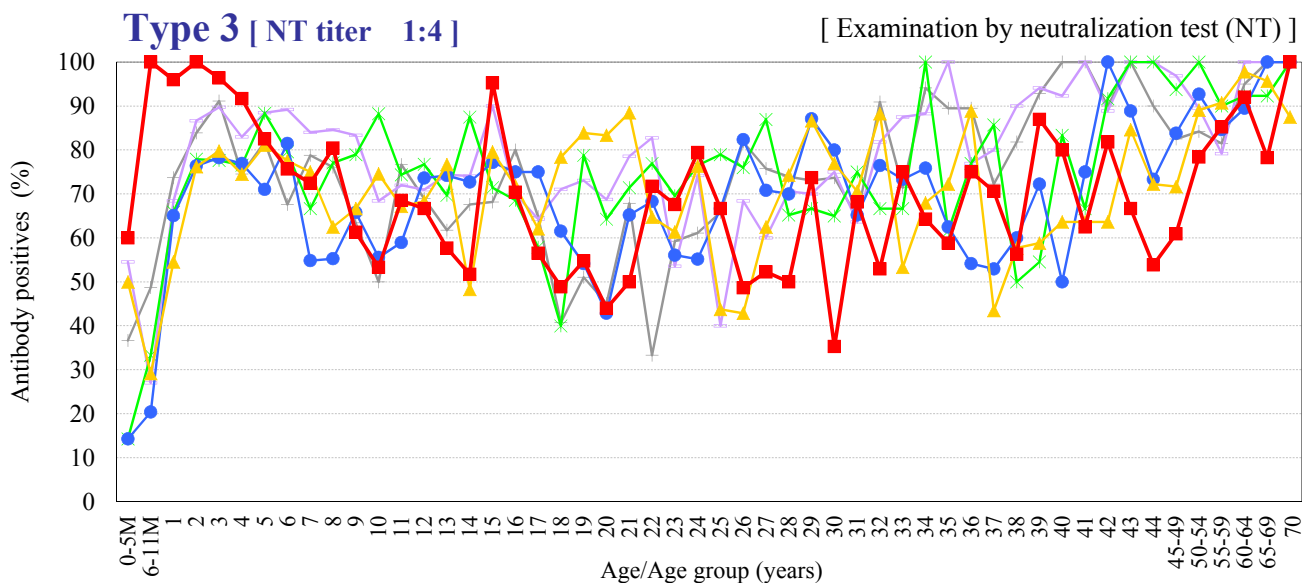
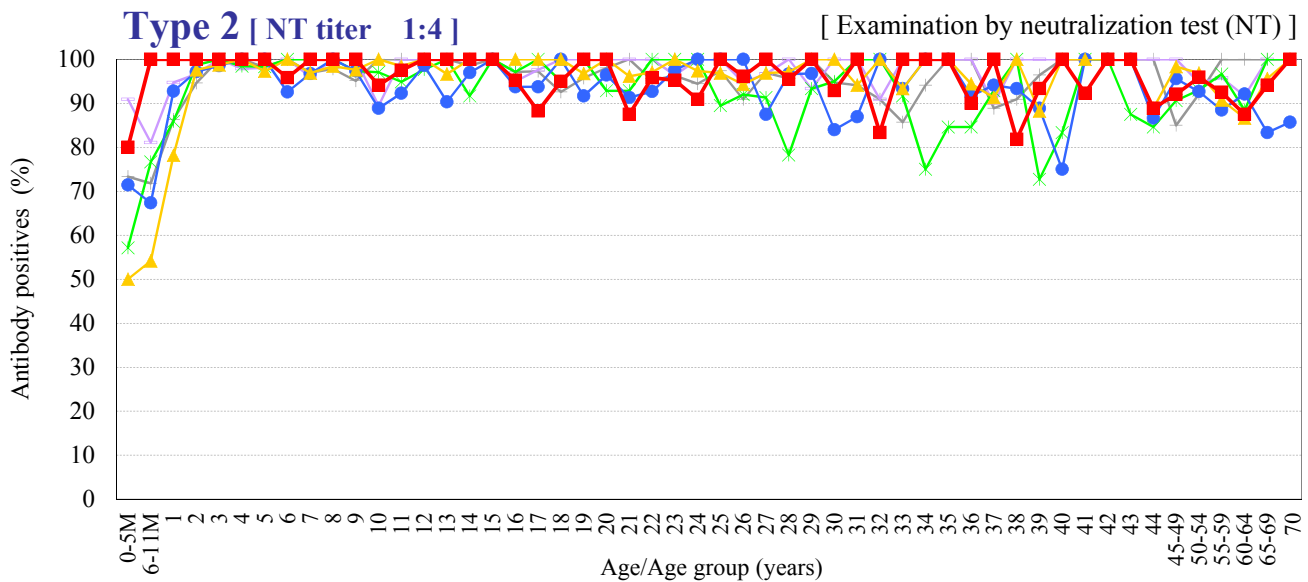
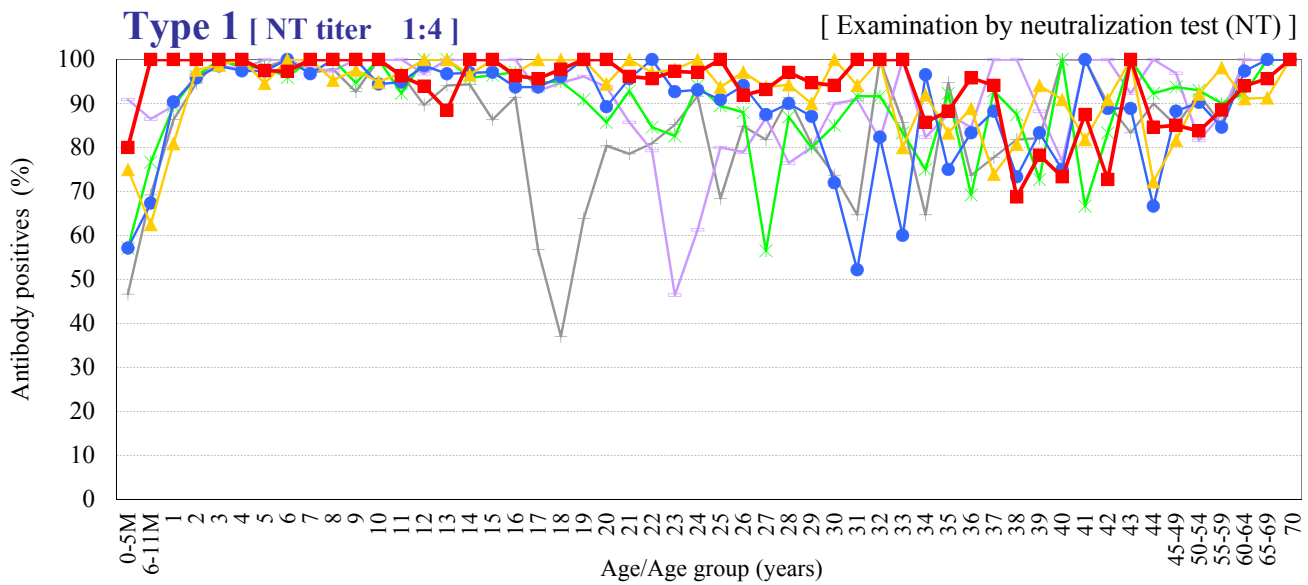


Age distribution of polio NT antibody positives in Japan, 1994 ~ 2016

- National Epidemiological Surveillance of Vaccine-Preventable Diseases, 2016 -



Year — 1994 (n=1,710) — 1999 (n=1,314) — 2003 (n=1,445) — 2007 (n=1,607) — 2012 (n=1,827) — 2016 (n=1,713)