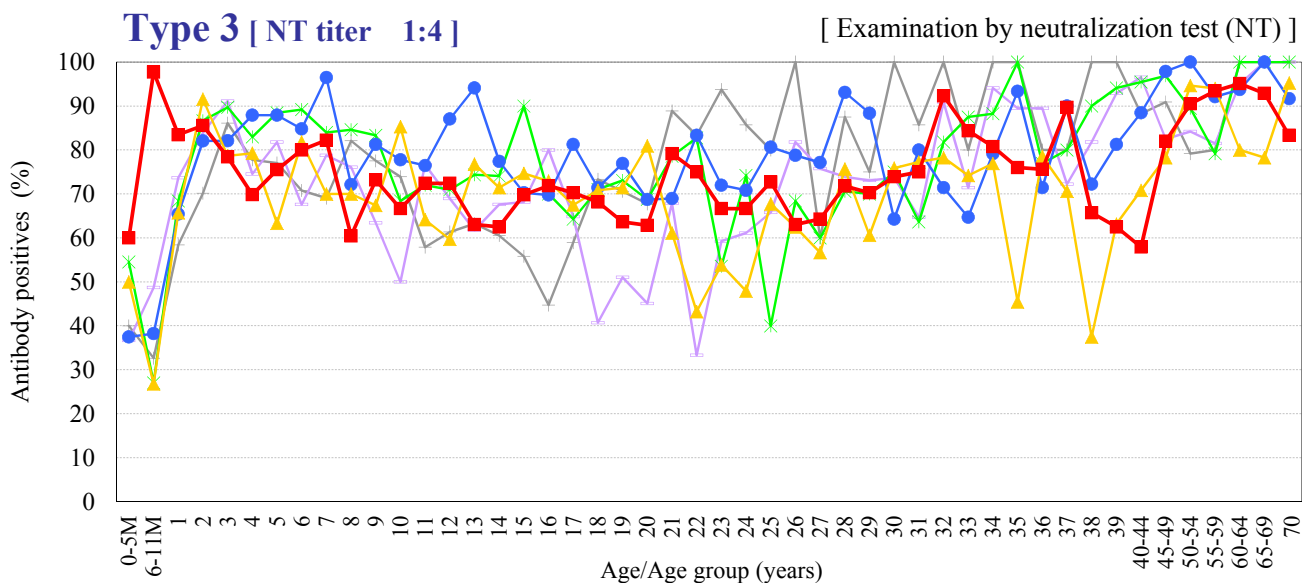
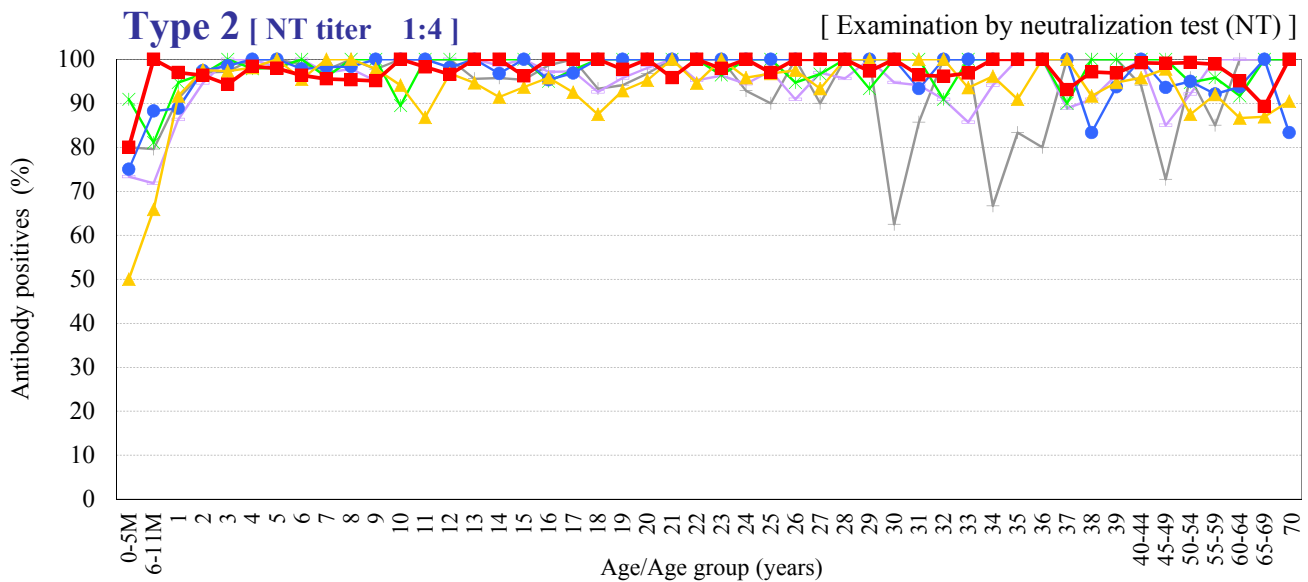
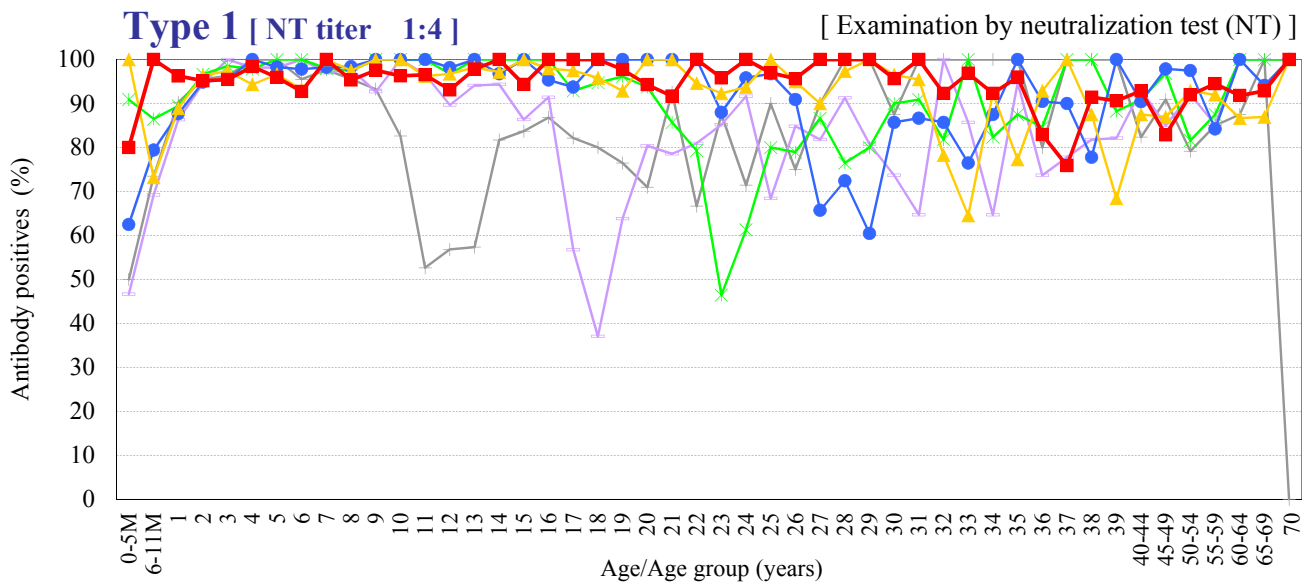


# Age distribution of polio NT antibody positives in Japan, 1988 ~ 2013

- National Epidemiological Surveillance of Vaccine-Preventable Diseases, 2013 -



Year — 1988 (n=1469) — 1994 (n=1710) — 1999 (n=1314) — 2004 (n=1636) — 2009 (n=1856) — 2013 (n=2309)