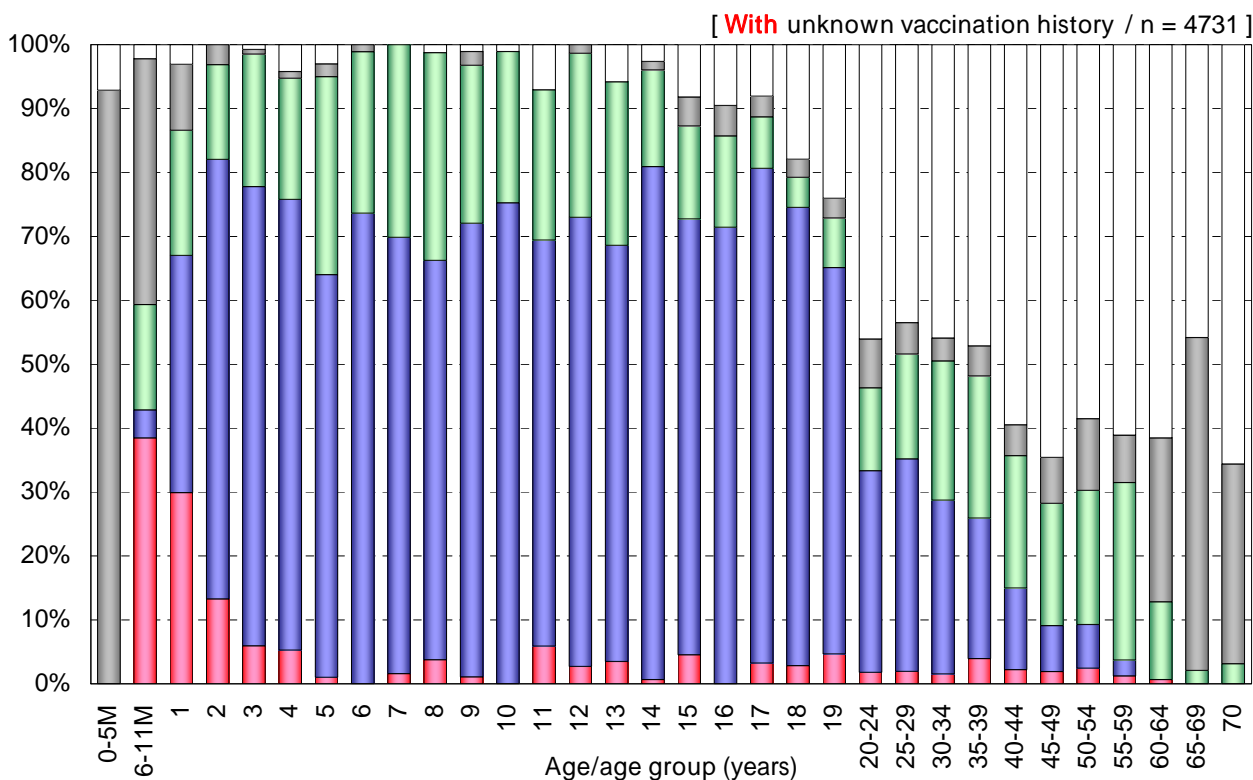
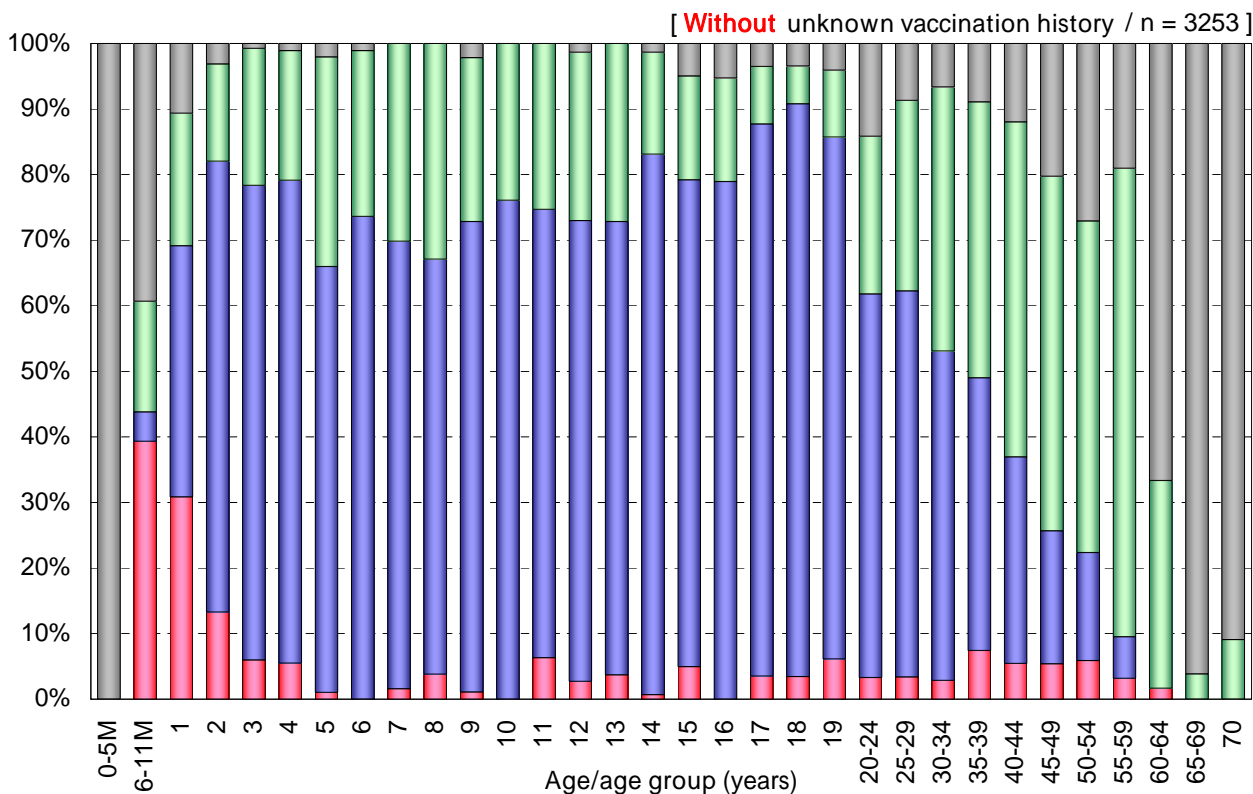


Age distribution of polio vaccination history in Japan, 2011

- National Epidemiological Surveillance of Vaccine-Preventable Diseases, 2011 -



Vaccination history

- 1 dose [n=210]
- 2 doses [n=1825]
- Unknown doses [n=885]
- Non-vaccinee [n=333]
- Unknown vaccination history [n=1478]