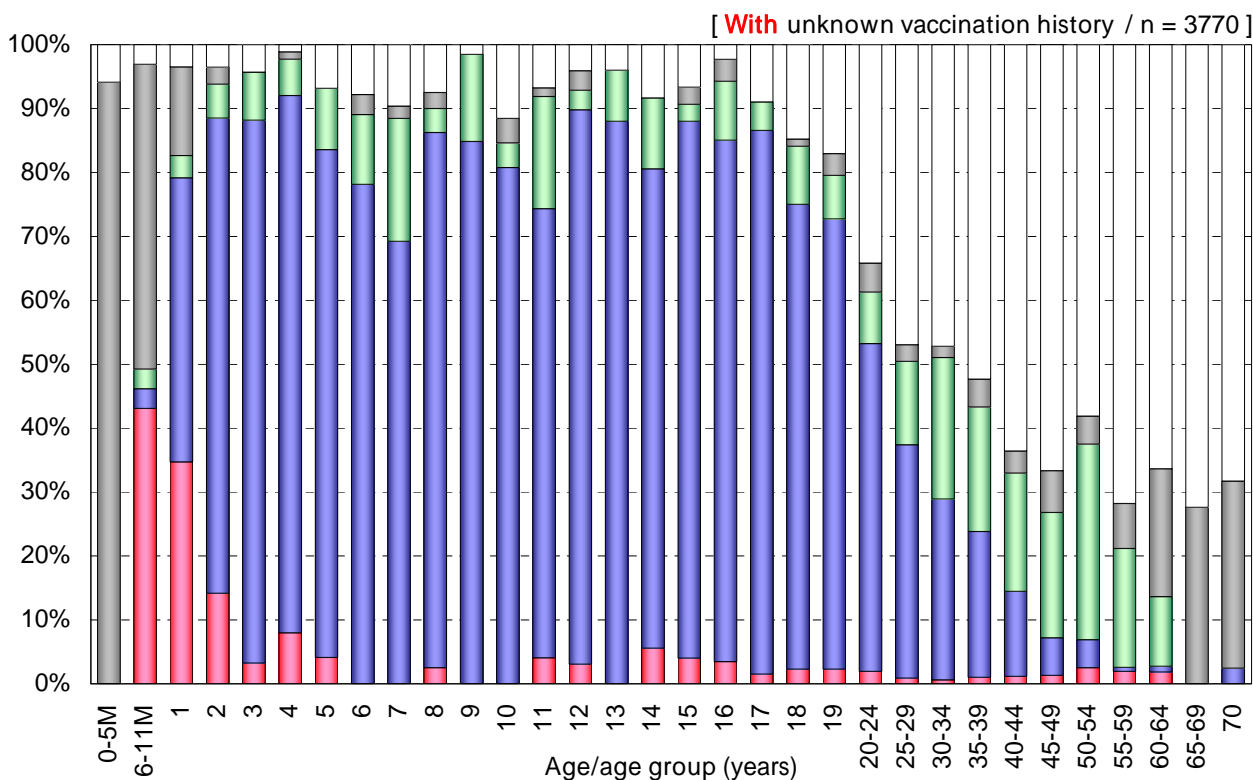
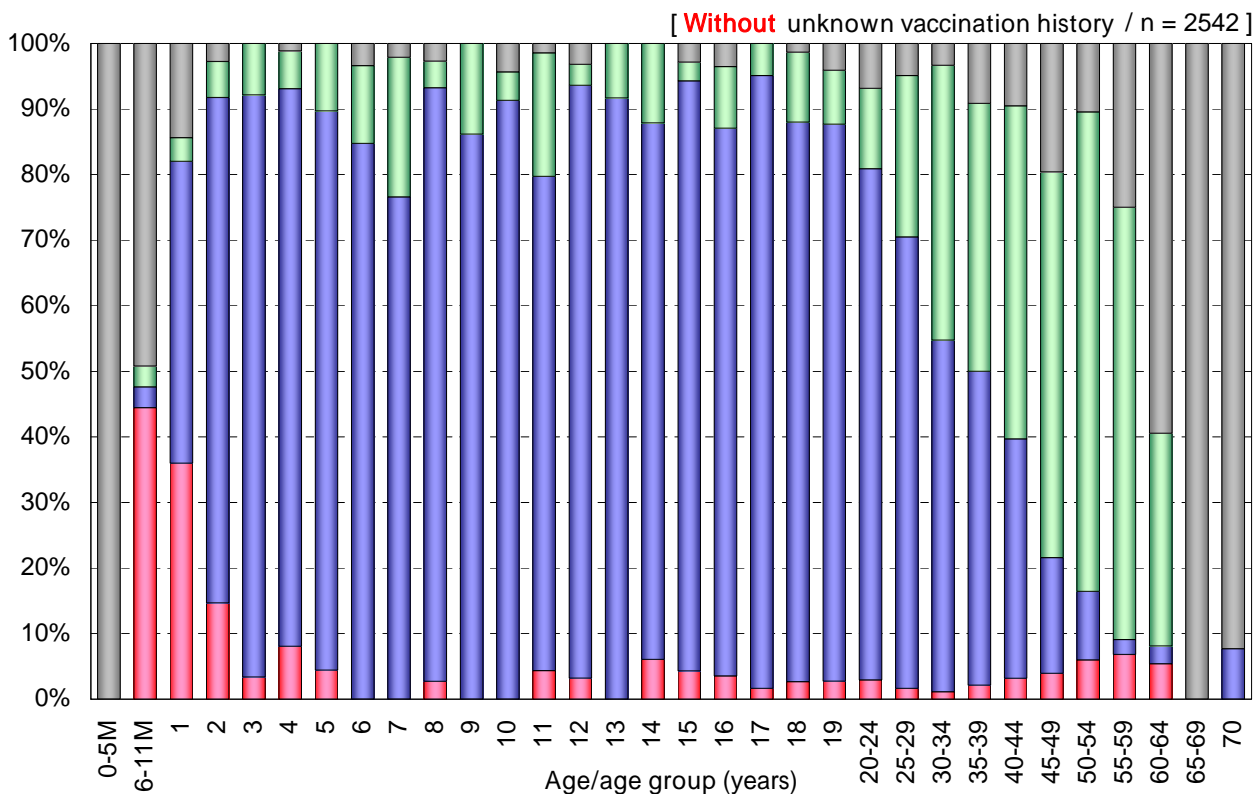


Age distribution of polio vaccination history in Japan, 2010

- National Epidemiological Surveillance of Vaccine-Preventable Diseases, 2010 -



Vaccination history

- 1 dose [n=157]
- 2 doses [n=1699]
- Unknown doses [n=477]
- Non-vaccinee [n=209]
- Unknown vaccination history [n=1228]