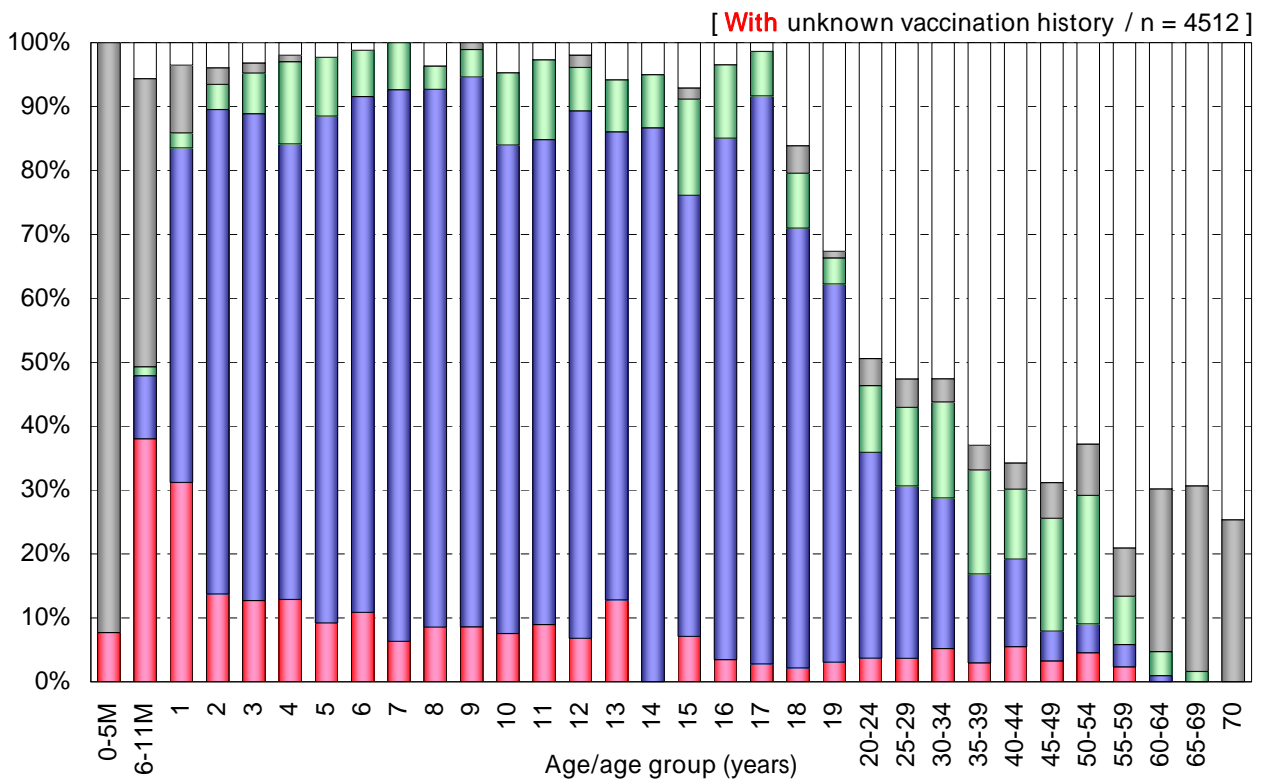
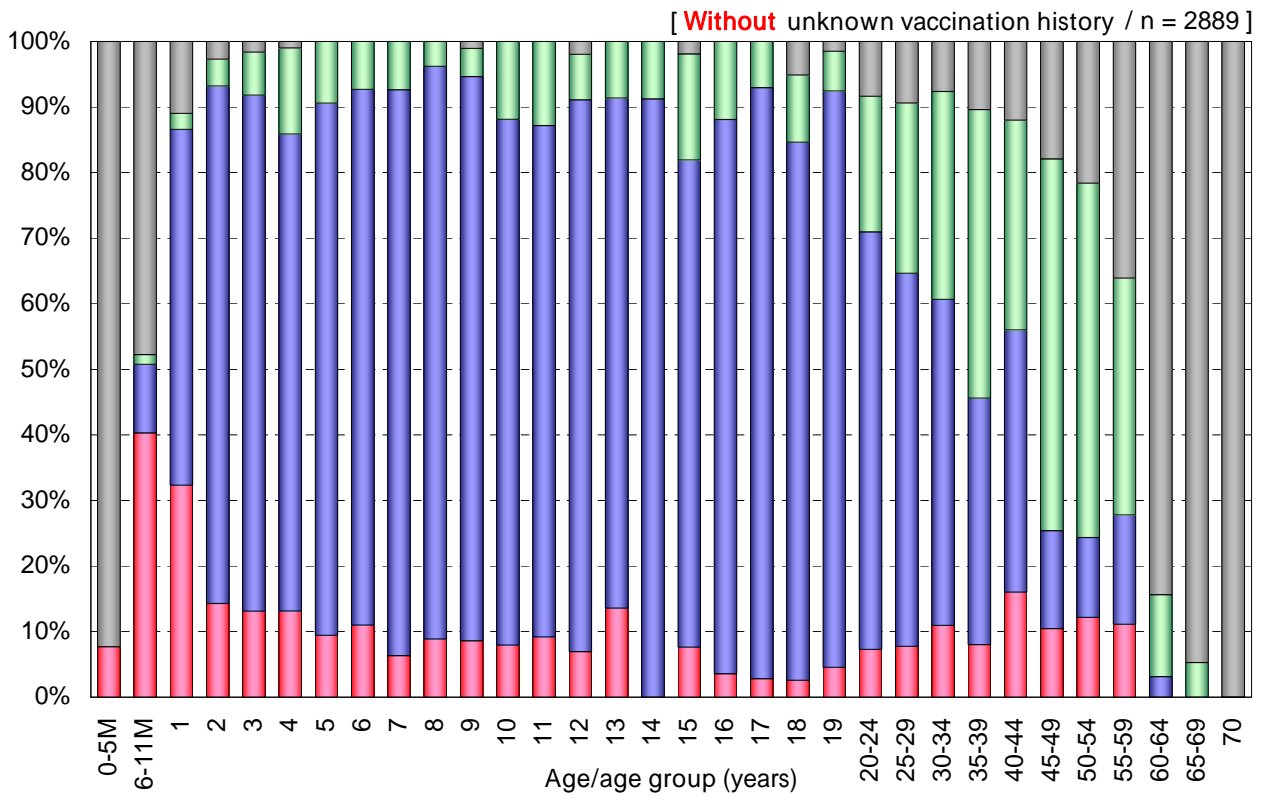


# Age distribution of polio vaccination history in Japan, 2009

- National Epidemiological Surveillance of Vaccine-Preventable Diseases, 2009 -



Vaccination history

- 1 dose [n=312]
- 2 doses [n=1859]
- Unknown doses [n=466]
- Non-vaccinee [n=252]
- Unknown vaccination history [n=1623]