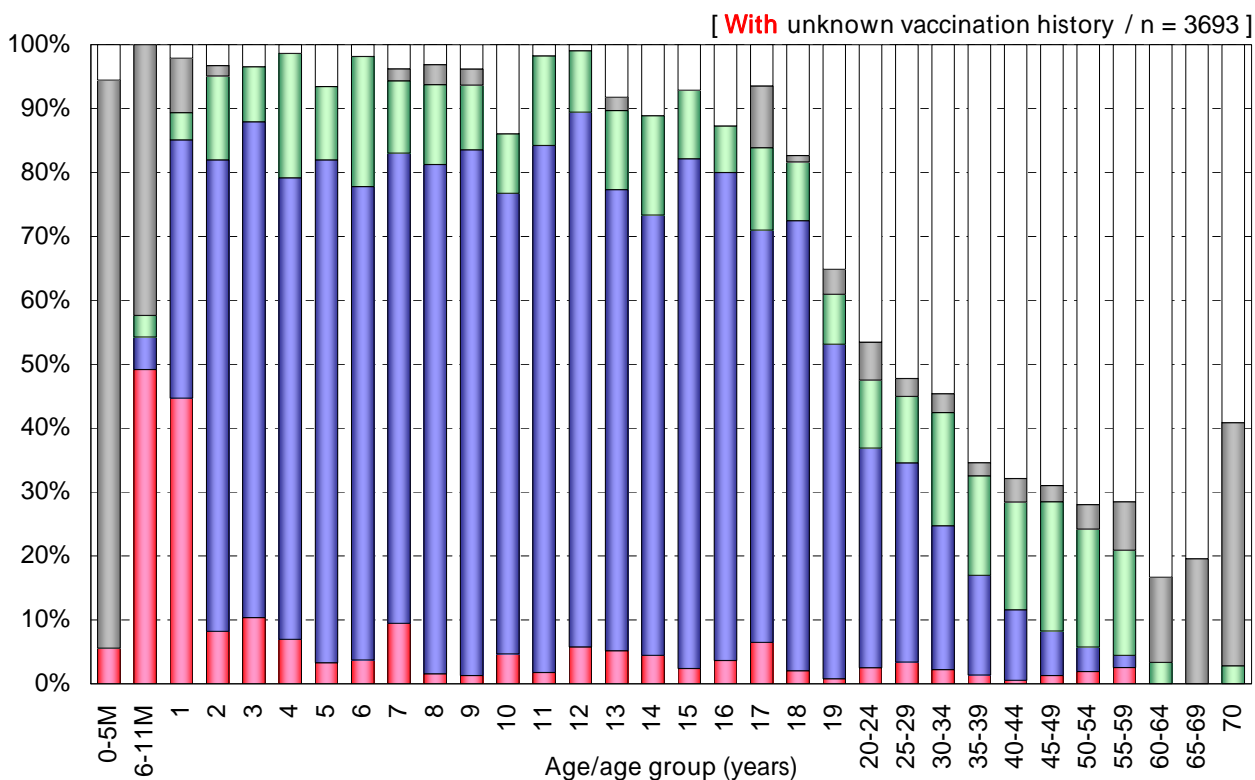
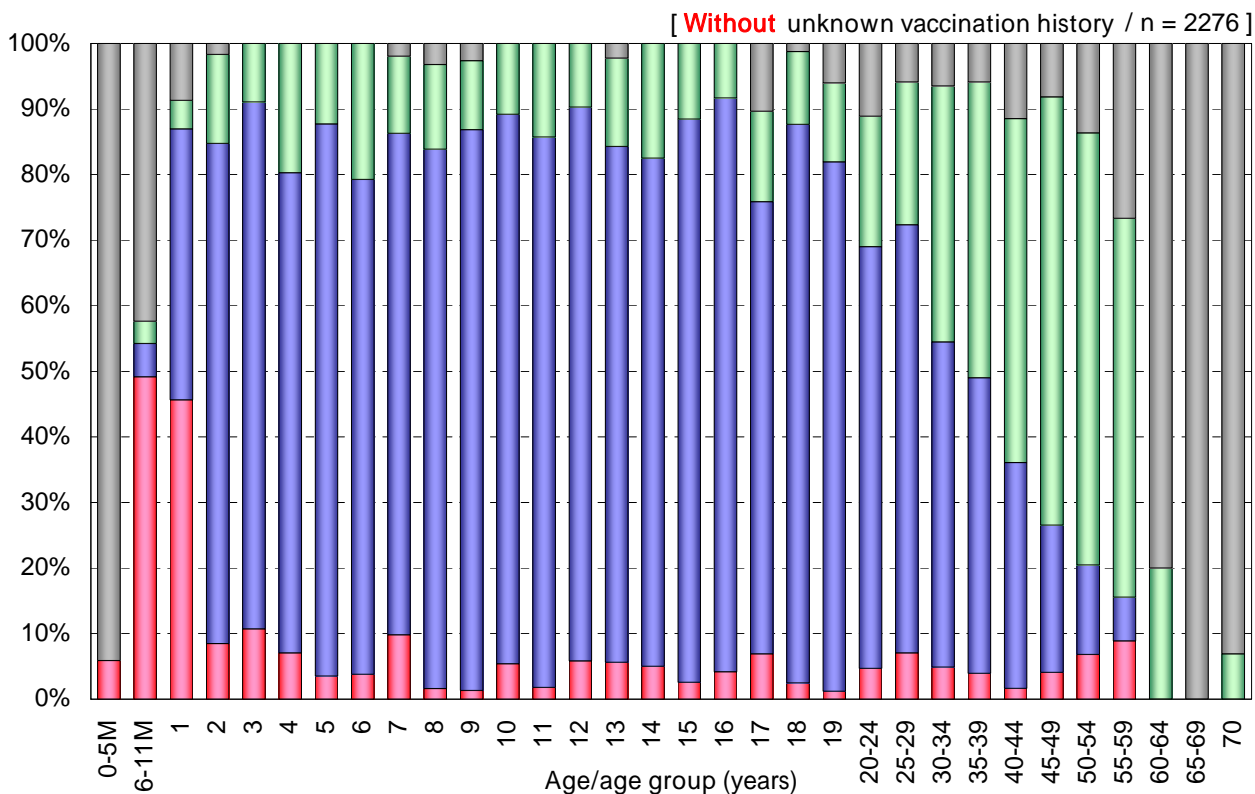


# Age distribution of polio vaccination history in Japan, 2008

- National Epidemiological Surveillance of Vaccine-Preventable Diseases, 2008 -



Vaccination history

- 1 dose [n=196]
- 2 doses [n=1435]
- Unknown doses [n=454]
- Non-vaccinee [n=191]
- Unknown vaccination history [n=1417]