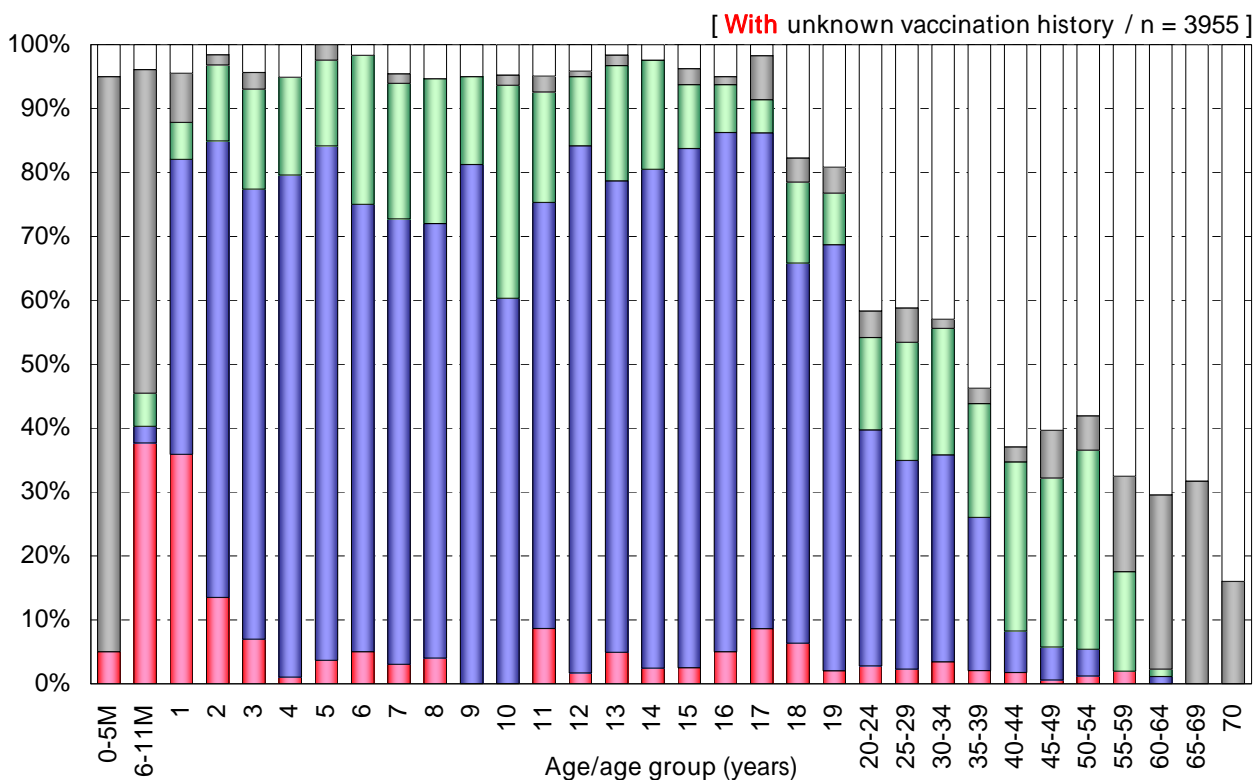
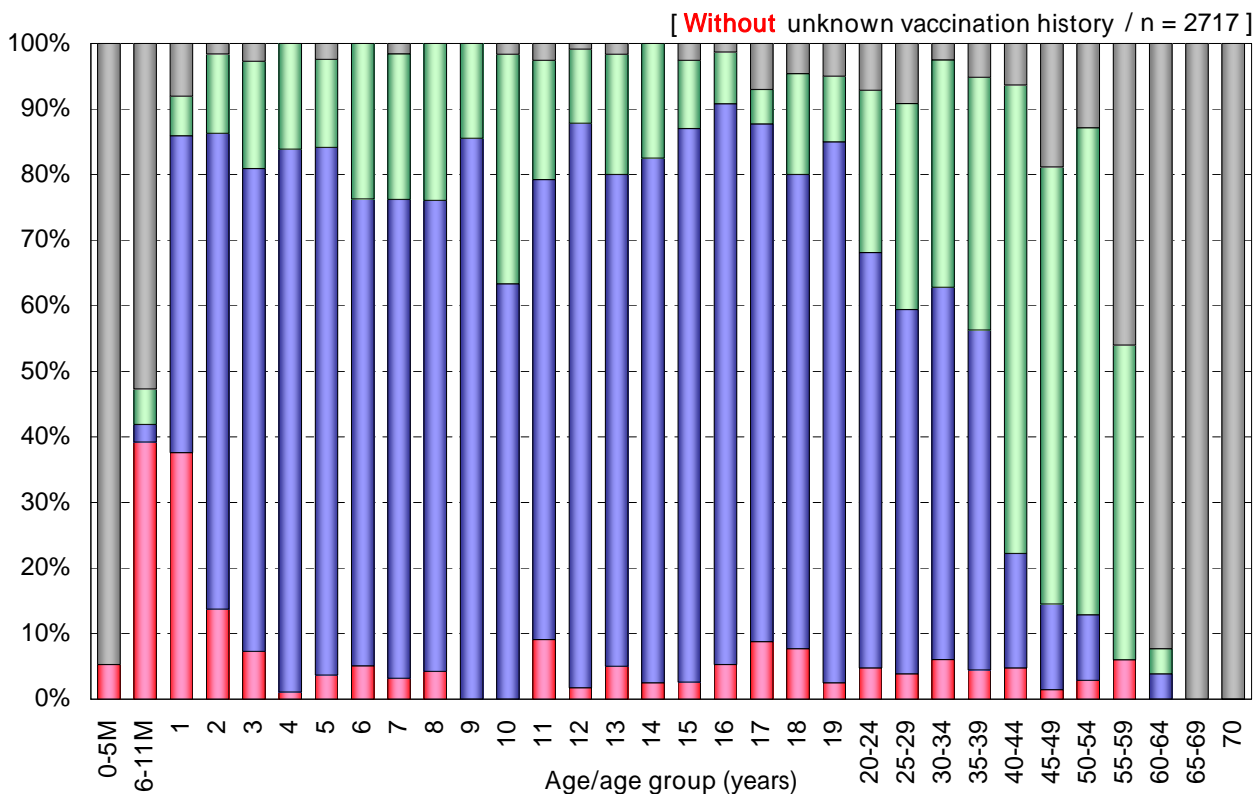


Age distribution of polio vaccination history in Japan, 2007

- National Epidemiological Surveillance of Vaccine-Preventable Diseases, 2007 -



Vaccination history

- 1 dose [n=200]
- 2 doses [n=1639]
- Unknown doses [n=642]
- Non-vaccinee [n=236]
- Unknown vaccination history [n=1238]