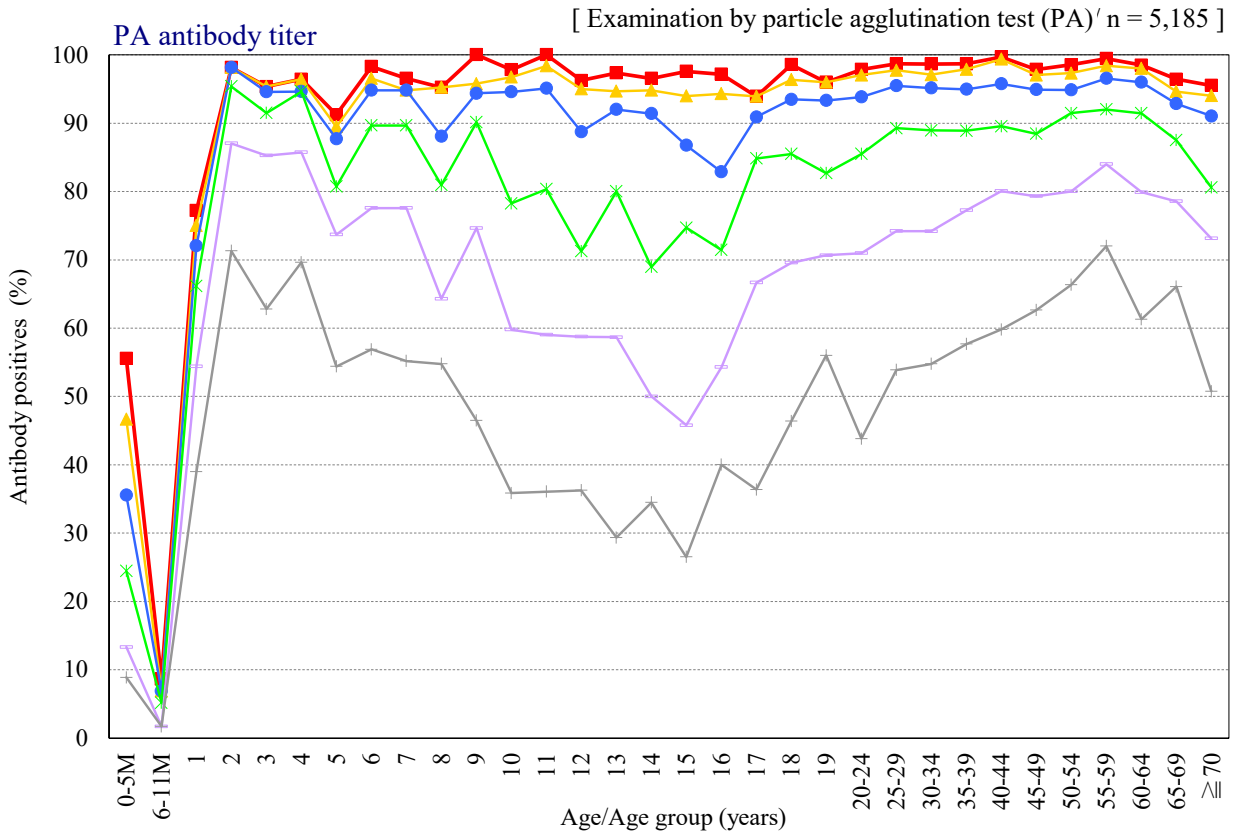


Age distribution of measles PA antibody positives in Japan, 2022

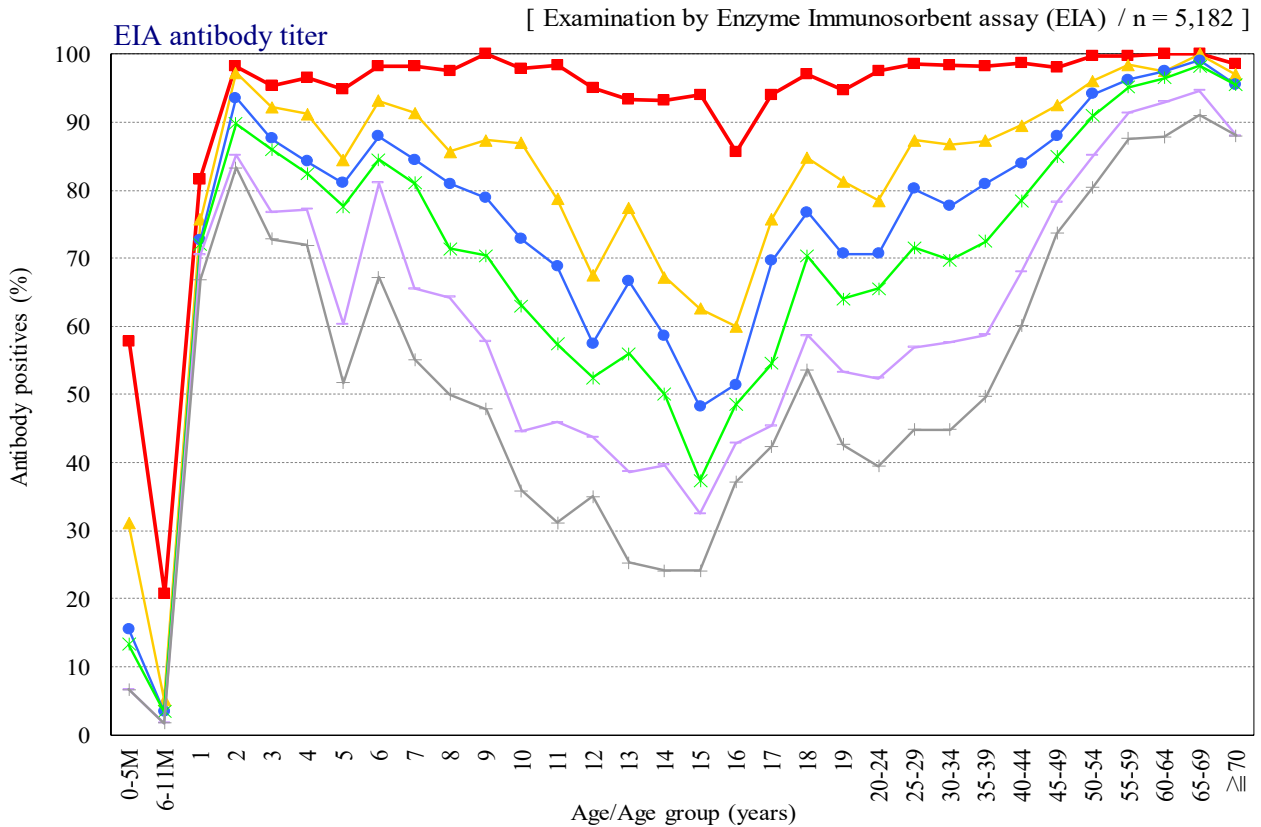
— National Epidemiological Surveillance of Vaccine-Preventable Diseases, 2022 —

(As of April 2023)



PA titer — ■ $\geq 1:16$ ▲ $\geq 1:32$ ● $\geq 1:64$ * $\geq 1:128$ □ $\geq 1:256$ + $\geq 1:512$

NESVPD2022



EIA titer — ■ ≥ 2 ▲ ≥ 4 ● ≥ 5 * ≥ 6 □ ≥ 8 + ≥ 10

NESVPD2022