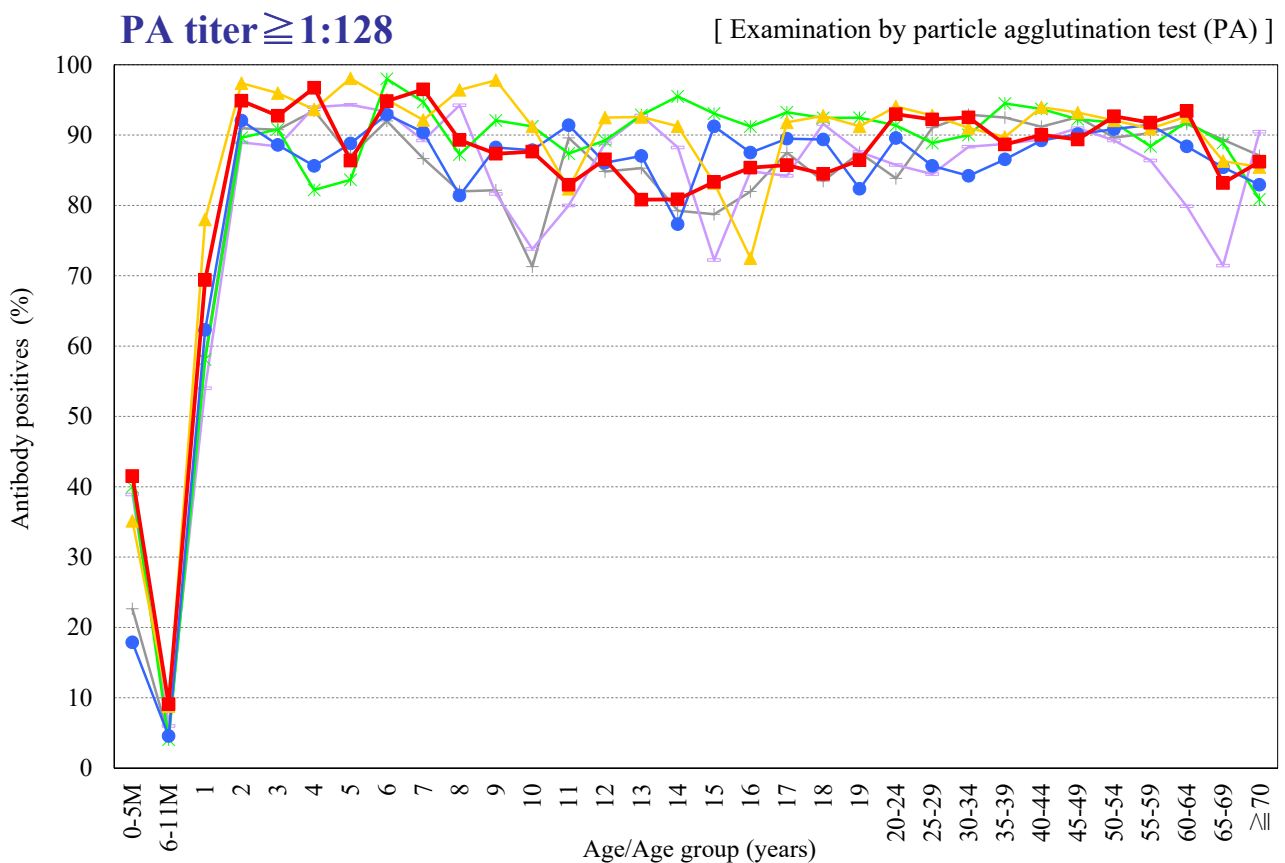
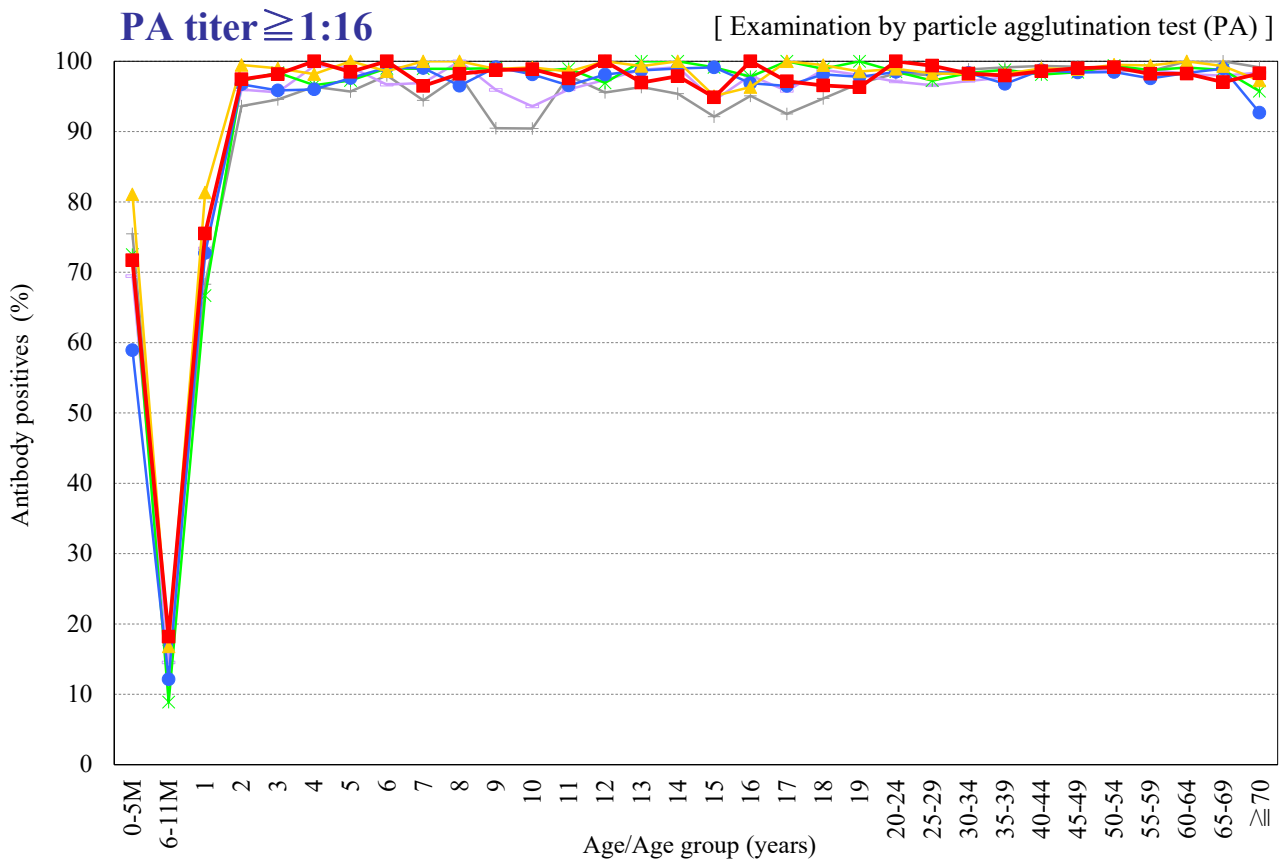


# Age distribution of measles PA antibody positives in Japan, 2006~2021

— National Epidemiological Surveillance of Vaccine-Preventable Diseases, 2021 —

(As of April 2022)



Year — 2006 (n=5,992) — 2009 (n=6,894) — 2012 (n=6,860) — 2015 (n=6,601) — 2018 (n=7,268) — 2021 (n=4,860)