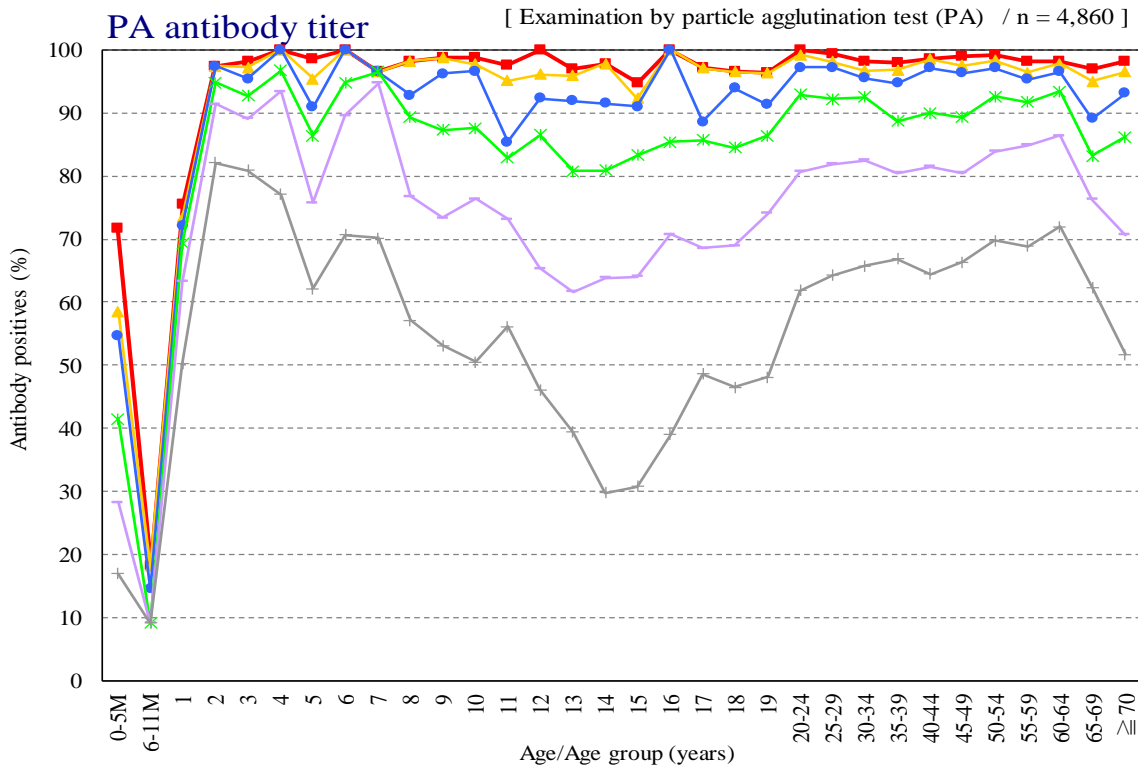


# Age distribution of measles antibody positives in Japan, 2021

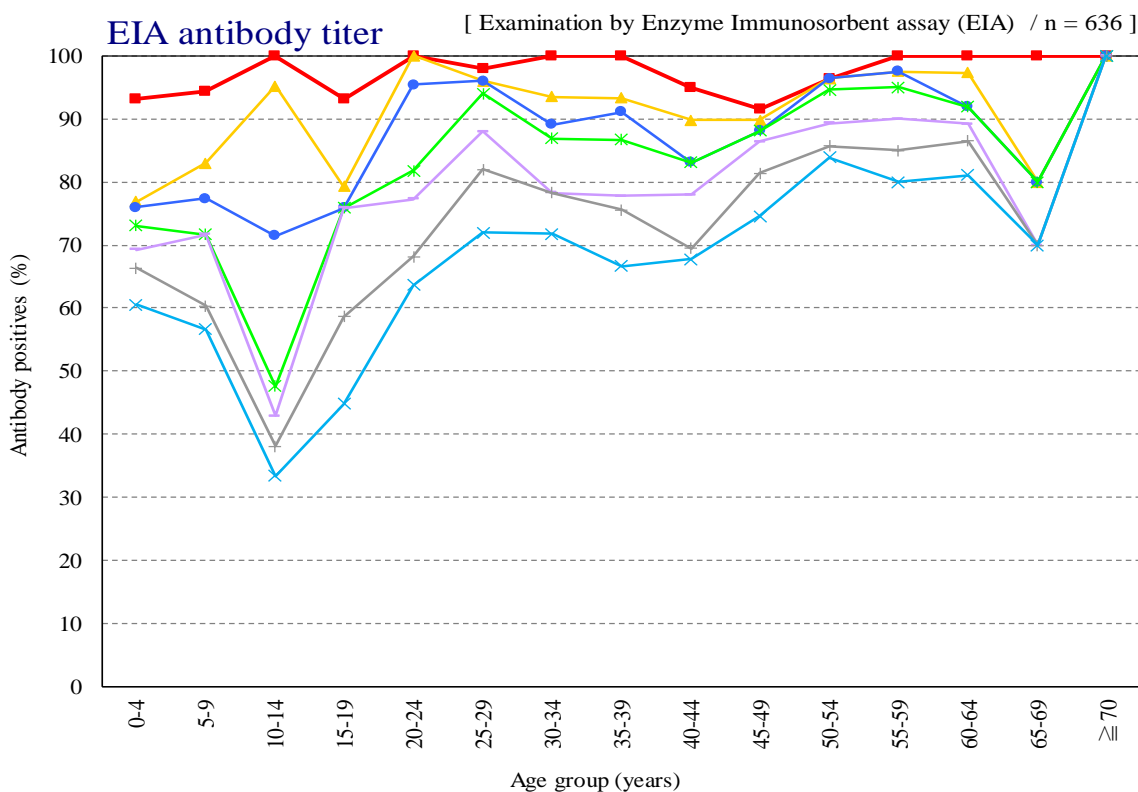
— National Epidemiological Surveillance of Vaccine-Preventable Diseases, 2021 —

(As of April 2022)



PA titer    ■  $\geq 1:16$     ▲  $\geq 1:32$     ●  $\geq 1:64$     \*  $\geq 1:128$     +  $\geq 1:256$     ×  $\geq 1:512$

NESVPD2021



EIA titer    ■  $\geq 2$     ▲  $\geq 4$     ●  $\geq 5$     \*  $\geq 6$     +  $\geq 8$     ×  $\geq 10$     \*  $\geq 12$

NESVPD2021