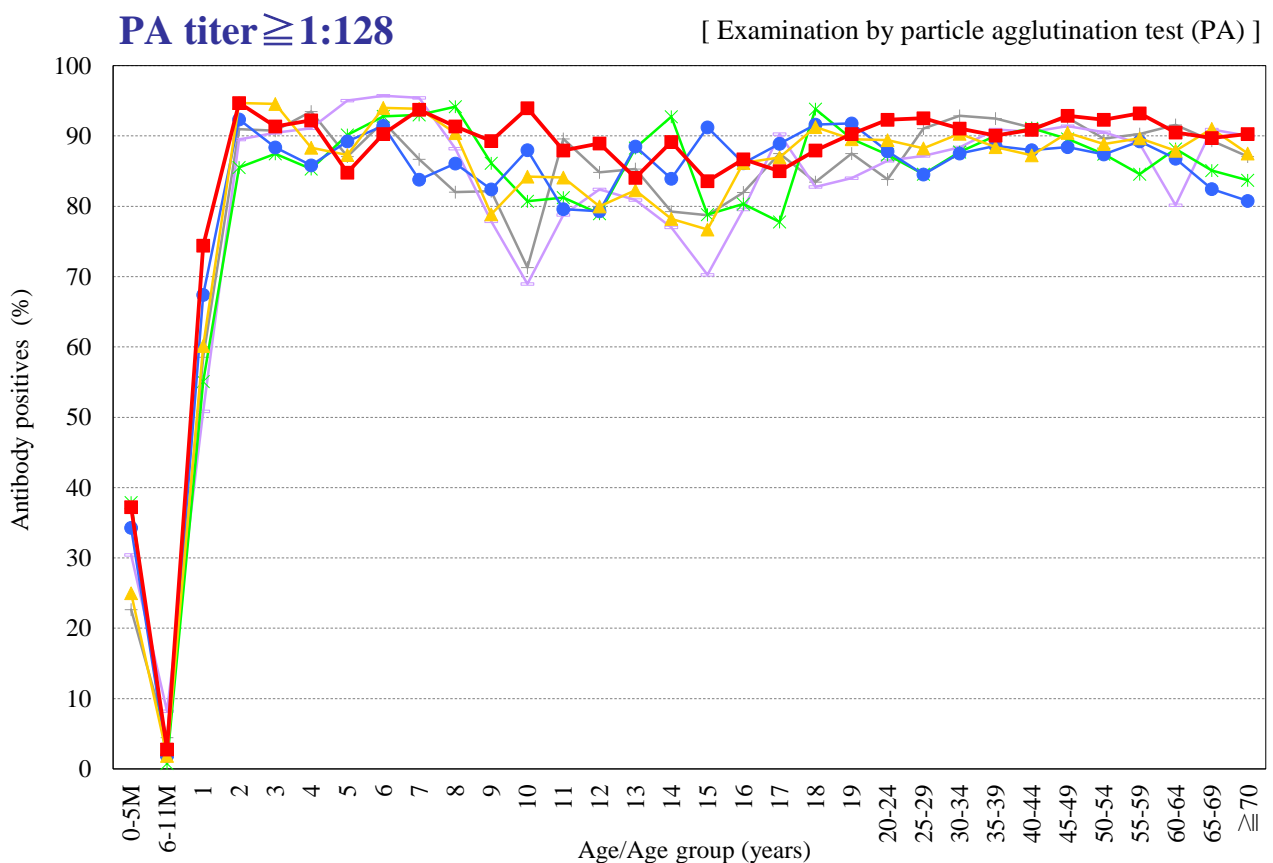
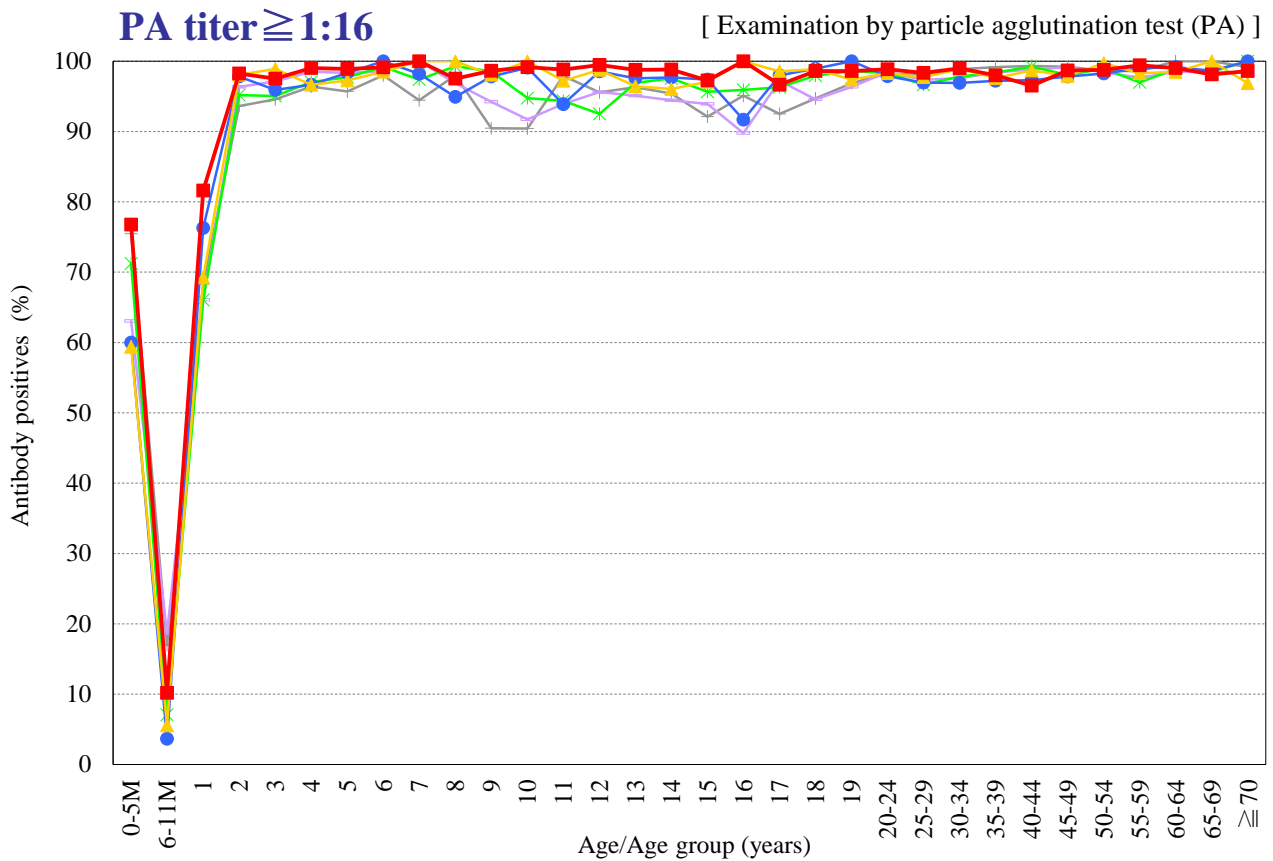


# Age distribution of measles PA antibody positives in Japan, 2006~2019

— National Epidemiological Surveillance of Vaccine-Preventable Diseases, 2019 —

(As of July 2020)



Year — 2006 (n=5,992) — 2008 (n=7,013) — 2010 (n=7,159) — 2013 (n=6,980) — 2016 (n=6,462) — 2019 (n=6,628)