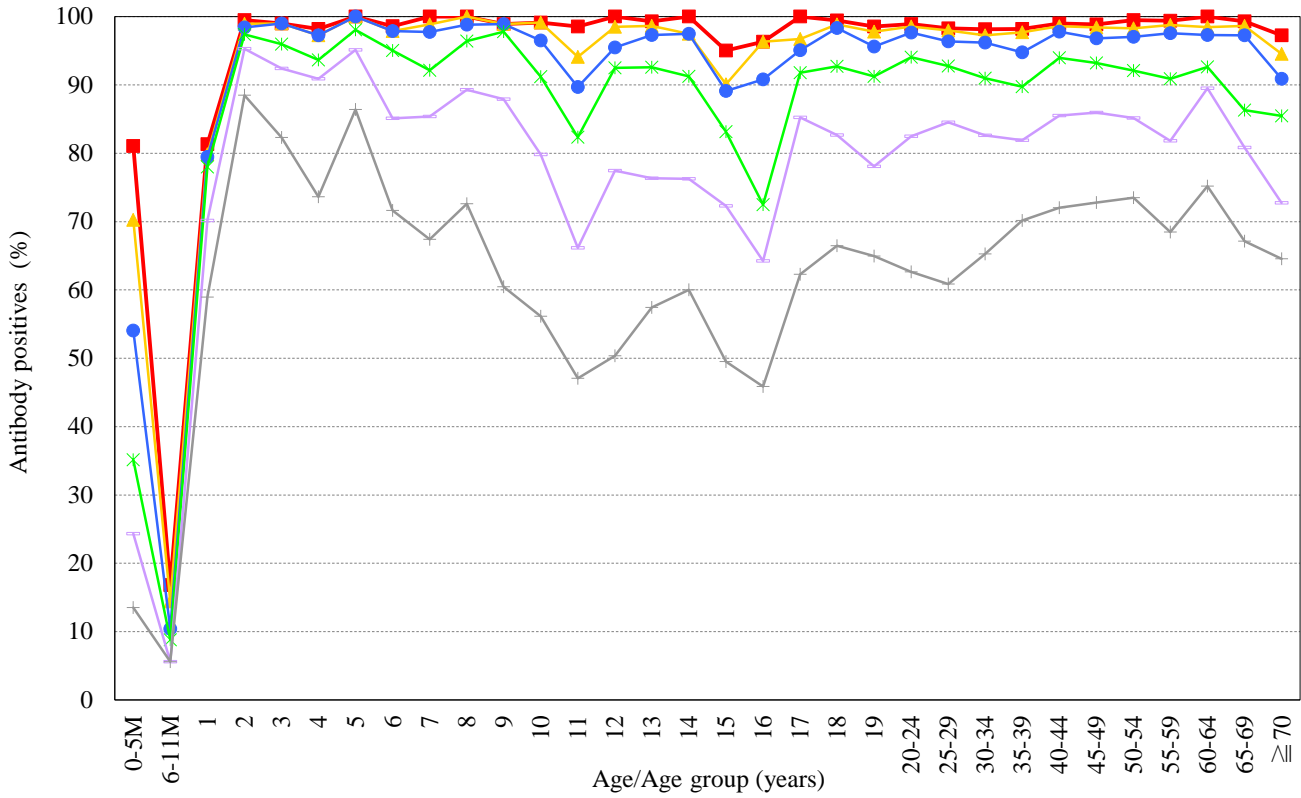


Age distribution of measles PA antibody positives in Japan, 2018

— National Epidemiological Surveillance of Vaccine-Preventable Diseases, 2018 —

(As of May 2019)

[Examination by particle agglutination test (PA) / n = 7,268]



PA titer ■ ≥ 1:16 ▲ ≥ 1:32 ● ≥ 1:64 * ≥ 1:128 + ≥ 1:256 † ≥ 1:512

NESVPD2018