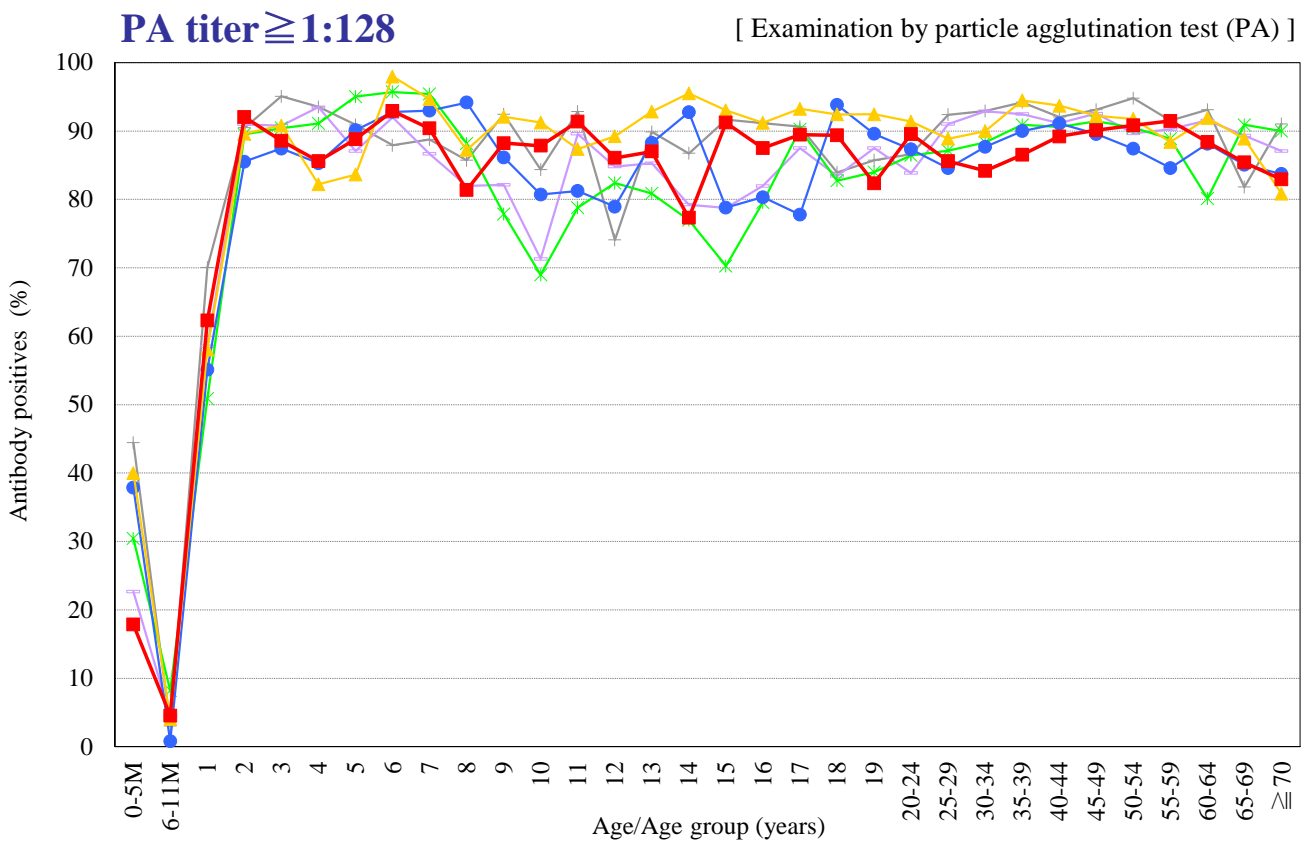
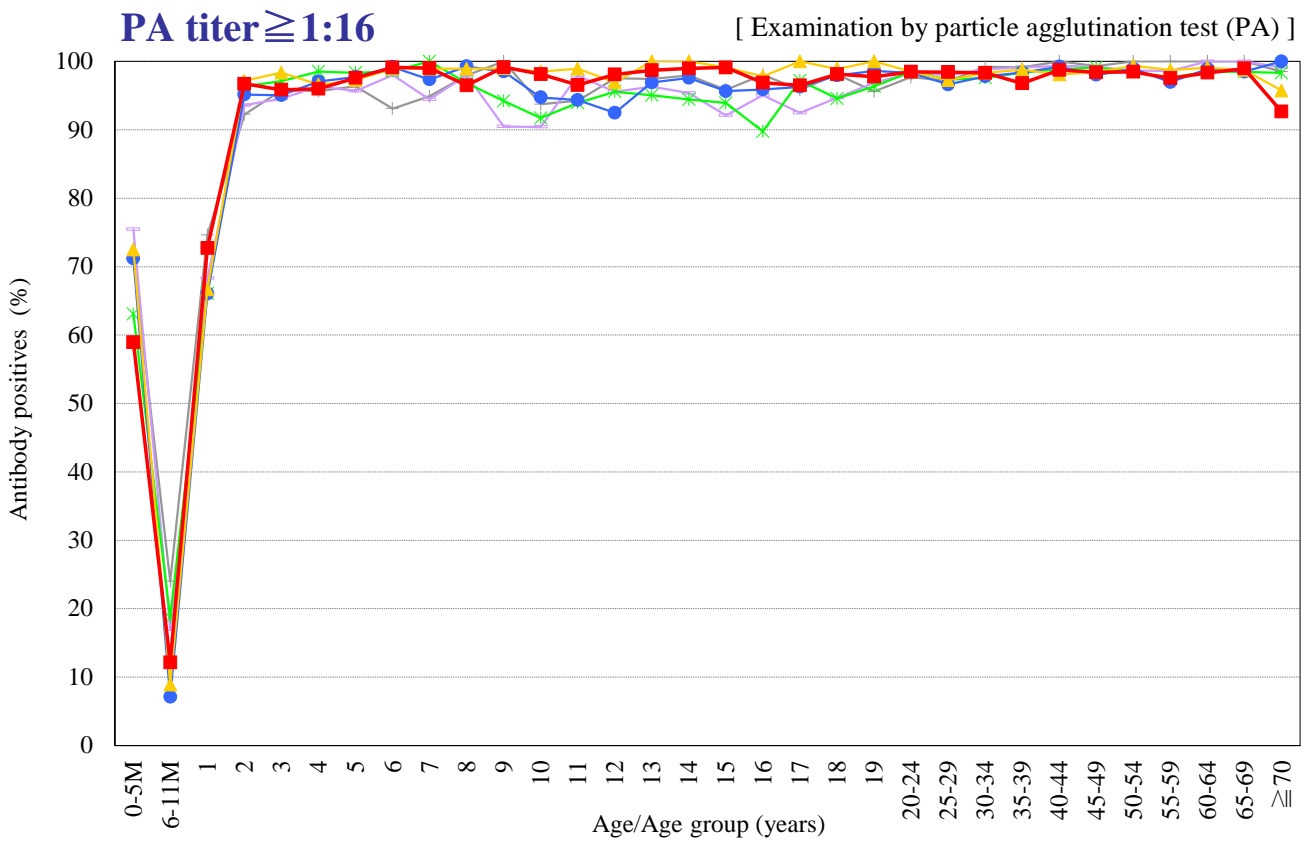


Age distribution of measles PA antibody positives in Japan, 2004~2015

— National Epidemiological Surveillance of Vaccine-Preventable Diseases, 2015 —



Year — 2004 (n=3989) — 2006 (n=5992) — 2008 (n=7013) — 2010 (n=7159) — 2012 (n=6860) — 2015 (n=6601)