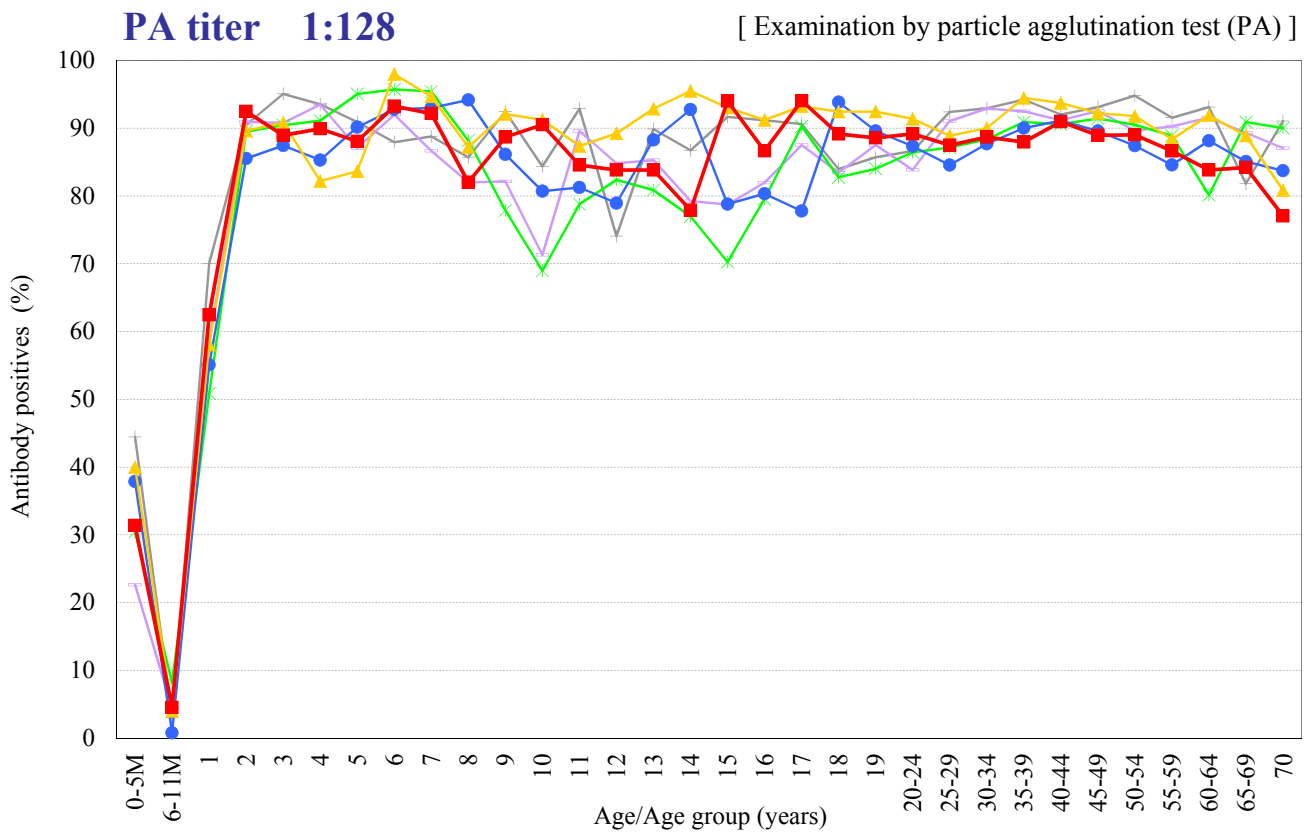
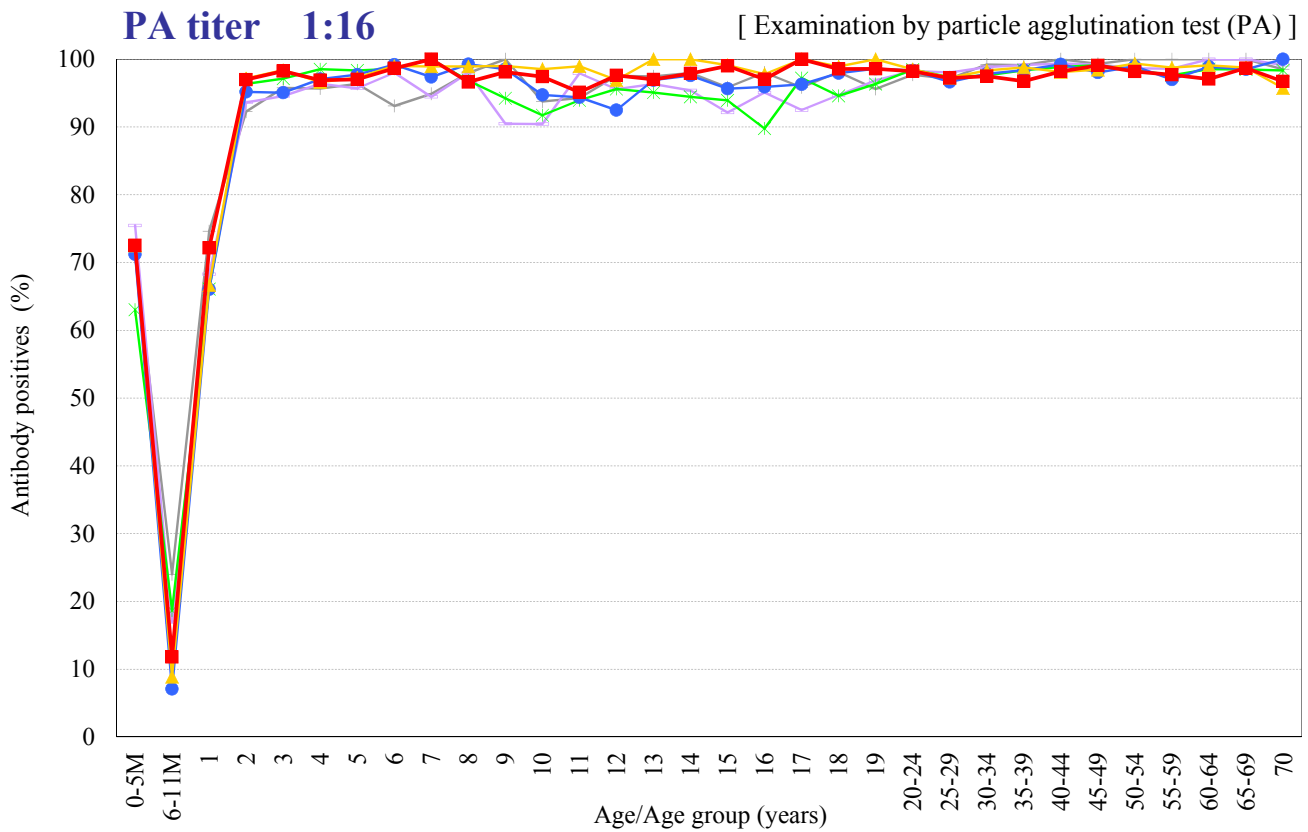


Age distribution of measles PA antibody positives in Japan, 2004 ~ 2014

- National Epidemiological Surveillance of Vaccine-Preventable Diseases, 2014 -

(As of Mar. 2015)



Year — 2004 (n=3989) — 2006 (n=5992) — 2008 (n=7013) — 2010 (n=7159) — 2012 (n=6860) — 2014 (n=6785)