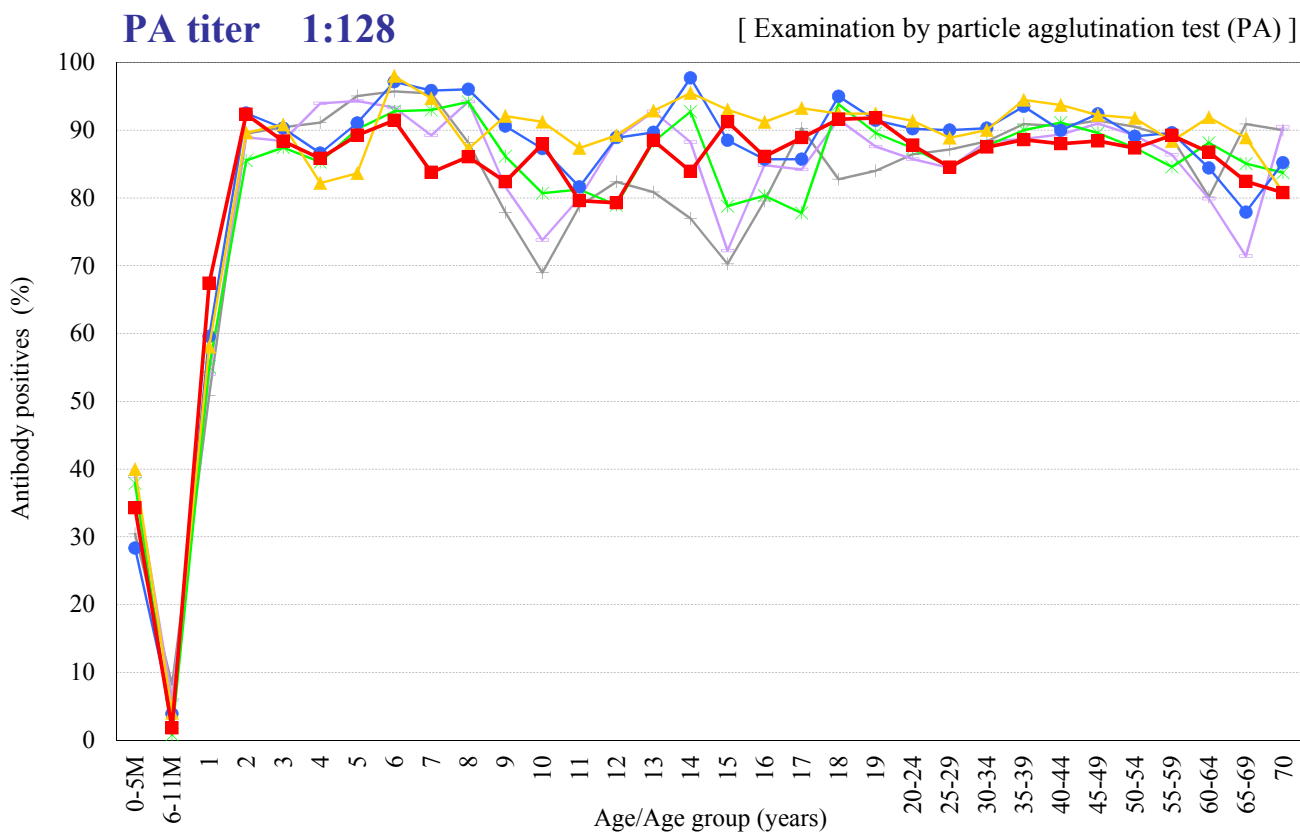
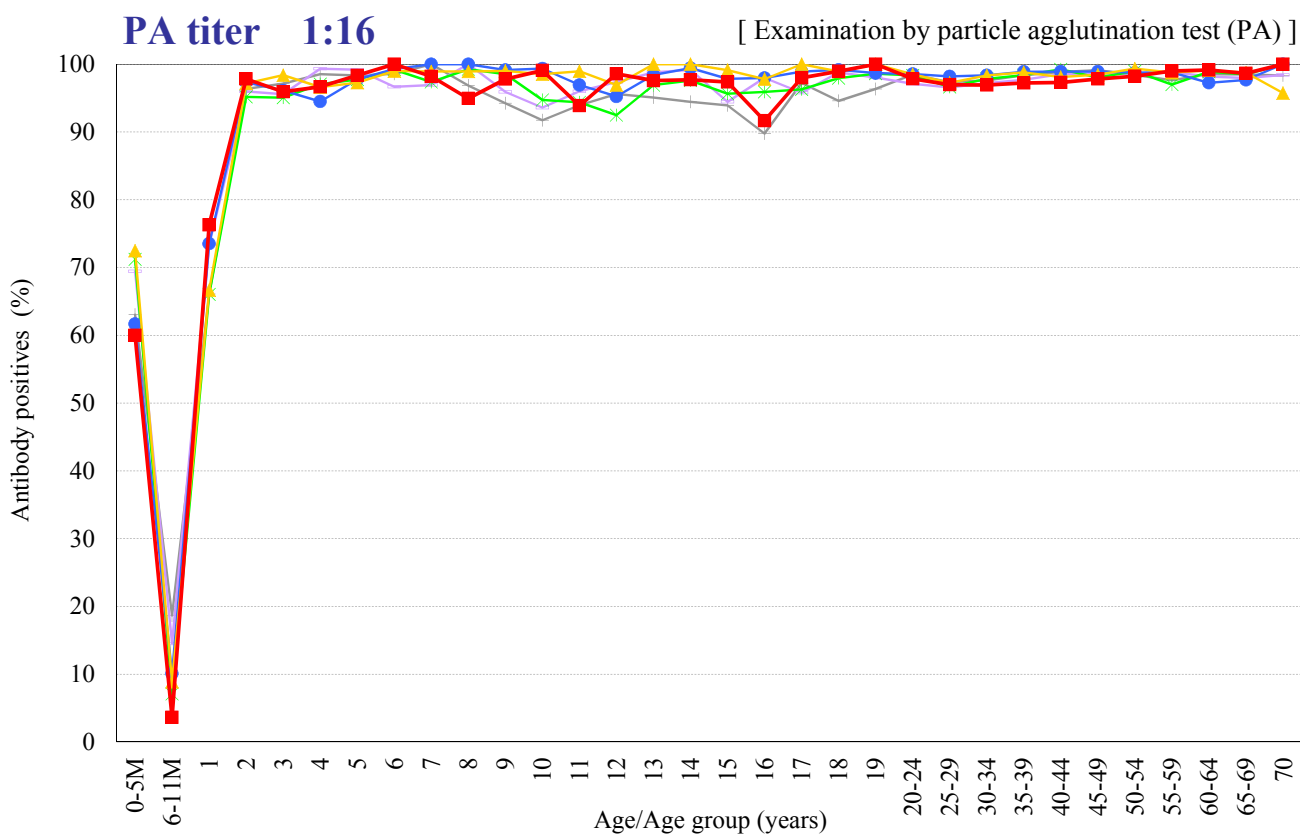


# Age distribution of measles PA antibody positives in Japan, 2008 ~ 2013

- National Epidemiological Surveillance of Vaccine-Preventable Diseases, 2013 -



Year — 2008 (n=7013) — 2009 (n=6894) — 2010 (n=7159) — 2011 (n=7412) — 2012 (n=6860) — 2013 (n=6980)