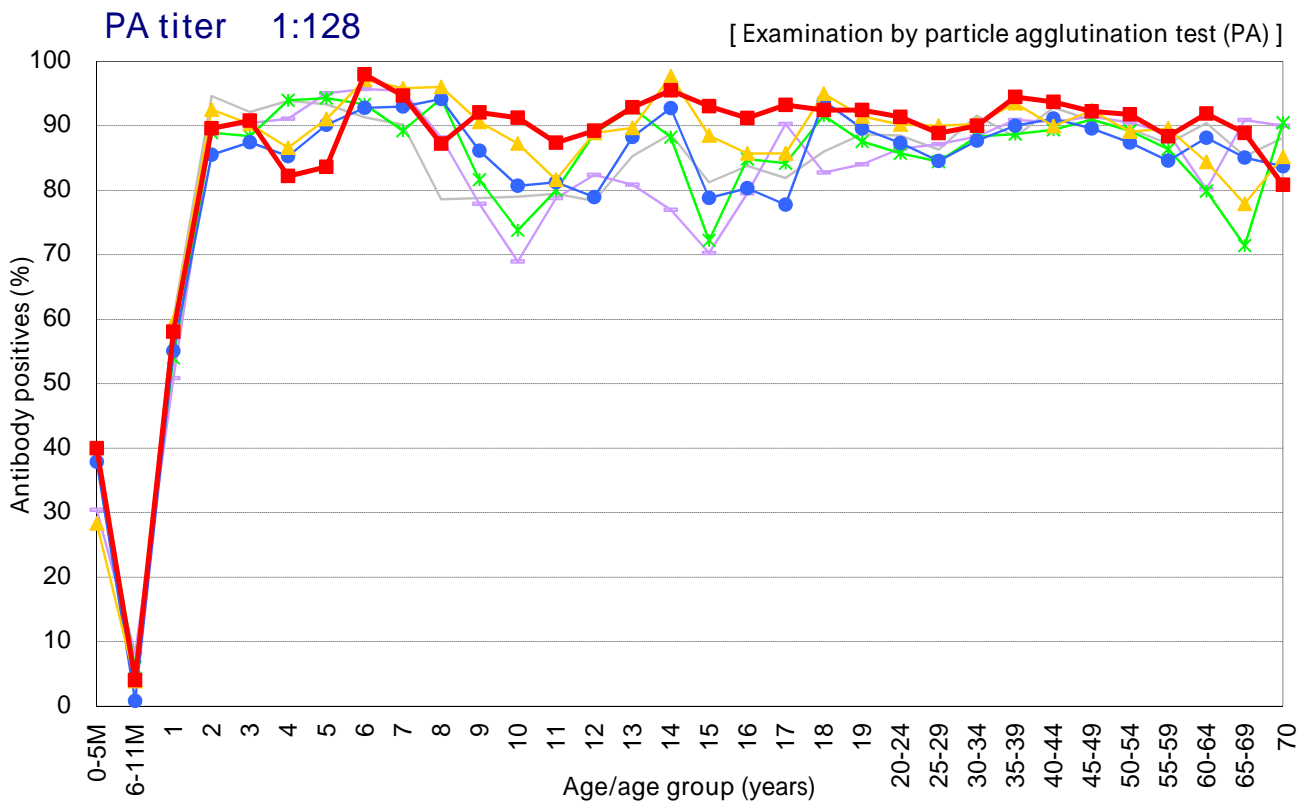
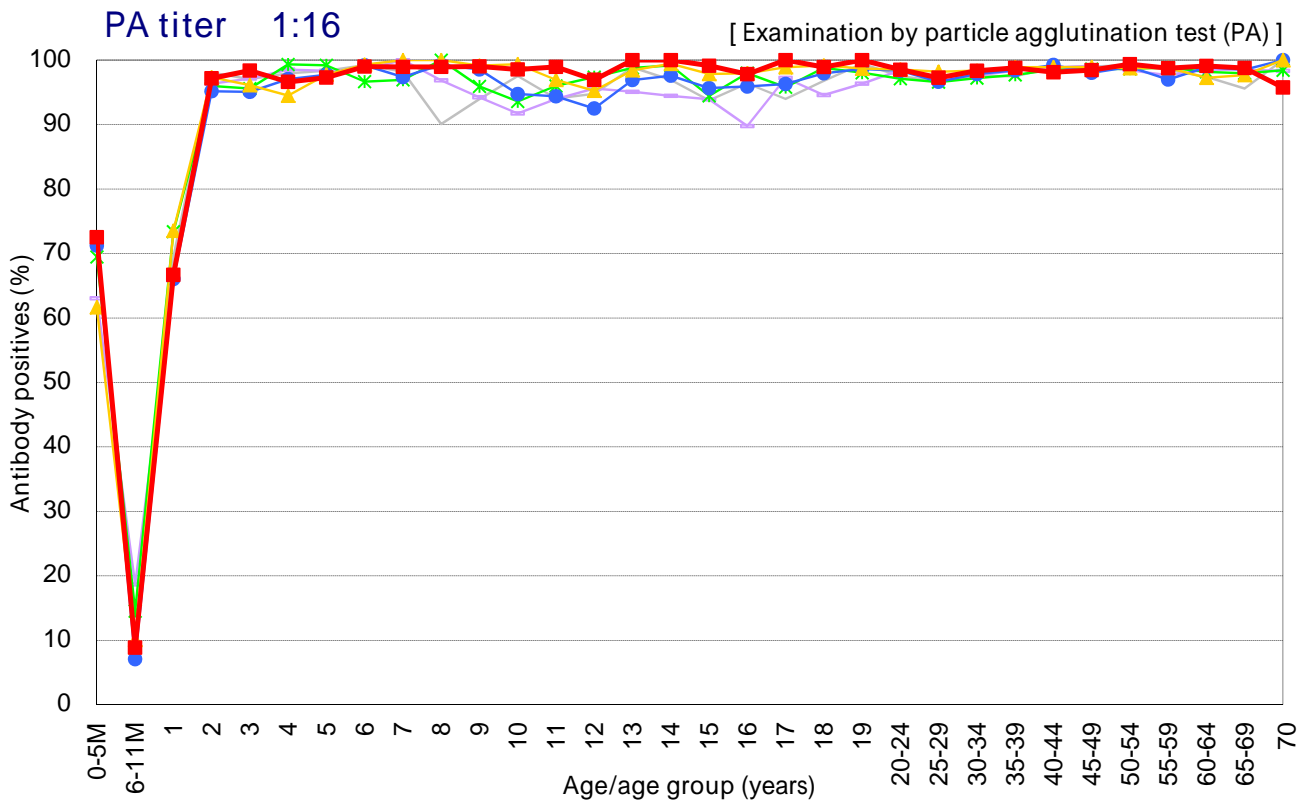


Age distribution of measles PA antibody positives in Japan, 2007 ~ 2012

- National Epidemiological Surveillance of Vaccine-Preventable Diseases, 2012 -



Year — 2007 [n=6939] — 2008 [n=7013] — 2009 [n=6894] — 2010 [n=7159] — 2011 [n=7412] — 2012 [n=6860]

