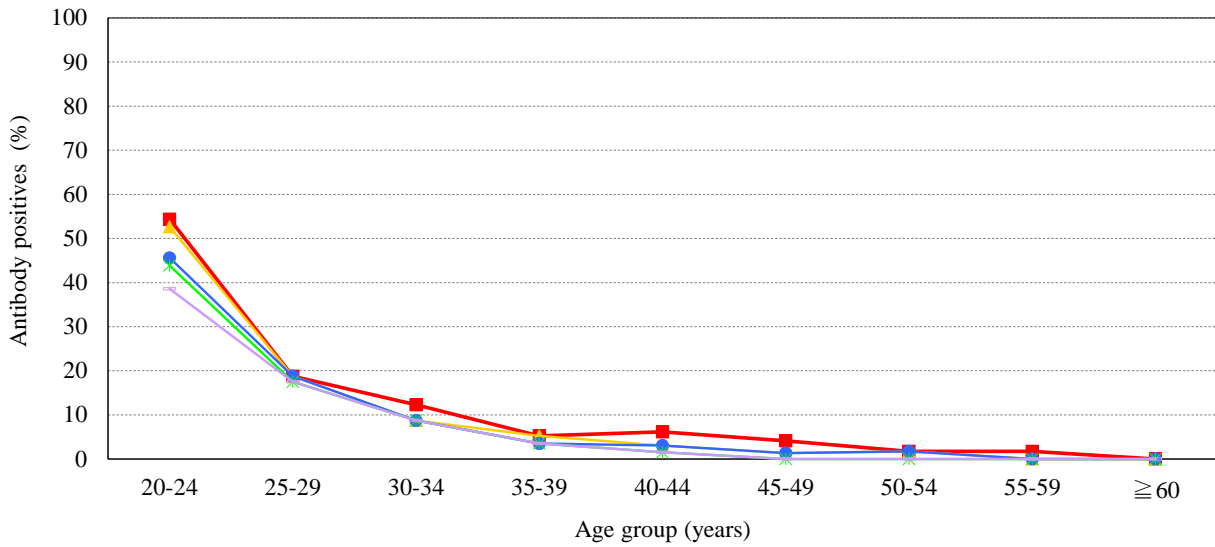


# Age distribution of HPV-16 IgG antibody positives in Japan, 2019

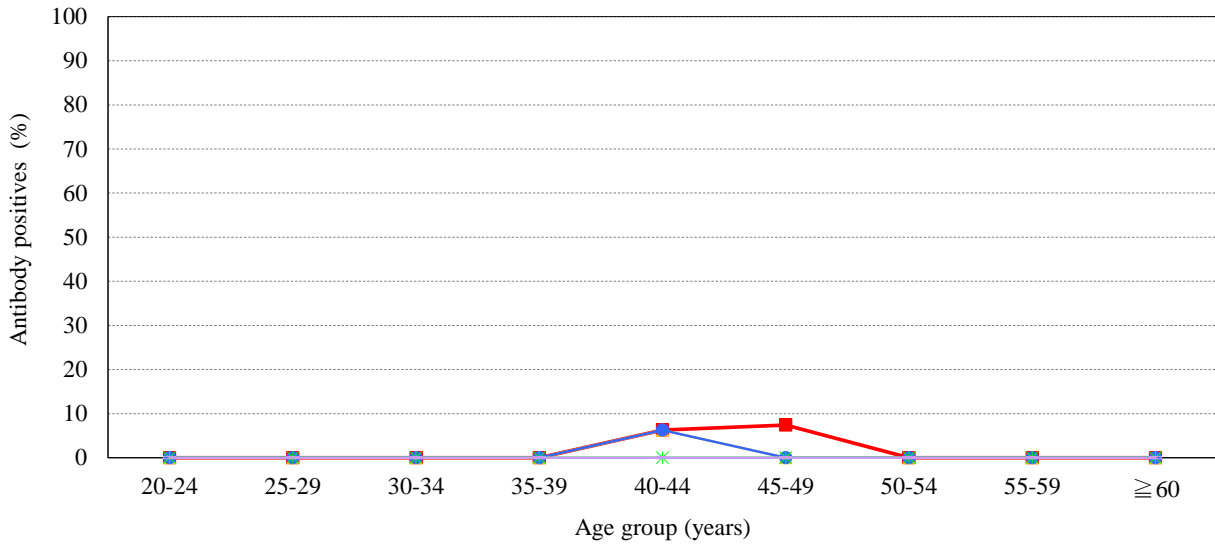
— National Epidemiological Surveillance of Vaccine-Preventable Diseases, 2019 —

( As of )

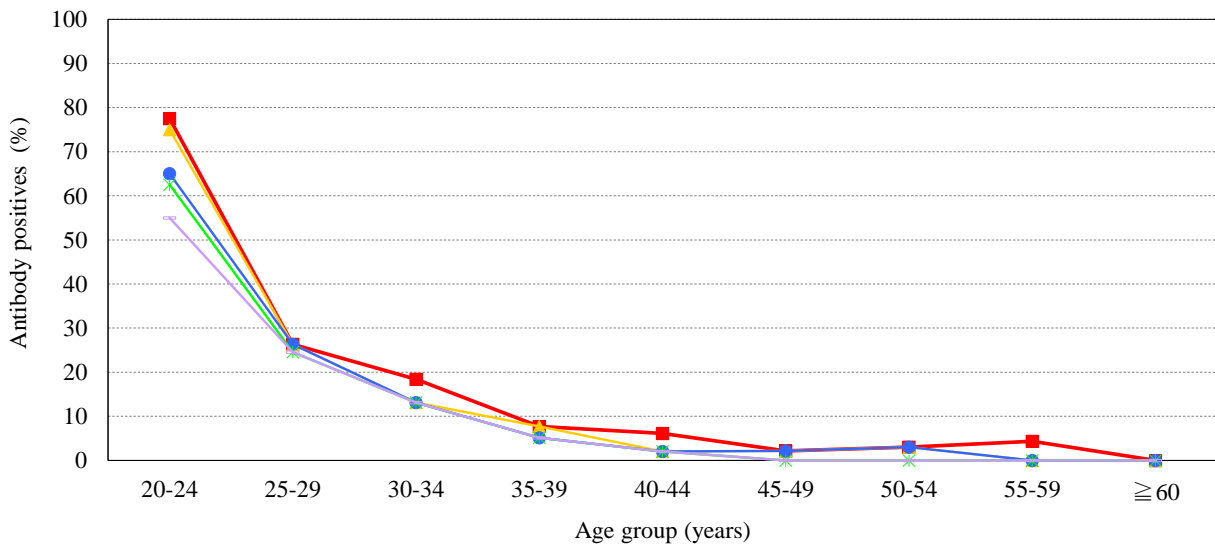
## Male & Female [ Examination by enzyme-linked immunosorbent assay (ELISA) / n = 553 ]



## Male [ Examination by enzyme-linked immunosorbent assay (ELISA) / n = 207 ]



## Female [ Examination by enzyme-linked immunosorbent assay (ELISA) / n = 346 ]



IgG titer    ■ ≥4    ▲ ≥8    ● ≥16    \* ≥32    ▼ ≥64    (IU/mL)