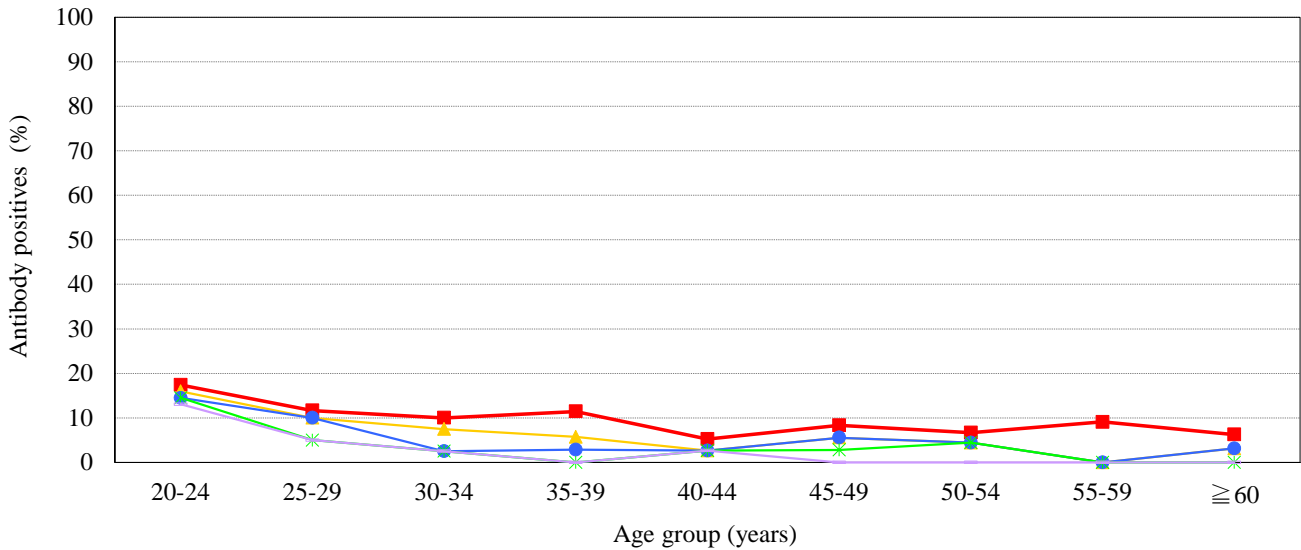


Age distribution of HPV-16 IgG antibody positives in Japan, 2015

— National Epidemiological Surveillance of Vaccine-Preventable Diseases, 2015 —

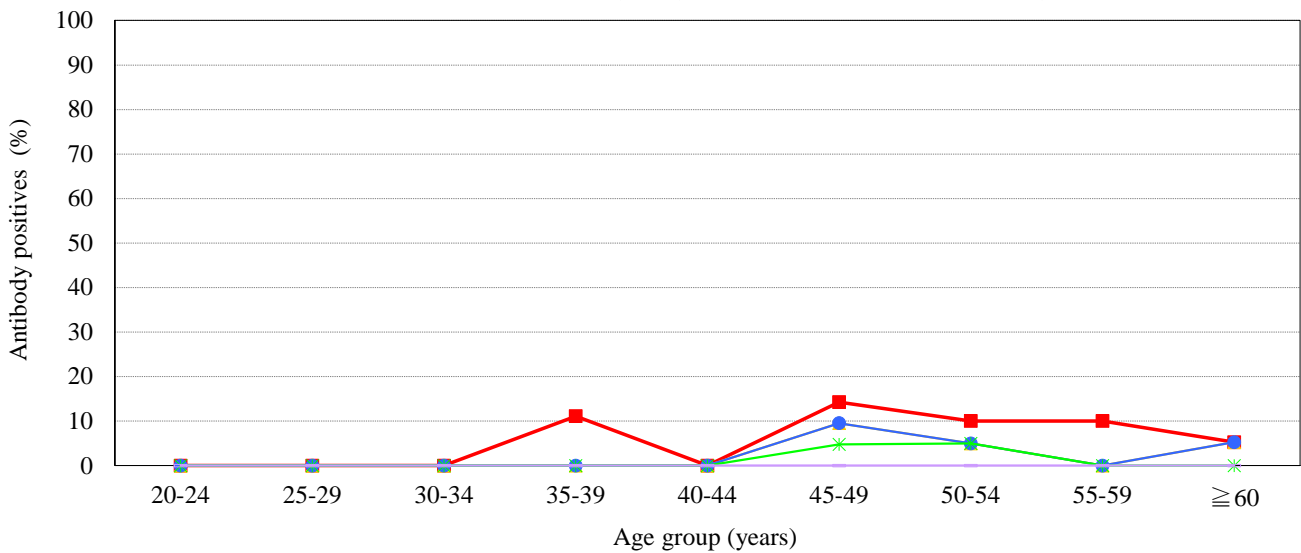
Male & Female

[Examination by enzyme-linked immunosorbent assay (ELISA) / n = 388]



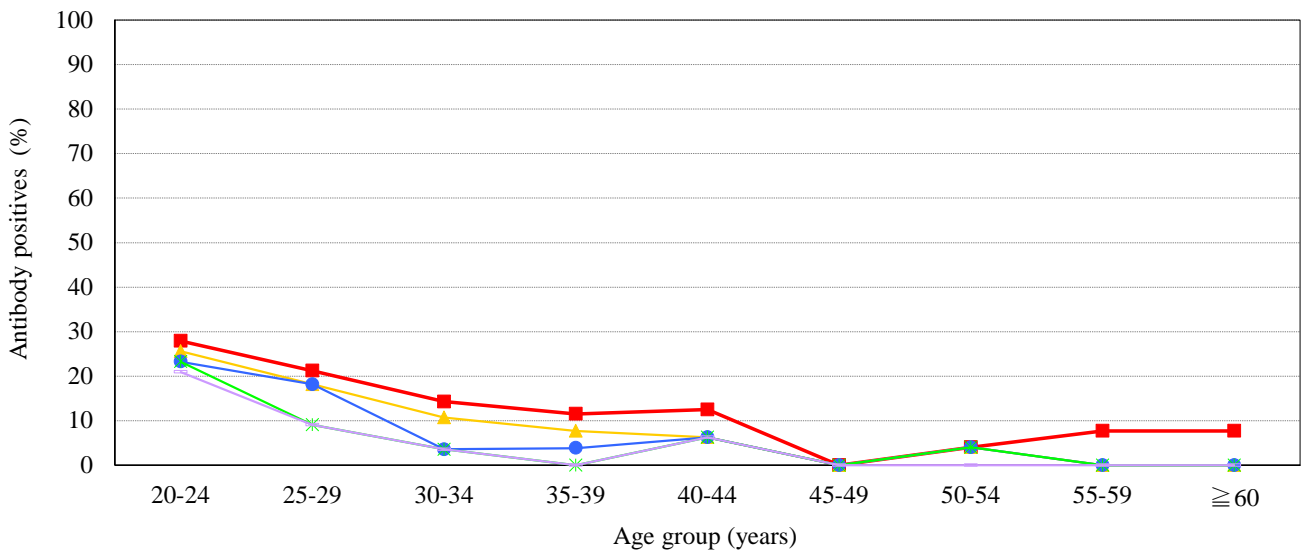
Male

[Examination by enzyme-linked immunosorbent assay (ELISA) / n = 176]



Female

[Examination by enzyme-linked immunosorbent assay (ELISA) / n = 212]



IgG titer ■ ≥4 ▲ ≥8 ● ≥16 * ≥32 □ ≥64 (IU/mL)