

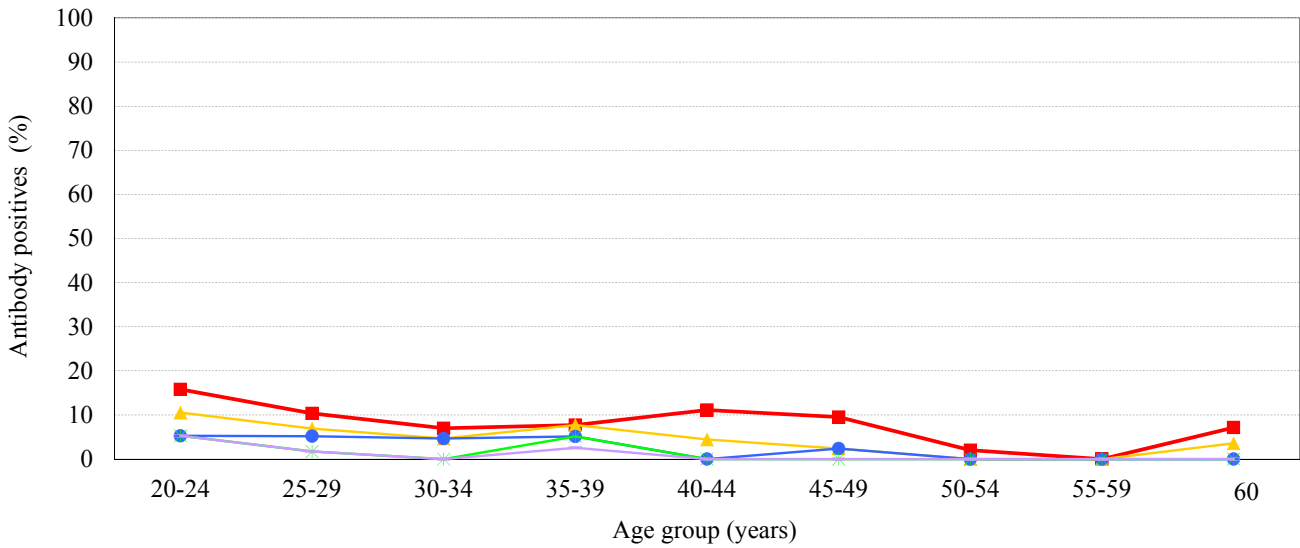
Age distribution of HPV-16 IgG antibody positives in Japan, 2014

- National Epidemiological Surveillance of Vaccine-Preventable Diseases, 2014 -

(As of Mar. 2015)

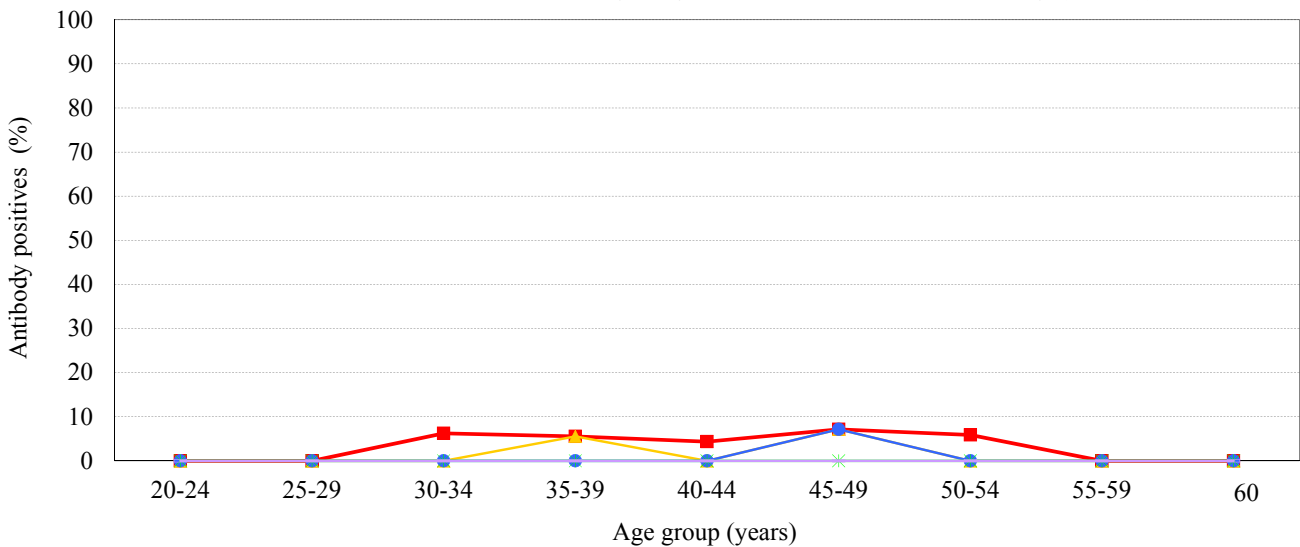
Male & Female

[Examination by enzyme-linked immunosorbent assay (ELISA) / n = 371]



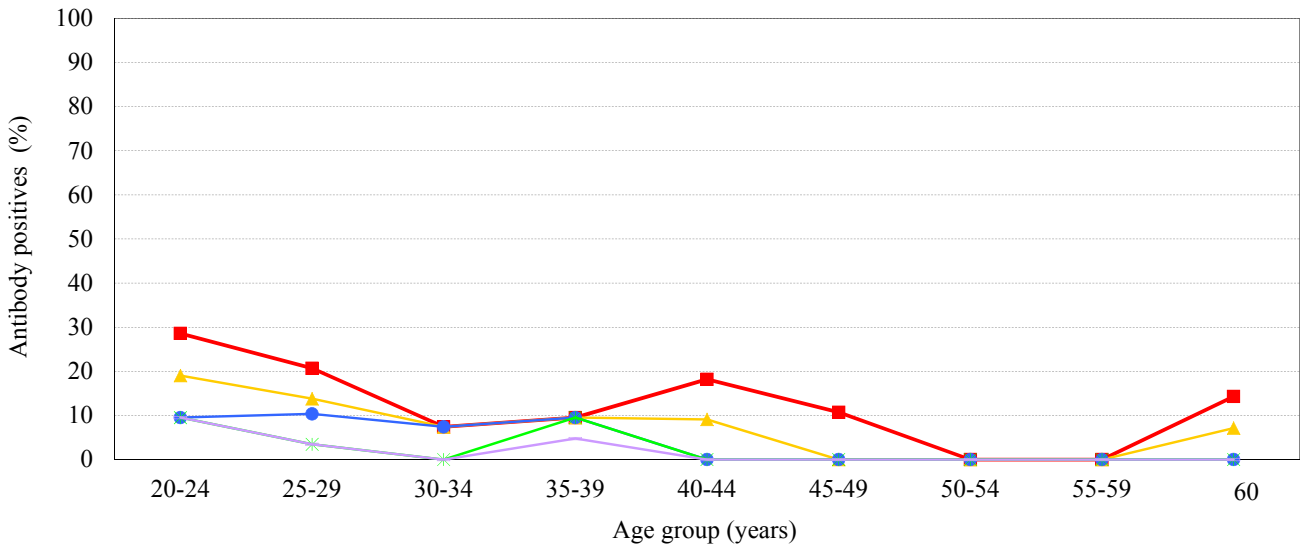
Male

[Examination by enzyme-linked immunosorbent assay (ELISA) / n = 161]



Female

[Examination by enzyme-linked immunosorbent assay (ELISA) / n = 210]



IgG titer ■ 4 ▲ 8 ● 16 * 32 ◻ 64 (IU/mL)