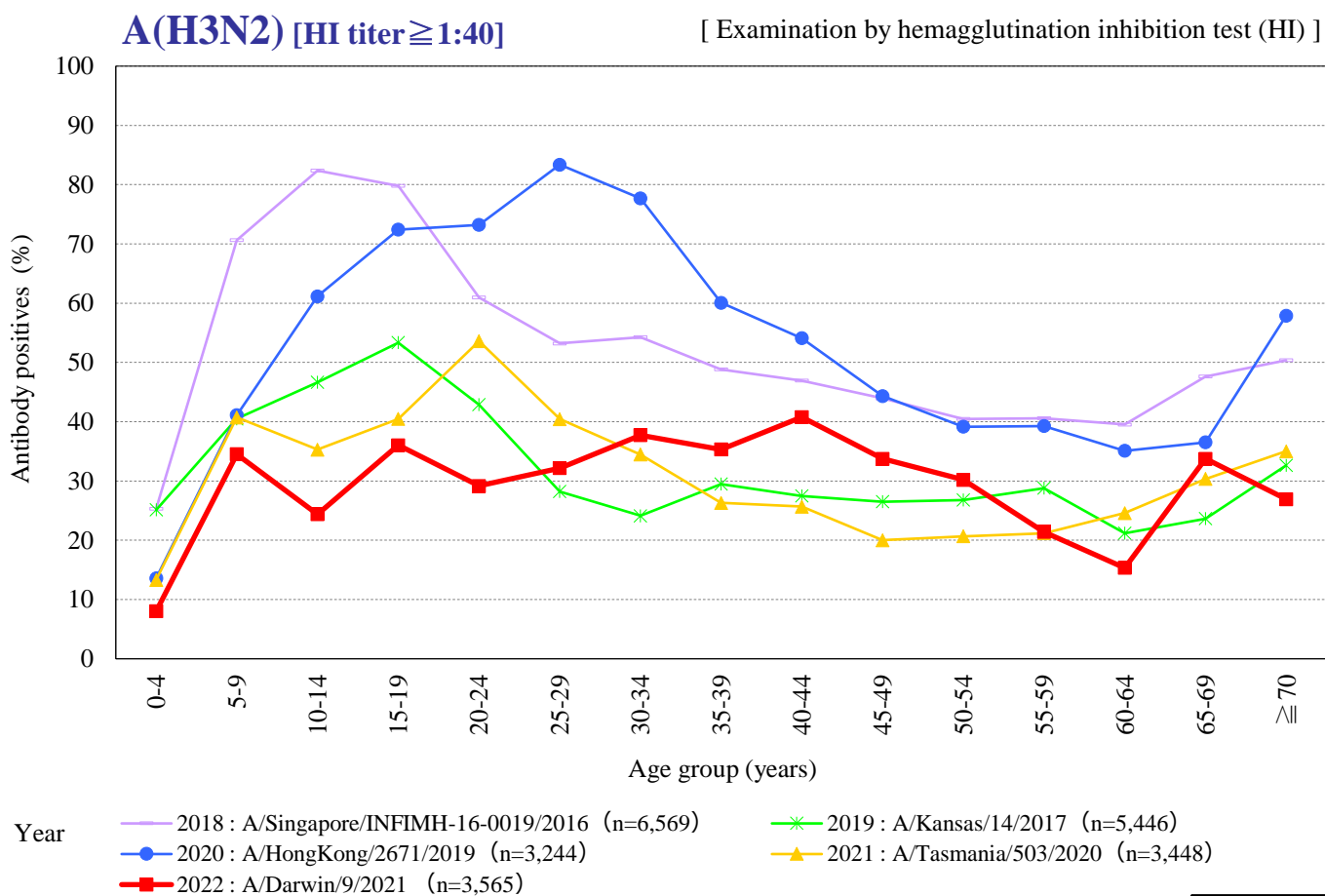
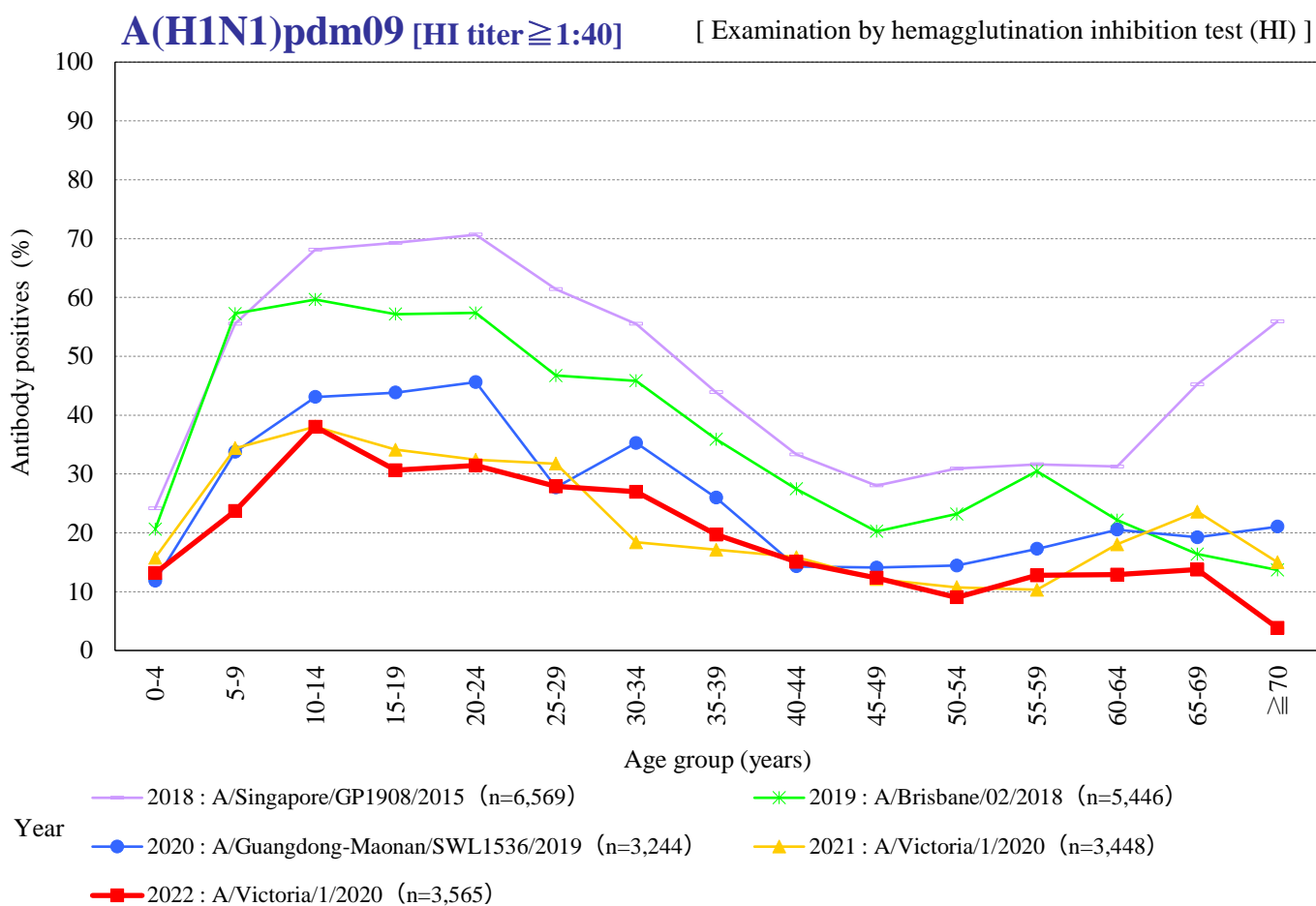


# Age distribution of influenza HI antibody positives in Japan, 2018~2022

— National Epidemiological Surveillance of Vaccine-Preventable Diseases, 2022 —

(As of April 2023)

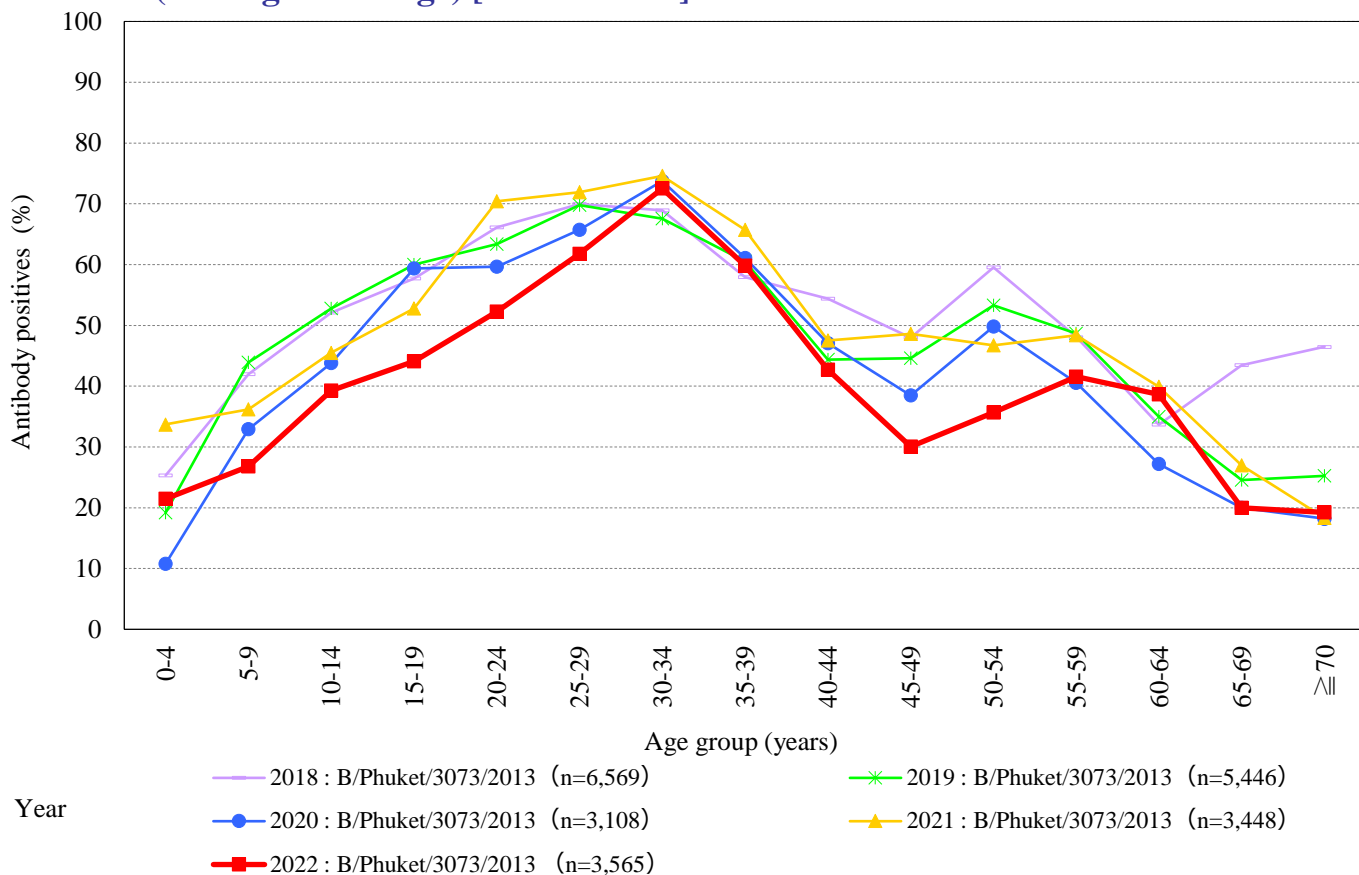


# Age distribution of influenza HI antibody positives in Japan, 2018~2022

— National Epidemiological Surveillance of Vaccine-Preventable Diseases, 2022 —

(As of April 2023)

## B(Yamagata lineage) [HI titer $\geq 1:40$ ] [Examination by hemagglutination inhibition test (HI)]



## B(Victoria lineage) [HI titer $\geq 1:40$ ] [Examination by hemagglutination inhibition test (HI)]

