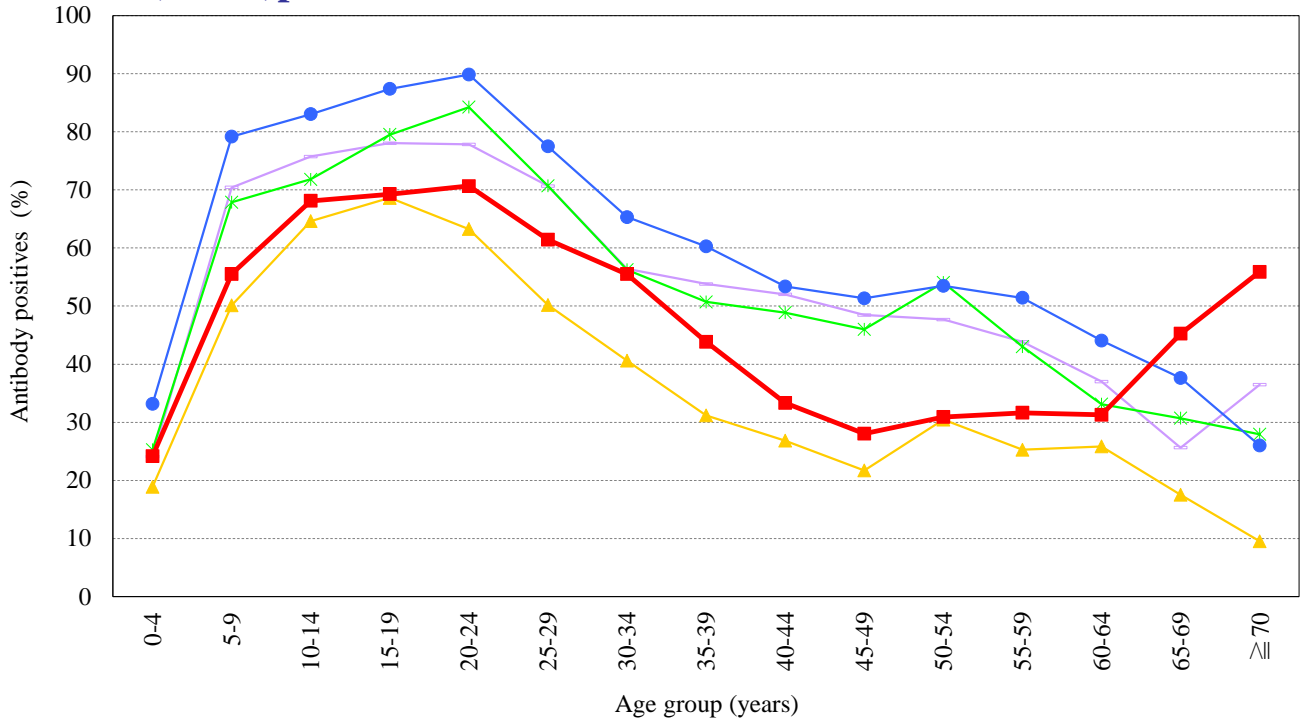


Age distribution of influenza HI antibody positives in Japan, 2014~2018

— National Epidemiological Surveillance of Vaccine-Preventable Diseases, 2018 —

(As of May 2019)

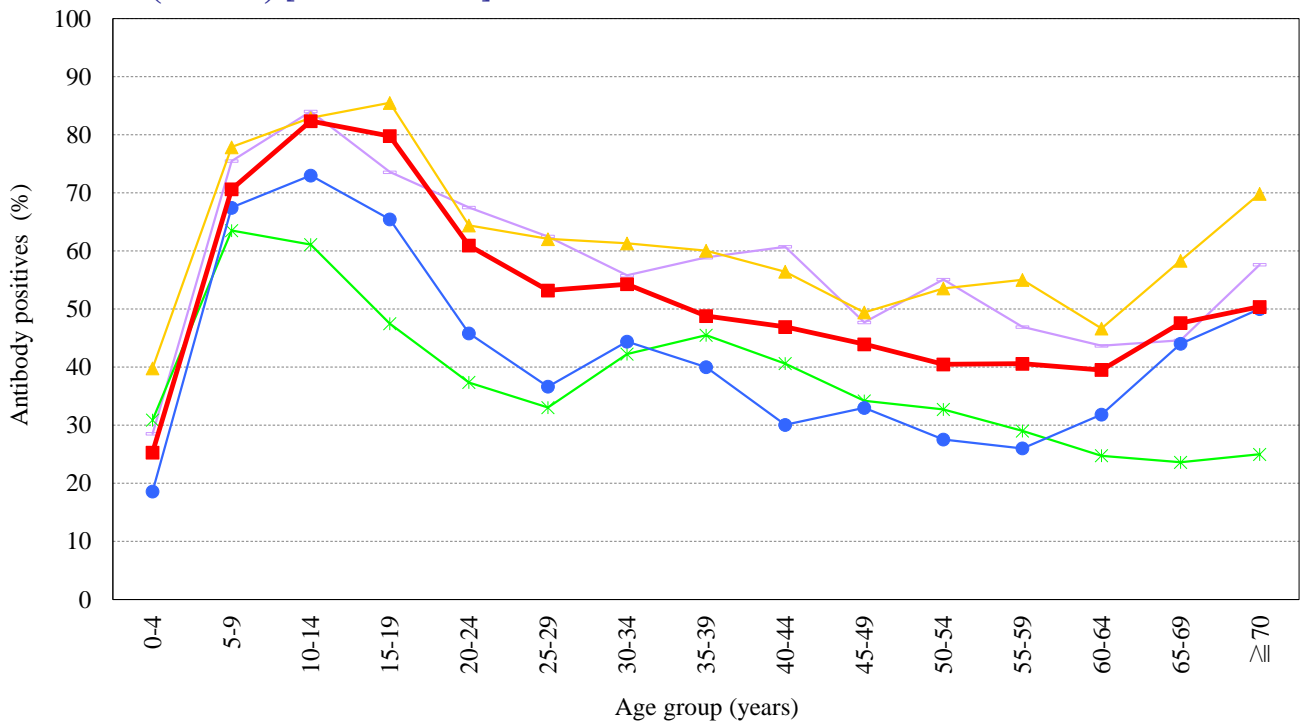
A(H1N1)pdm09 [HI titer $\geq 1:40$] [Examination by hemagglutination inhibition test (HI)]



Year

- 2014 : A/California/7/2009 (n=6,804)
- 2015 : A/California/7/2009 (n=6,584)
- 2016 : A/California/7/2009 (n=5,883)
- 2017 : A/Singapore/GP1908/2015 (n=5,864)
- 2018 : A/Singapore/GP1908/2015 (n=6,569)

A(H3N2) [HI titer $\geq 1:40$] [Examination by hemagglutination inhibition test (HI)]



Year

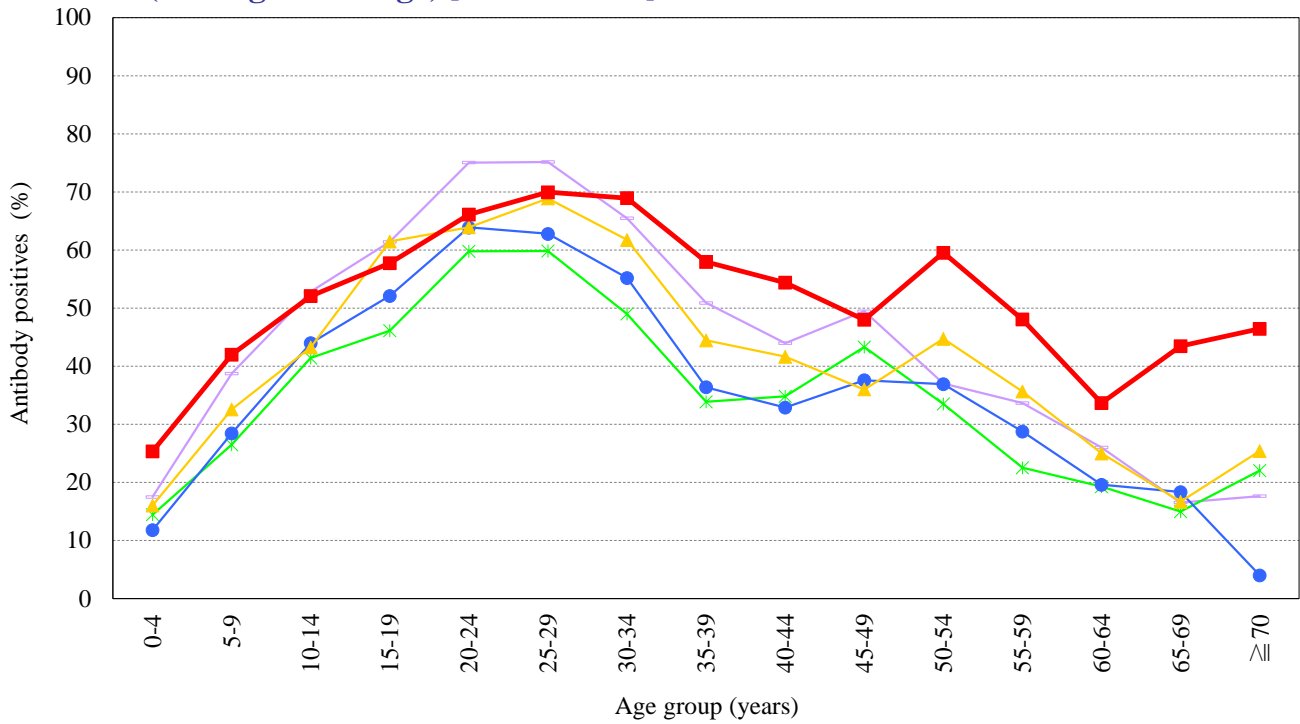
- 2014 : A/New York/39/2012 (n=6,804)
- 2015 : A/Switzerland/9715293/2013 (n=6,583)
- 2016 : A/Hong Kong/4801/2014 (n=5,881)
- 2017 : A/Hong Kong/4801/2014 (n=5,864)
- 2018 : A/Singapore/INFIMH-16-0019/2016 (n=6,569)

Age distribution of influenza HI antibody positives in Japan, 2014~2018

— National Epidemiological Surveillance of Vaccine-Preventable Diseases, 2018 —

(As of May 2019)

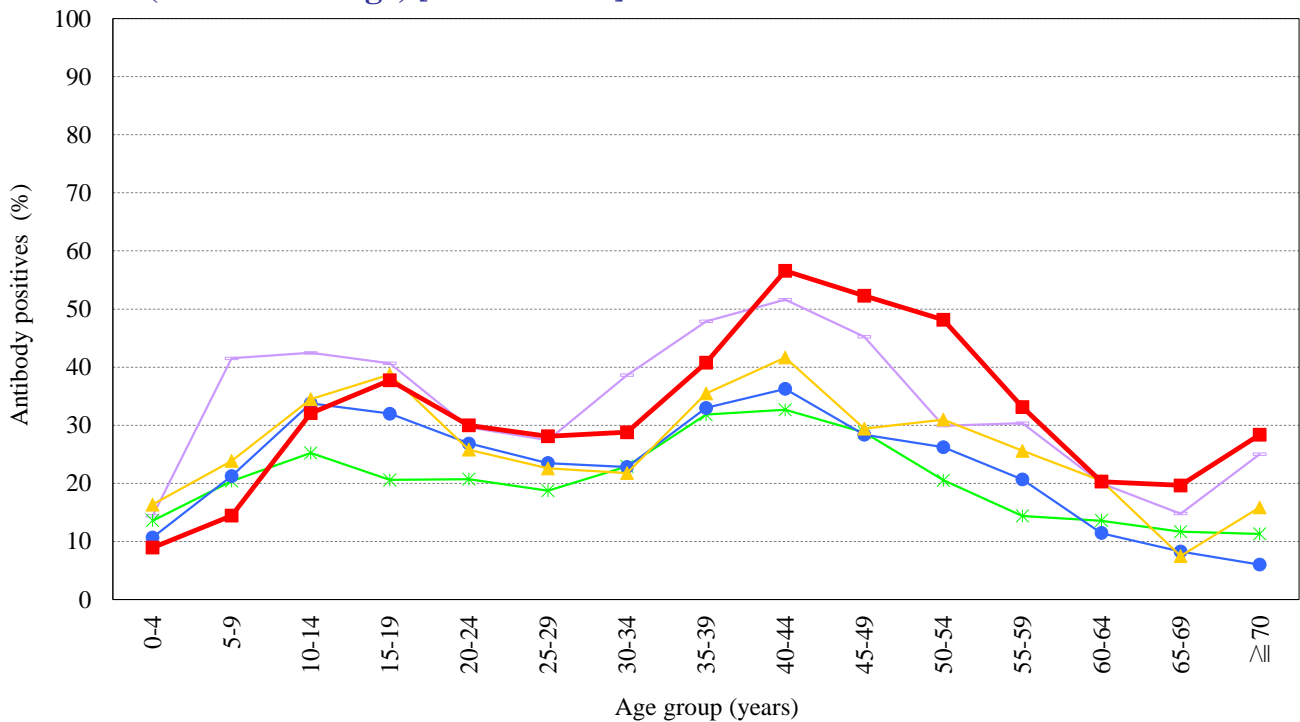
B(Yamagata lineage) [HI titer $\geq 1:40$] [Examination by hemagglutination inhibition test (HI)]



Year

- 2014 : B/Massachusetts/02/2012 (n=6,805)
- 2015 : B/Phuket/3073/2013 (n=6,584)
- 2016 : B/Phuket/3073/2013 (n=5,883)
- 2017 : B/Phuket/3073/2013 (n=5,863)
- 2018 : B/Phuket/3073/2013 (n=6,569)

B(Victoria lineage) [HI titer $\geq 1:40$] [Examination by hemagglutination inhibition test (HI)]



Year

- 2014 : B/Brisbane/60/2008 (n=6,629)
- 2015 : B/Texas/2/2013 (n=6,408)
- 2016 : B/Texas/2/2013 (n=5,883)
- 2017 : B/Texas/2/2013 (n=5,863)
- 2018 : B/Maryland/15/2016 (n=6,569)