

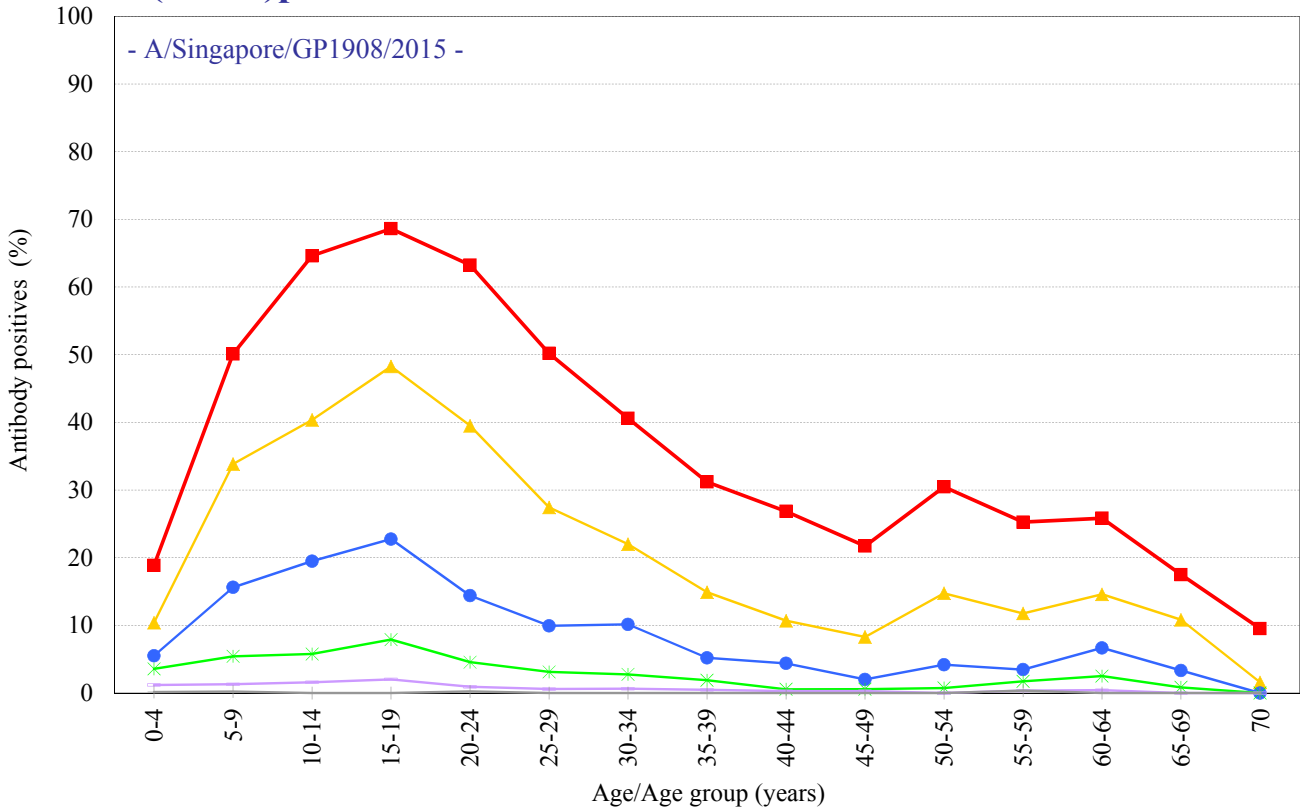
Age distribution of influenza HI antibody positives before 2017/18 season in Japan

- National Epidemiological Surveillance of Vaccine-Preventable Diseases, 2017 -

(As of May 2018)

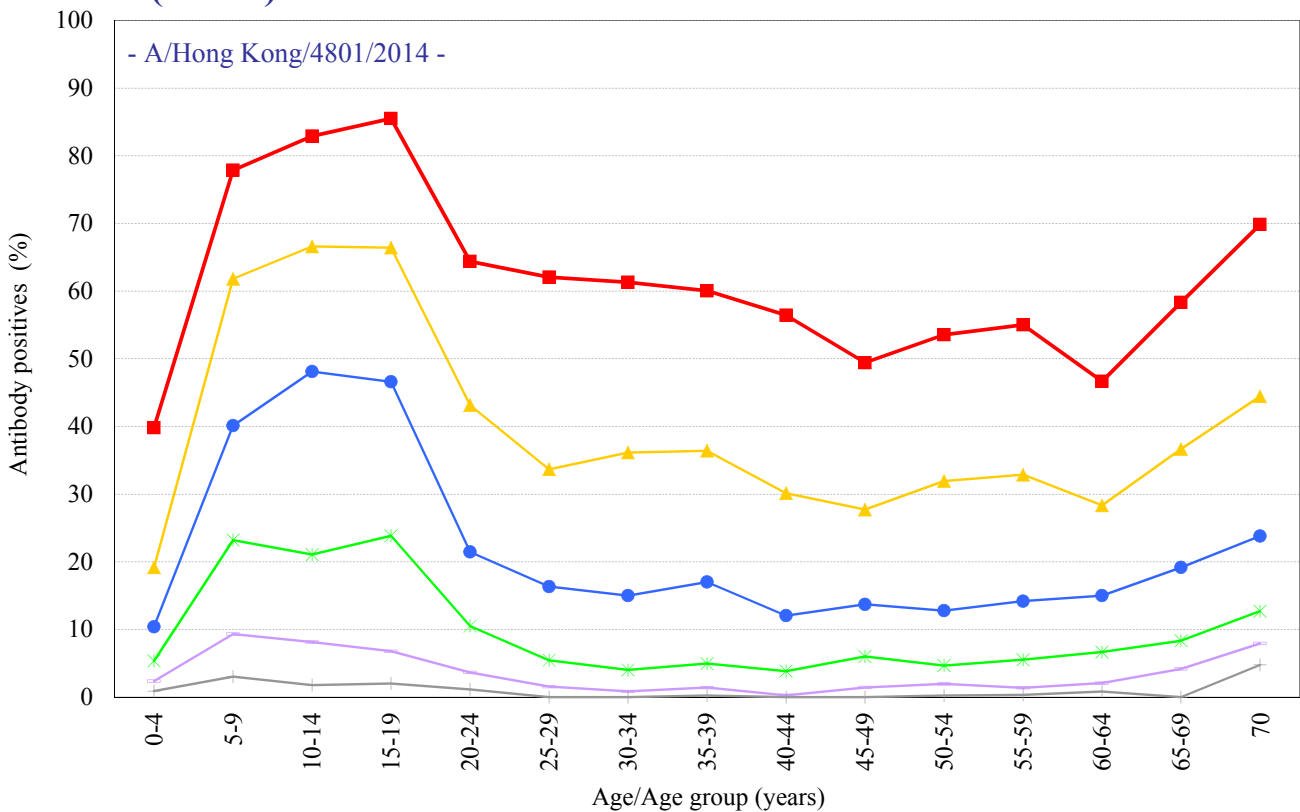
A(H1N1)pdm09

[Examination by hemagglutination inhibition test (HI) / n = 5,864]



A(H3N2)

[Examination by hemagglutination inhibition test (HI) / n = 5,864]



HI titer 1:40 1:80 1:160 1:320 1:640 1:1280

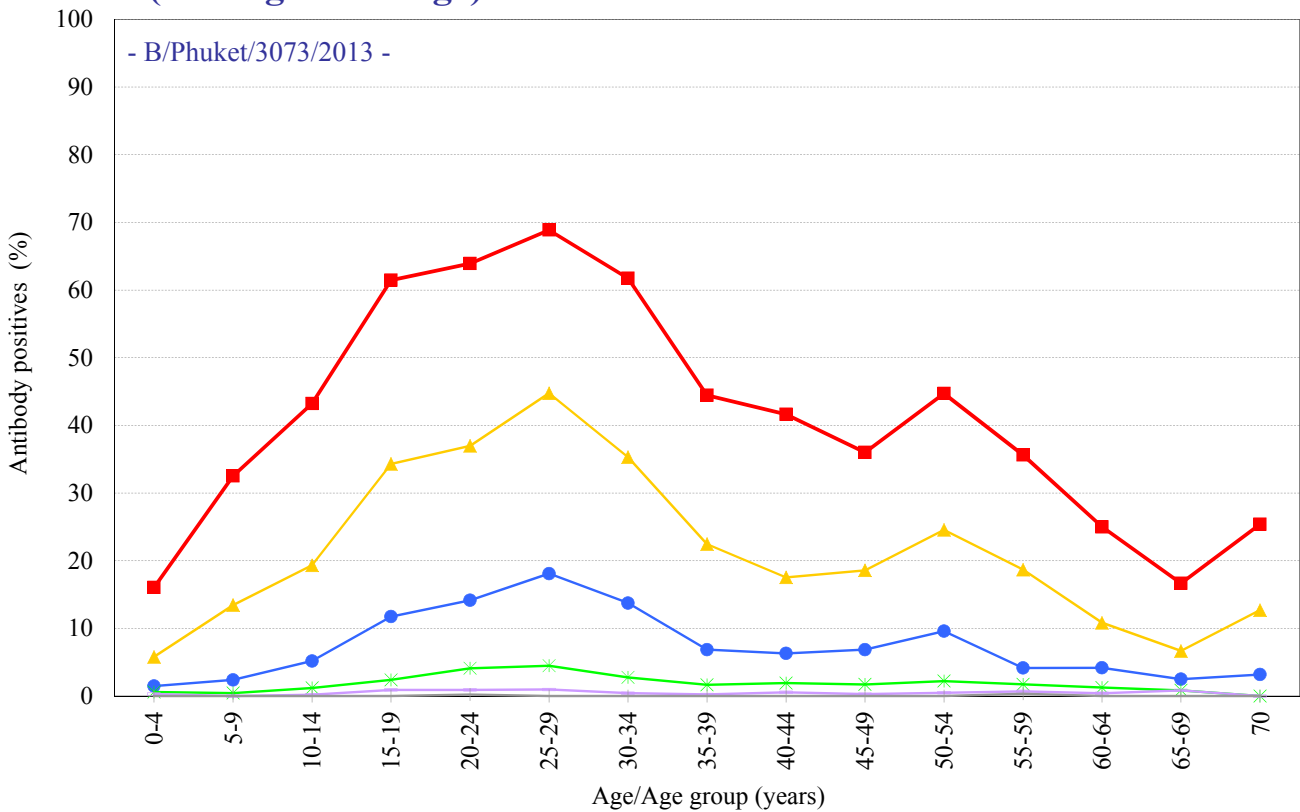
Age distribution of influenza HI antibody positives before 2017/18 season in Japan

- National Epidemiological Surveillance of Vaccine-Preventable Diseases, 2017 -

(As of May 2018)

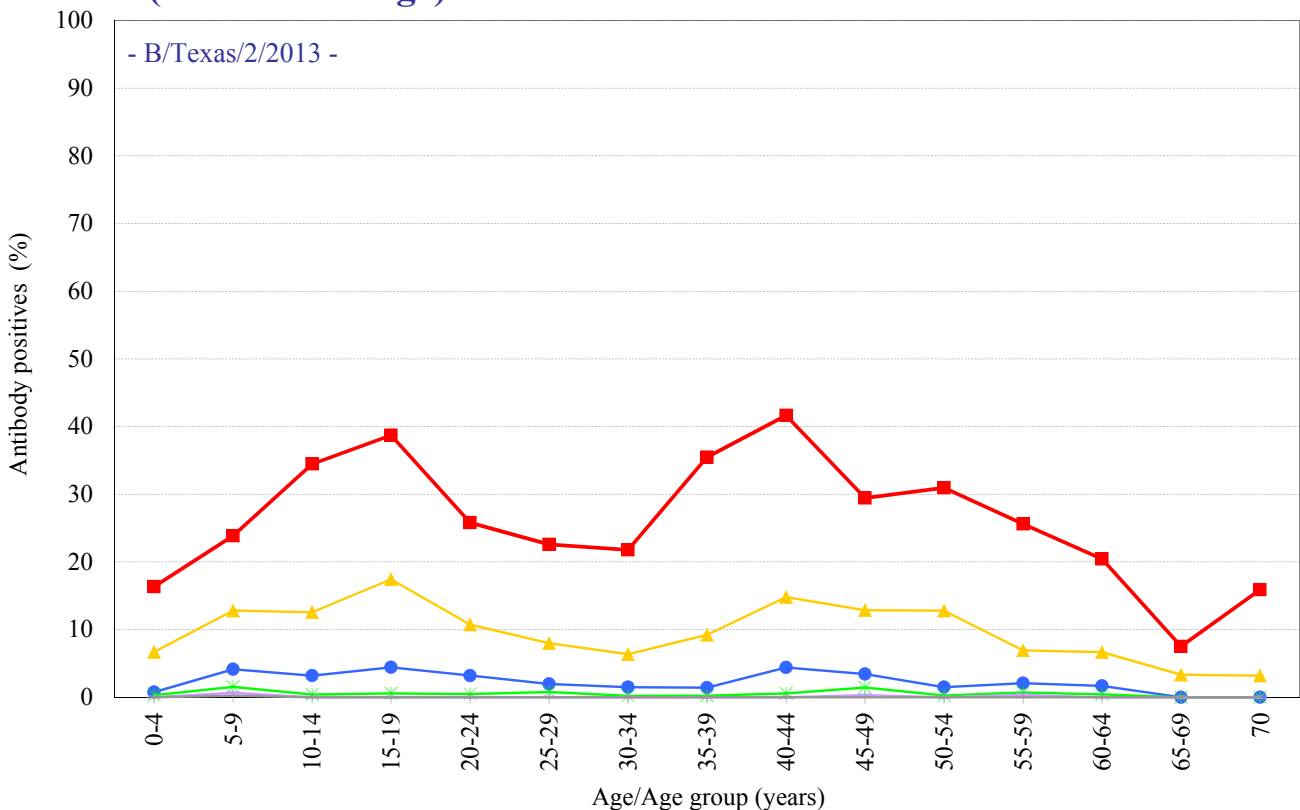
B(Yamagata lineage)

[Examination by hemagglutination inhibition test (HI)/ n = 5,863]



B(Victoria lineage)

[Examination by hemagglutination inhibition test (HI)/ n = 5,863]



HI titer 1:40 1:80 1:160 1:320 1:640 1:1280