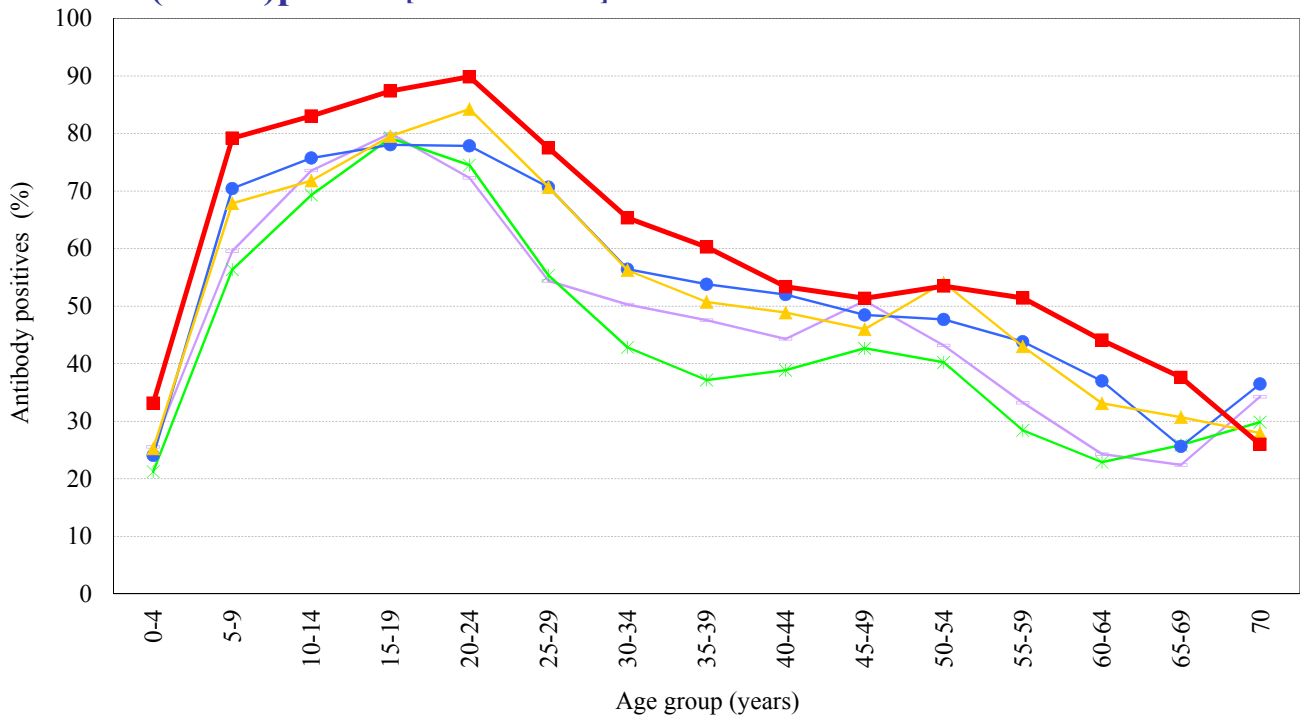


Age distribution of influenza HI antibody positives in Japan, 2012 ~ 2016

- National Epidemiological Surveillance of Vaccine-Preventable Diseases, 2016 -

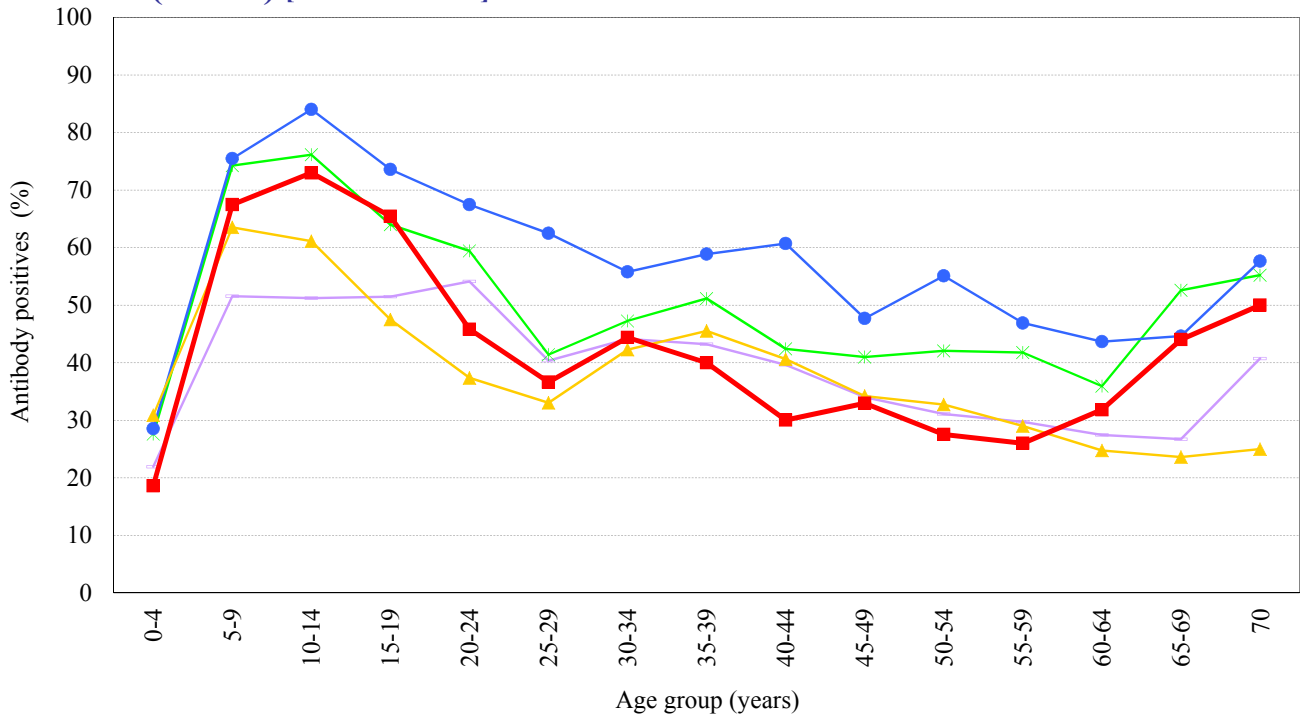
A(H1N1)pdm09 [HI titer 1:40] [Examination by hemagglutination inhibition test (HI)]



Year

- 2012 : A/California/7/2009 (n=6,794)
- 2013 : A/California/7/2009 (n=6,747)
- 2014 : A/California/7/2009 (n=6,804)
- 2015 : A/California/7/2009 (n=6,584)
- 2016 : A/California/7/2009 (n=5,883)

A(H3N2) [HI titer 1:40] [Examination by hemagglutination inhibition test (HI)]



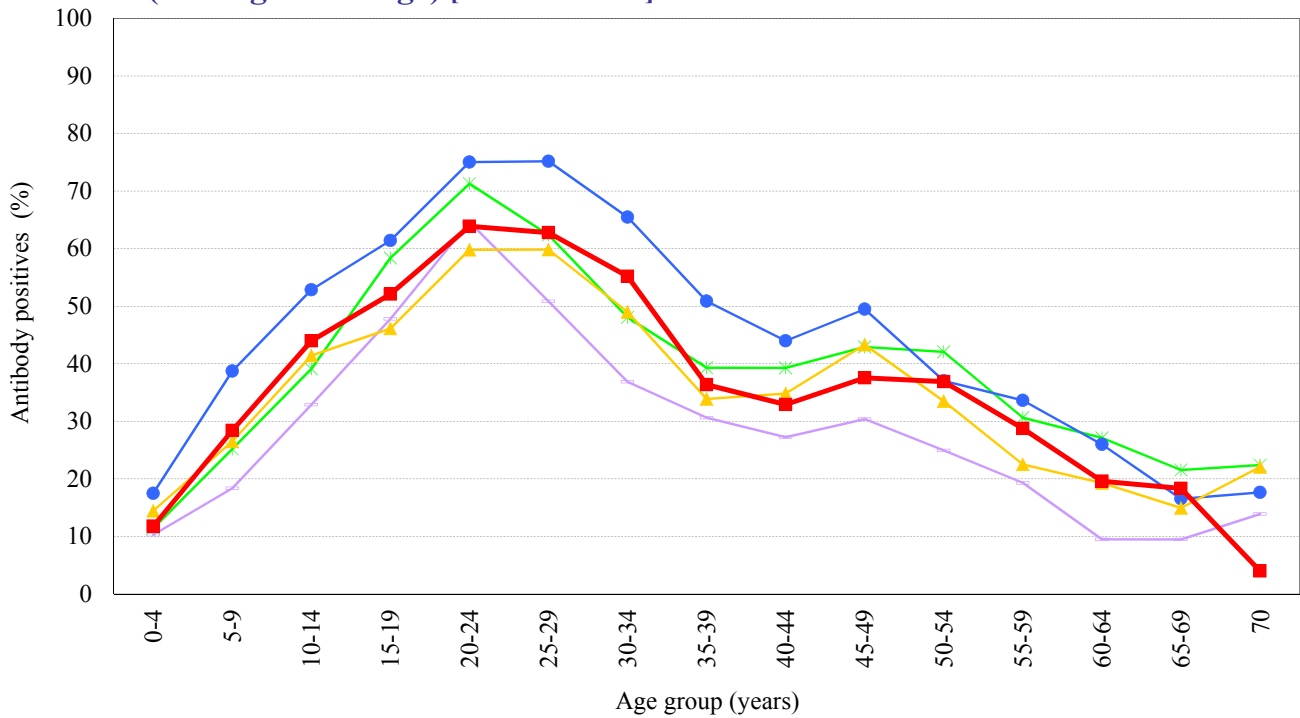
Year

- 2012 : A/Victoria/361/2011 (n=6,794)
- 2013 : A/Texas/50/2012 (n=6,747)
- 2014 : A/New York/39/2012 (n=6,804)
- 2015 : A/Switzerland/9715293/2013 (n=6,583)
- 2016 : A/Hong Kong/4801/2014 (n=5,881)

Age distribution of influenza HI antibody positives in Japan, 2012 ~ 2016

- National Epidemiological Surveillance of Vaccine-Preventable Diseases, 2016 -

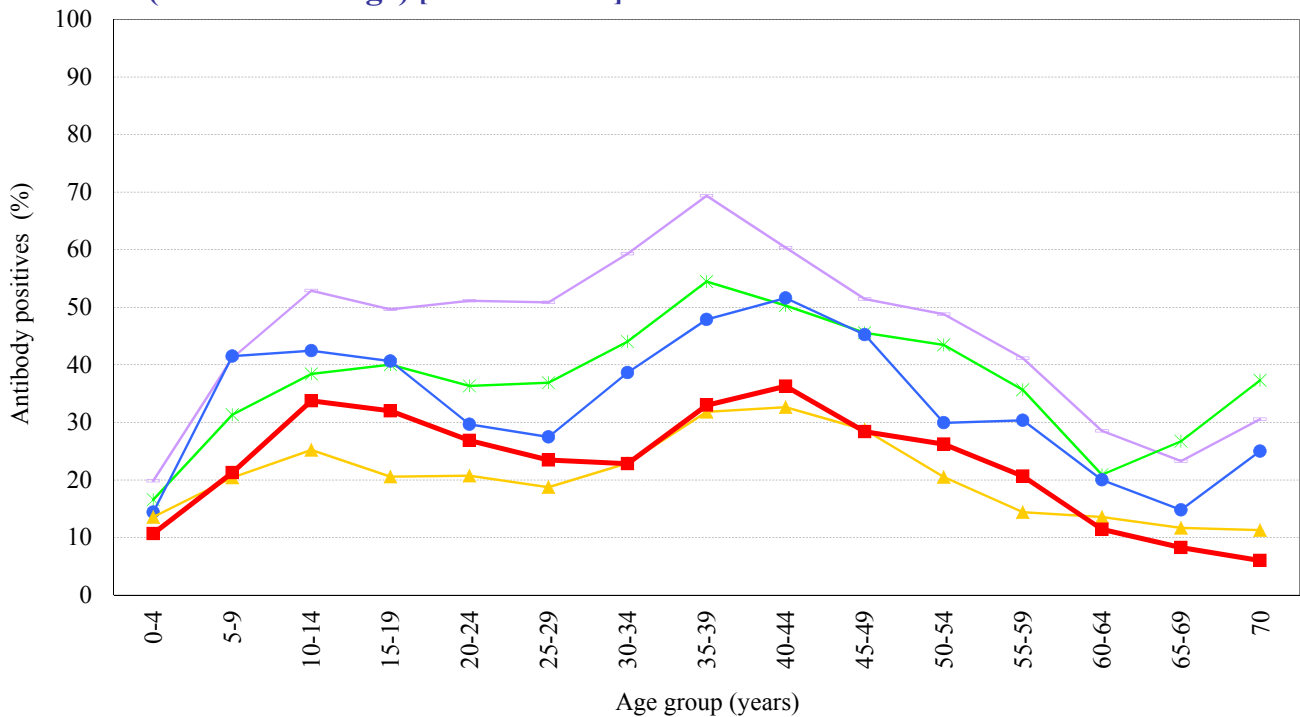
B(Yamagata lineage) [HI titer 1:40] [Examination by hemagglutination inhibition test (HI)]



Year

- 2012 : B/Wisconsin/1/2010 (n=6,793)
- 2013 : B/Massachusetts/02/2012 (n=6,747)
- 2014 : B/Massachusetts/02/2012 (n=6,805)
- 2015 : B/Phuket/3073/2013 (n=6,584)
- 2016 : B/Phuket/3073/2013 (n=5,883)

B(Victoria lineage) [HI titer 1:40] [Examination by hemagglutination inhibition test (HI)]



Year

- 2012 : B/Brisbane/60/2008 (n=6,793)
- 2013 : B/Brisbane/60/2008 (n=6,747)
- 2014 : B/Brisbane/60/2008 (n=6,629)
- 2015 : B/Texas/2/2013 (n=6,408)
- 2016 : B/Texas/2/2013 (n=5,883)