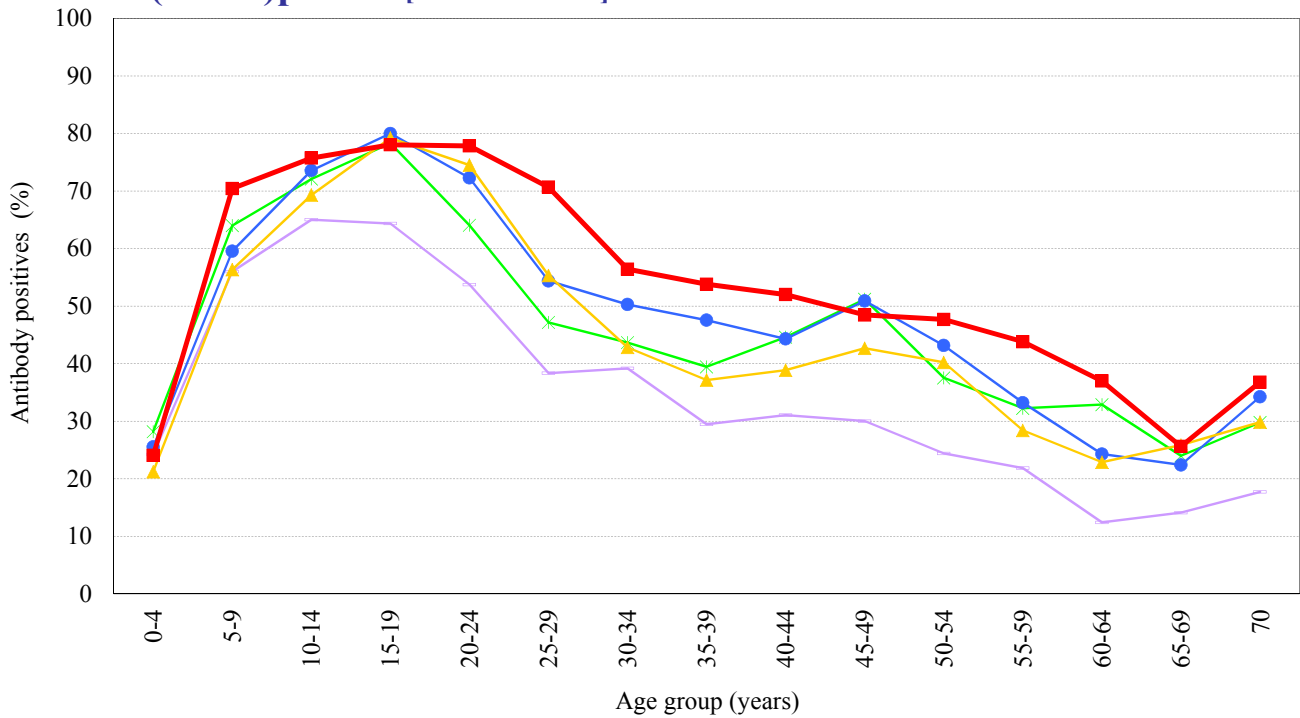


Age distribution of influenza HI antibody positives in Japan, 2010 ~ 2014

- National Epidemiological Surveillance of Vaccine-Preventable Diseases, 2014 -

(As of Mar. 2015)

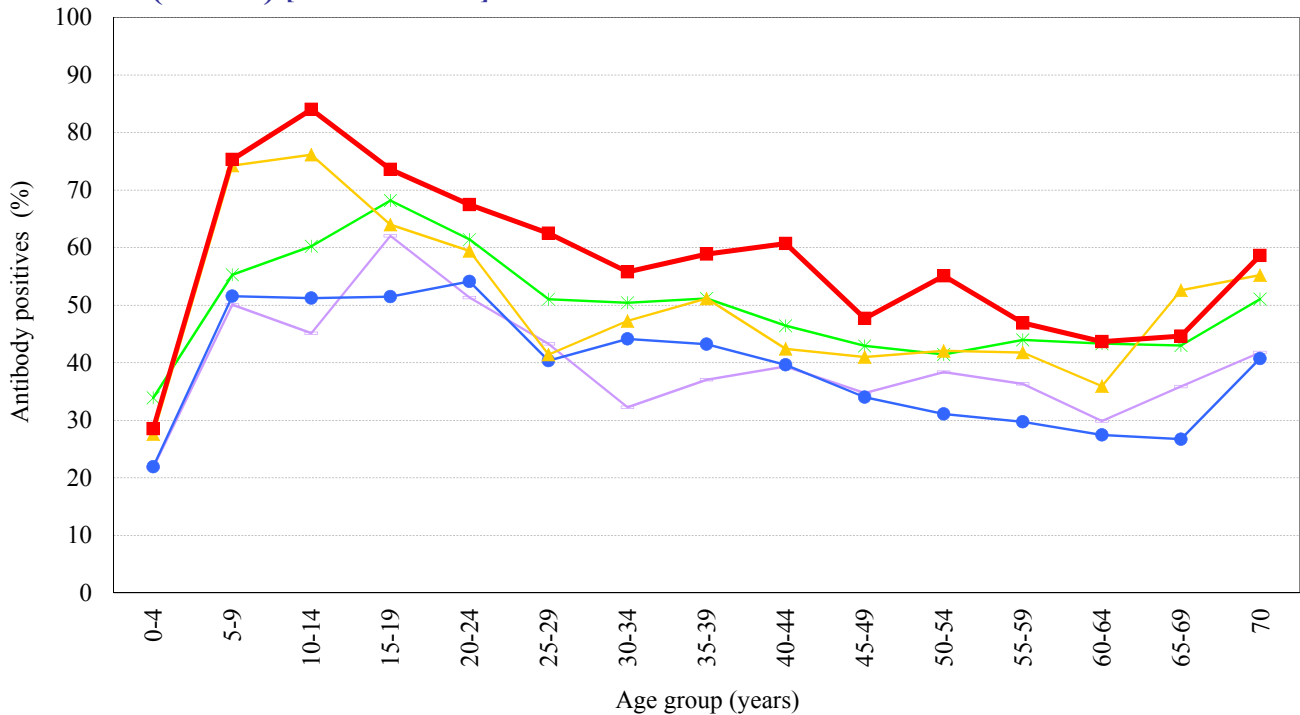
A(H1N1)pdm09 [HI titer 1:40] [Examination by hemagglutination inhibition test (HI)]



Year

- 2010 : A/California/7/2009 (n=6662)
- 2011 : A/California/7/2009 (n=7049)
- 2012 : A/California/7/2009 (n=6794)
- 2013 : A/California/7/2009 (n=6747)
- 2014 : A/California/7/2009 (n=6806)

A(H3N2) [HI titer 1:40] [Examination by hemagglutination inhibition test (HI)]



Year

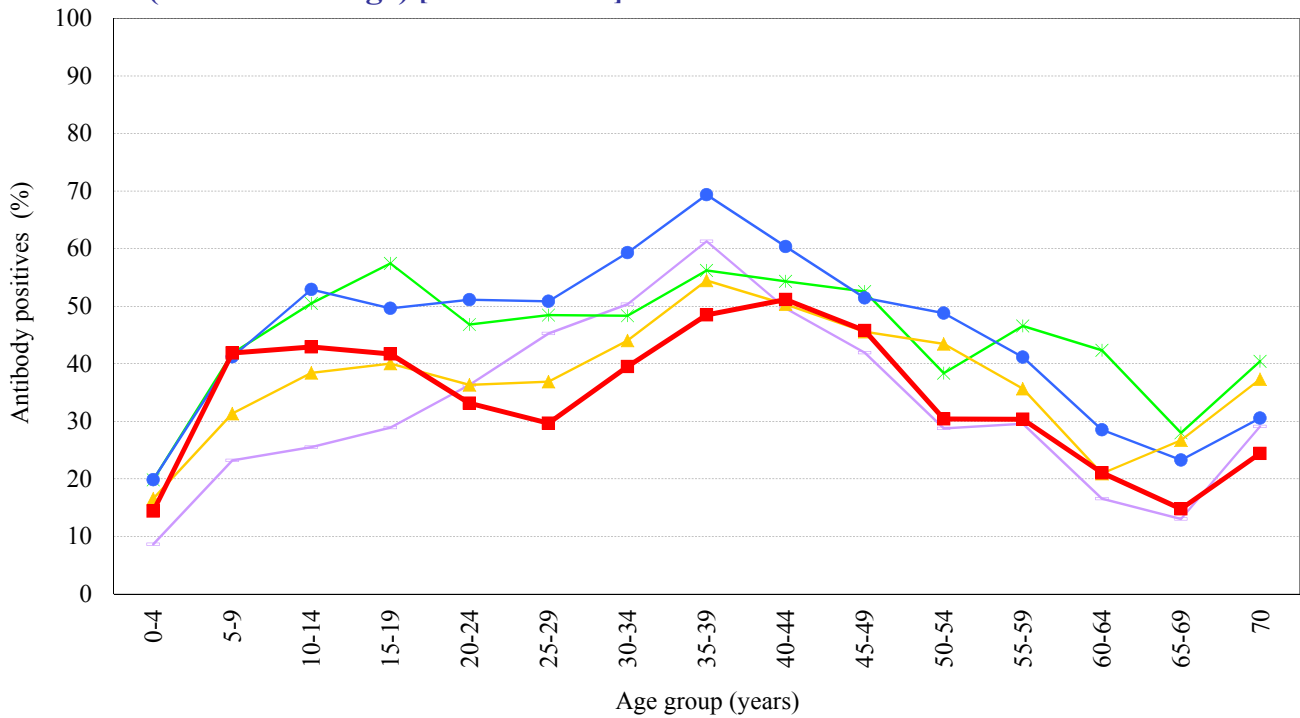
- 2010 : A/Victoria/210/2009 (n=6662)
- 2011 : A/Victoria/210/2009 (n=7048)
- 2012 : A/Victoria/361/2011 (n=6794)
- 2013 : A/Texas/50/2012 (n=6747)
- 2014 : A/New York/39/2012 (n=6806)

Age distribution of influenza HI antibody positives in Japan, 2010 ~ 2014

- National Epidemiological Surveillance of Vaccine-Preventable Diseases, 2014 -

(As of Mar. 2015)

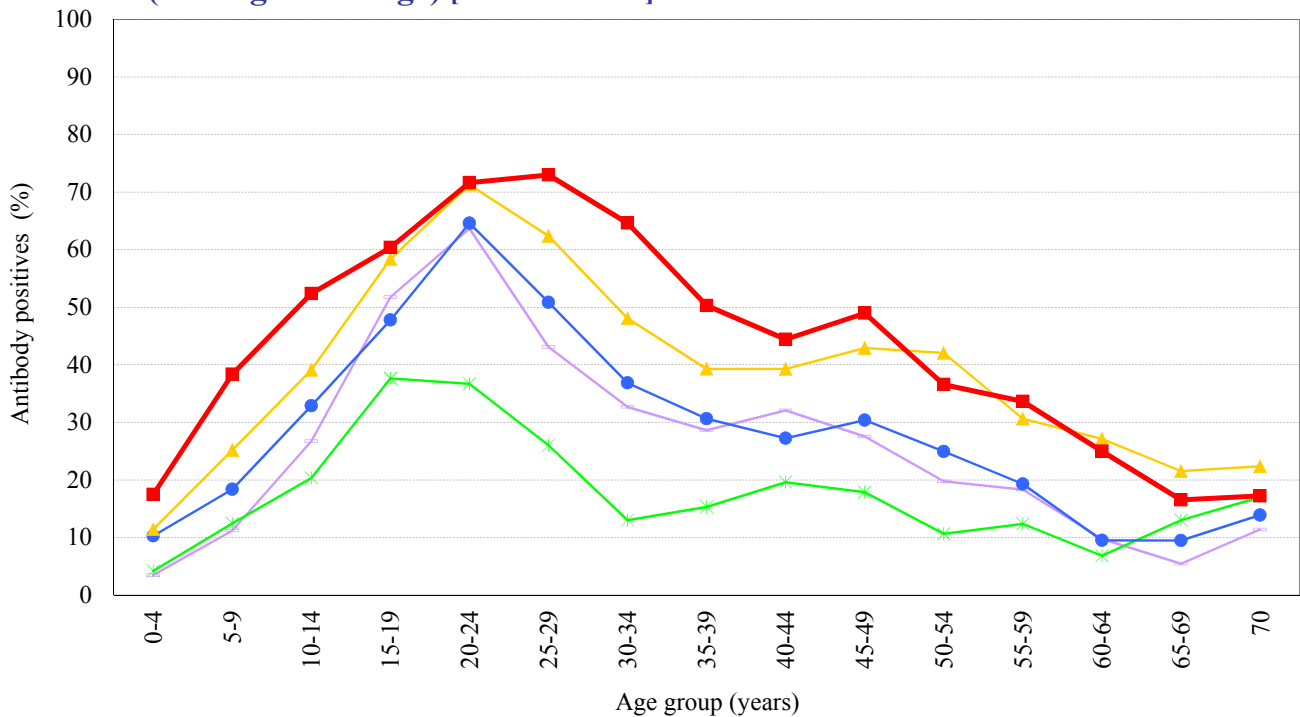
B(Victoria lineage) [HI titer 1:40] [Examination by hemagglutination inhibition test (HI)]



Year

- 2010 : B/Brisbane/60/2008 (n=6662)
- 2011 : B/Brisbane/60/2008 (n=7049)
- 2012 : B/Brisbane/60/2008 (n=6793)
- 2013 : B/Brisbane/60/2008 (n=6747)
- 2014 : B/Brisbane/60/2008 (n=6631)

B(Yamagata lineage) [HI titer 1:40] [Examination by hemagglutination inhibition test (HI)]



Year

- 2010 : B/Florida/4/2006 (n=6661)
- 2011 : B/Wisconsin/1/2010 (n=7049)
- 2012 : B/Wisconsin/1/2010 (n=6793)
- 2013 : B/Massachusetts/02/2012 (n=6747)
- 2014 : B/Massachusetts/02/2012 (n=6807)