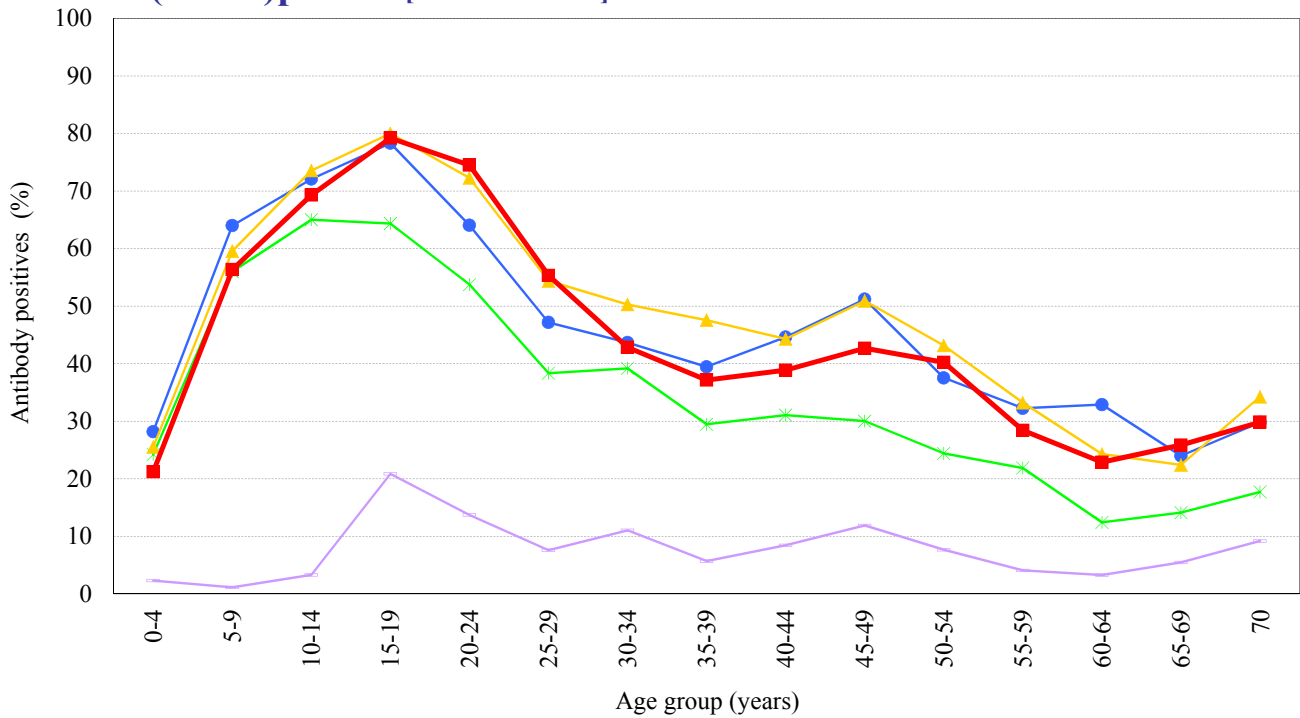


# Age distribution of influenza HI antibody positives in Japan, 2009 ~ 2013

- National Epidemiological Surveillance of Vaccine-Preventable Diseases, 2013 -

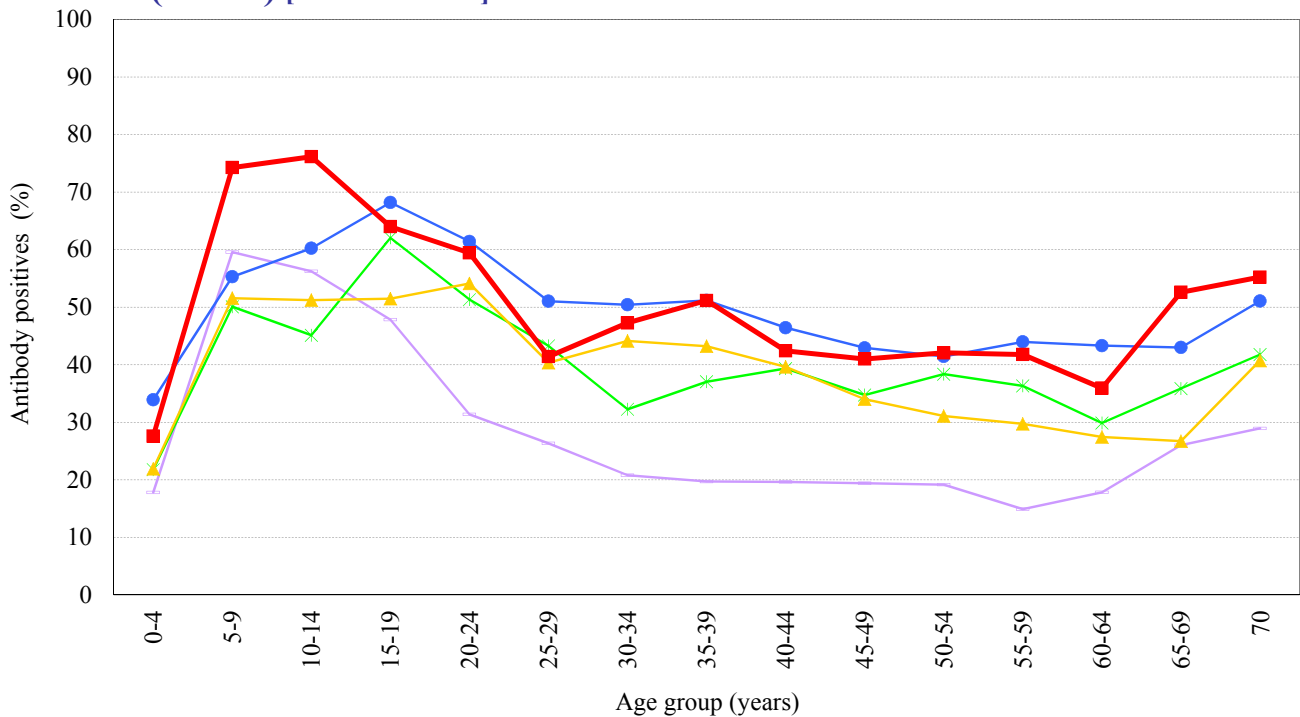
## A(H1N1)pdm09 [HI titer 1:40] [ Examination by hemagglutination inhibition test (HI) ]



Year

- 2009 : A/California/7/2009 ( n=6539 )
- 2010 : A/California/7/2009 ( n=6662 )
- 2011 : A/California/7/2009 ( n=7049 )
- 2012 : A/California/7/2009 ( n=6794 )
- 2013 : A/California/7/2009 ( n=6747 )

## A(H3N2) [HI titer 1:40] [ Examination by hemagglutination inhibition test (HI) ]



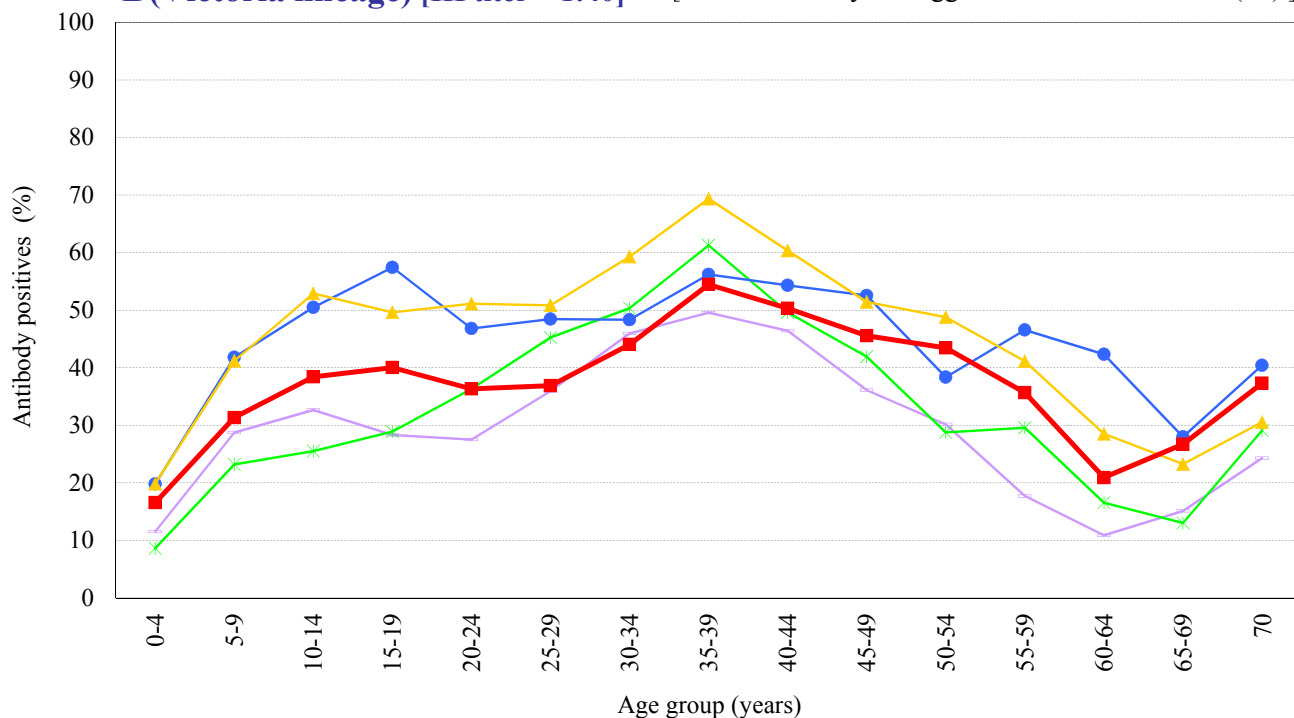
Year

- 2009 : A/Uruguay/716/2007 ( n=6539 )
- 2010 : A/Victoria/210/2009 ( n=6662 )
- 2011 : A/Victoria/210/2009 ( n=7048 )
- 2012 : A/Victoria/361/2011 ( n=6794 )
- 2013 : A/Texas/50/2012 ( n=6747 )

# Age distribution of influenza HI antibody positives in Japan, 2009 ~ 2013

- National Epidemiological Surveillance of Vaccine-Preventable Diseases, 2013 -

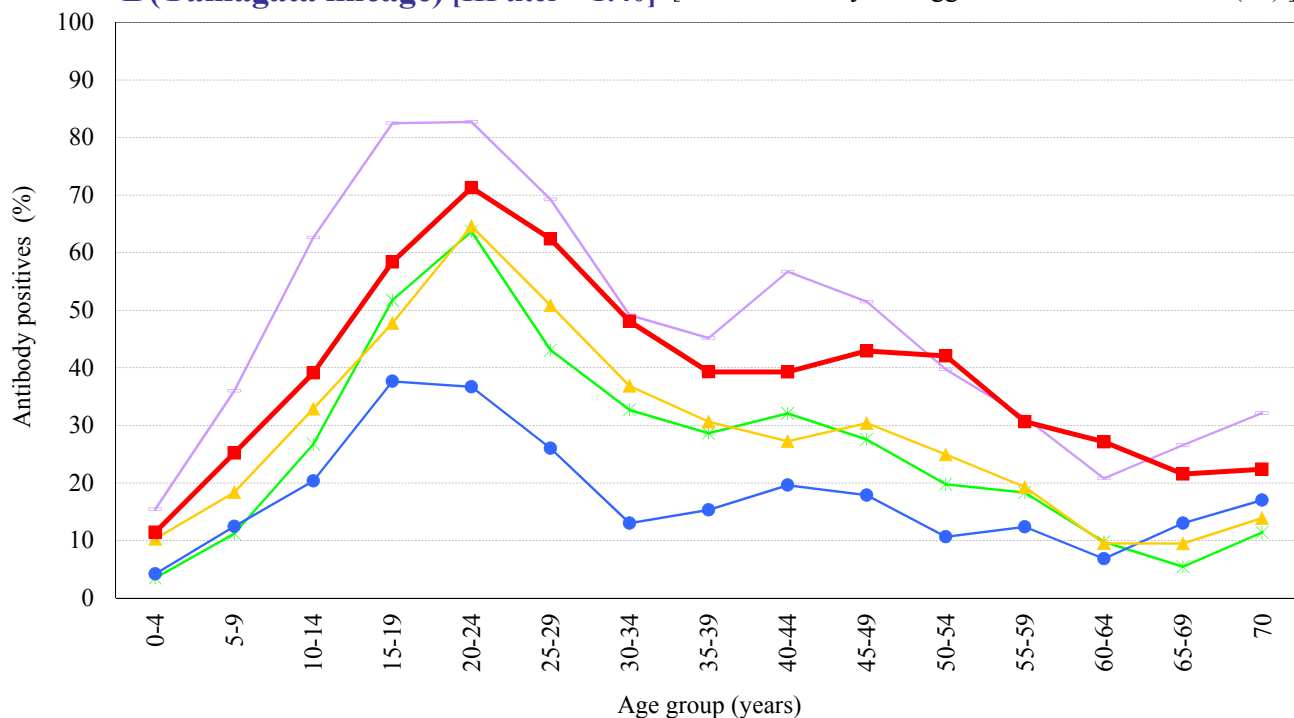
## B(Victoria lineage) [HI titer 1:40] [ Examination by hemagglutination inhibition test (HI) ]



Year

- 2009 : B/Brisbane/60/2008 ( n=6301 )
- 2010 : B/Brisbane/60/2008 ( n=6662 )
- 2011 : B/Brisbane/60/2008 ( n=7049 )
- 2012 : B/Brisbane/60/2008 ( n=6793 )
- 2013 : B/Brisbane/60/2008 ( n=6747 )

## B(Yamagata lineage) [HI titer 1:40] [ Examination by hemagglutination inhibition test (HI) ]



Year

- 2009 : B/Florida/4/2006 ( n=6293 )
- 2010 : B/Florida/4/2006 ( n=6661 )
- 2011 : B/Wisconsin/1/2010 ( n=7049 )
- 2012 : B/Wisconsin/1/2010 ( n=6793 )
- 2013 : B/Massachusetts/02/2012 ( n=6747 )