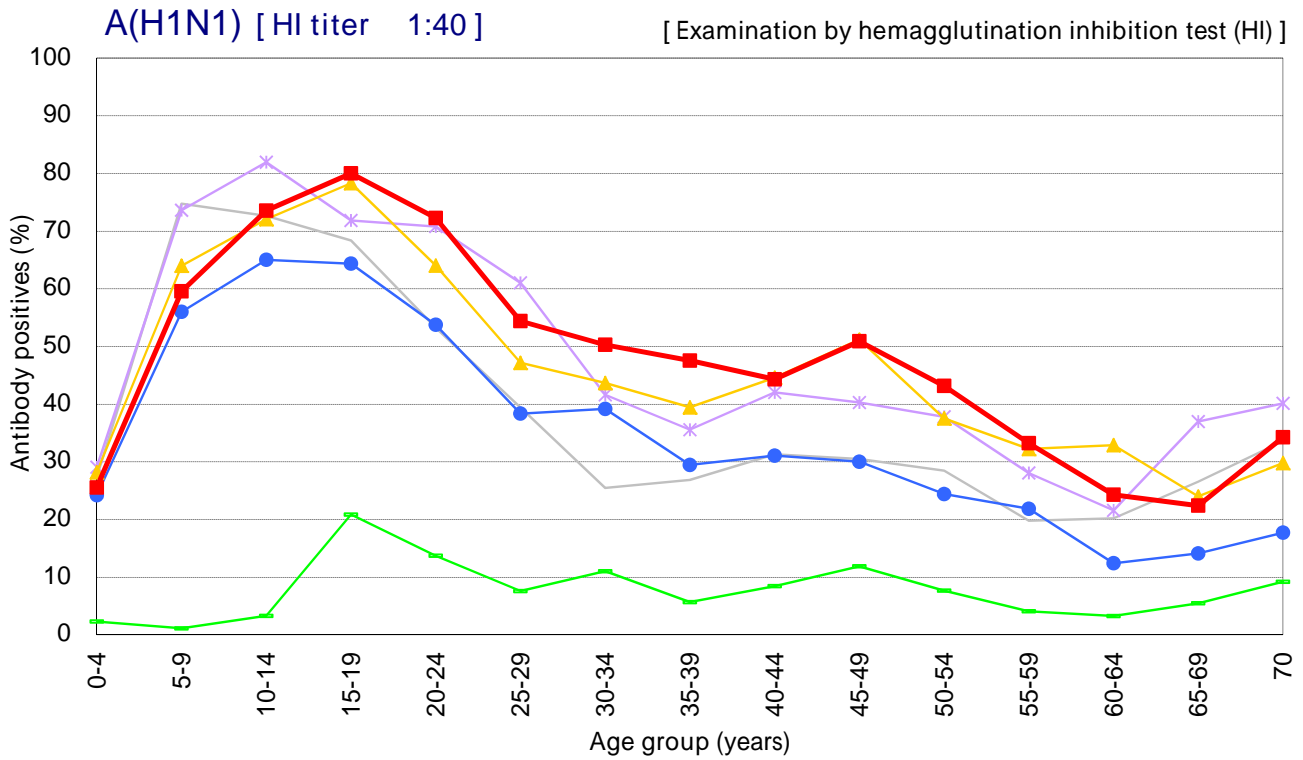


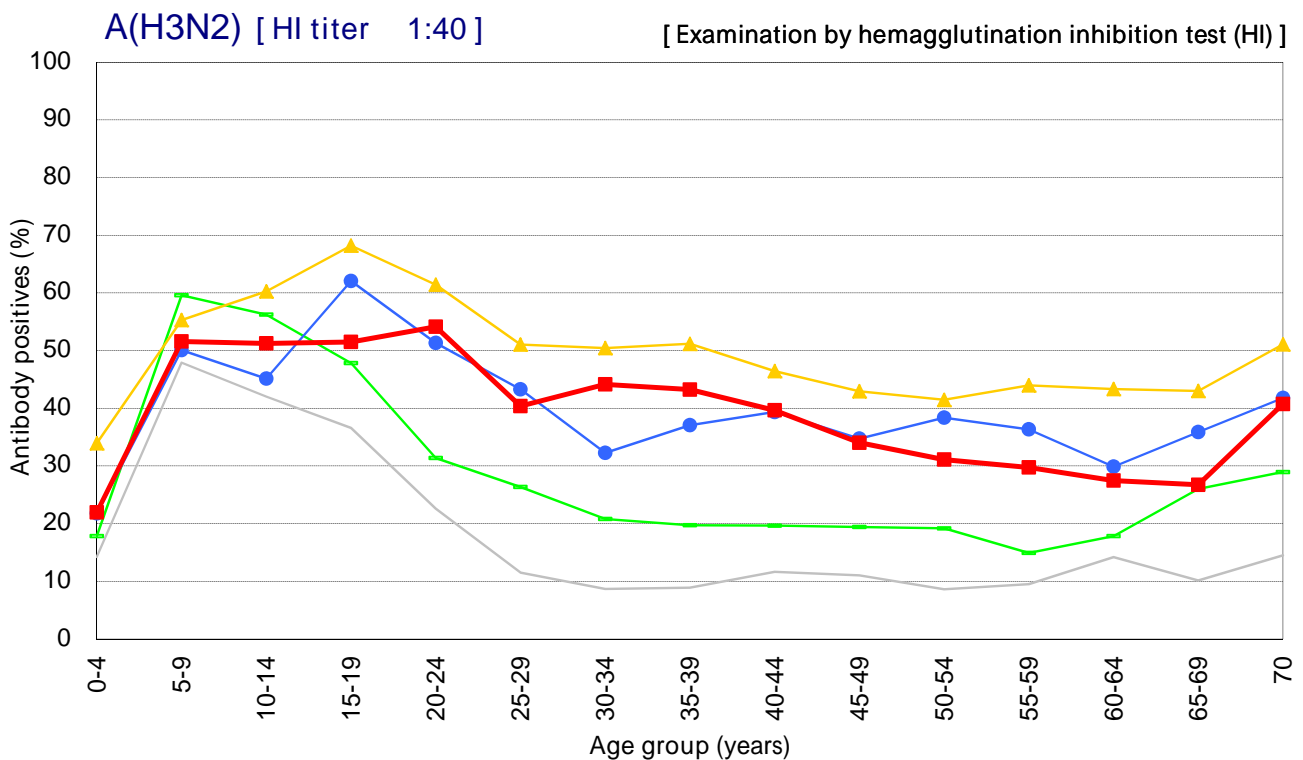
Age distribution of influenza HI antibody positives in Japan, 2008 ~ 2012

- National Epidemiological Surveillance of Vaccine-Preventable Diseases, 2012 -



Year : Virus strain for examination

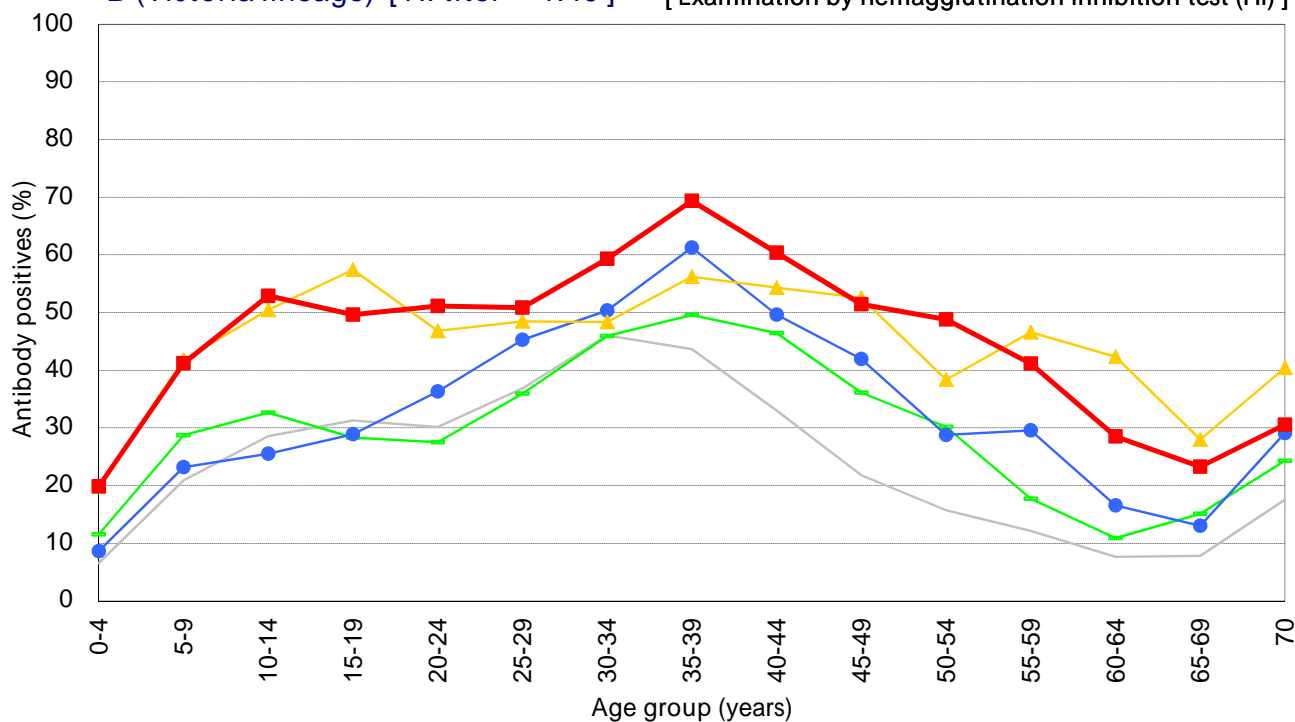
- 2008 : A/ブリスベン/59/2007 [n=6679]
- 2009 : A/カリフォルニア/7/2009(H1N1)pdm09 [n=6539]
- 2010 : A/カリフォルニア/7/2009(H1N1)pdm09 [n=6662]
- 2011 : A/カリフォルニア/7/2009(H1N1)pdm09 [n=7049]
- 2012 : A/カリフォルニア/7/2009(H1N1)pdm09 [n=6794]



Year : Virus strain for examination

- 2008 : A/Uruguay/716/2007 [n=6679]
- 2009 : A/Uruguay/716/2007 [n=6539]
- 2010 : A/Victoria/210/2009 [n=6662]
- 2011 : A/Victoria/210/2009 [n=7048]
- 2012 : A/Victoria/361/2011 [n=6794]

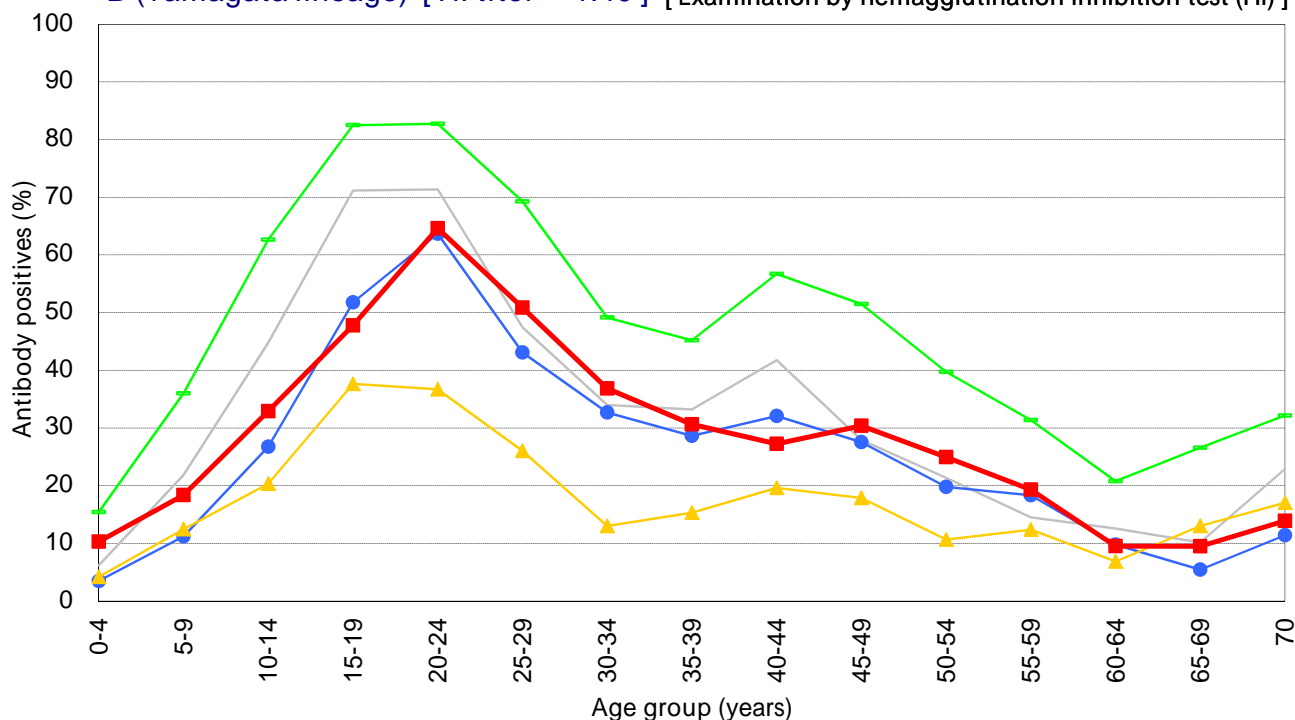
B (Victoria lineage) [HI titer 1:40] [Examination by hemagglutination inhibition test (HI)]



Year : Virus strain for examination

- 2008 : B/Malaysia/2506/2004 [n=6679]
- 2009 : B/Brisbane/60/2008 [n=6301]
- 2010 : B/Brisbane/60/2008 [n=6662]
- 2011 : B/Brisbane/60/2008 [n=7049]
- 2012 : B/Brisbane/60/2008 [n=6793]

B (Yamagata lineage) [HI titer 1:40] [Examination by hemagglutination inhibition test (HI)]



Year : Virus strain for examination

- 2008 : B/Florida/4/2006 [n=6679]
- 2009 : B/Florida/4/2006 [n=6293]
- 2010 : B/Florida/4/2006 [n=6661]
- 2011 : B/Wisconsin/1/2010 [n=7049]
- 2012 : B/Wisconsin/1/2010 [n=6793]