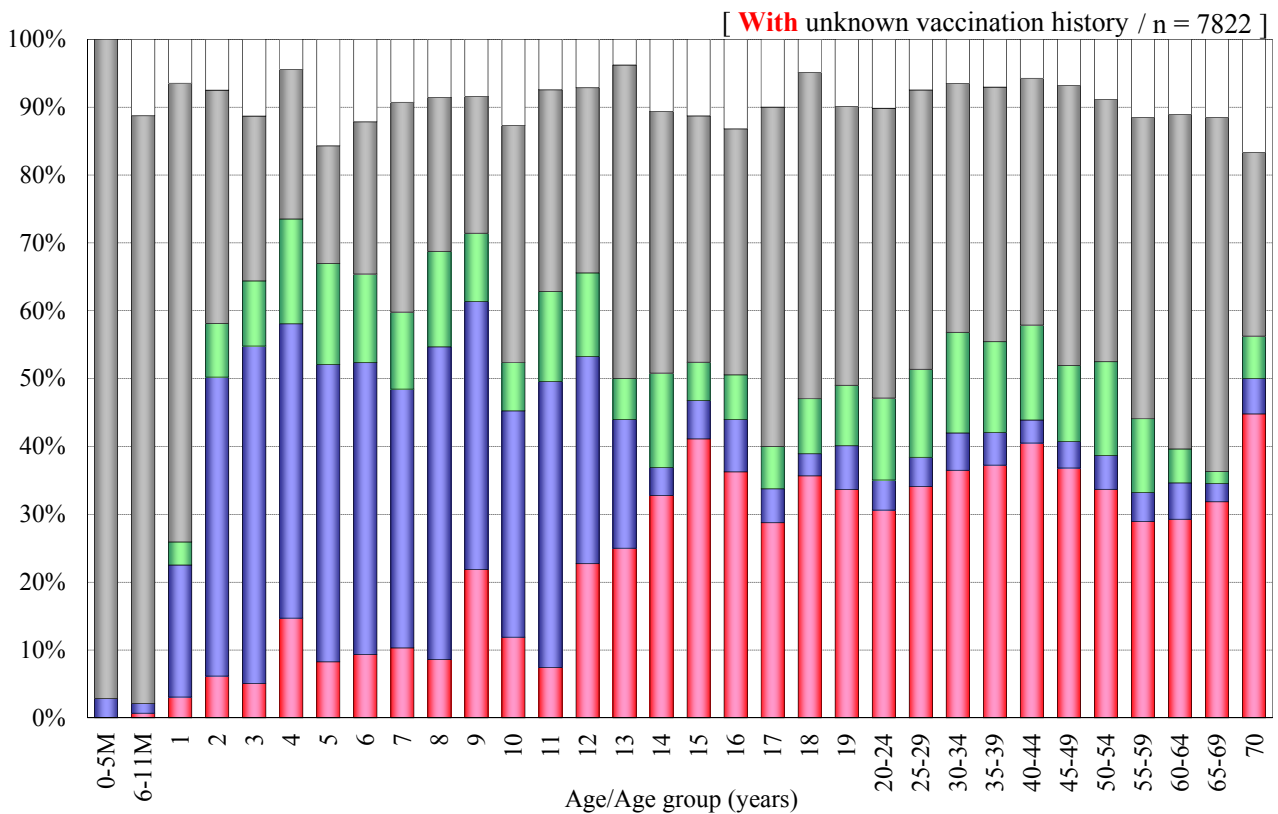
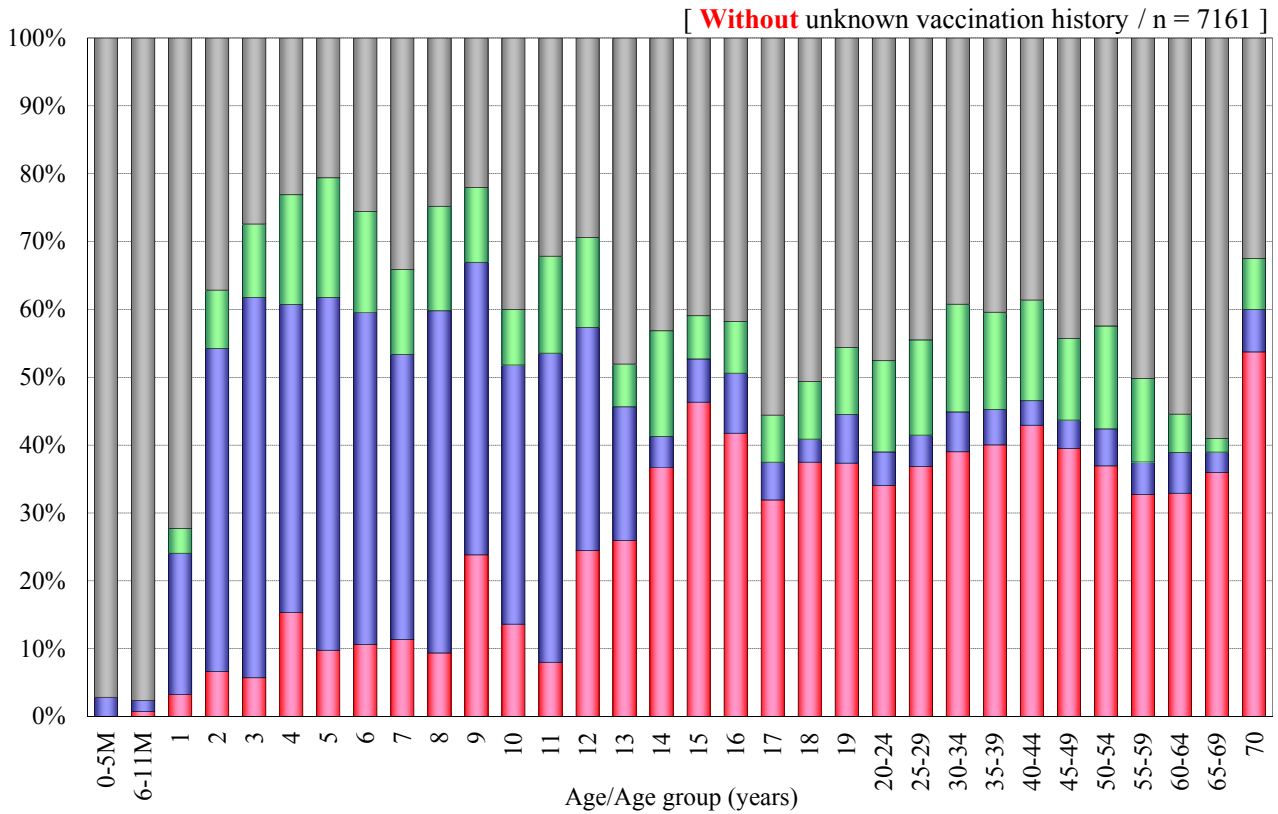


# Age distribution of influenza vaccination history in Japan, 2011/12 season

- National Epidemiological Surveillance of Vaccine-Preventable Diseases, 2012 -



■ 1 dose [n=2203]    
 ■ 2 doses [n=977]    
 ■ Unknown doses [n=858]    
 ■ Non-vaccinee [n=3123]    
 ■ Unknown vaccination history [n=661]