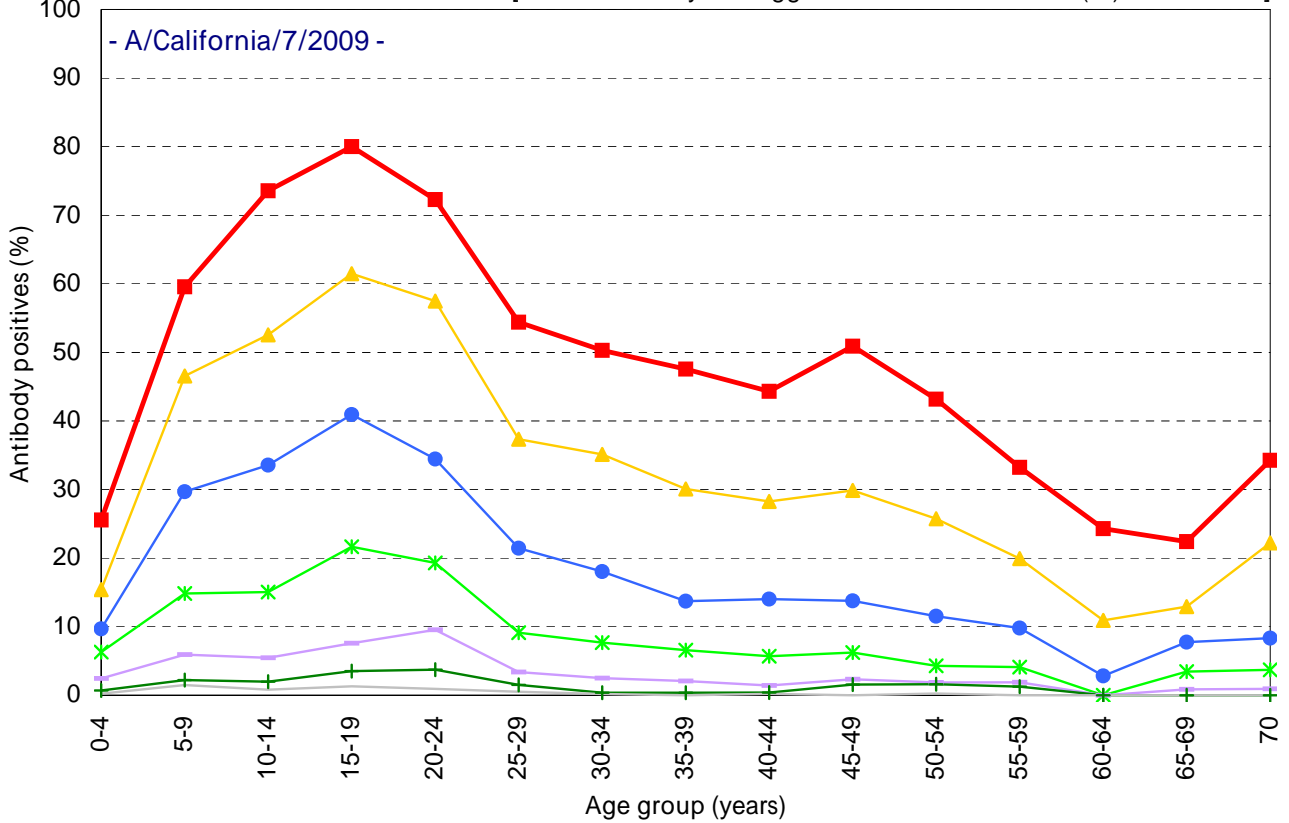


# Age distribution of influenza HI antibody positives before 2012/13 season in Japan

- National Epidemiological Surveillance of Vaccine-Preventable Diseases, 2012 -

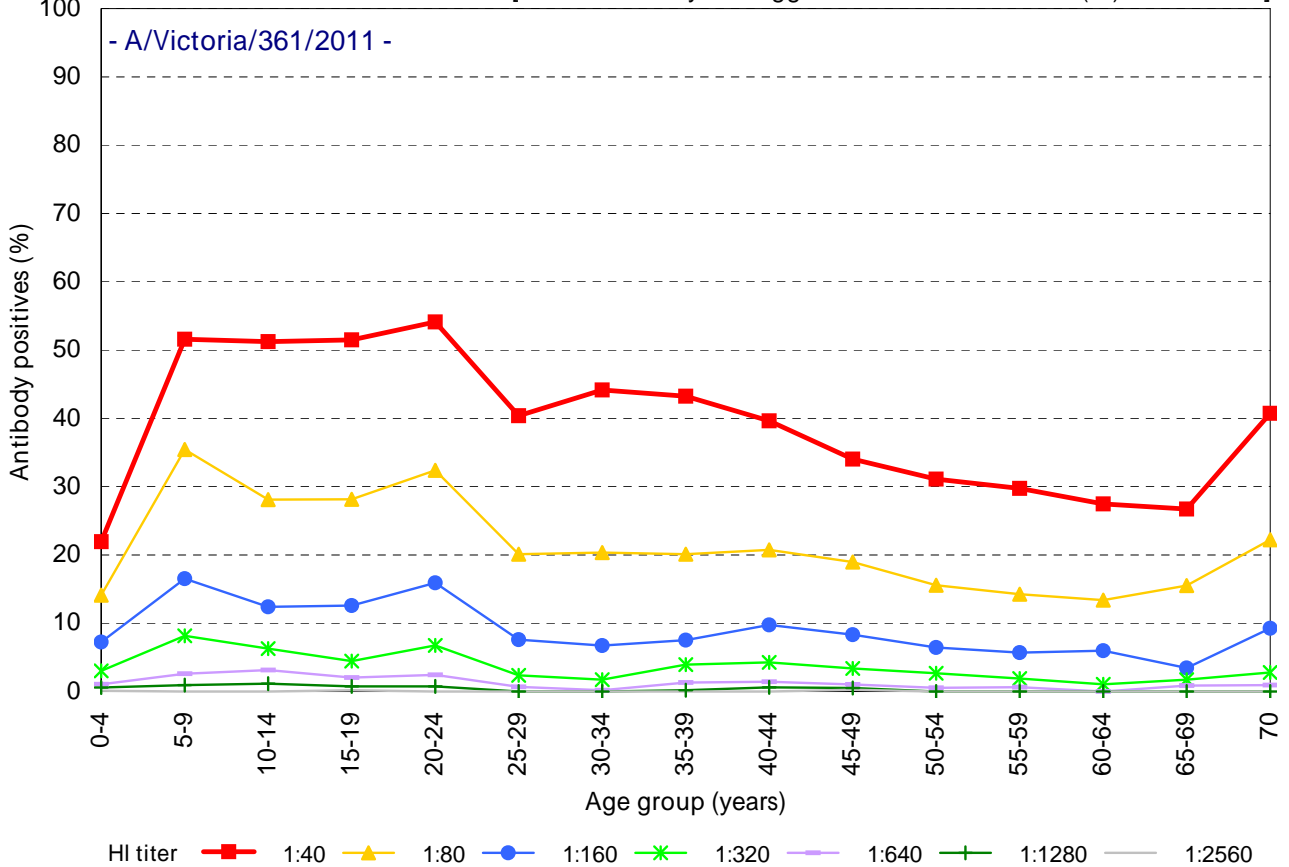
## A(H1N1)pdm09

[ Examination by hemagglutination inhibition test (HI) / n = 6794 ]



## A(H3N2)

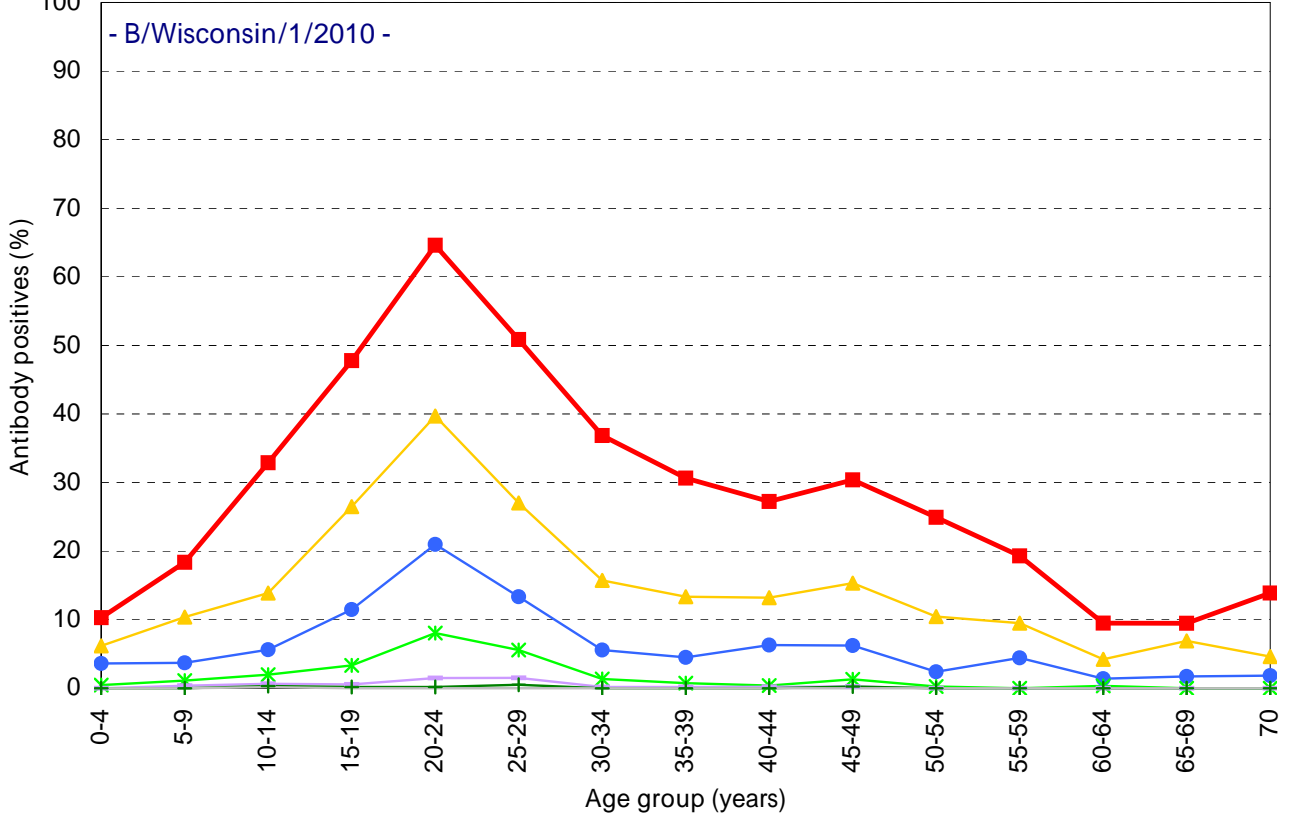
[ Examination by hemagglutination inhibition test (HI) / n = 6794 ]



HI titer    1:40    1:80    1:160    1:320    1:640    1:1280    1:2560

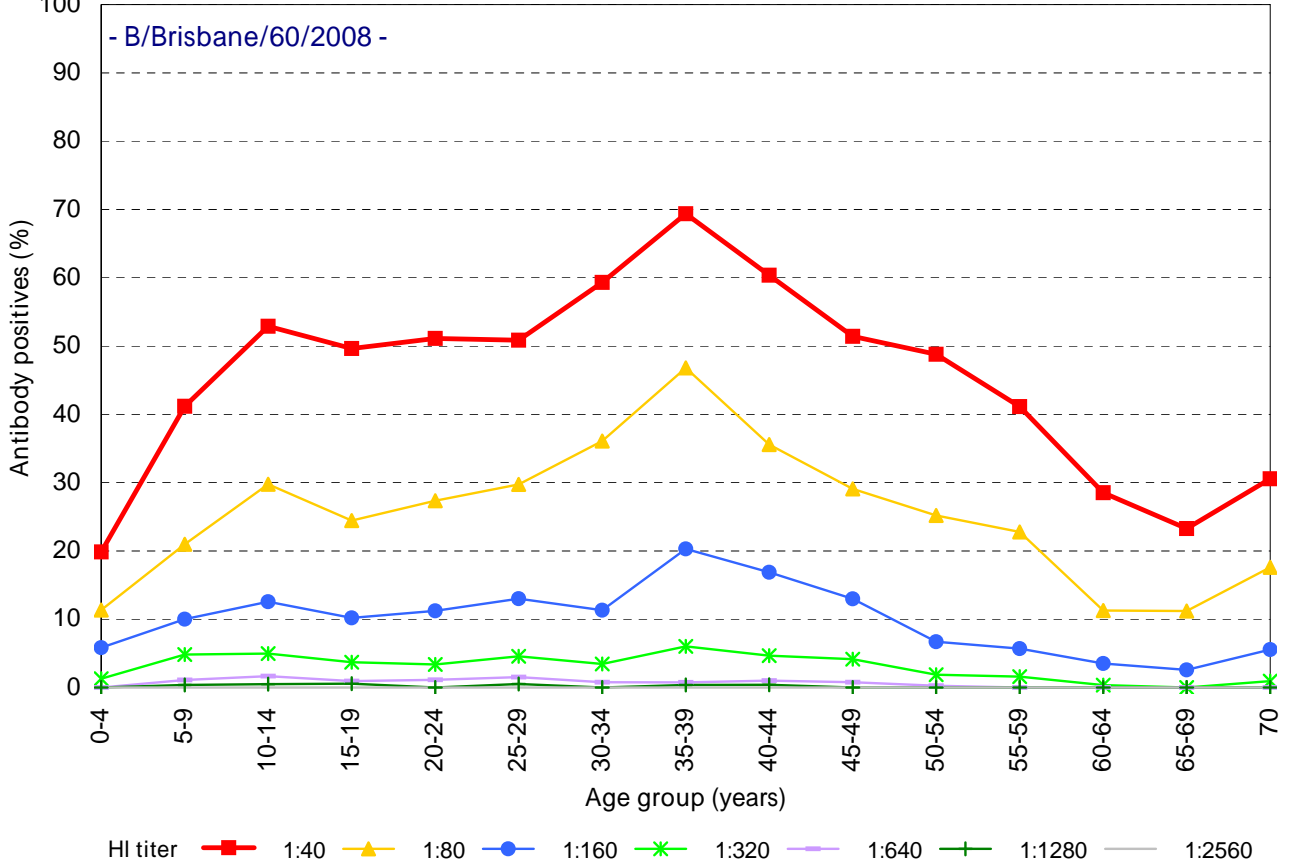
### B (Yamagata lineage)

[ Examination by hemagglutination inhibition test (HI) / n = 6793 ]



### B (Victoria lineage)

[ Examination by hemagglutination inhibition test (HI) / n = 6793 ]



HI titer    1:40    1:80    1:160    1:320    1:640    1:1280    1:2560