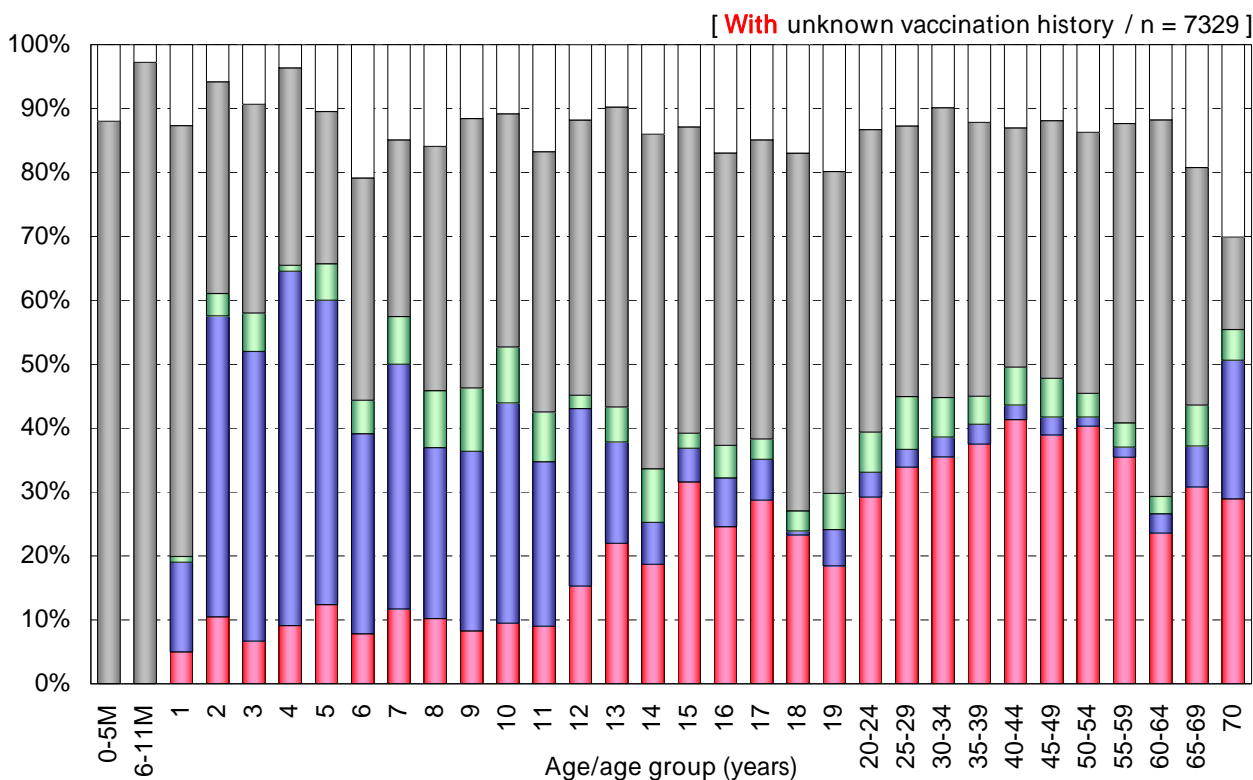
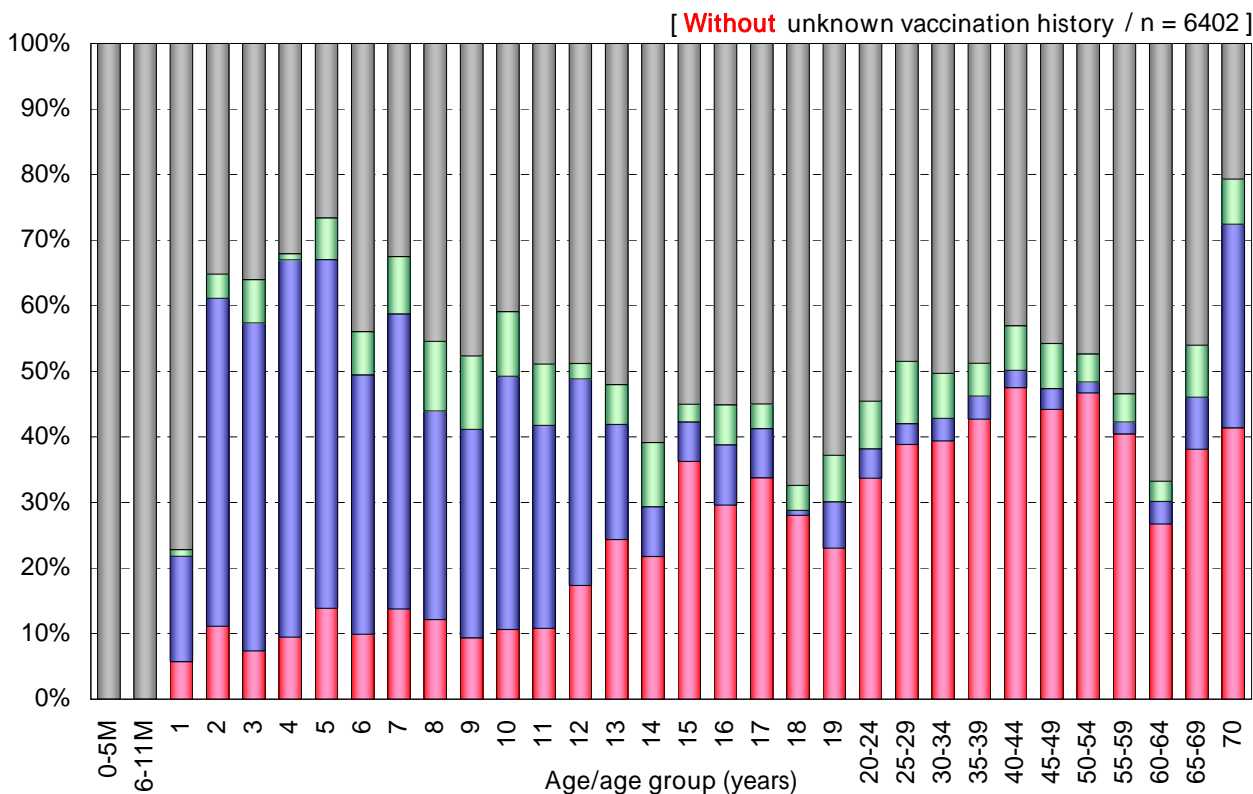


# Age distribution of influenza vaccination history in Japan, 2009/10 season

- National Epidemiological Surveillance of Vaccine-Preventable Diseases, 2010 -



Vaccination history

- 1 dose [n=1966]
- 2 doses [n=783]
- Unknown doses [n=388]
- Non-vaccinee [n=3265]
- Unknown vaccination history [n=927]