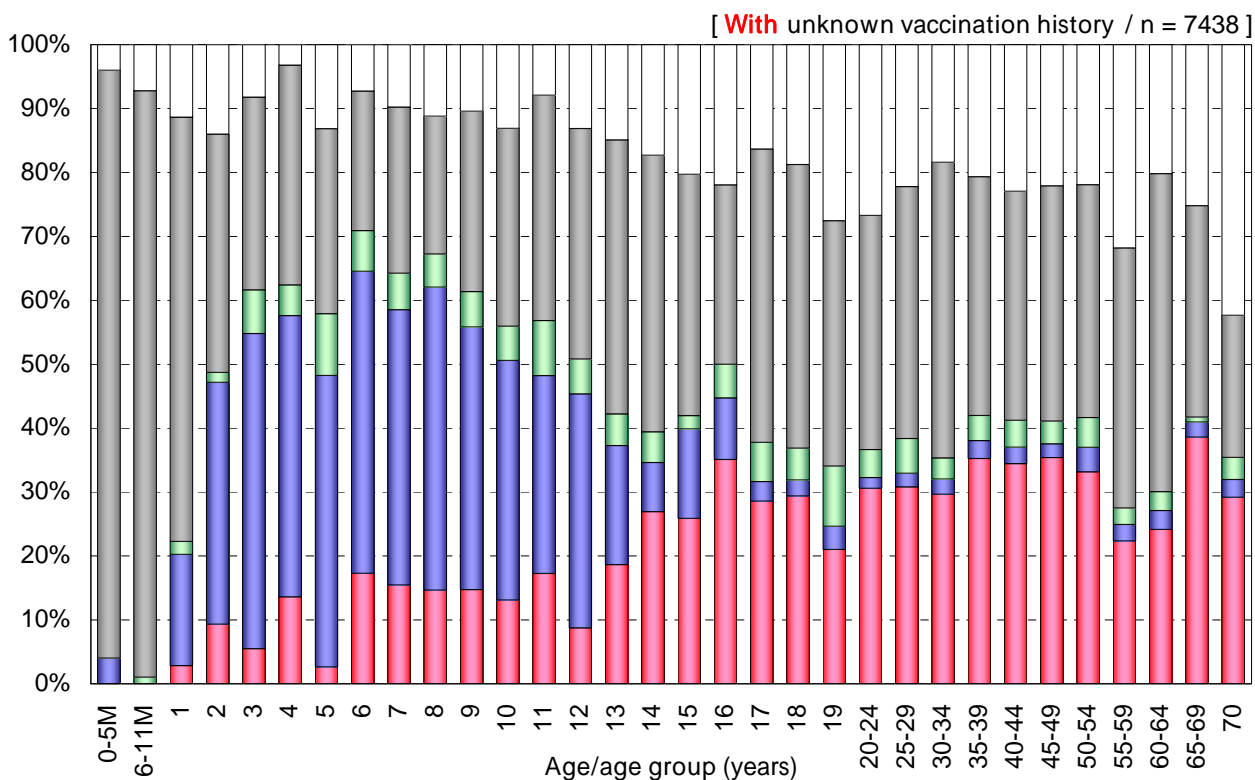
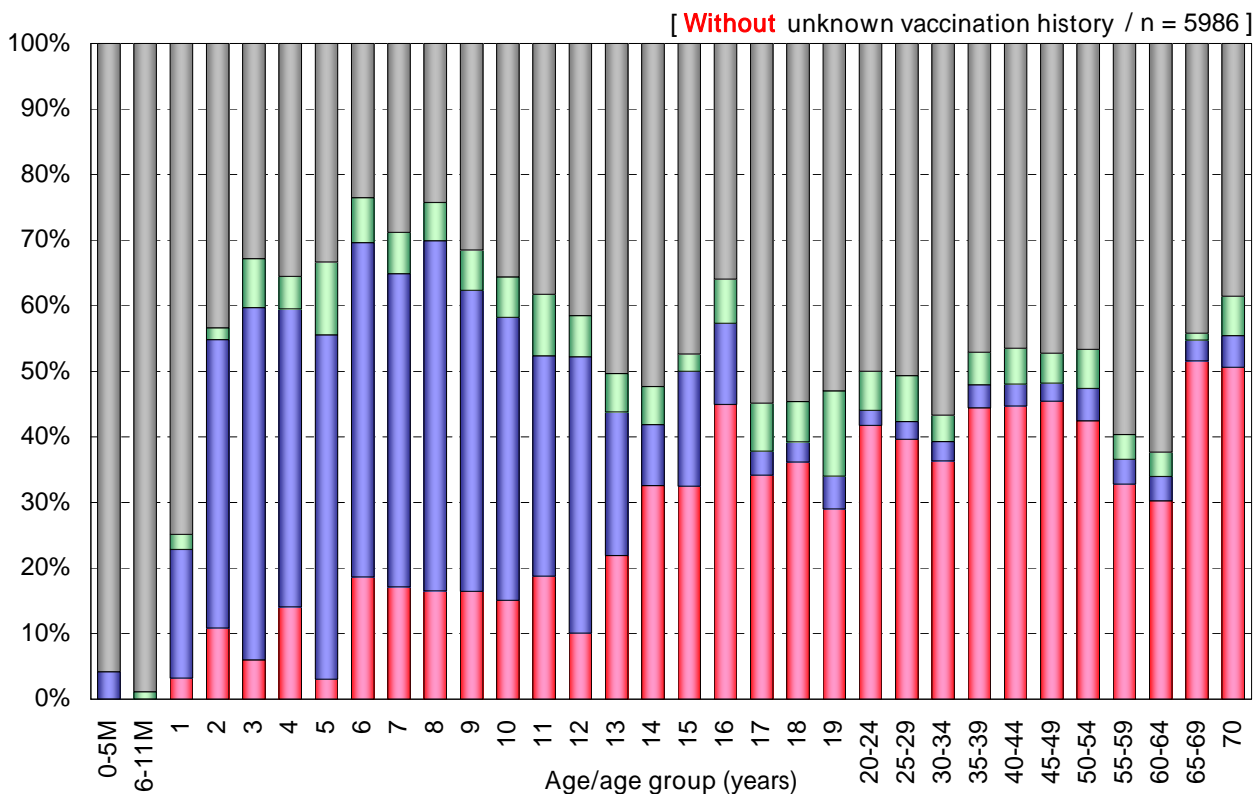


Age distribution of influenza vaccination history in Japan, 2008/09 season

- National Epidemiological Surveillance of Vaccine-Preventable Diseases, 2009 -



Vaccination history

- 1 dose [n=1867]
- 2 doses [n=890]
- Unknown doses [n=324]
- Non-vaccinee [n=2905]
- Unknown vaccination history [n=1452]