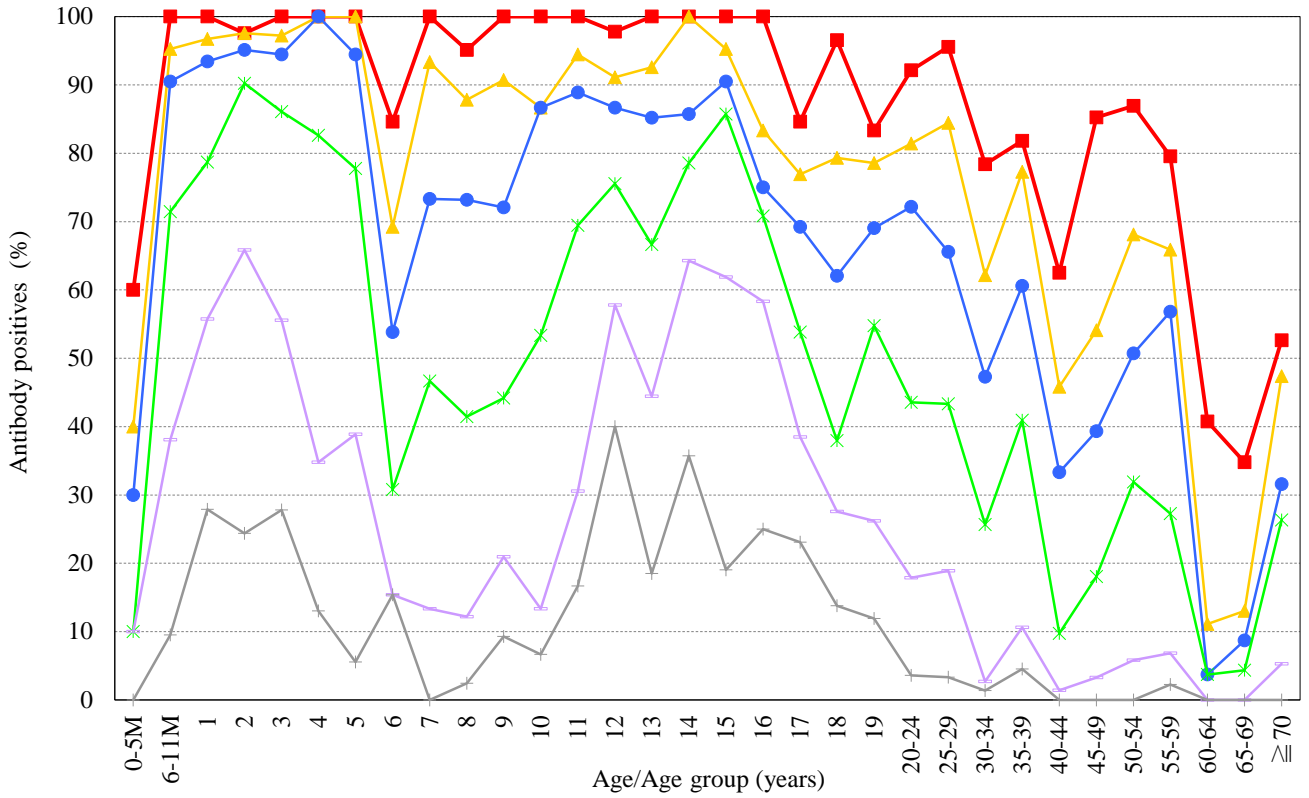


# Age distribution of diphtheria antibody positives in Japan, 2018

— National Epidemiological Surveillance of Vaccine-Preventable Diseases, 2018 —

( As of May 2019 )

[ Examination by micro cell culture method / n = 1,273 ]



Antibody titer    ■  $\geq 0.01$     ▲  $\geq 0.032$     ●  $\geq 0.1$     ✱  $\geq 0.32$     +  $\geq 1$     +  $\geq 3.2$     (IU/mL)

**NESVPD2018**