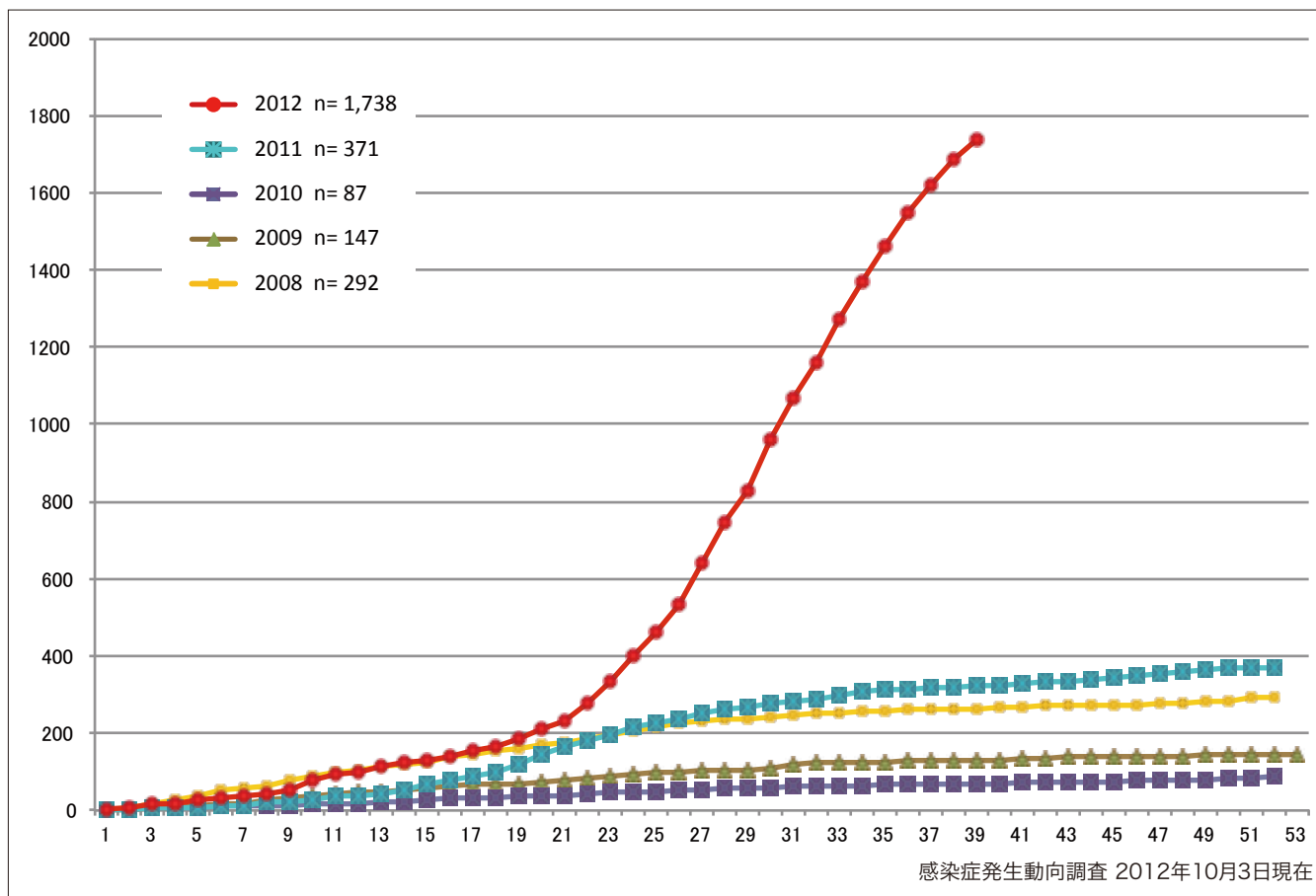


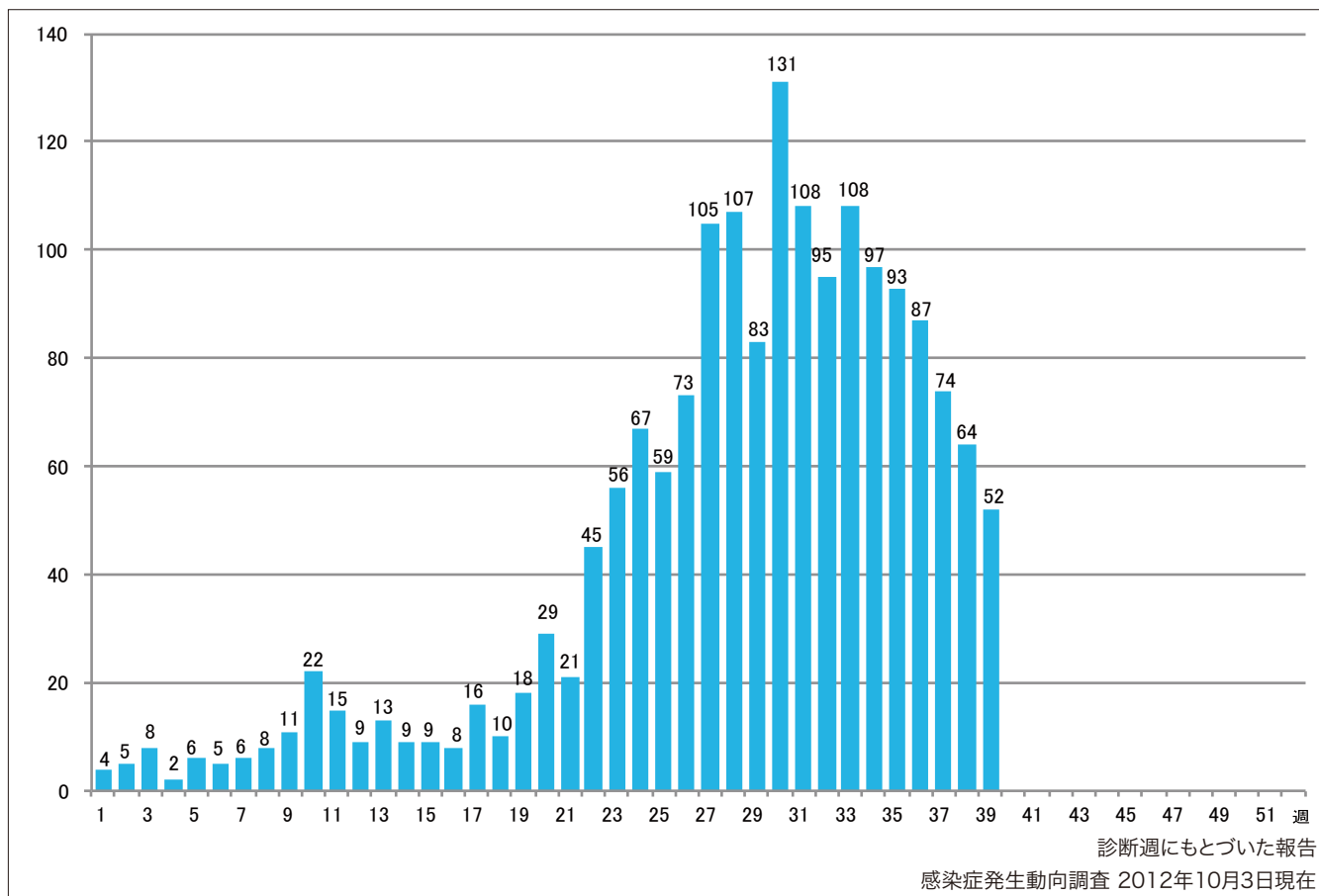
1. 風しん累積報告数の推移2008～2012年（第1～39週）

Cumulative number of rubella cases by week, 2008-2012 (week1-39)
 (based on diagnosed week as of October 3, 2012).



2. 週別風しん報告数 2012年 第1～39週（n=1,738）

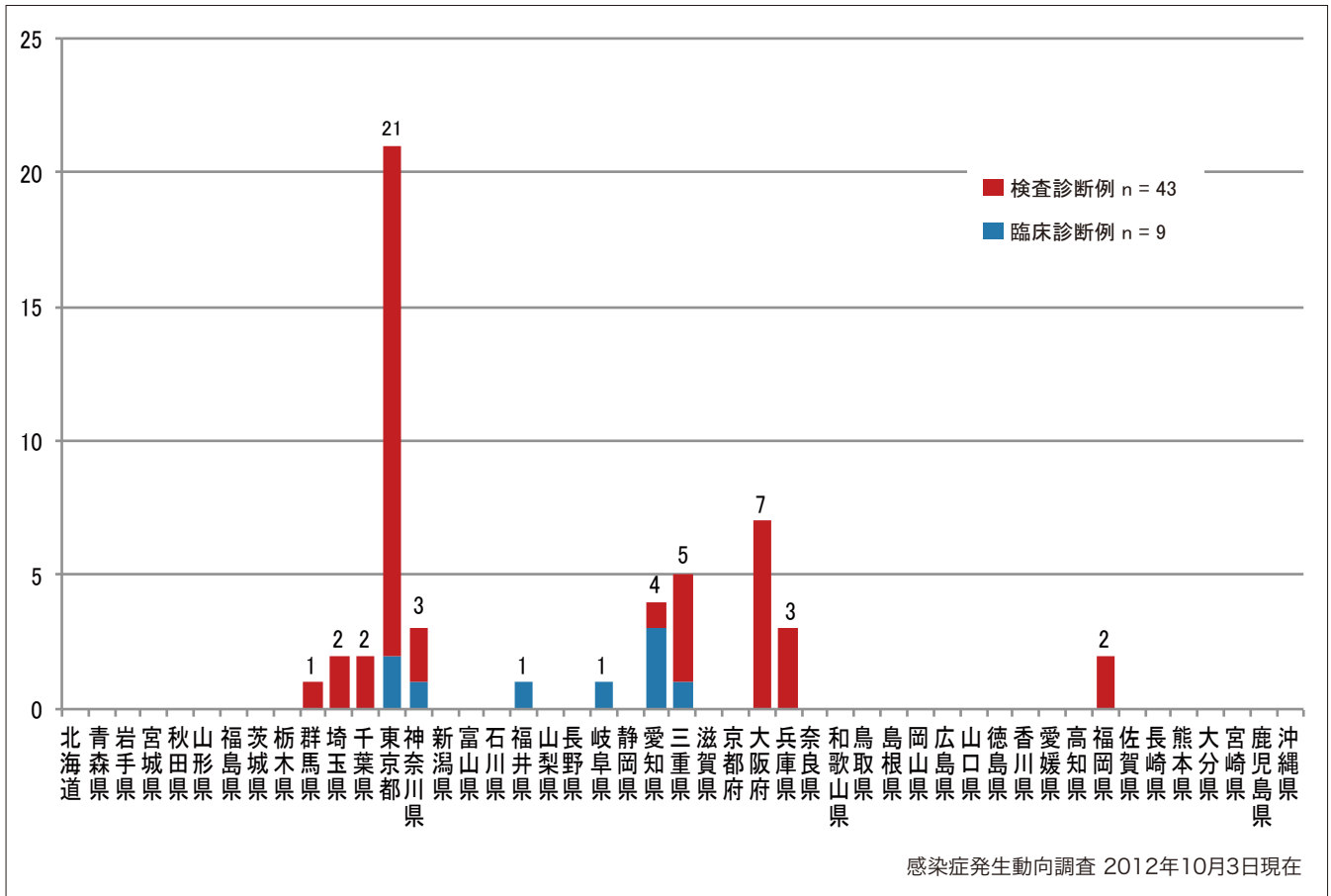
Weekly rubella cases from week 1 to week 39, 2012 (based on diagnosed week as of October 3, 2012).



3. 都道府県別病型別風しん報告数 2012年 第39週 (n=52)

Reported rubella cases by prefecture and methods of diagnosis in week 39, 2012 (as of October 3, 2012).

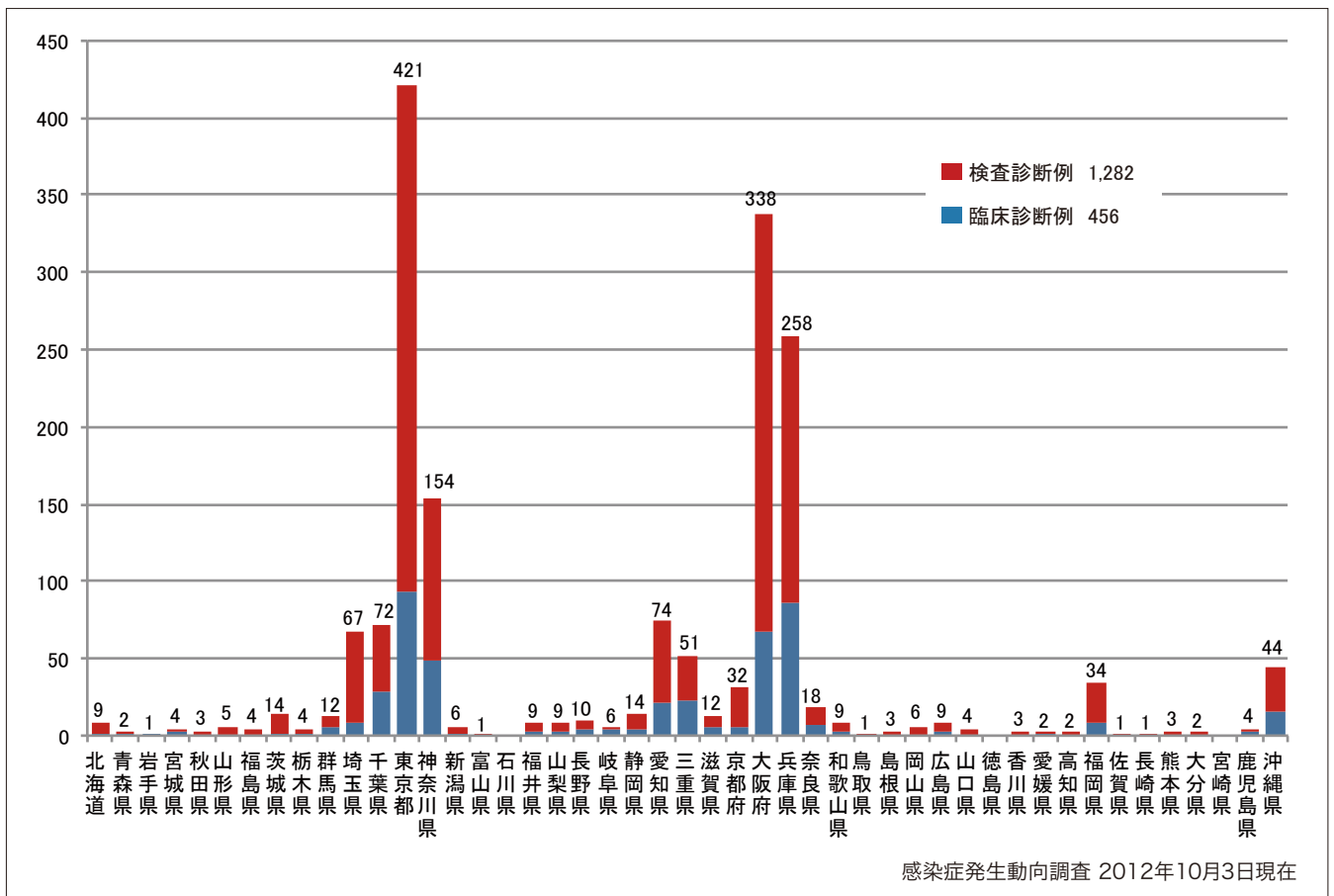
■ Clinically diagnosed ■ Laboratory diagnosed



4. 都道府県別病型別風しん累積報告数 2012年 第1~39週 (n=1,738)

Cumulative rubella cases by prefecture and methods of diagnosis from week 1 to week 39, 2012 (as of October 3, 2012).

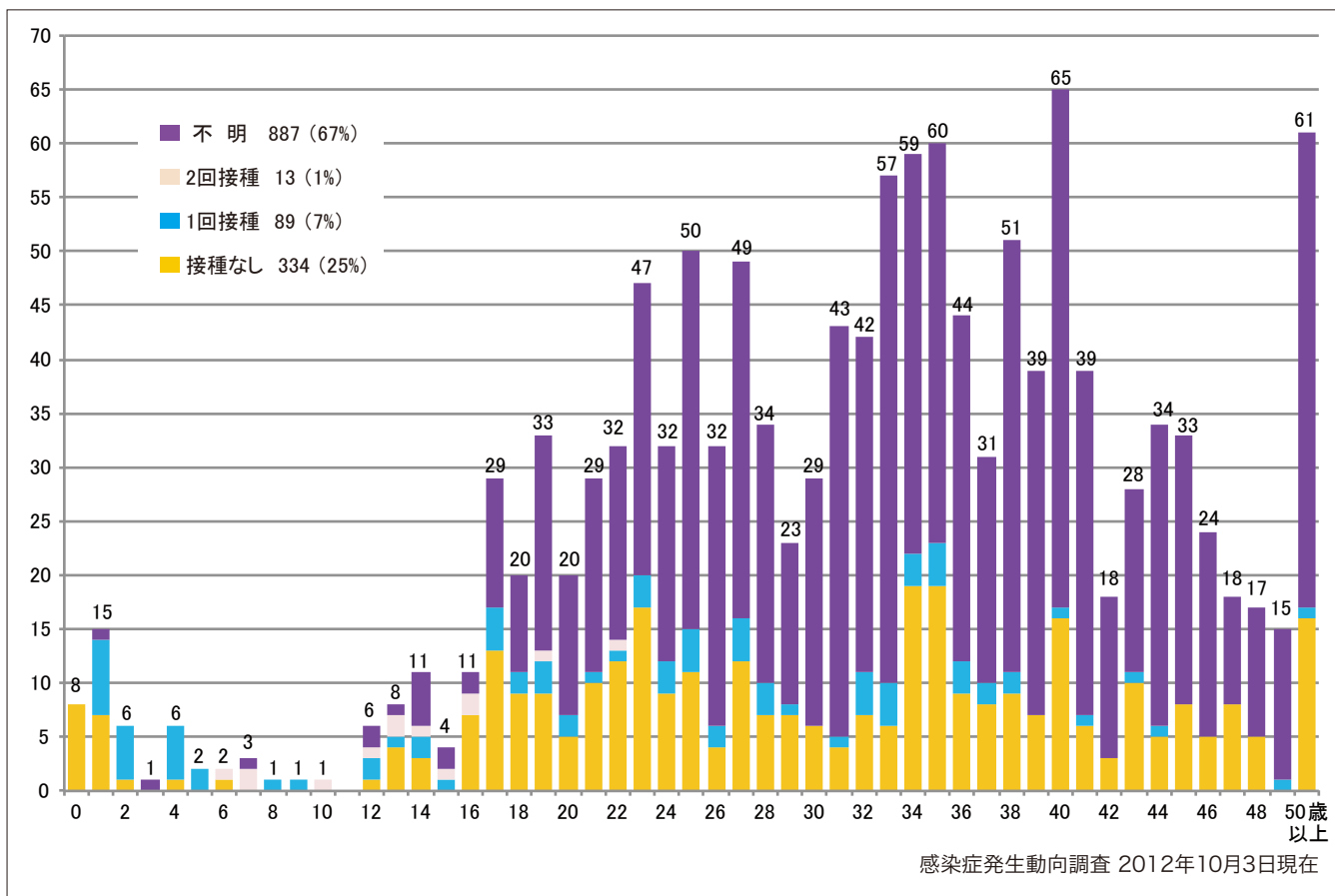
■ Clinically diagnosed ■ Laboratory diagnosed



5-1. 年齢群別接種歴別風しん累積報告数（男性） 2012年 第1~39週（n=1,323）

Cumulative rubella cases (male) by age and vaccinated status from week 1 to week 39, 2012 (as of October 3, 2012).

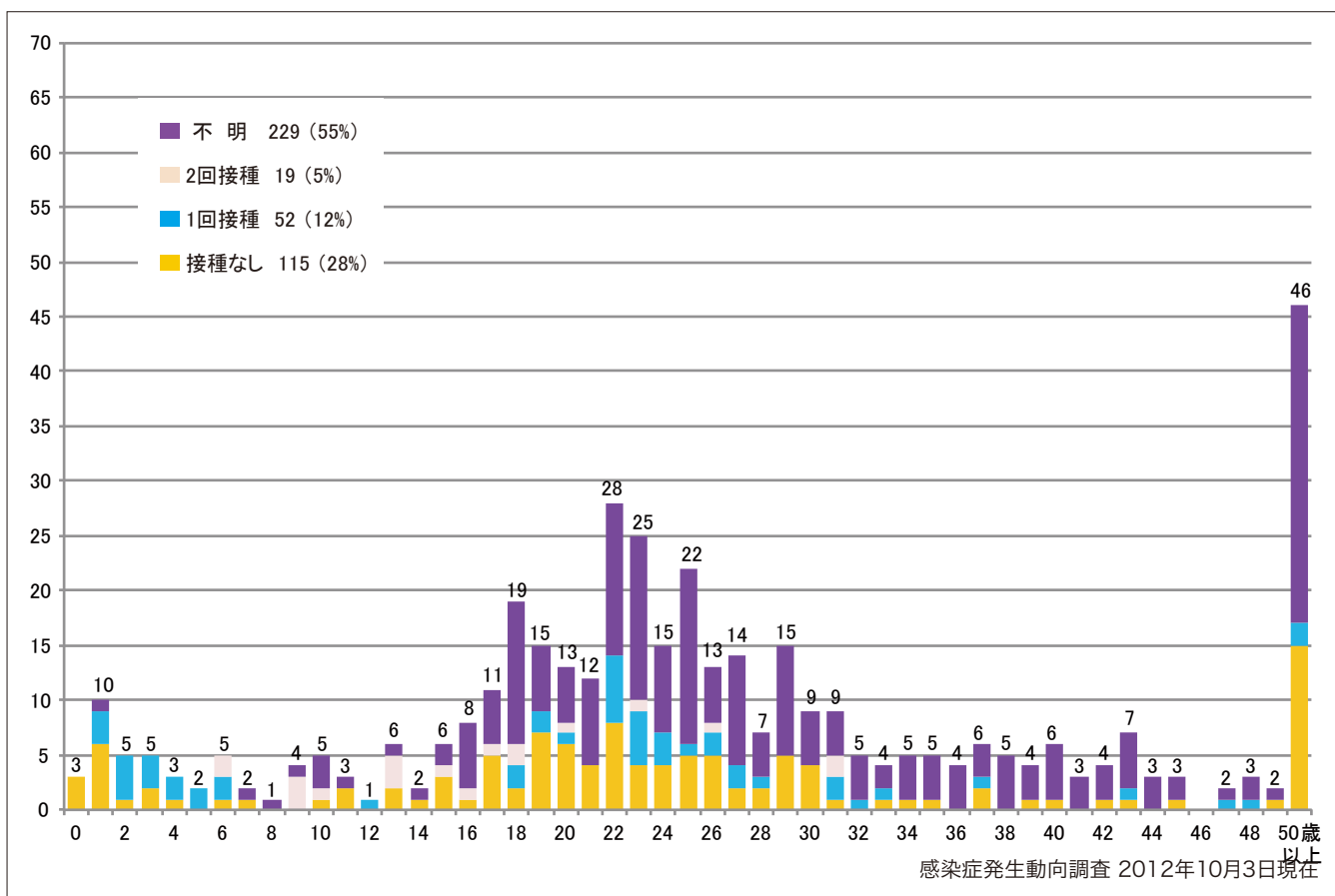
None RCV1 RCV2 Unknown



5-2. 年齢群別接種歴別風しん累積報告数（女性） 2012年 第1~39週（n=415）

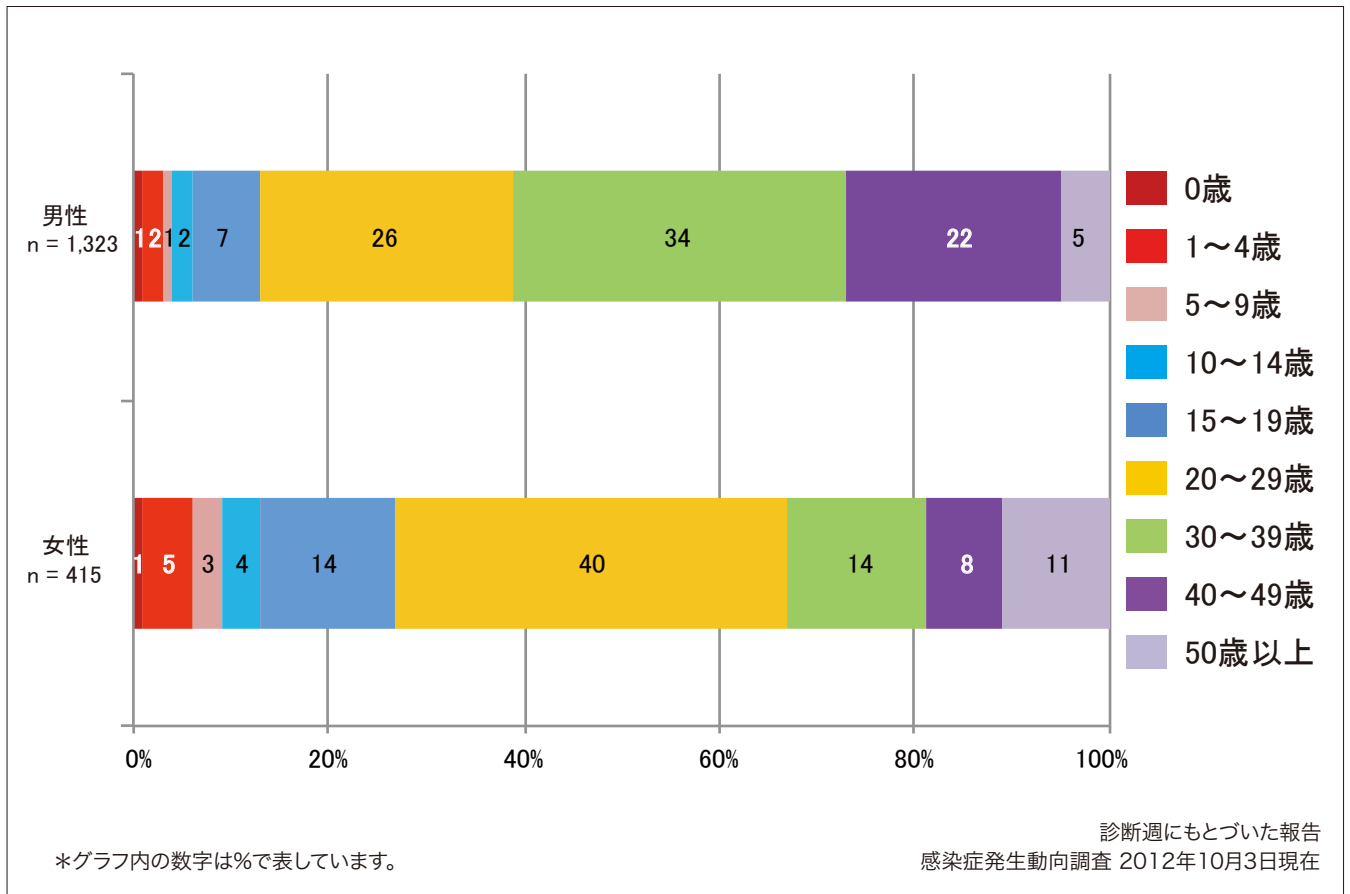
Cumulative rubella cases (female) by age and vaccinated status from week 1 to week 39, 2012 (as of October 3, 2012).

None RCV1 RCV2 Unknown



6. 年齢群別風しん累積報告数割合（男女別） 2012年 第1～39週（n=1,738）

Percentage of cumulative rubella cases (upper: male, bottom: female) by age group from week 1 to week 39, 2012 (as of October 3, 2012).

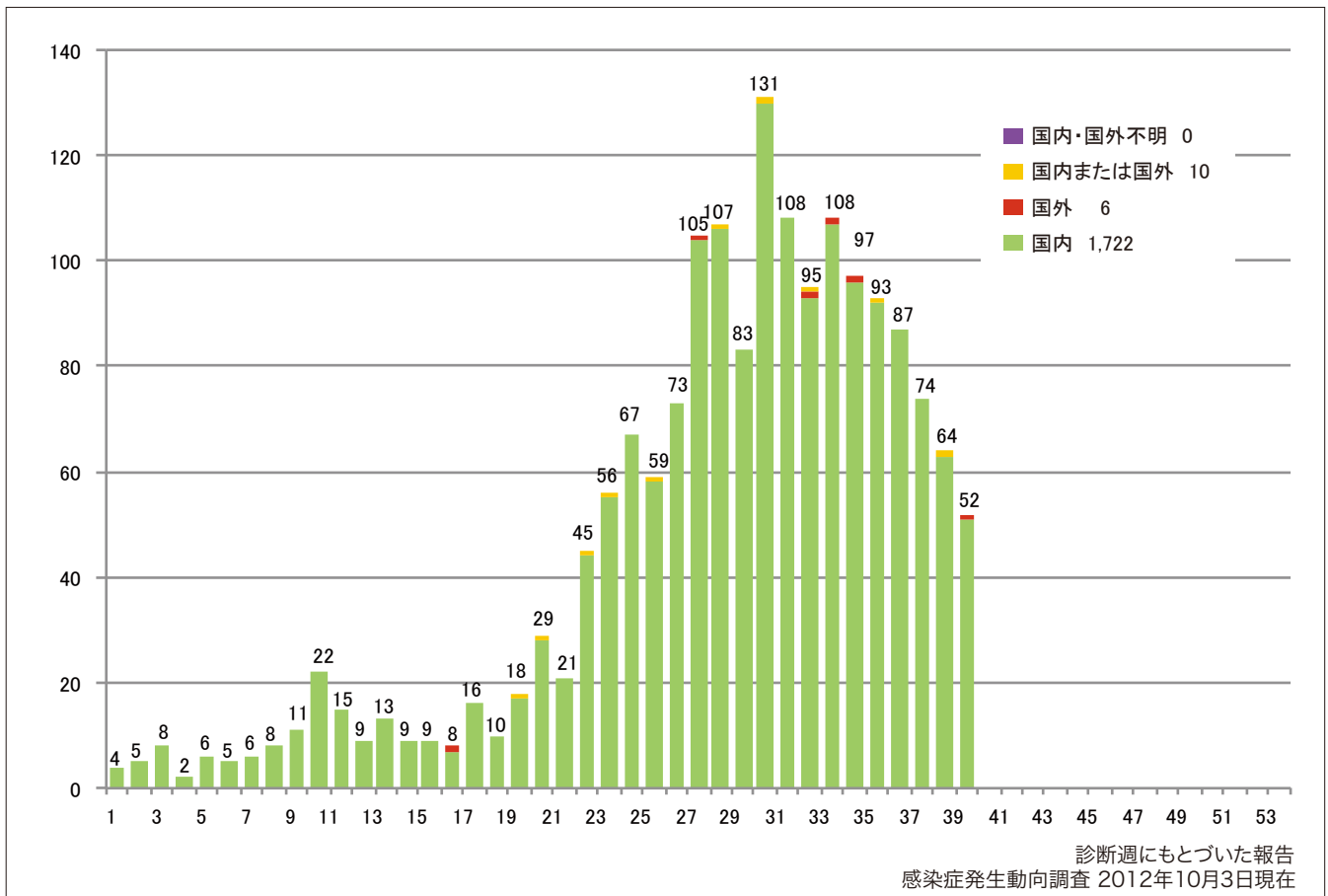


7. 週別推定感染地域（国内・外）別風しん報告数 2012年 第1~39週 (n=1,738)

Weekly rubella cases by acquired region from week 1 to week 39, 2012

(based on diagnosed week as of October 3, 2012).

■ Domestic cases ■ Imported cases ■ Unspecified ■ Unknown

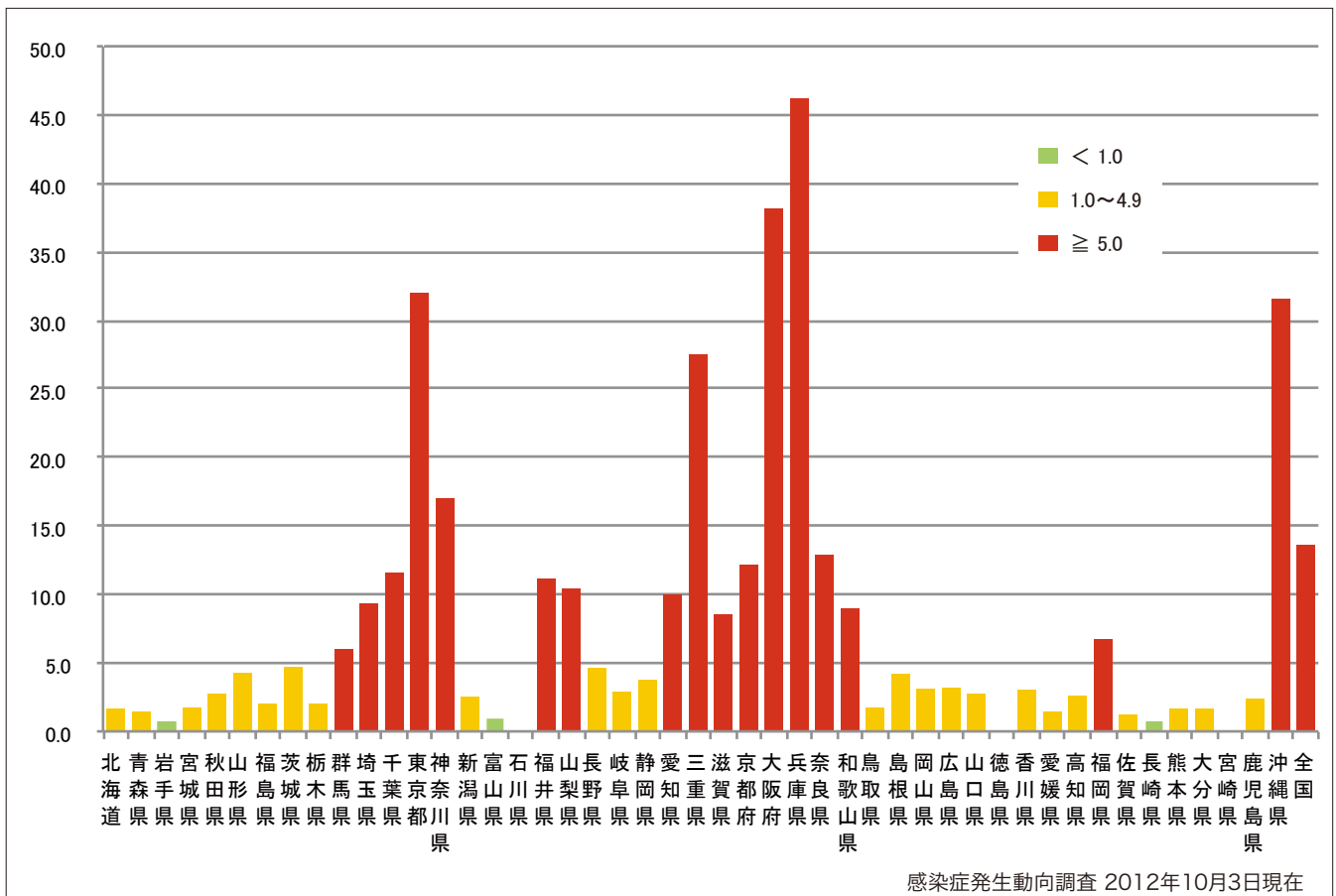


8. 都道府県別人口百万人あたり風しん報告数 2012年 第1~39週 (n=1,738)

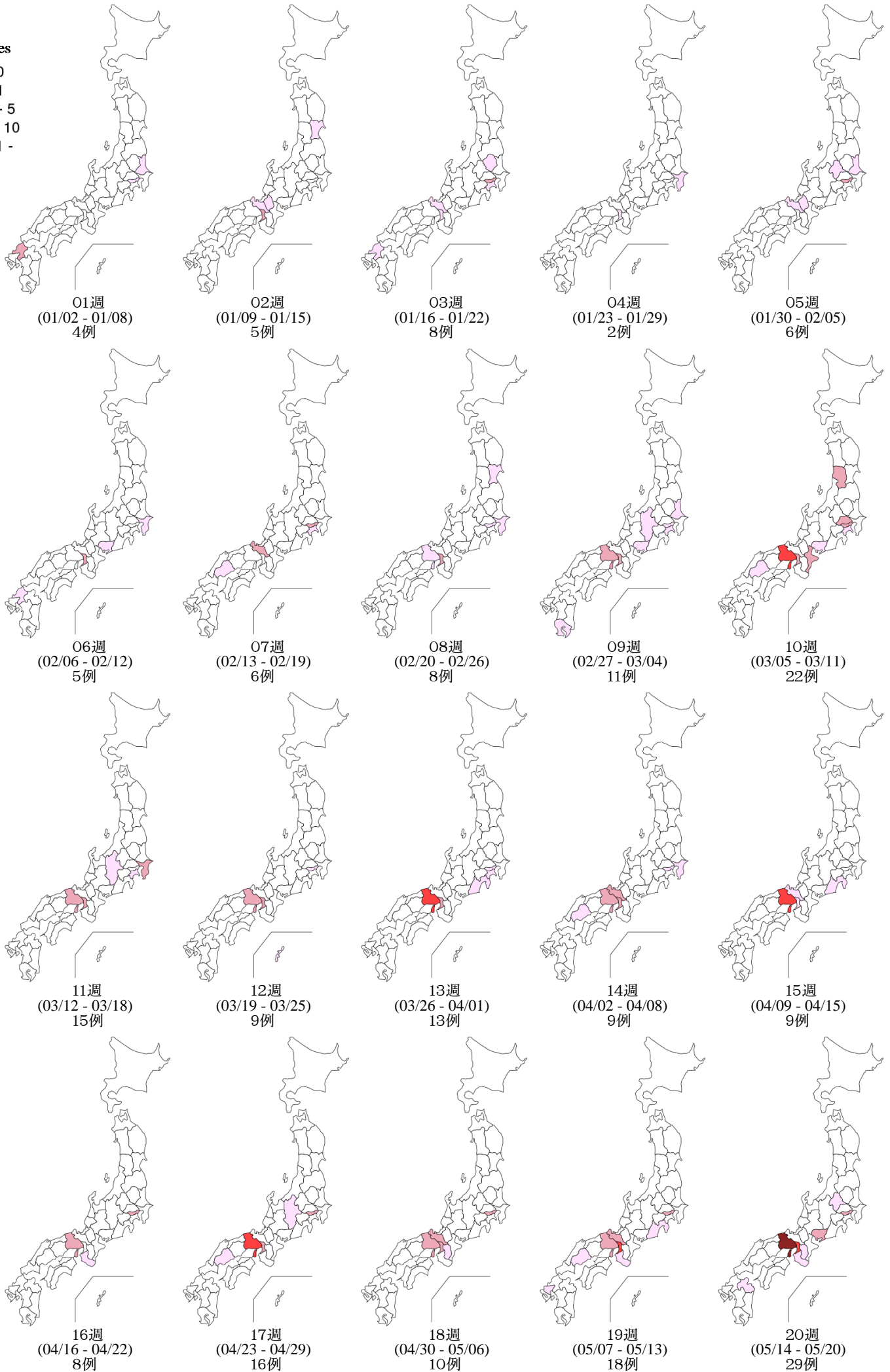
Number of reported cases per 1 million population by prefectures from week 1 to week 39, 2012

(as of October 3, 2012).

■ < 1.0 ■ 1.0~4.9 ■ ≥ 5.0



Weekly rubella cases from week 1 to week 39, 2012 (based on diagnosed week as of October 03, 2012)



9. 都道府県別風しん週別報告状況 2012年 第1~39週 感染症発生動向調査

2012年10月03日現在

Weekly rubella cases from week 1 to week 39, 2012 (based on diagnosed week as of October 03, 2012)

報告数
No. of cases

