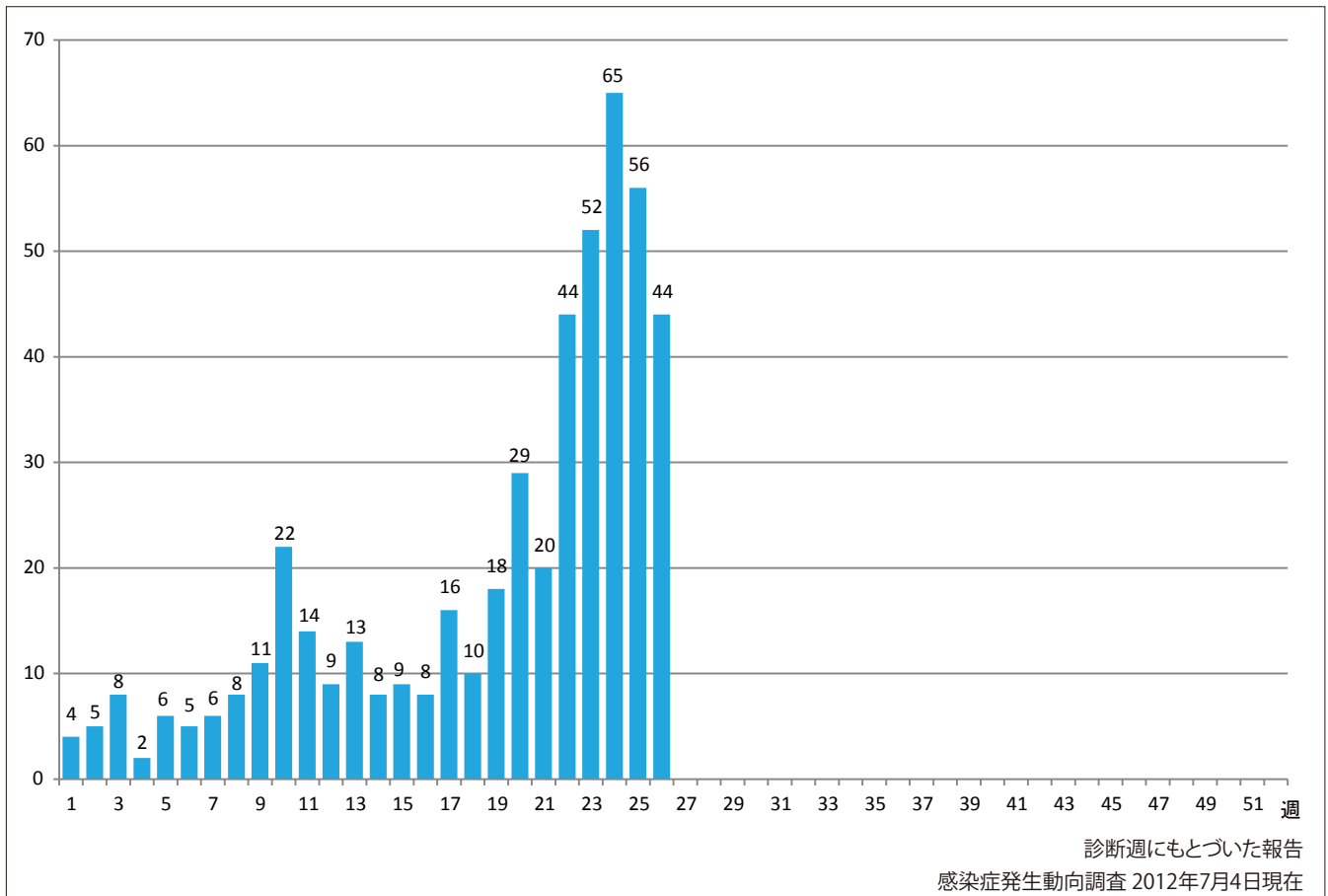


1. 週別風しん報告数 2012年 第1~26週 (n=492)

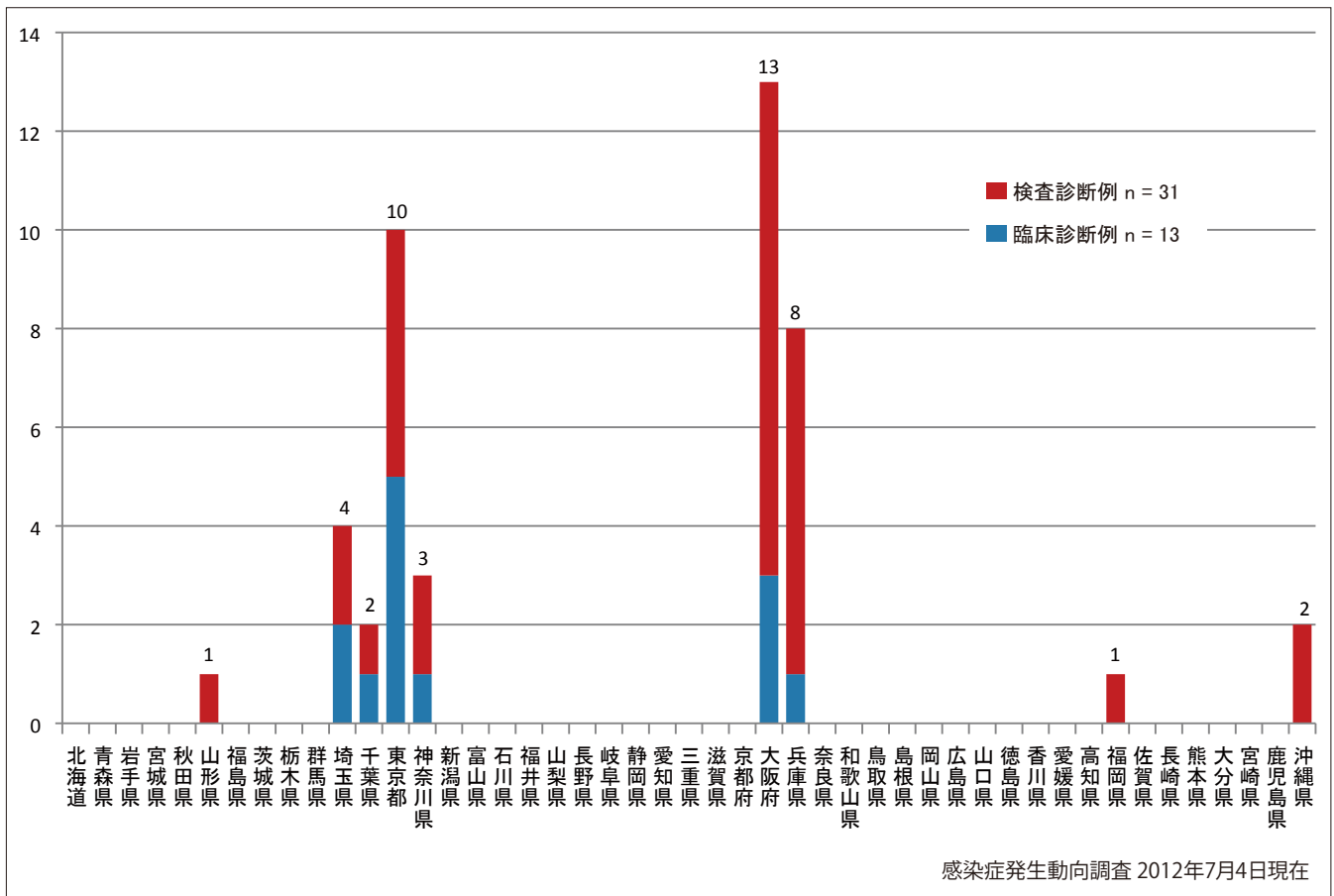
Weekly rubella cases from week 1 to week 26, 2012 (based on diagnosed week as of July 4, 2012).



2. 都道府県別病型別風しん報告数 2012年 第26週 (n=44)

Reported rubella cases by prefecture and methods of diagnosis in week 26, 2012 (as of July 4, 2012).

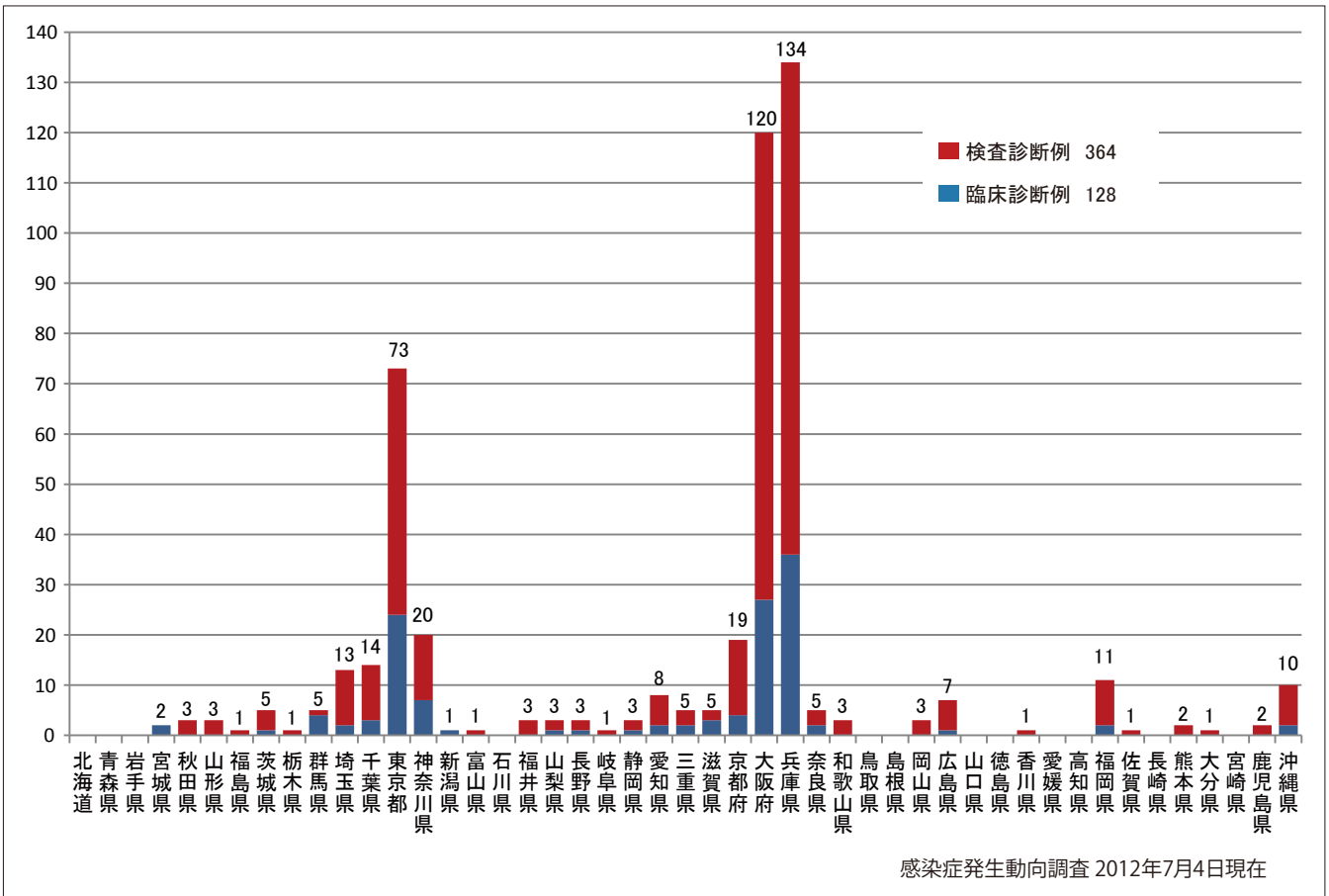
■ Clinically diagnosed ■ Laboratory diagnosed



3. 都道府県別病型別風しん累積報告数 2012年 第1~26週 (n=492)

Cumulative rubella cases by prefecture and methods of diagnosis from week 1 to week 26, 2012 (as of July 4, 2012).

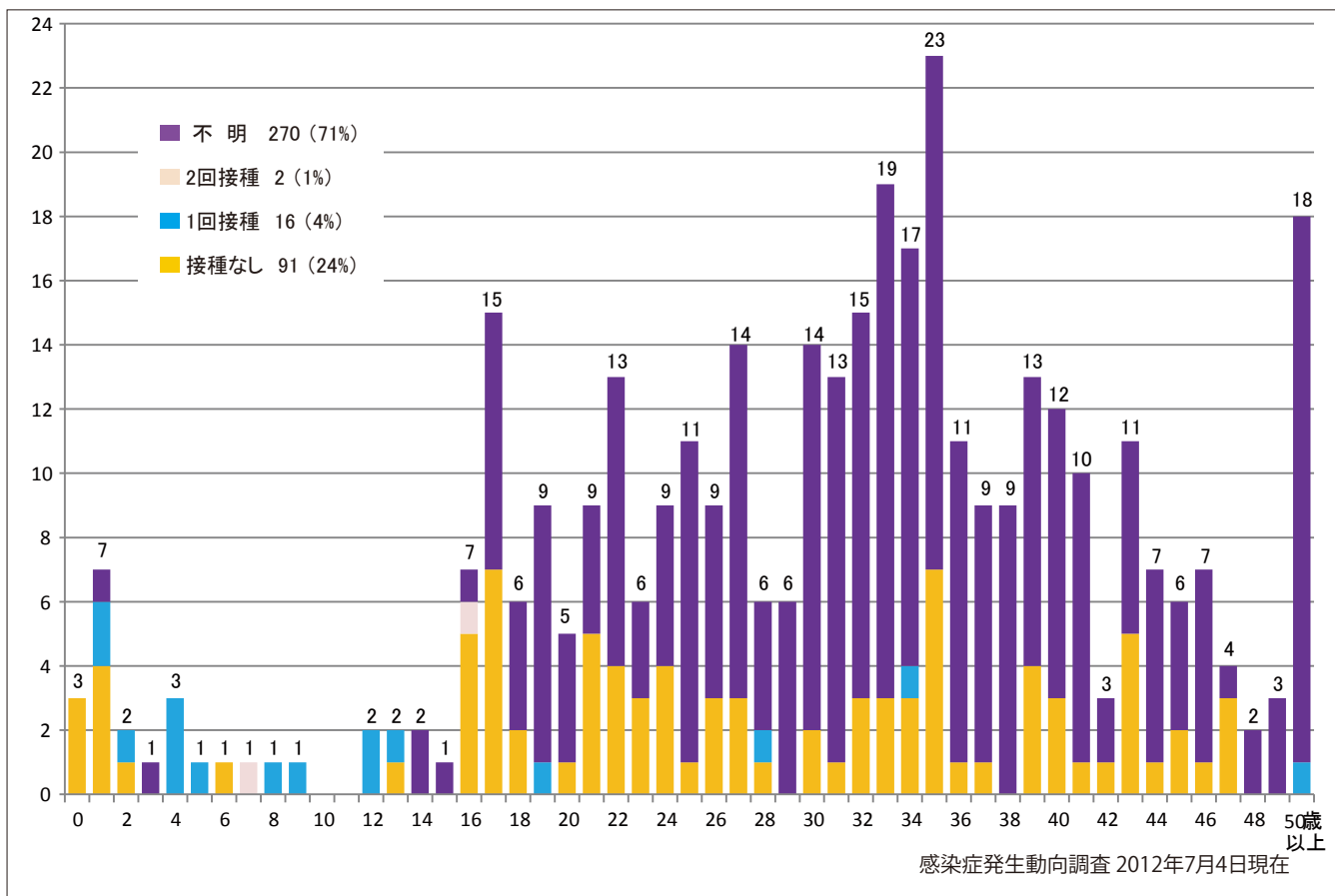
■ Clinically diagnosed ■ Laboratory diagnosed



4-1. 年齢群別接種歴別風しん累積報告数 (男性) 2012年 第1~26週 (n=379)

Cumulative rubella cases (male) by age and vaccinated status from week 1 to week 26, 2012 (as of July 4, 2012).

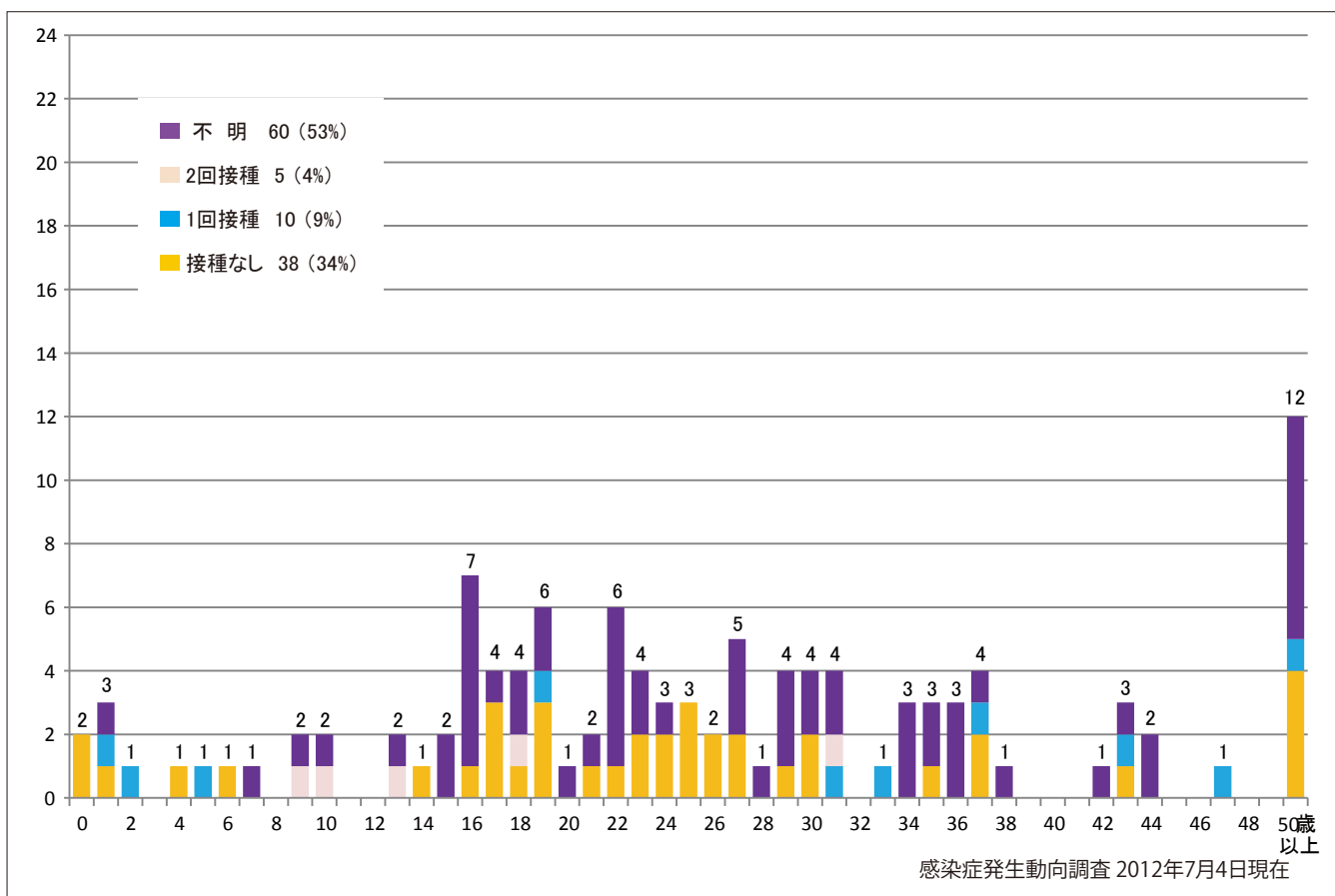
None RCV1 RCV2 Unknown



4-2. 年齢群別接種歴別風しん累積報告数 (女性) 2012年 第1~26週 (n=113)

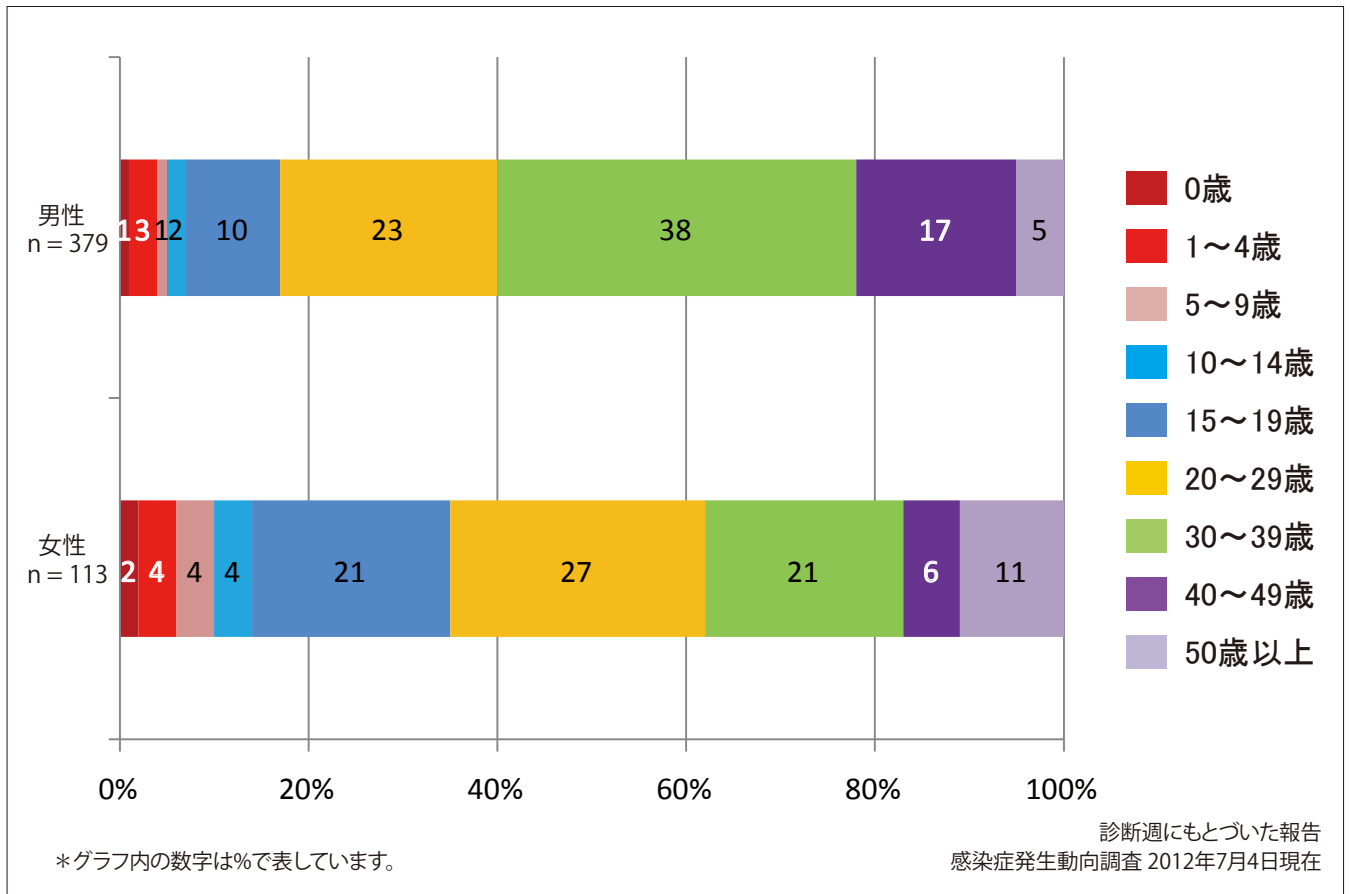
Cumulative rubella cases (female) by age and vaccinated status from week 1 to week 26, 2012 (as of July 4, 2012).

None RCV1 RCV2 Unknown



5. 年齢群別風しん累積報告数割合（男女別） 2012年 第1～26週（n=492）

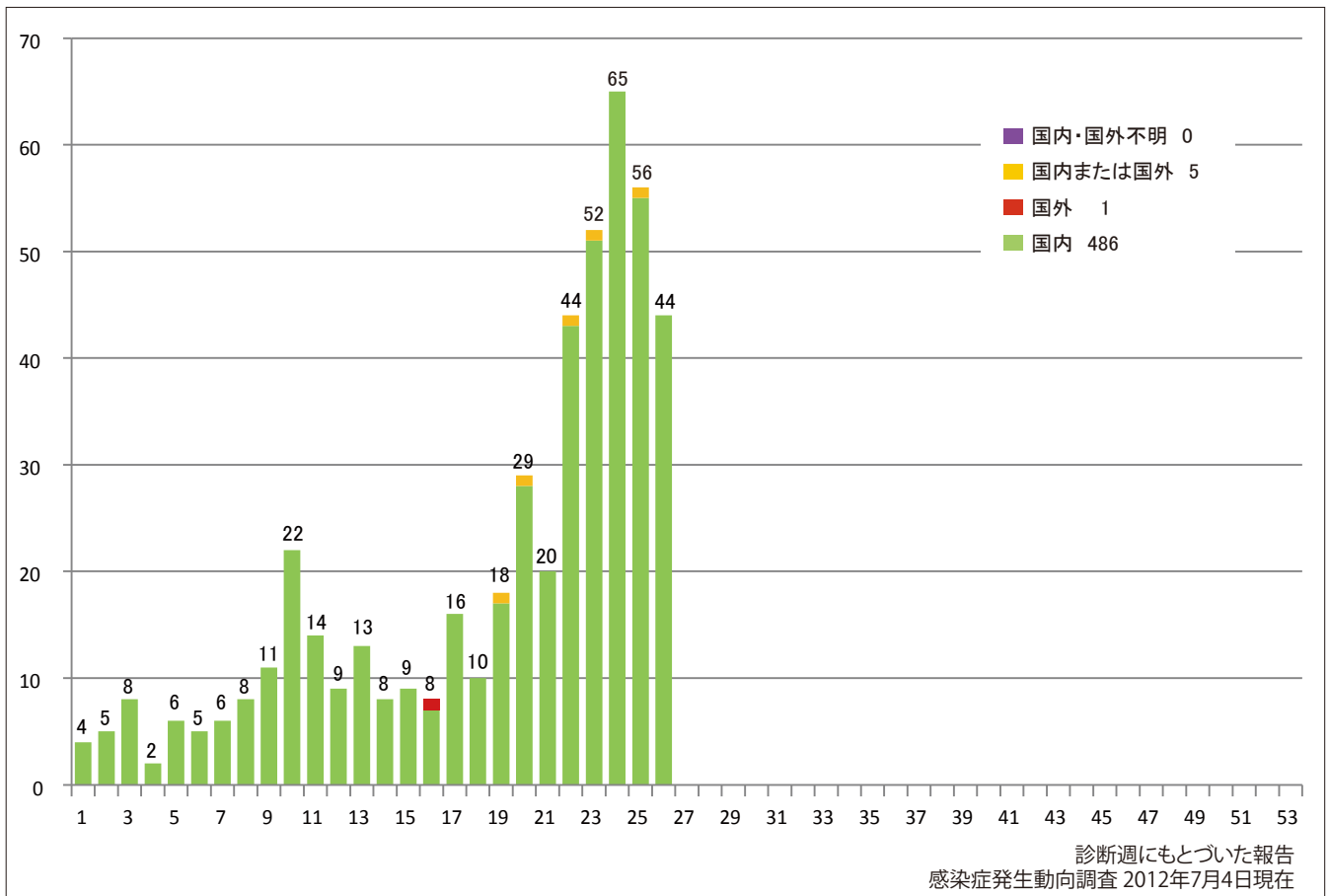
Percentage of cumulative rubella cases (upper: male, bottom: female) by age group from week 1 to week 26, 2012 (as of July 4, 2012).



6. 週別推定感染地域（国内・外）別風しん報告数 2012年 第1～26週（n=492）

Weekly rubella cases by acquired region from week 1 to week 26, 2012
(based on diagnosed week as of July 4, 2012).

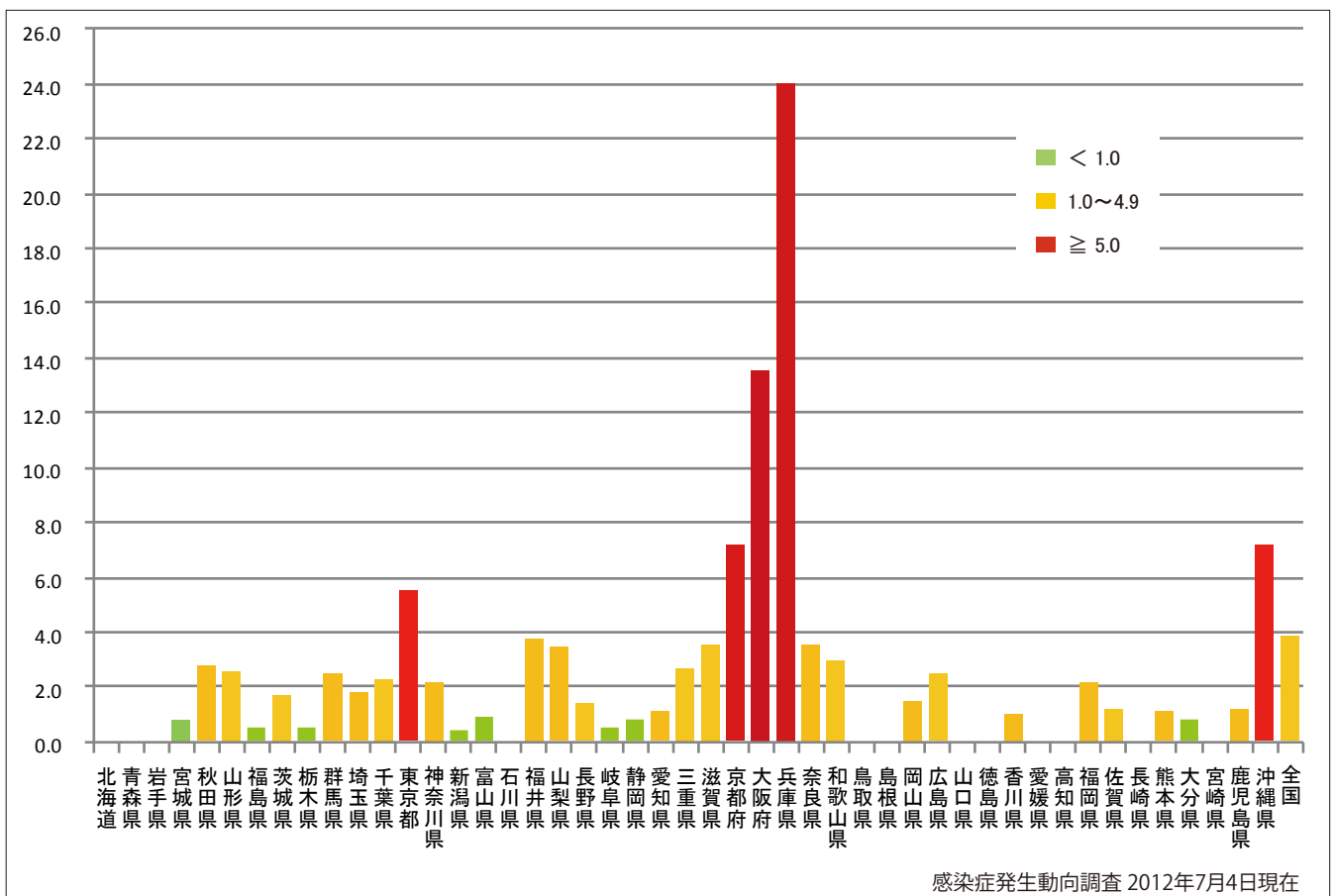
■ Domestic cases ■ Imported cases ■ Unspecified ■ Unknown



7. 都道府県別人口百万人あたり風しん報告数 2012年 第1～26週（n=492）

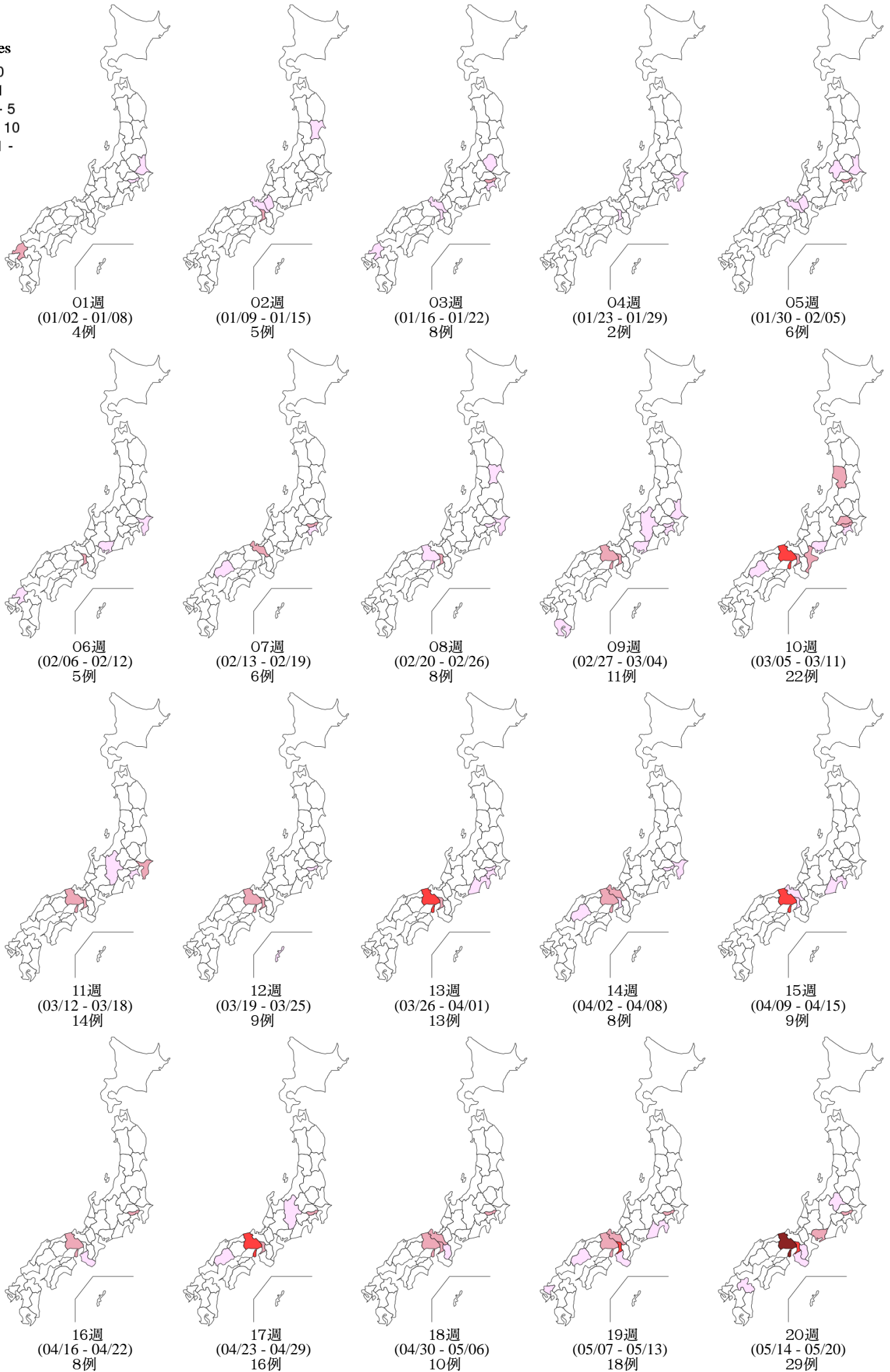
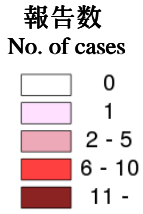
Number of reported cases per 1 million population by prefectures from week 1 to week 26, 2012
(as of July 4, 2012).

■ <1.0 ■ 1.0~4.9 ■ ≥5.0



8. 都道府県別風しん週別報告状況 2012年 第1~26週 感染症発生動向調査
 Weekly rubella cases from week 1 to week 26, 2012 (based on diagnosed week as of July 04, 2012)

2012年07月04日現在



8. 都道府県別風しん週別報告状況 2012年 第1~26週 感染症発生動向調査
 Weekly rubella cases from week 1 to week 26, 2012 (based on diagnosed week as of July 04, 2012)

2012年07月04日現在

