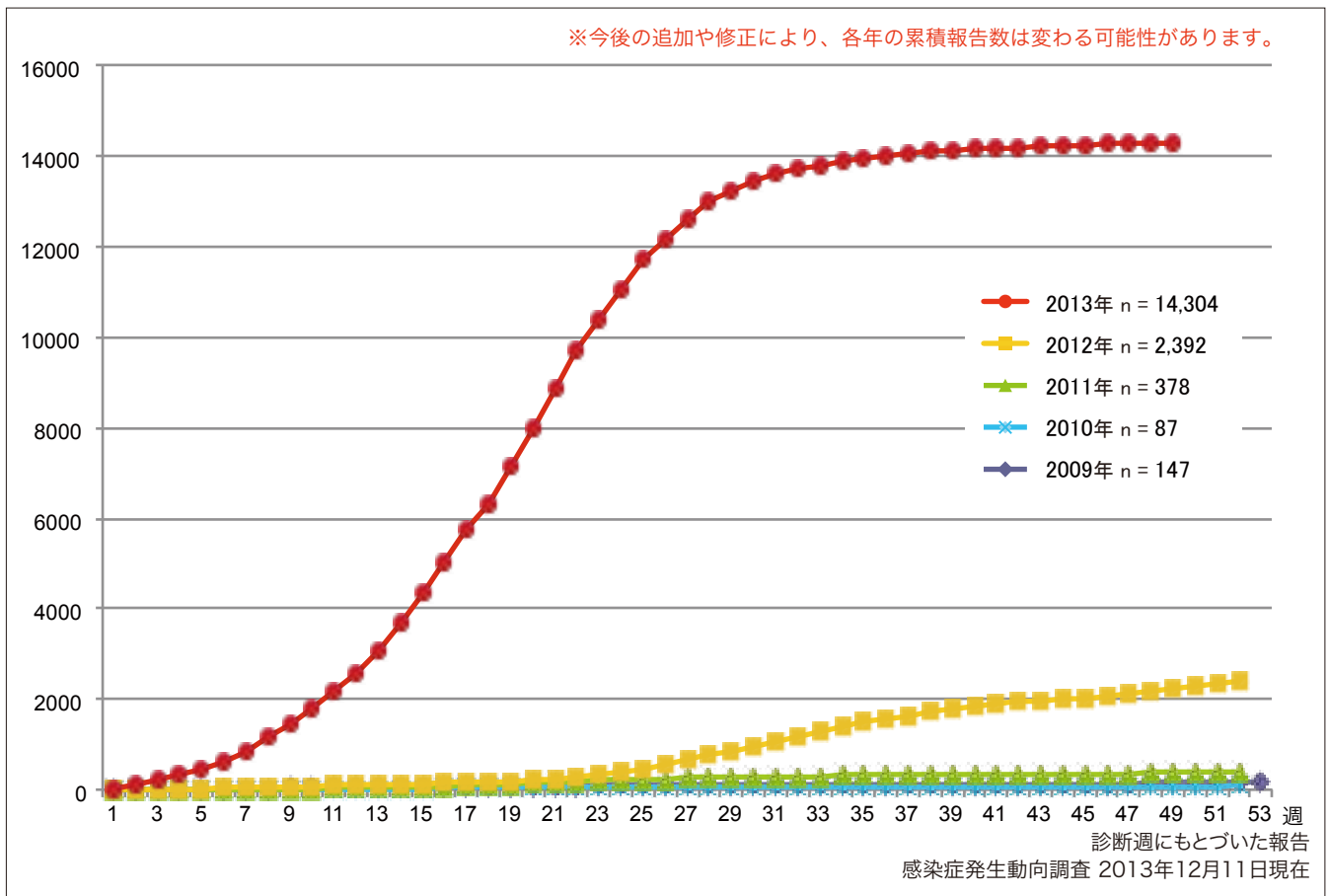


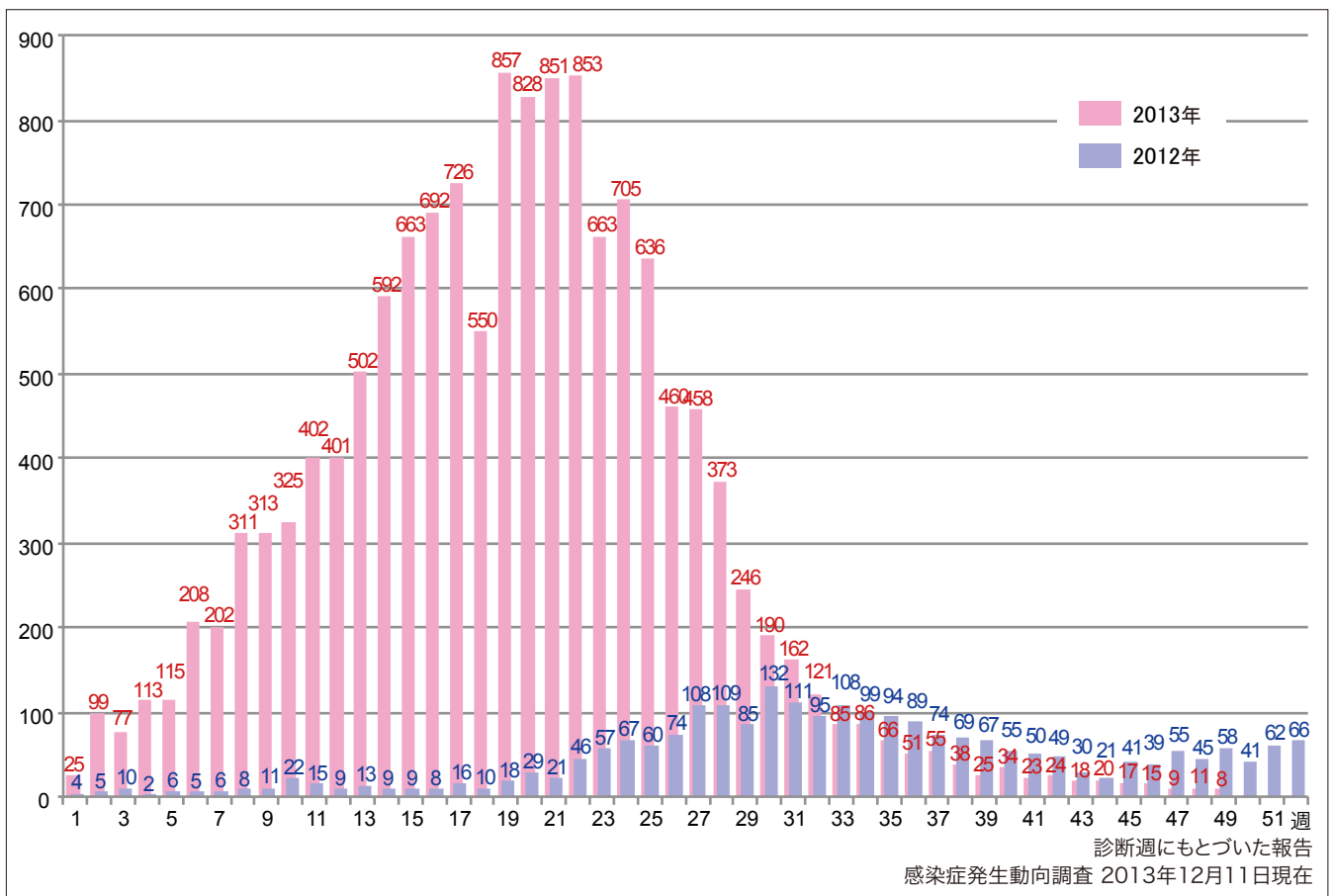
1. 風しん累積報告数の推移 2009～2013年（第1～49週）

Cumulative number of rubella cases by week, 2009–2013 (week1–49)  
 (based on diagnosed week as of December 11, 2013).



2. 週別風しん報告数 2013年第1～49週（n=14,304）

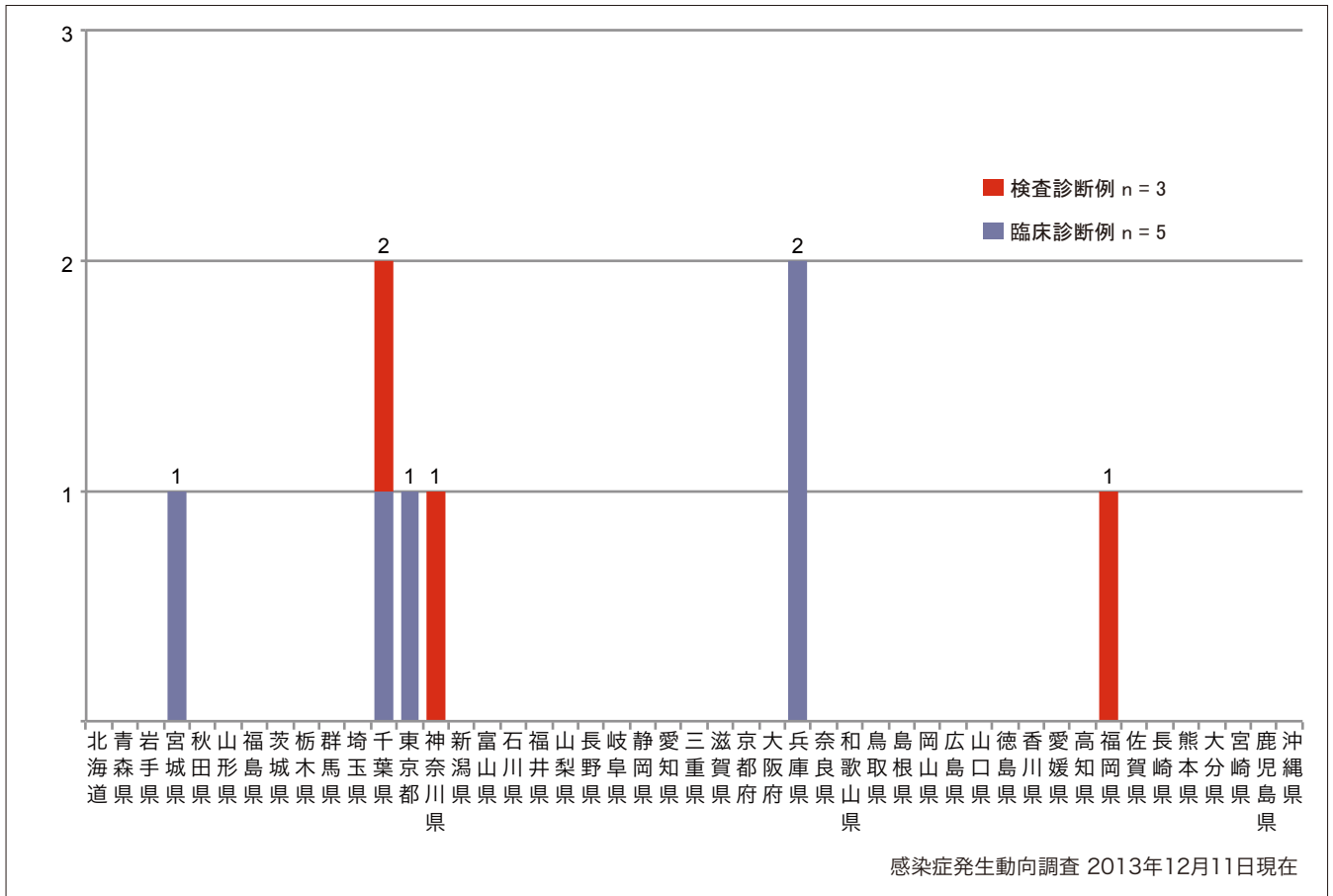
Weekly rubella cases from week 1 to week 49, 2013 (based on diagnosed week as of December 11, 2013).



3. 都道府県別病型別風しん報告数 2013年 第49週 (n=8)

Reported rubella cases by prefecture and methods of diagnosis in week 49, 2013  
(as of December 11, 2013).

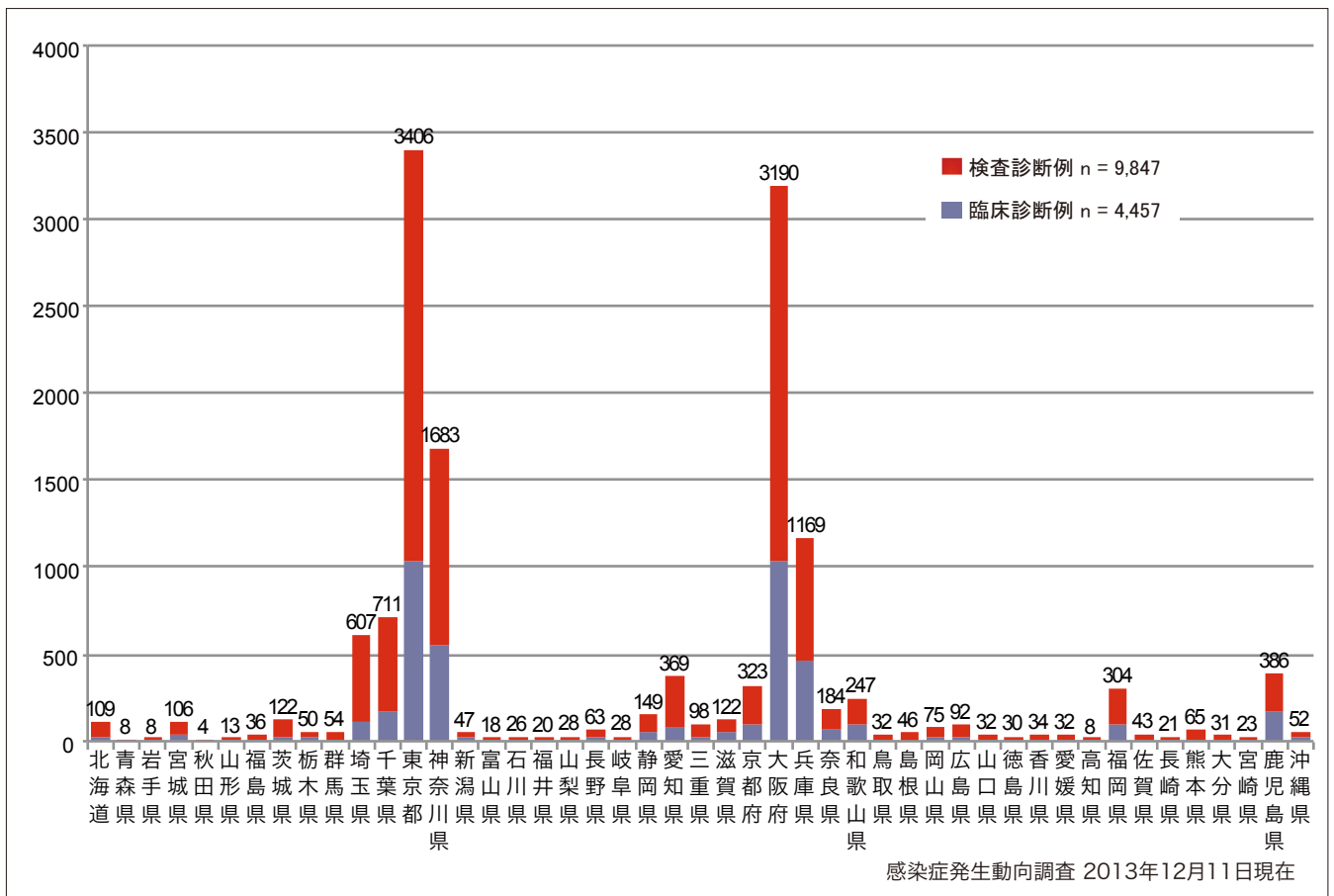
■ Clinically diagnosed ■ Laboratory diagnosed



4. 都道府県別病型別風しん累積報告数 2013年 第1~49週 (n=14,304)

Cumulative rubella cases by prefecture and methods of diagnosis from week 1 to week 49, 2013  
(as of December 11, 2013).

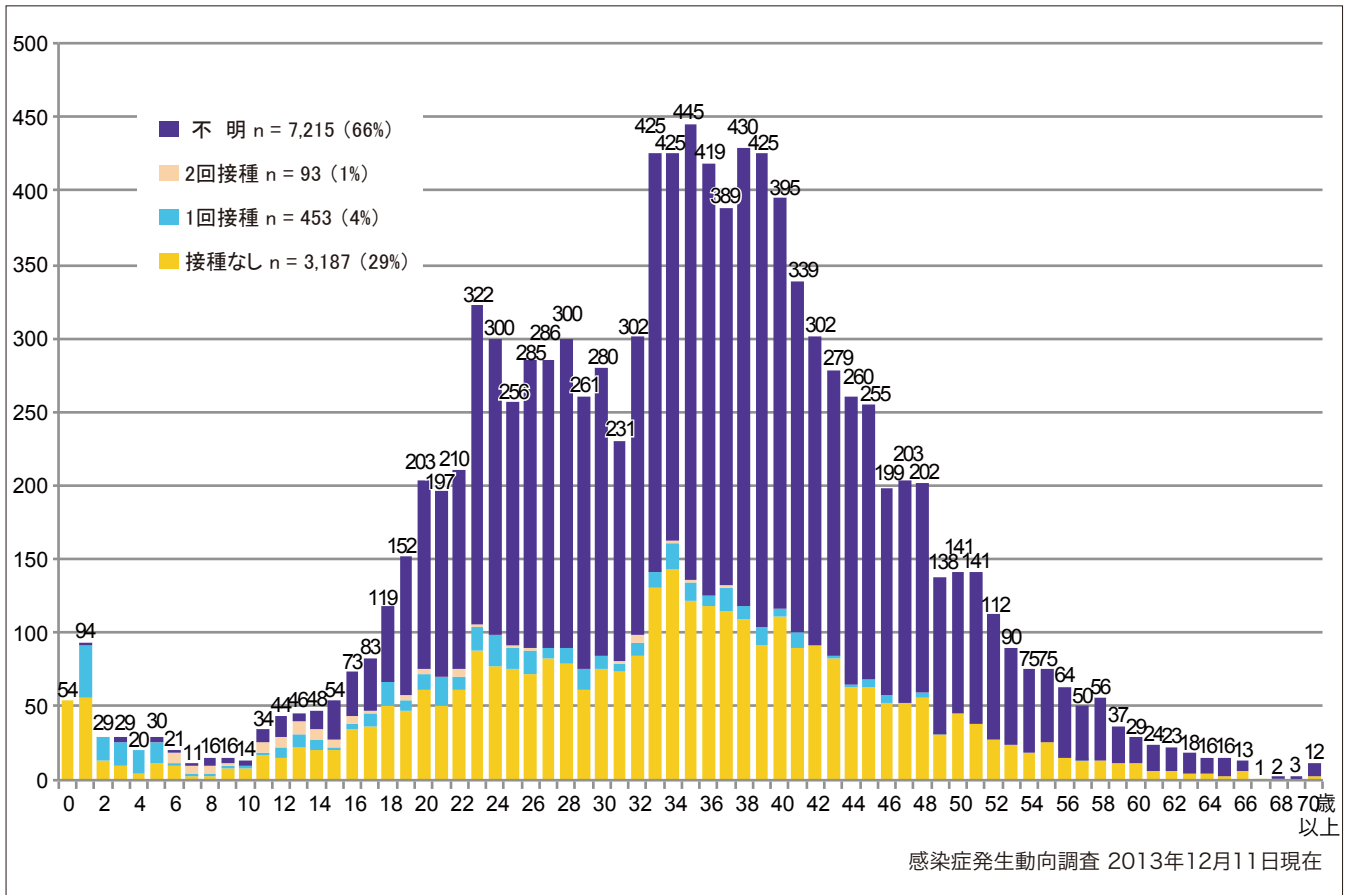
■ Clinically diagnosed ■ Laboratory diagnosed



5-1. 年齢群別接種歴別風しん累積報告数 (男性) 2013年 第1~49週 (n=10,948)

Cumulative rubella cases (male) by age and vaccinated status from week 1 to week 49, 2013 (as of December 11, 2013).

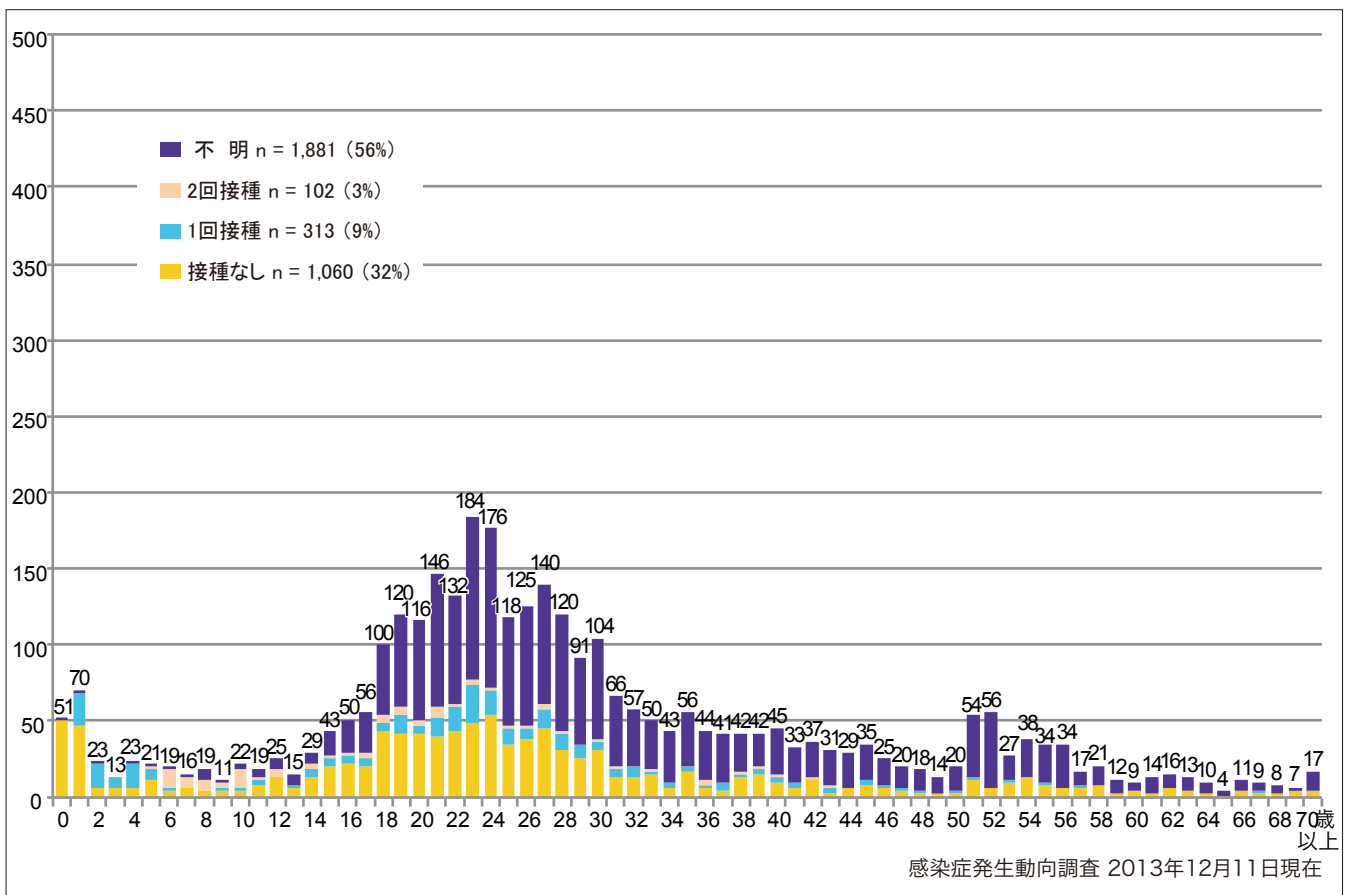
■ None ■ RCV1 ■ RCV2 ■ Unknown



5-2. 年齢群別接種歴別風しん累積報告数 (女性) 2013年 第1~49週 (n=3,356)

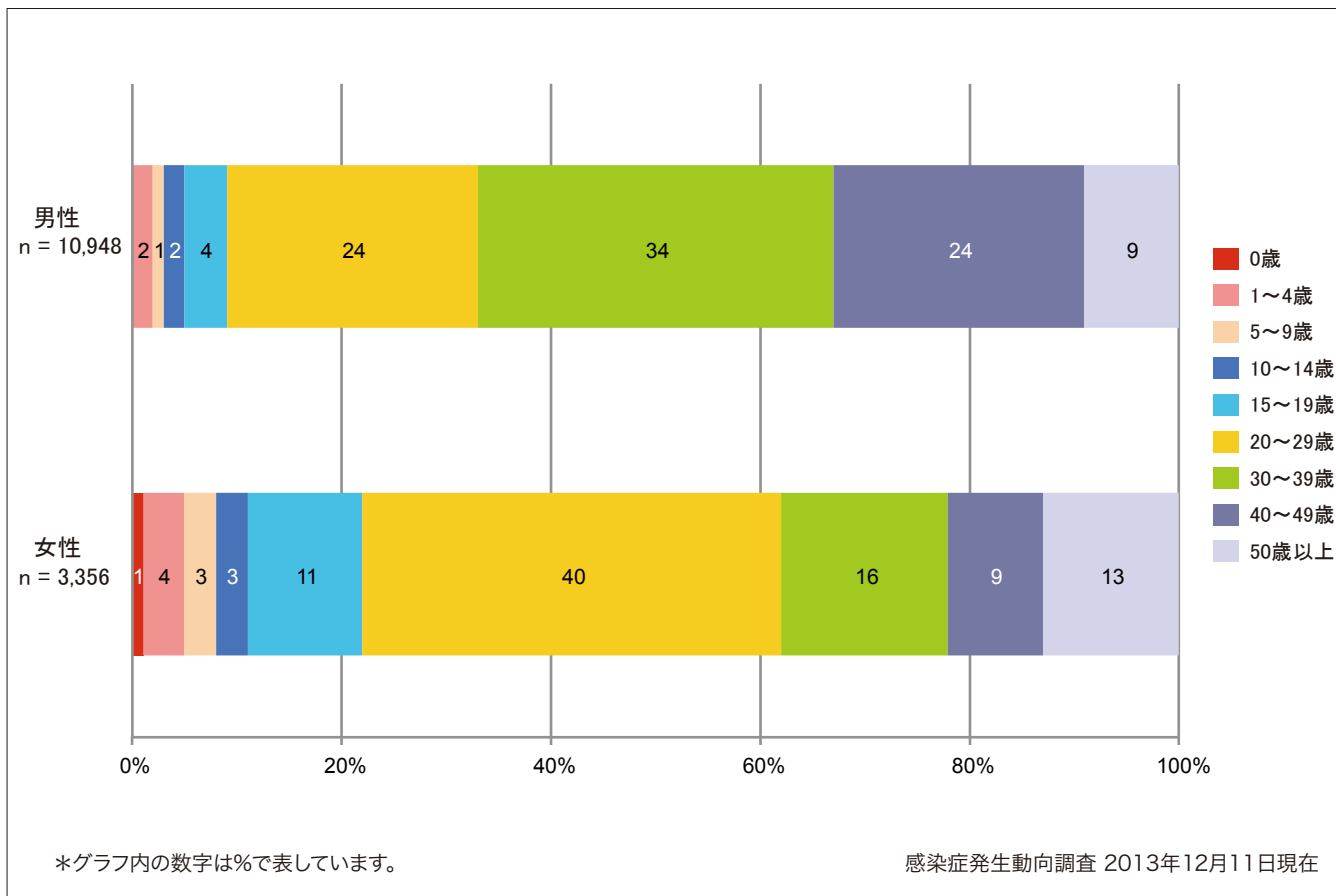
Cumulative rubella cases (female) by age and vaccinated status from week 1 to week 49, 2013 (as of December 11, 2013).

■ None ■ RCV1 ■ RCV2 ■ Unknown



6. 年齢群別風しん累積報告数割合（男女別） 2013年 第1～49週（n=14,304）

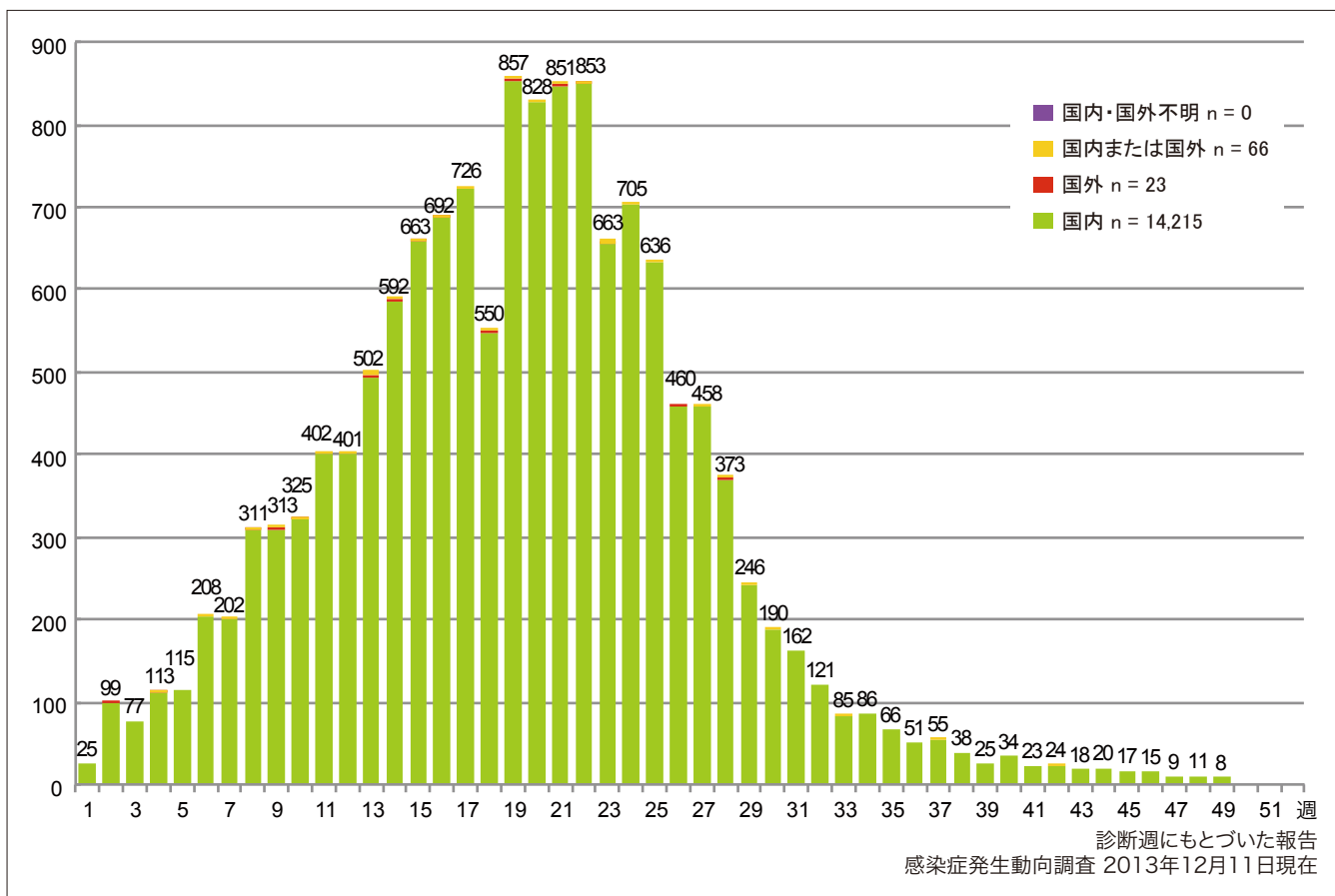
Percentage of cumulative rubella cases (upper: male, bottom: female) by age group from week 1 to week 49, 2013 (as of December 11, 2013).



7. 週別推定感染地域（国内・外）別風しん報告数 2013年 第1～49週（n=14,304）

Weekly rubella cases by acquired region from week 1 to week 49, 2013 (based on diagnosed week as of December 11, 2013).

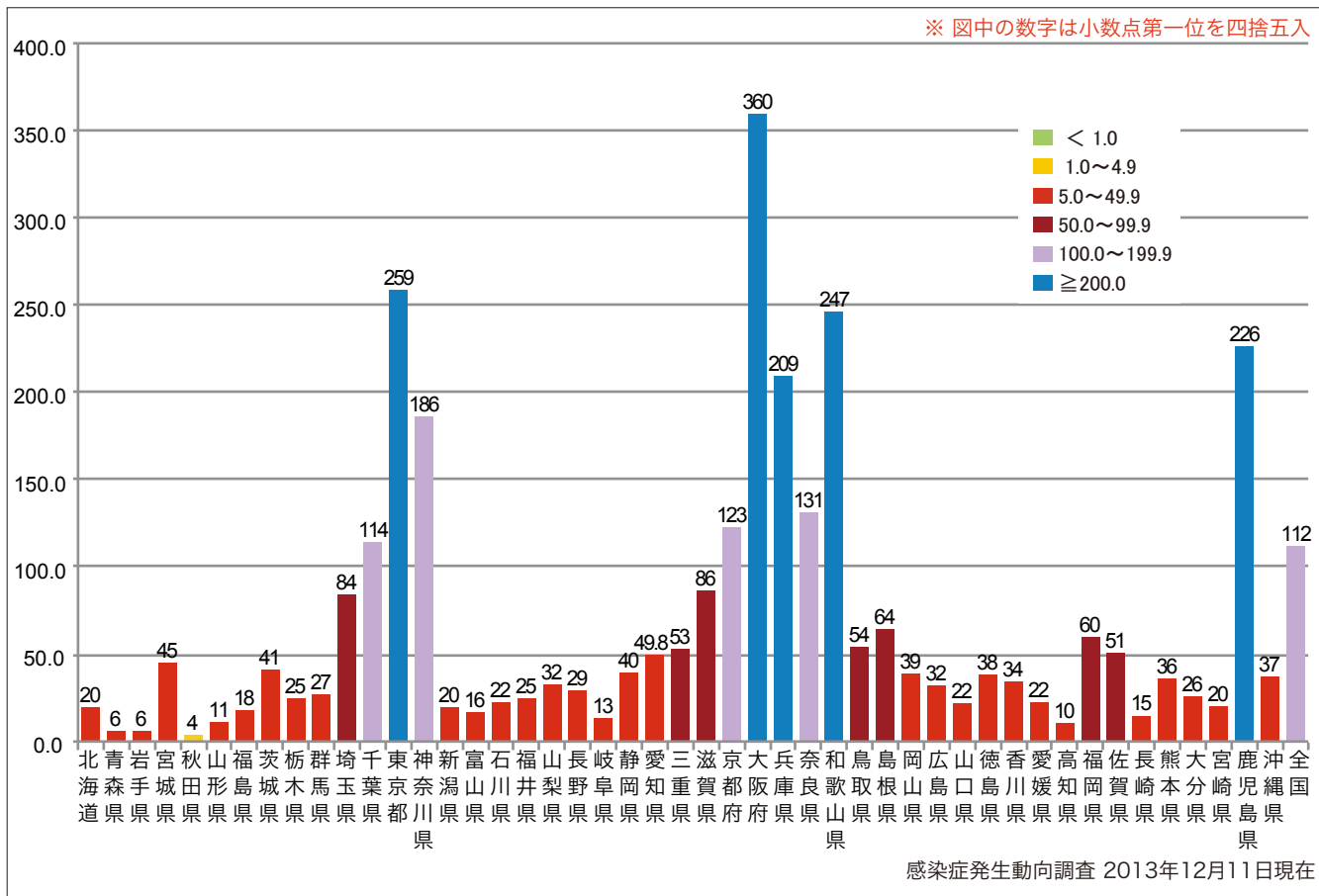
■ Domestic cases ■ Imported cases ■ Unspecified ■ Unknown



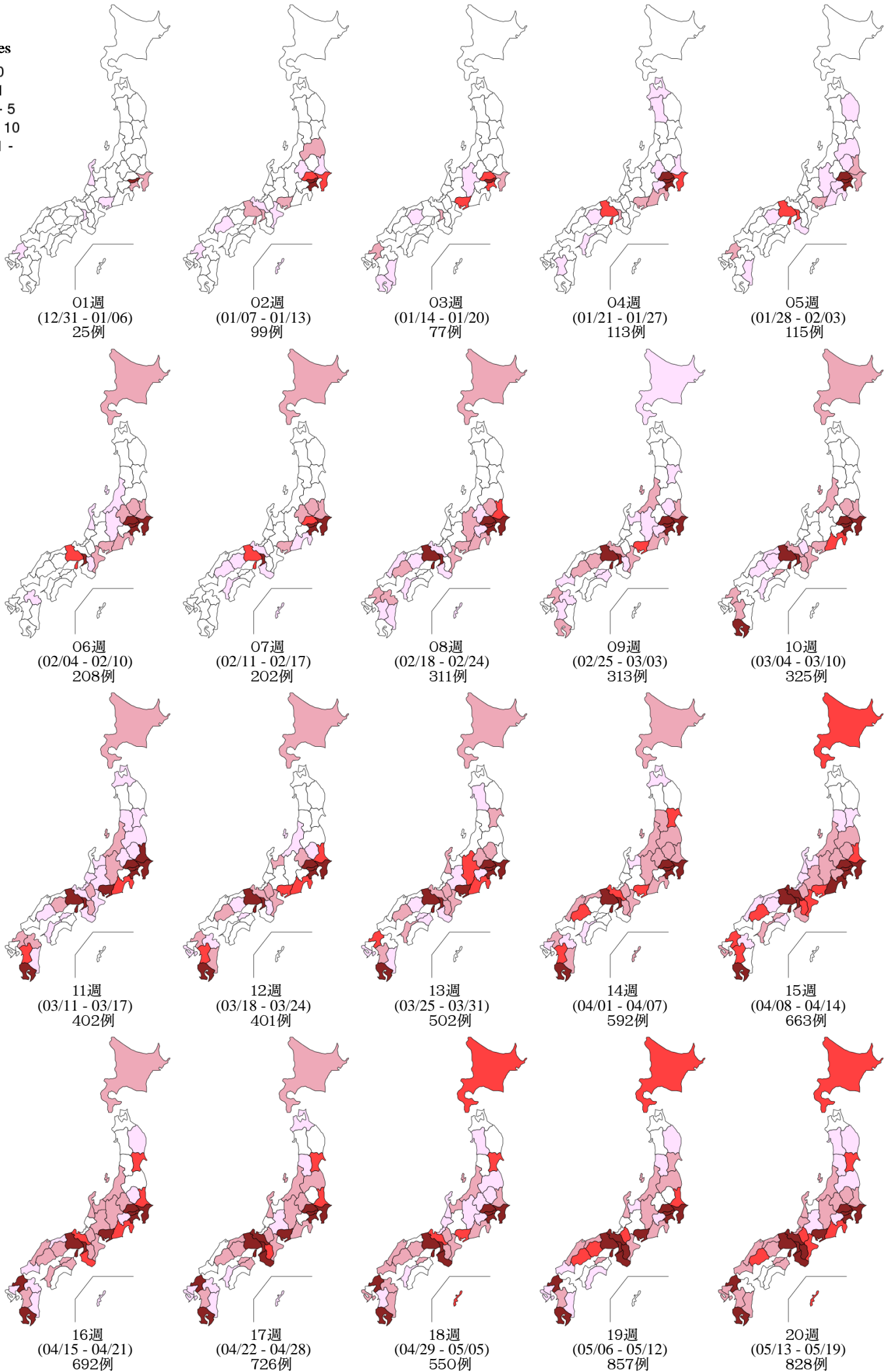
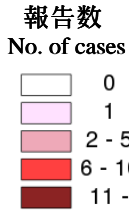
8. 都道府県別人口百万人あたり風しん報告数 2013年 第1~49週 (n=14,304)

Number of reported cases per 1 million population by prefectures from week 1 to week 49, 2013 (as of December 11, 2013).

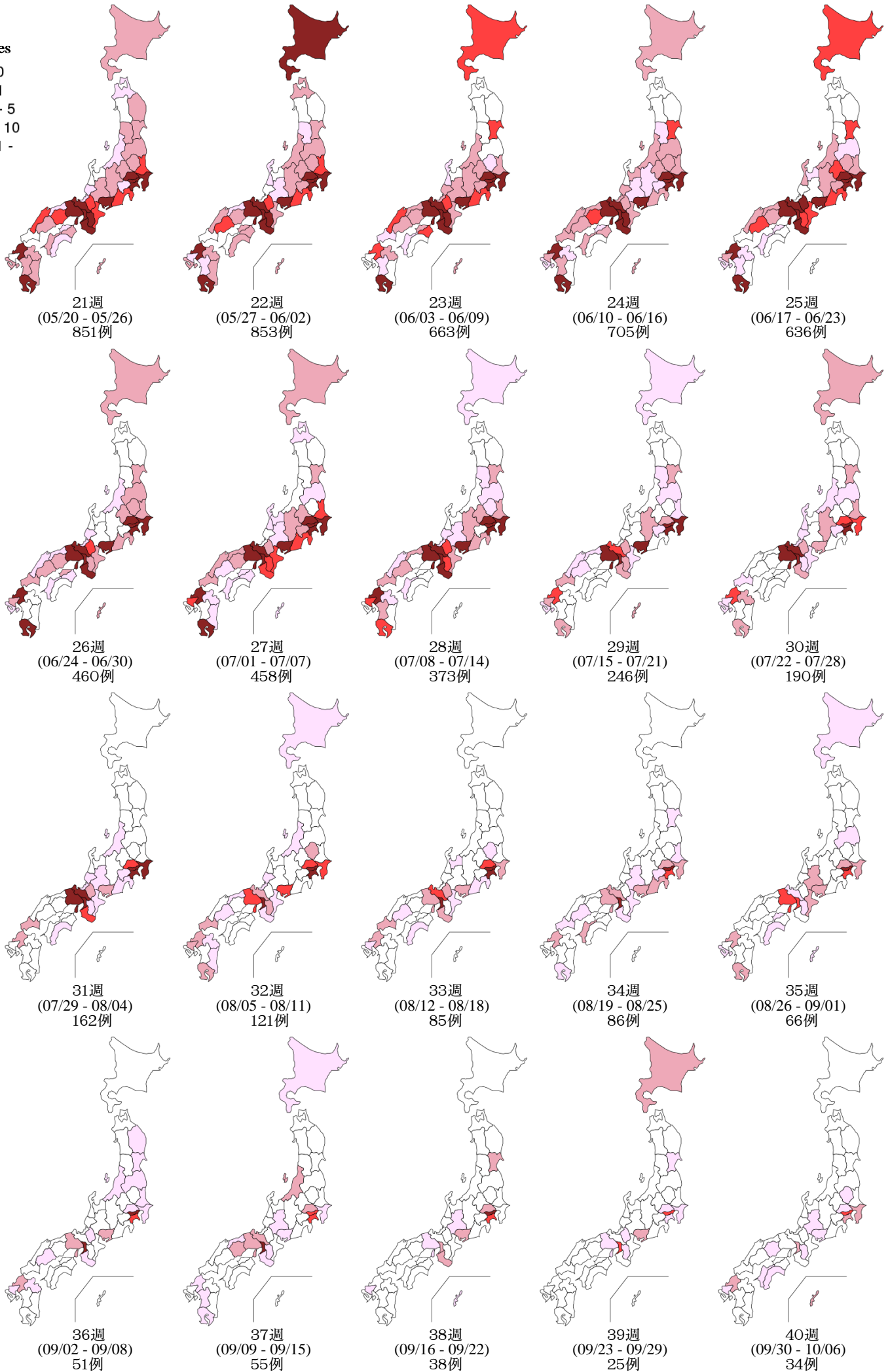
■ <1.0   
 ■ 1.0~4.9   
 ■ 5.0~49.9   
 ■ 50.0~99.9   
 ■ 100.0~199.9   
 ■ ≥200.0



Weekly rubella cases from week 1 to week 49, 2013 (based on diagnosed week as of December 11, 2013)



Weekly rubella cases from week 1 to week 49, 2013 (based on diagnosed week as of December 11, 2013)



9. 都道府県別風しん週別報告状況 2013年 第1~49週 感染症発生動向調査

2013年12月11日現在

Weekly rubella cases from week 1 to week 49, 2013 (based on diagnosed week as of December 11, 2013)

