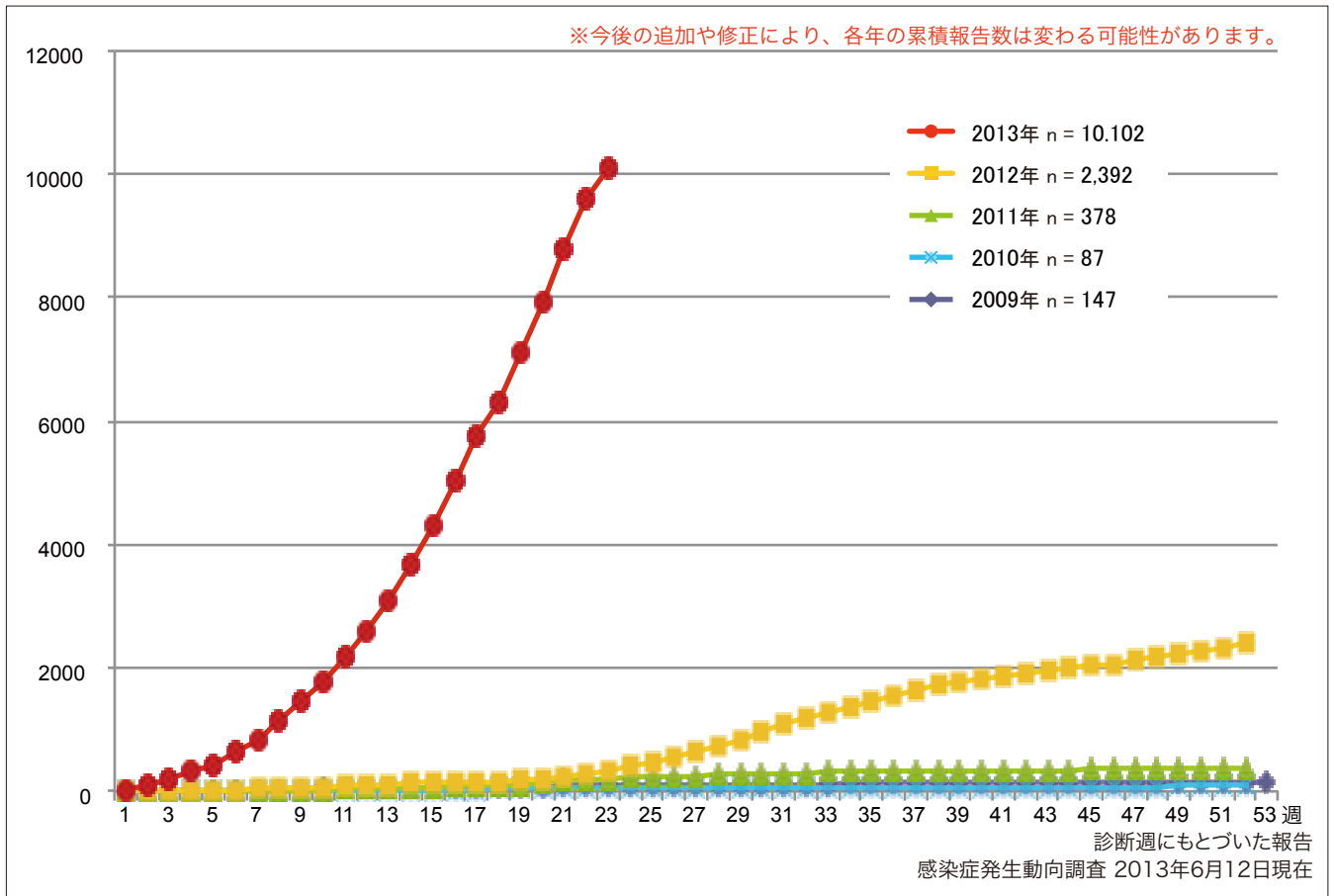


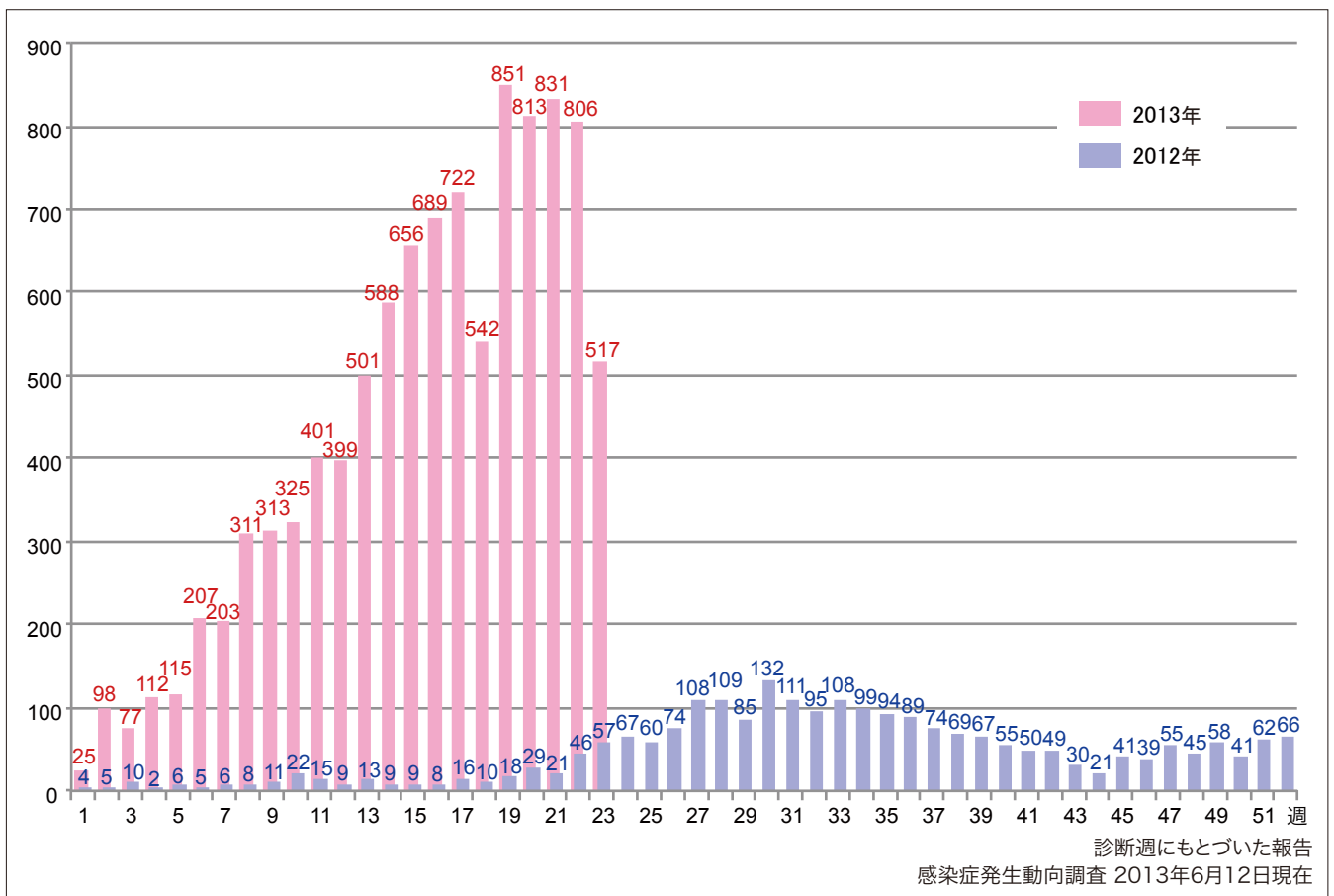
1. 風しん累積報告数の推移2009～2013年（第1～23週）

Cumulative number of rubella cases by week, 2009–2013 (week1–23)  
 (based on diagnosed week as of June 12, 2013).



2. 週別風しん報告数 2013年 第1～23週（n=10,102）

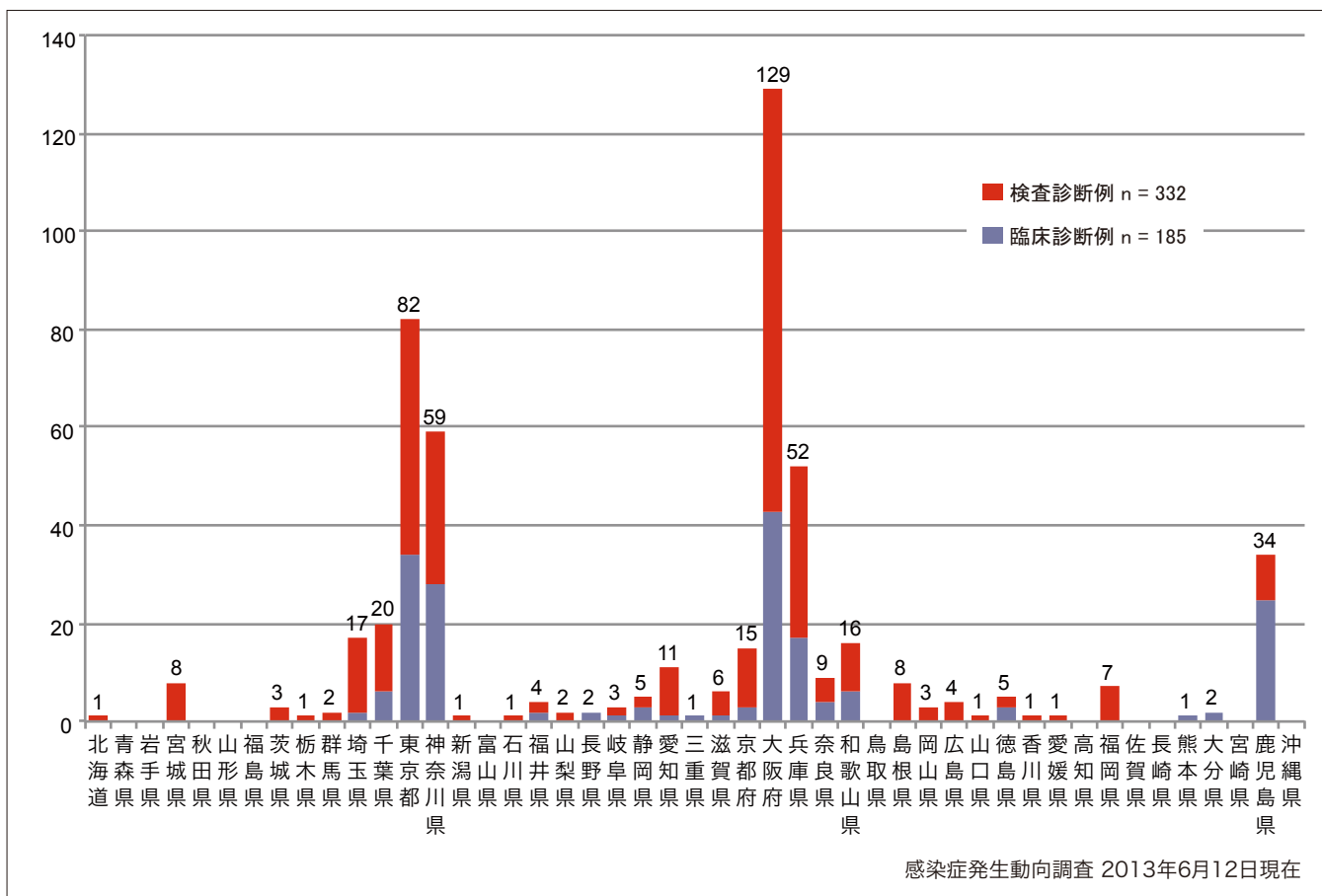
Weekly rubella cases from week 1 to week 23, 2013 (based on diagnosed week as of June 12, 2013).



3. 都道府県別病型別風しん報告数 2013年 第23週 (n=517)

Reported rubella cases by prefecture and methods of diagnosis in week 23, 2013 (as of June 12, 2013).

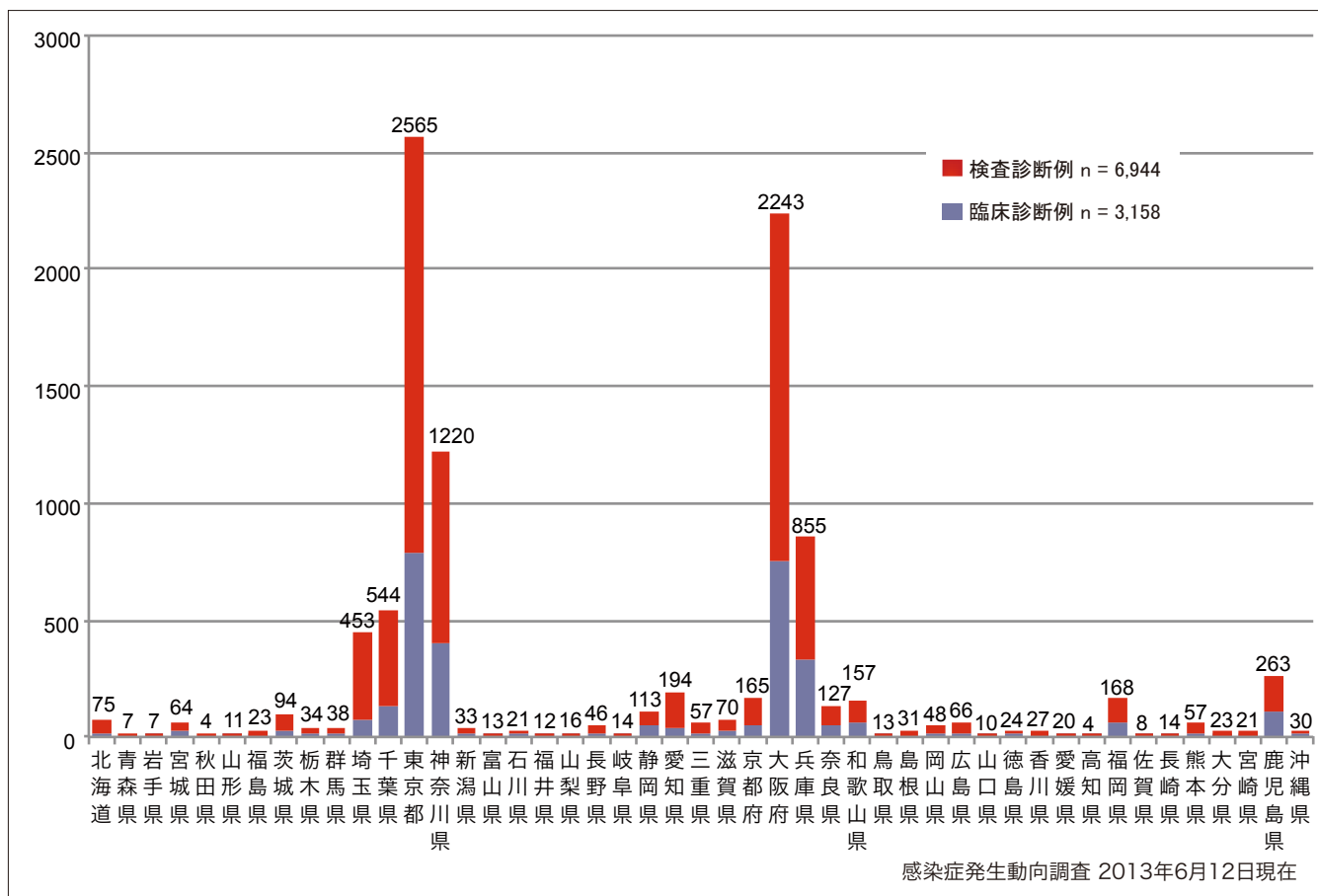
■ Clinically diagnosed ■ Laboratory diagnosed



4. 都道府県別病型別風しん累積報告数 2013年 第1~23週 (n=10,102)

Cumulative rubella cases by prefecture and methods of diagnosis from week 1 to week 23, 2013 (as of June 12, 2013).

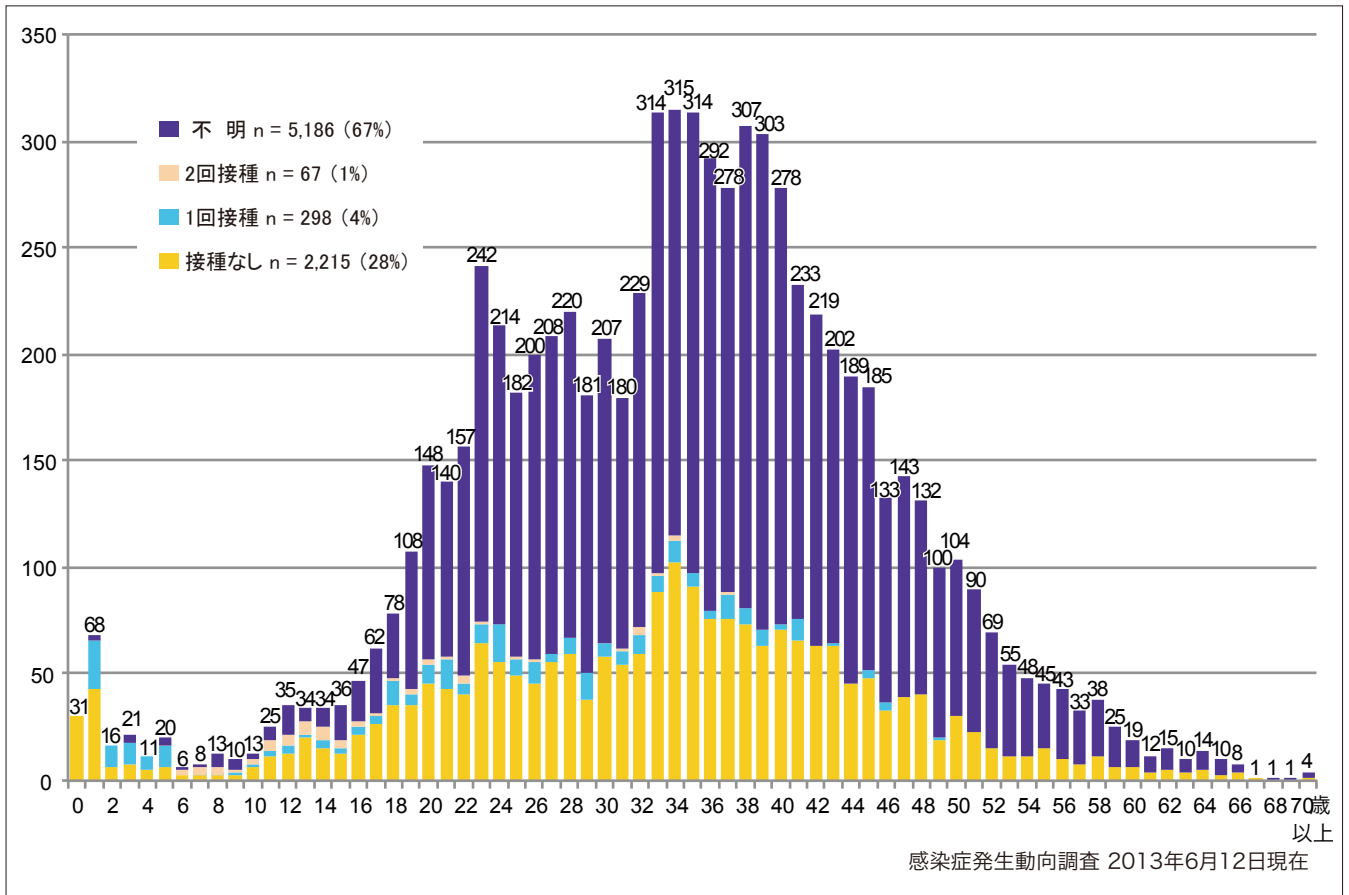
■ Clinically diagnosed ■ Laboratory diagnosed



5-1. 年齢群別接種歴別風しん累積報告数 (男性) 2013年 第1~23週 (n=7,766)

Cumulative rubella cases (male) by age and vaccinated status from week 1 to week 23, 2013 (as of June 12, 2013).

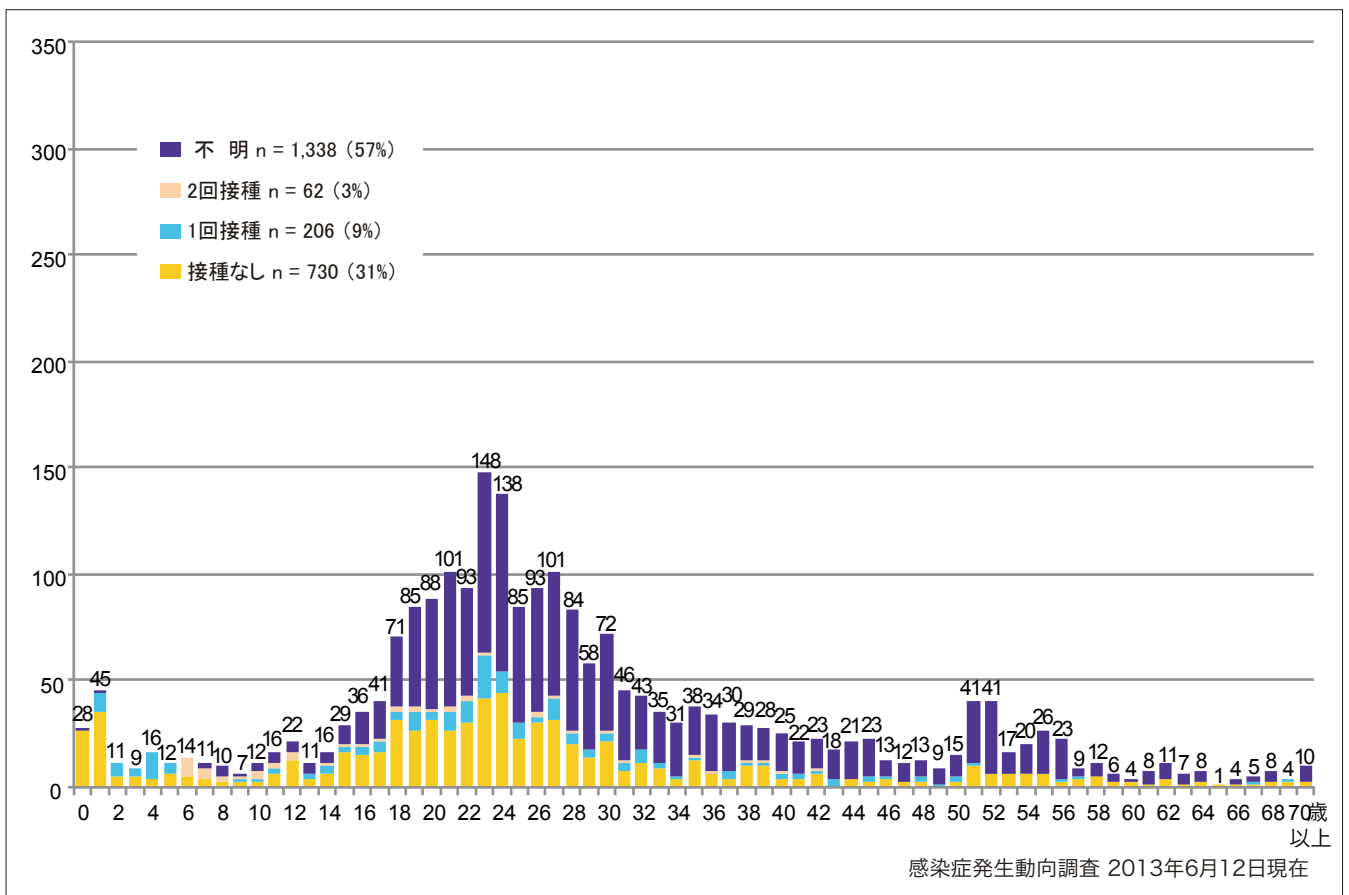
■ None ■ RCV1 ■ RCV2 ■ Unknown



5-2. 年齢群別接種歴別風しん累積報告数 (女性) 2013年 第1~23週 (n=2,336)

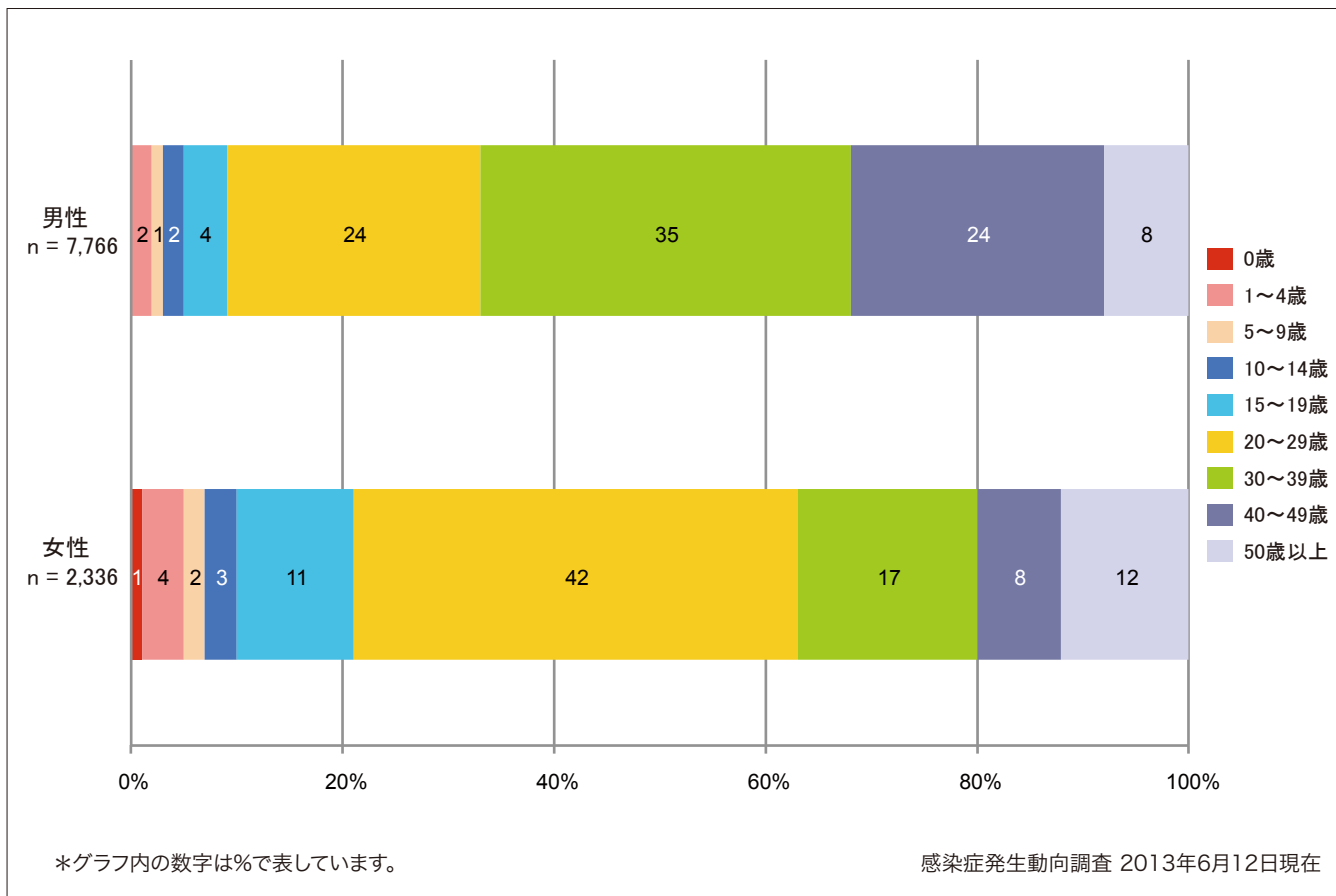
Cumulative rubella cases (female) by age and vaccinated status from week 1 to week 23, 2013 (as of June 12, 2013).

■ None ■ RCV1 ■ RCV2 ■ Unknown



6. 年齢群別風しん累積報告数割合（男女別） 2013年 第1～23週（n=10,102）

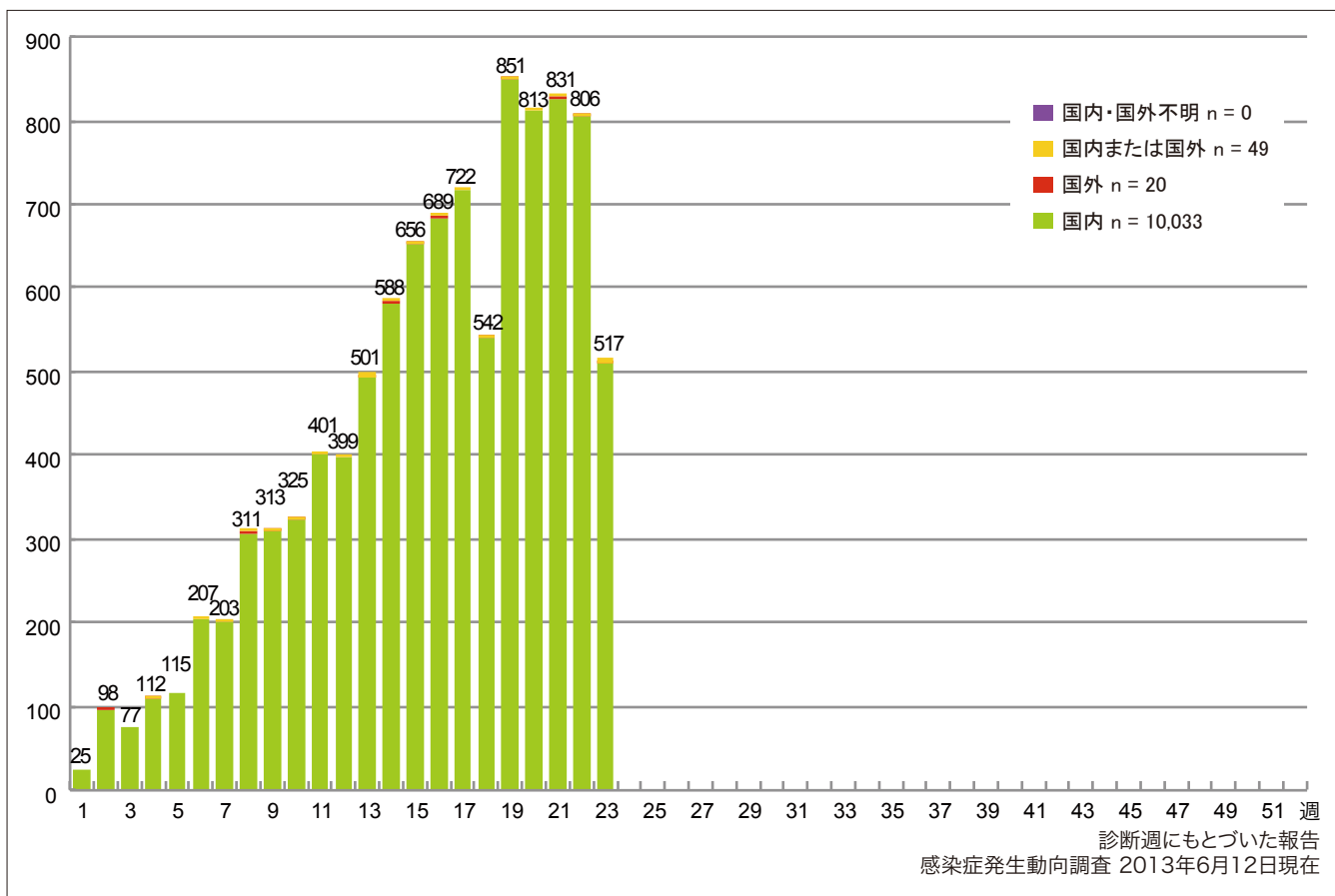
Percentage of cumulative rubella cases (upper: male, bottom: female) by age group from week 1 to week 23, 2013 (as of June 12, 2013).



7. 週別推定感染地域（国内・外）別風しん報告数 2013年 第1～23週（n=10,102）

Weekly rubella cases by acquired region from week 1 to week 23, 2013 (based on diagnosed week as of June 12, 2013).

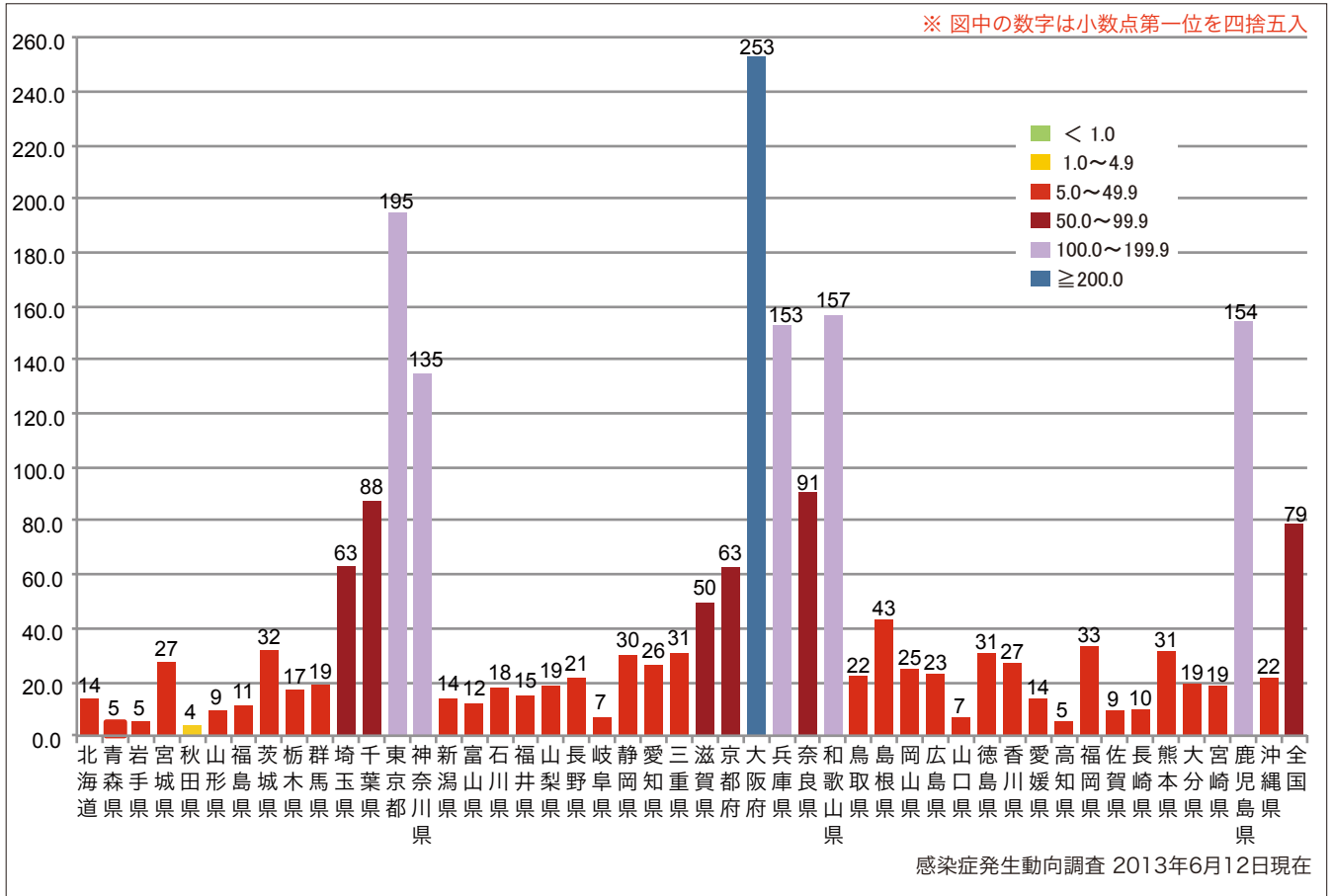
■ Domestic cases ■ Imported cases ■ Unspecified ■ Unknown



8. 都道府県別人口百万人あたり風しん報告数 2013年 第1~23週 (n=10,102)

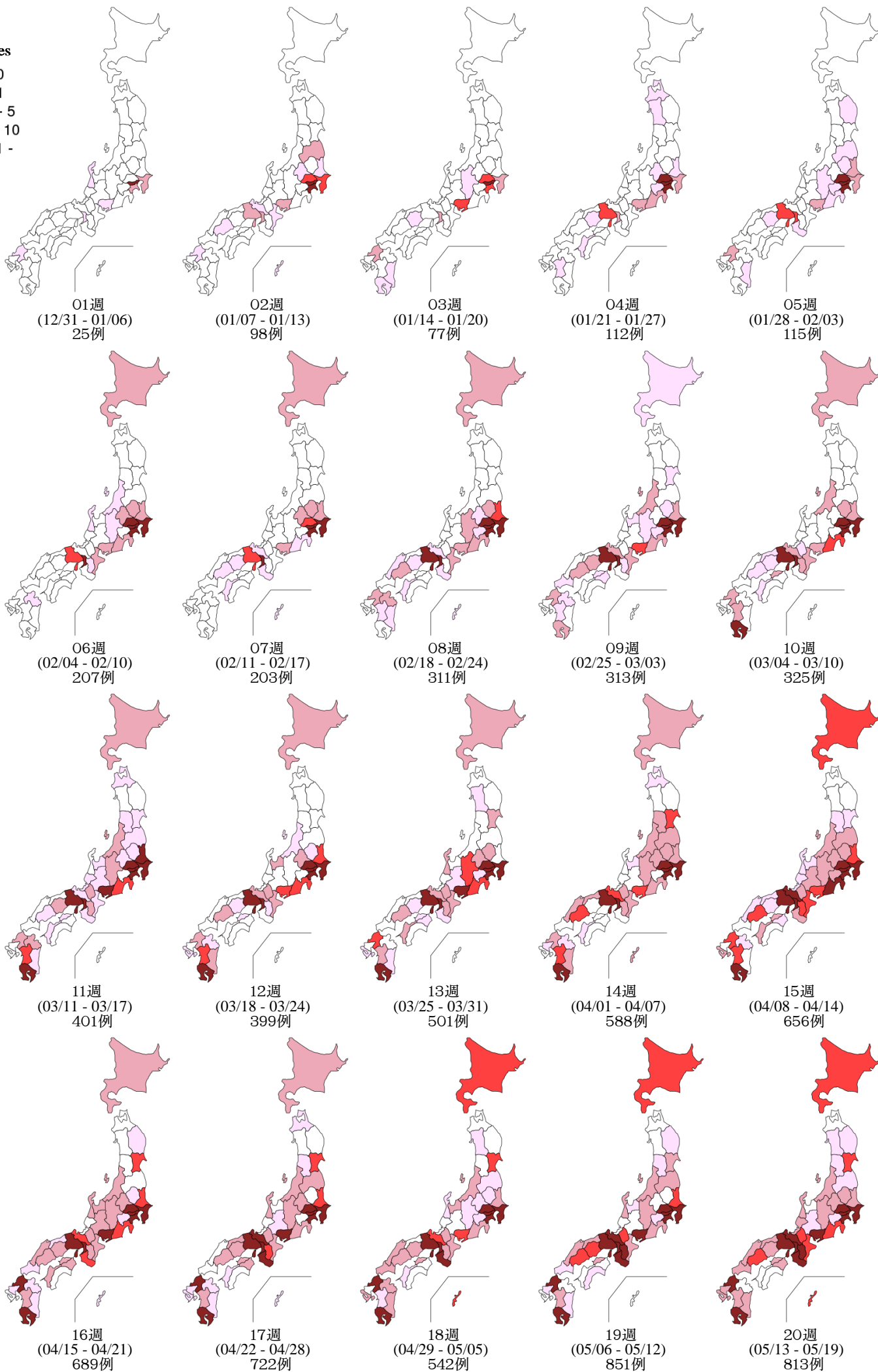
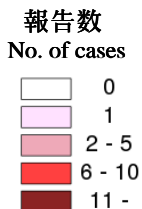
Number of reported cases per 1 million population by prefectures from week 1 to week 23, 2013 (as of June 12, 2013).

■ <1.0  
 ■ 1.0~4.9  
 ■ 5.0~49.9  
 ■ 50.0~99.9  
 ■ 100.0~199.9  
 ■ ≥200.0



9. 都道府県別風しん週別報告状況 2013年 第1~23週 感染症発生動向調査  
 Weekly rubella cases from week 1 to week 23, 2013 (based on diagnosed week as of June 12, 2013)

2013年06月12日現在



9. 都道府県別風しん週別報告状況 2013年 第1~23週 感染症発生動向調査  
Weekly rubella cases from week 1 to week 23, 2013 (based on diagnosed week as of June 12, 2013)

2013年06月12日現在

