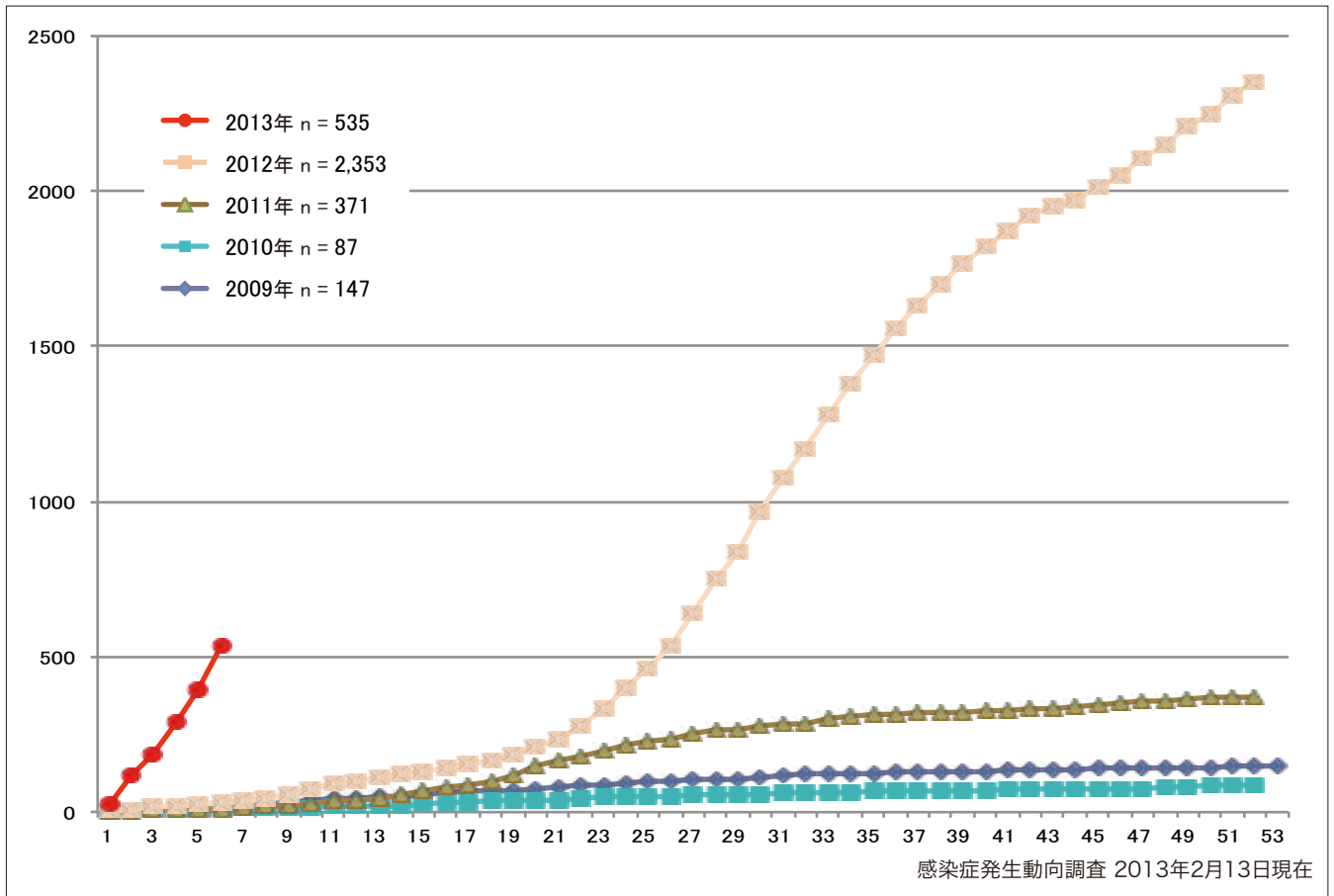


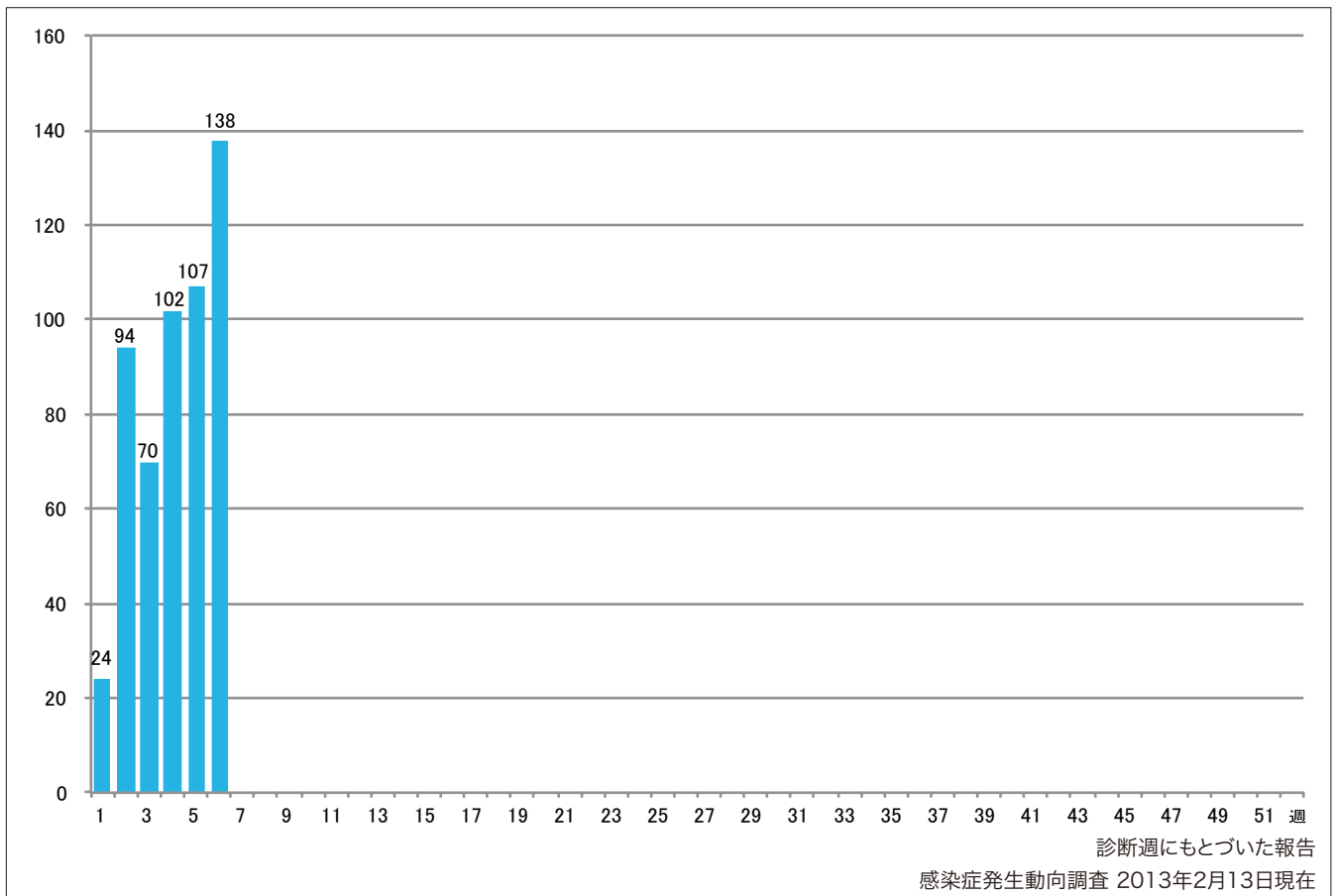
1. 風しん累積報告数の推移2008～2013年（第1～6週）

Cumulative number of rubella cases by week, 2008-2013 (week1-6)
 (based on diagnosed week as of February 13, 2013).



2. 週別風しん報告数 2013年 第1～6週（n=535）

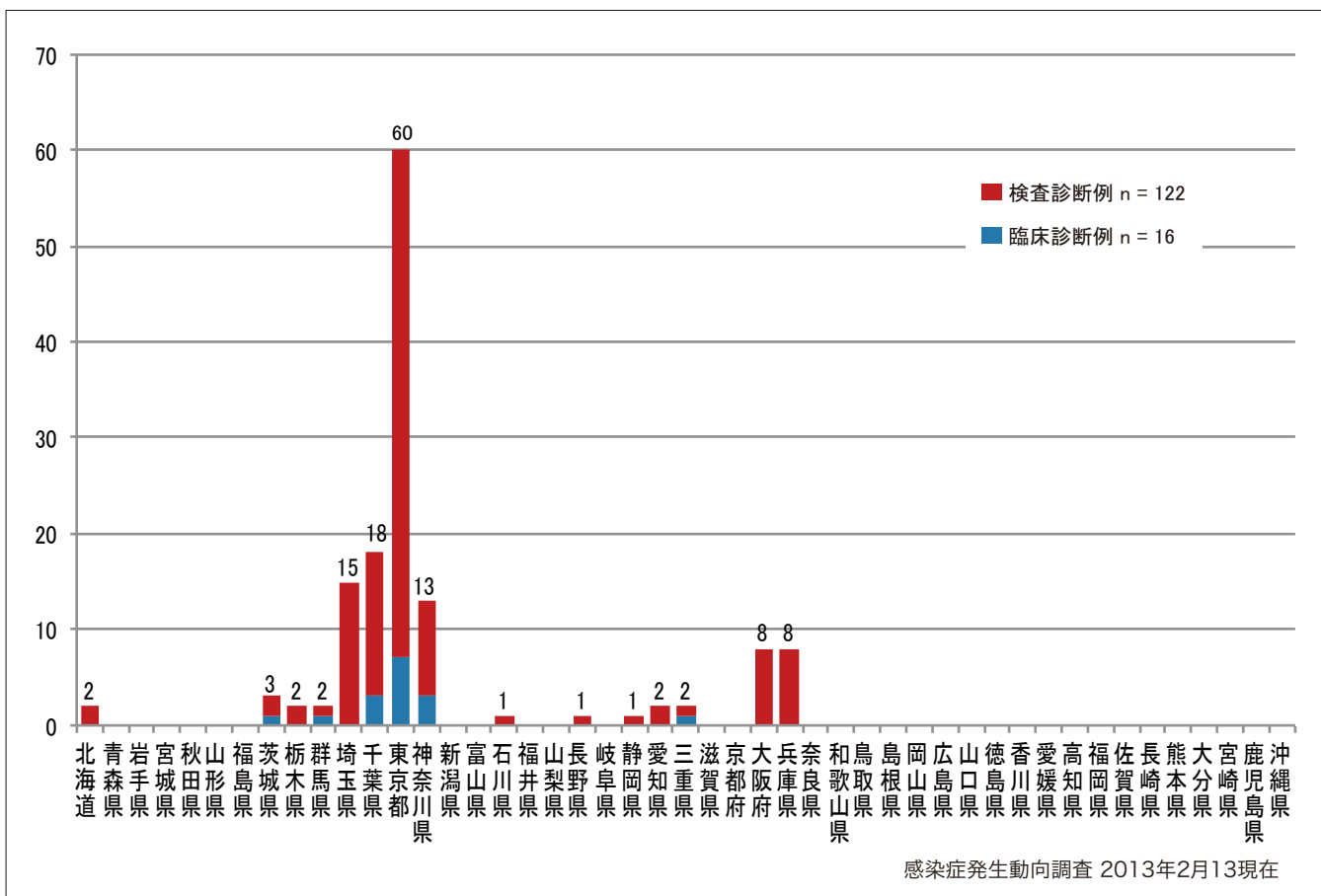
Weekly rubella cases from week 1 to week 6, 2013 (based on diagnosed week as of February 13, 2013).



3. 都道府県別病型別風しん報告数 2013年 第6週 (n=138)

Reported rubella cases by prefecture and methods of diagnosis in week 6, 2013 (as of February 13, 2013).

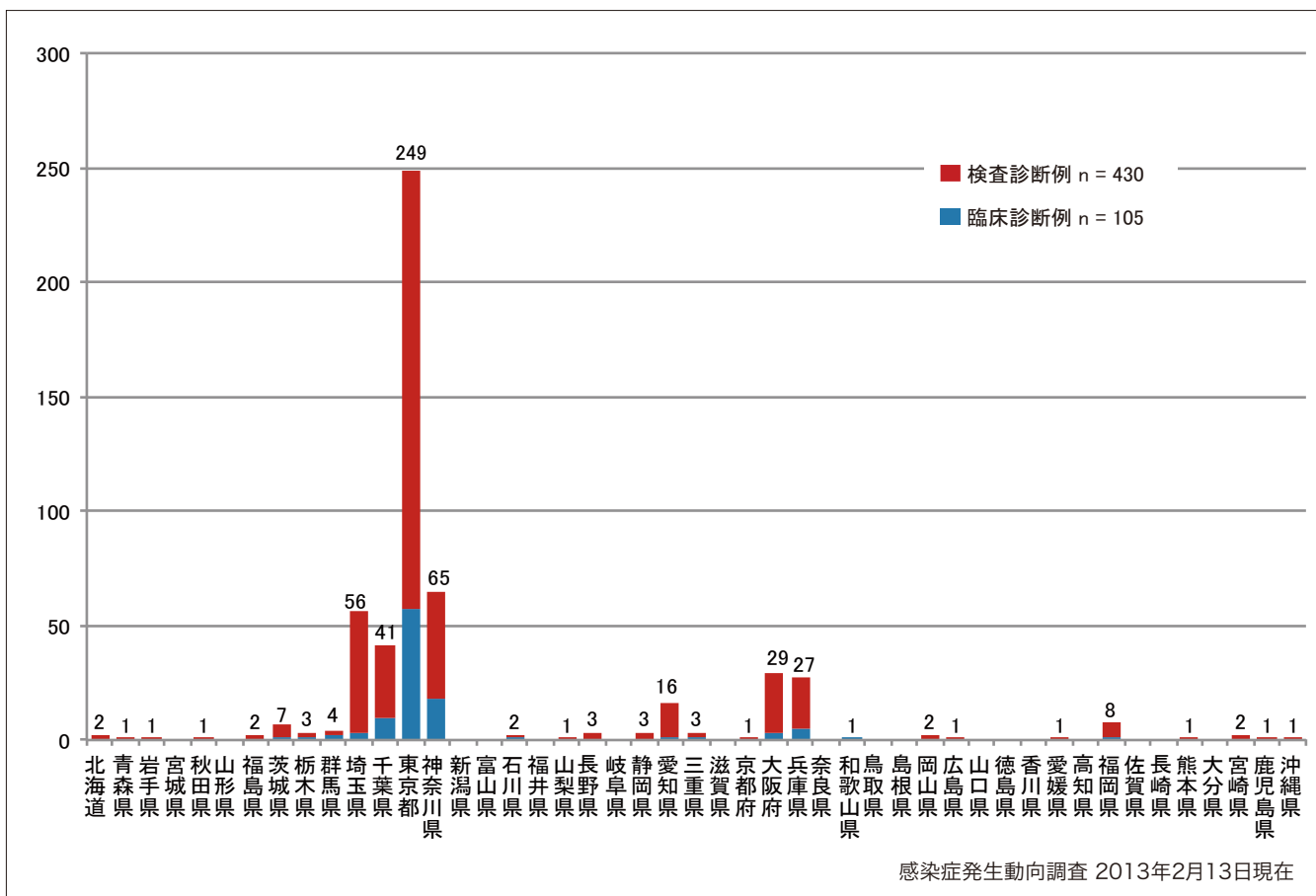
■ Clinically diagnosed ■ Laboratory diagnosed



4. 都道府県別病型別風しん累積報告数 2013年 第1~6週 (n=535)

Cumulative rubella cases by prefecture and methods of diagnosis from week 1 to week 6, 2013 (as of February 13, 2013).

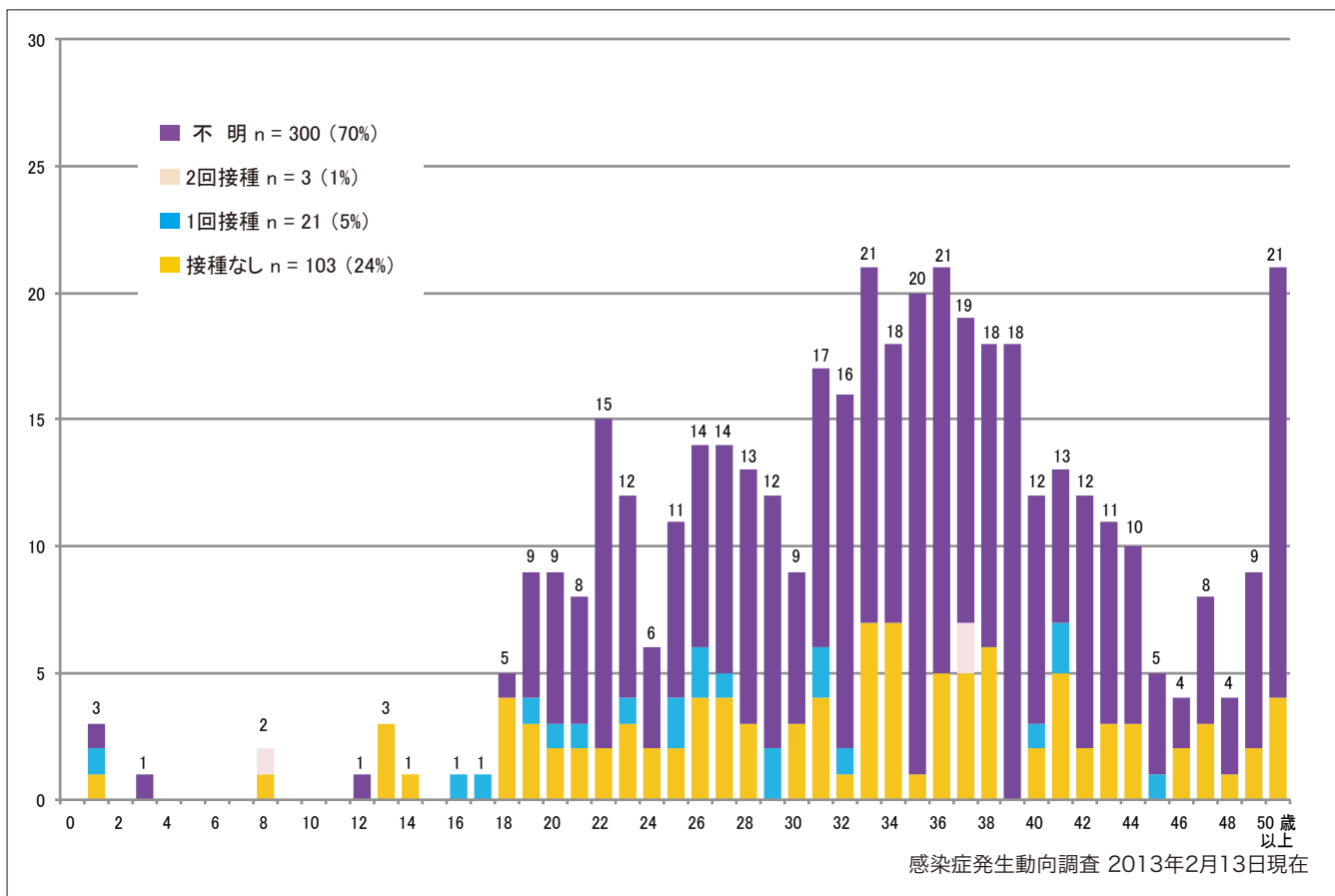
■ Clinically diagnosed ■ Laboratory diagnosed



5-1. 年齢群別接種歴別風しん累積報告数 (男性) 2013年 第1~6週 (n=427)

Cumulative rubella cases (male) by age and vaccinated status from week 1 to week 6, 2013 (as of February 13, 2013).

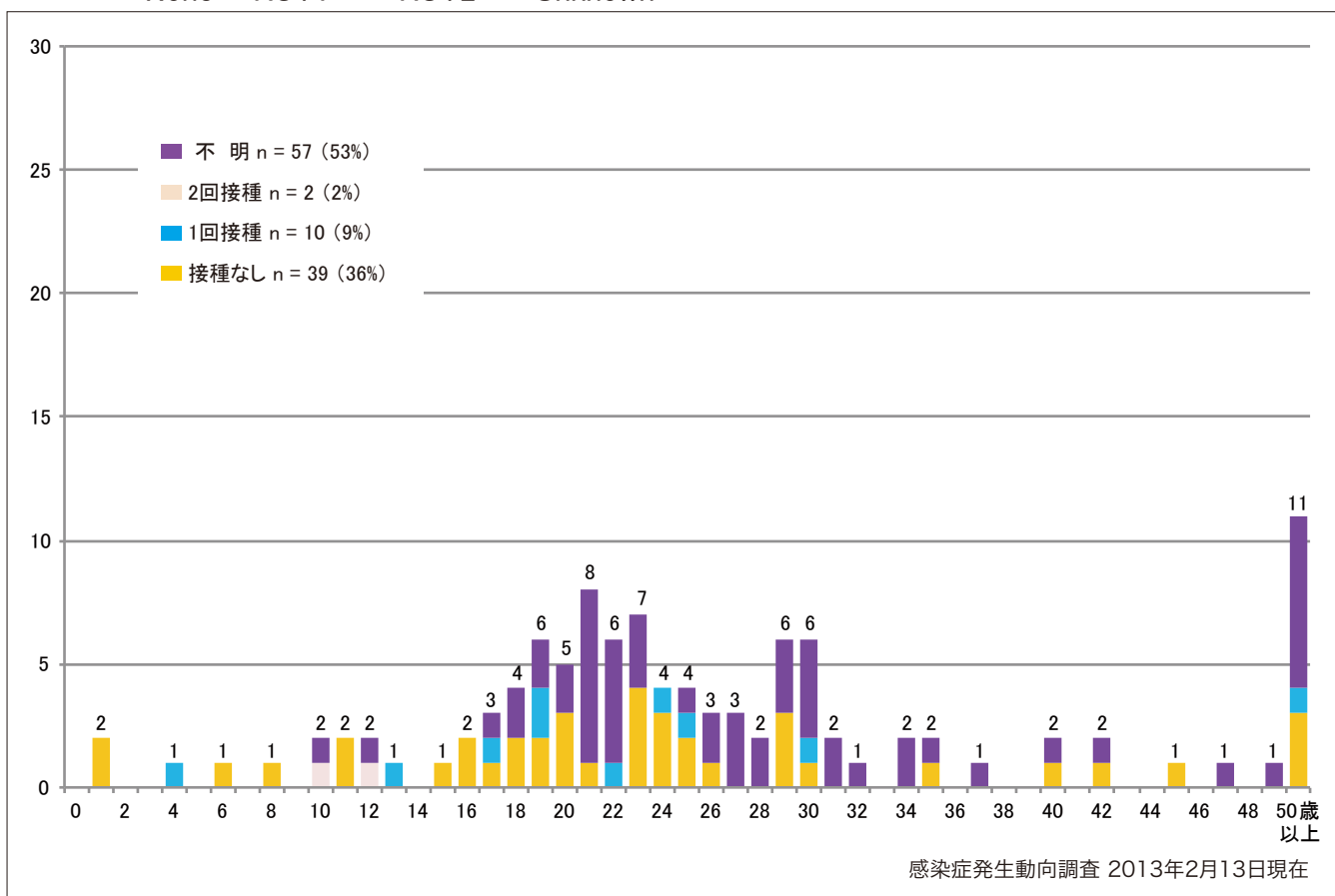
■ None ■ RCV1 ■ RCV2 ■ Unknown



5-2. 年齢群別接種歴別風しん累積報告数 (女性) 2013年 第1~6週 (n=108)

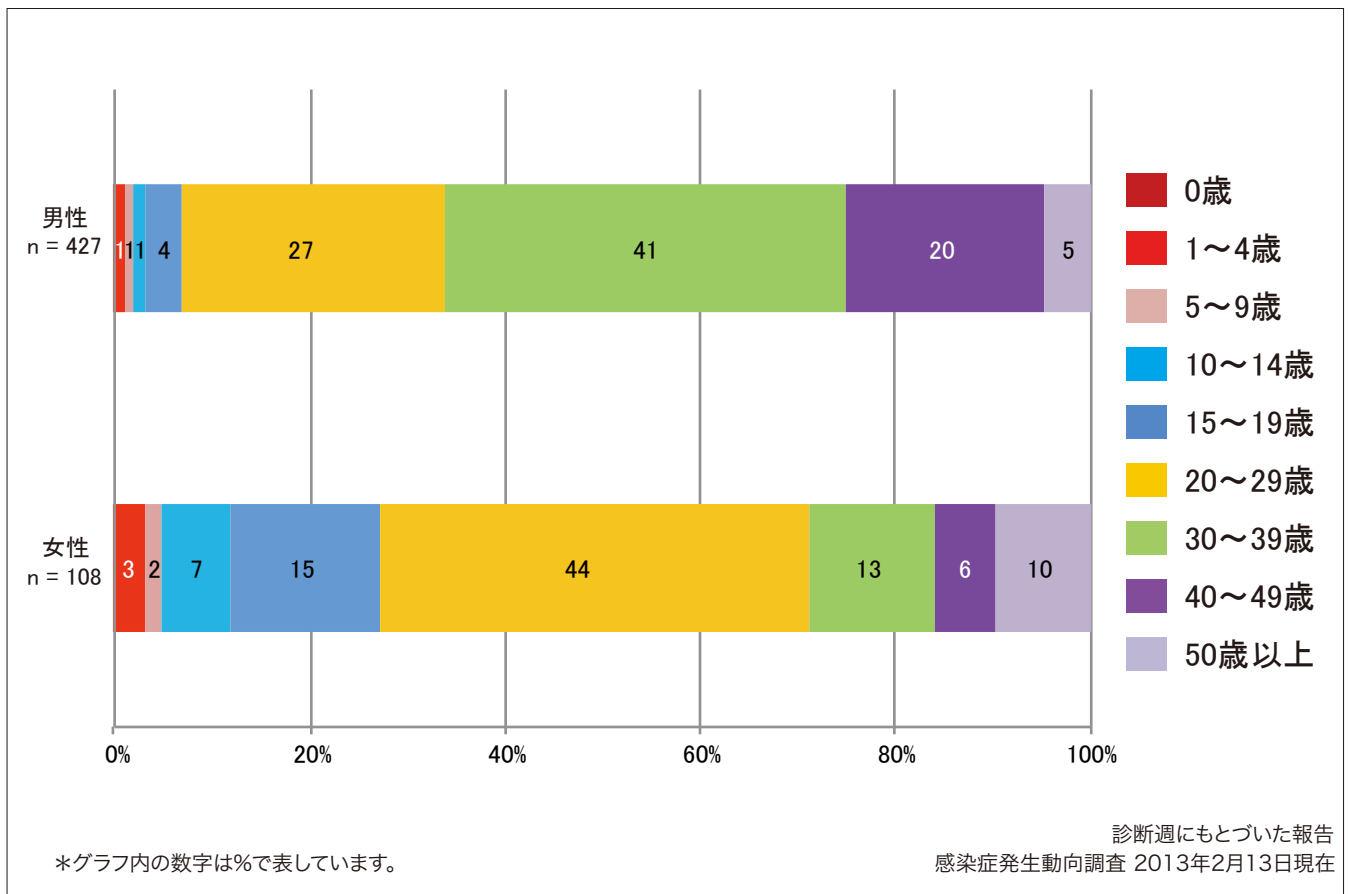
Cumulative rubella cases (female) by age and vaccinated status from week 1 to week 6, 2013 (as of February 13, 2013).

■ None ■ RCV1 ■ RCV2 ■ Unknown



6. 年齢群別風しん累積報告数割合（男女別） 2013年 第1～6週（n=535）

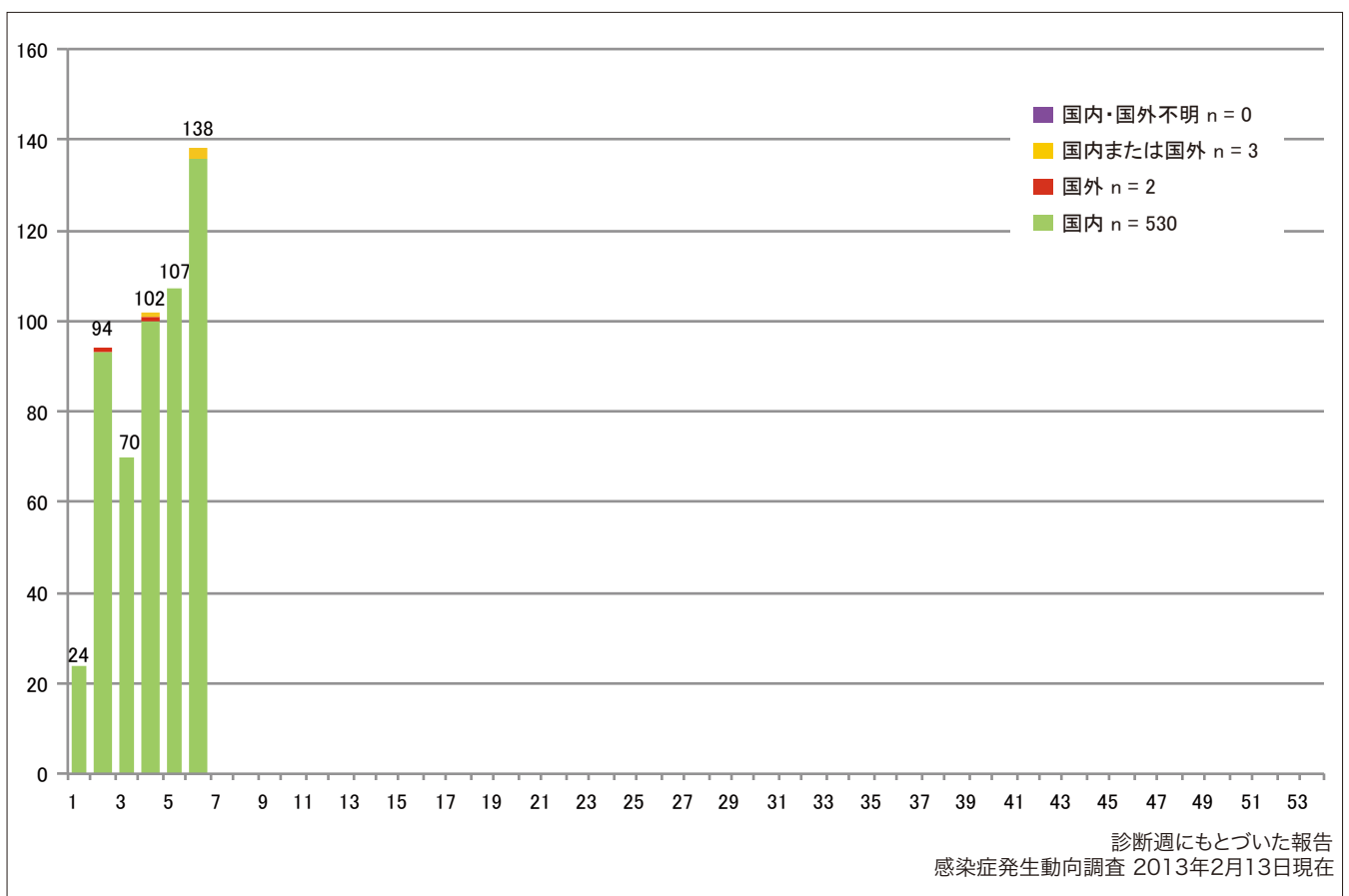
Percentage of cumulative rubella cases (upper: male, bottom: female) by age group from week 1 to week 6, 2013 (as of February 13, 2013).



7. 週別推定感染地域（国内・外）別風しん報告数 2013年 第1～6週（n=535）

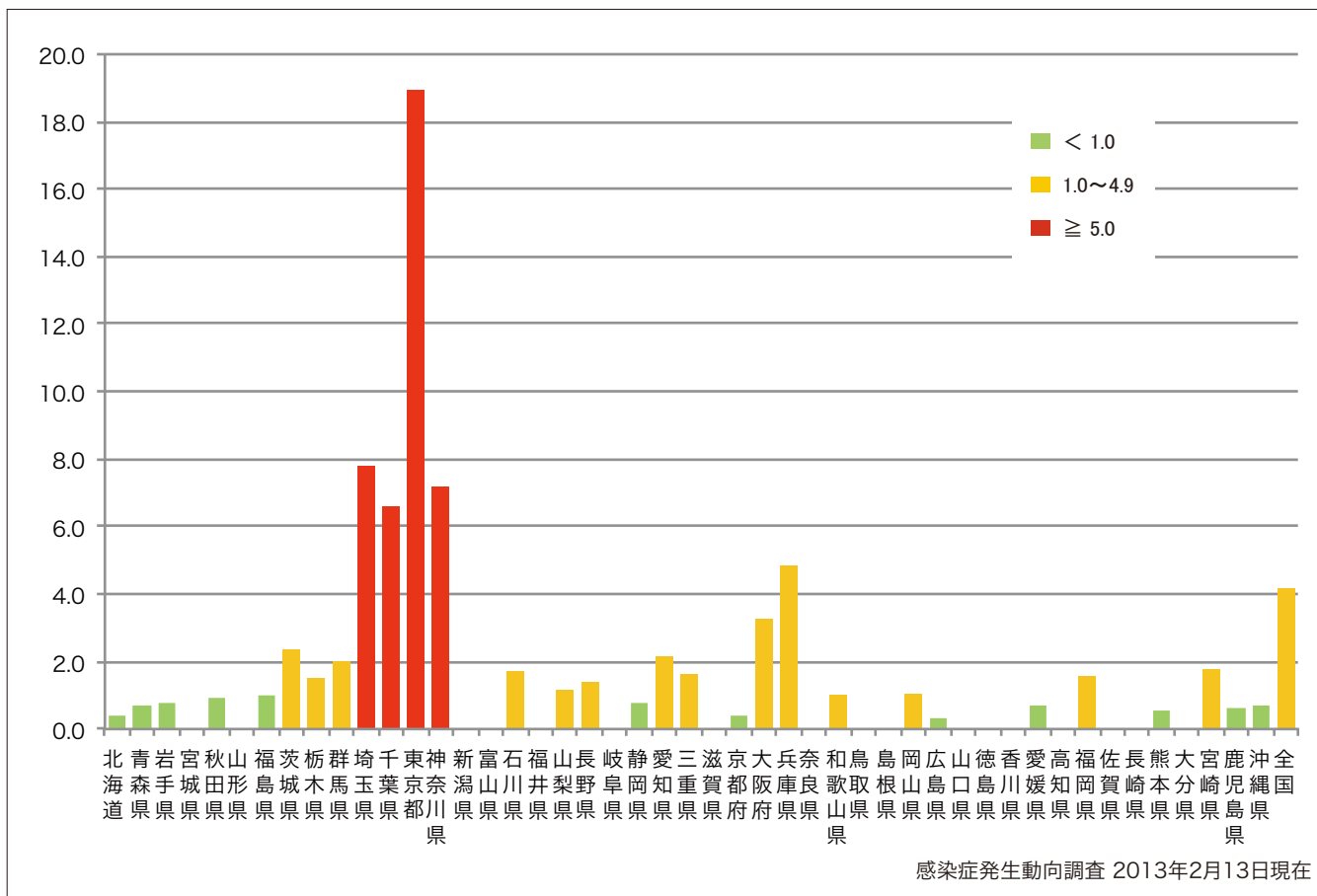
Weekly rubella cases by acquired region from week 1 to week 6, 2013 (based on diagnosed week as of February 13, 2013).

Domestic cases Imported cases Unspecified Unknown



8. 都道府県別人口百万人あたり風しん報告数 2013年第1～6週 (n=535)
 Number of reported cases per 1 million population by prefectures from week 1 to week 6, 2013
 (as of February 13, 2013).

■ <1.0 ■ 1.0～4.9 ■ ≥ 5.0



9. 都道府県別風しん週別報告状況 2013年 第1~06週 感染症発生動向調査

2013年02月13日現在

Weekly rubella cases from week 1 to week 06, 2013 (based on diagnosed week as of February 13, 2013)

