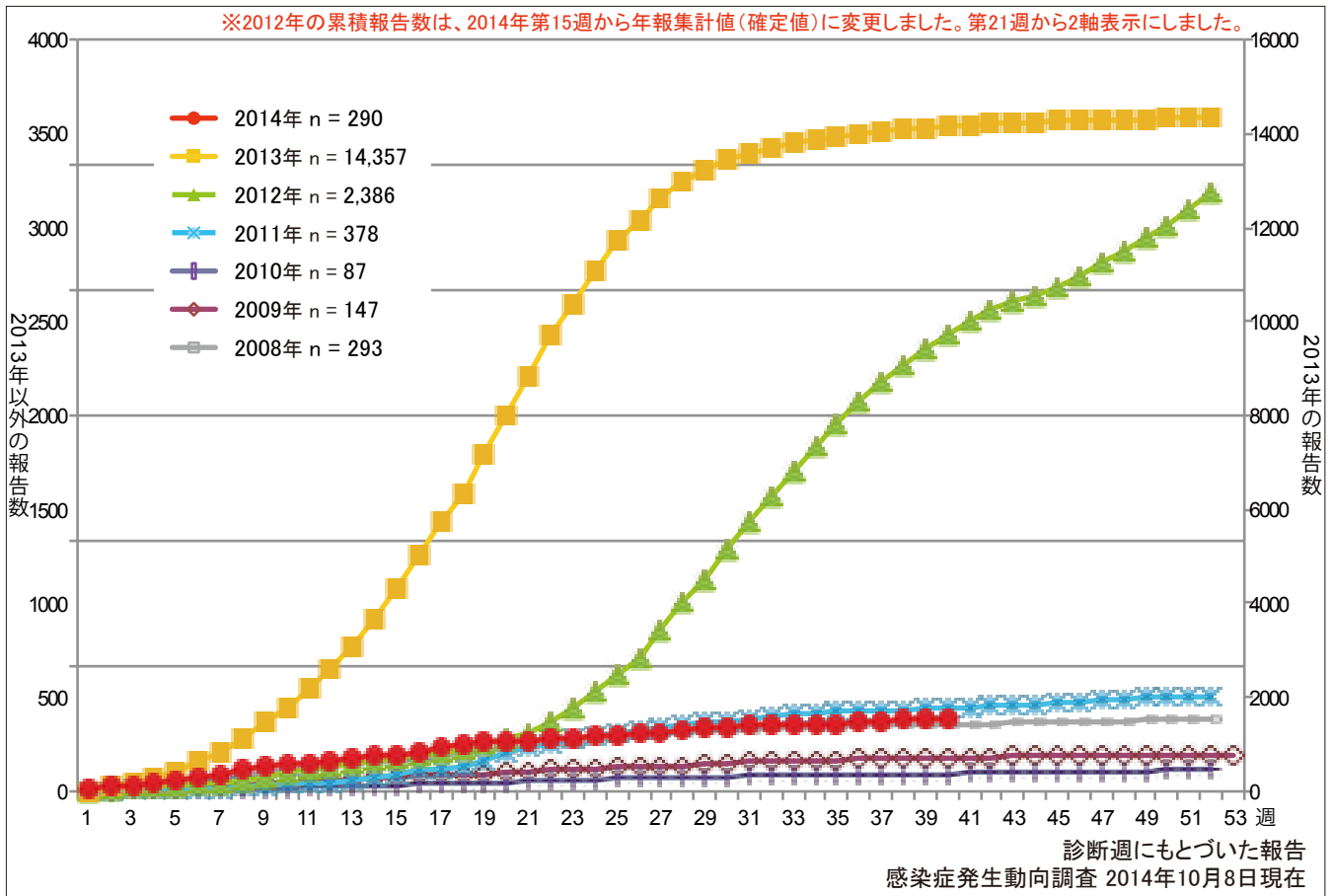


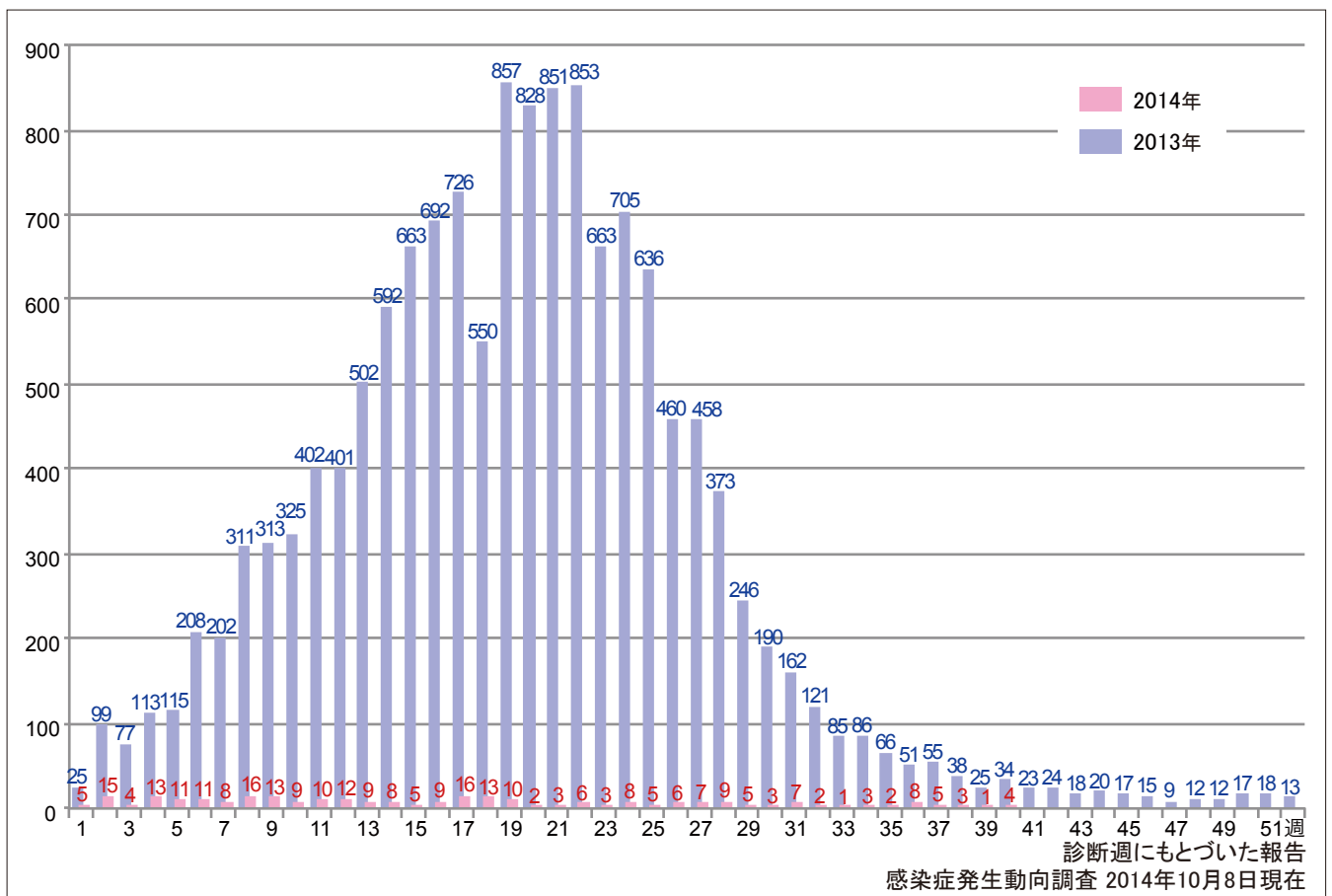
1. 風しん累積報告数の推移 2008～2014年(第1～40週)

Cumulative number of rubella cases by week, 2008-2014 (week1-40)
(based on diagnosed week as of October 8, 2014).



2. 週別風しん報告数 2014年 第1～40週(n=290)

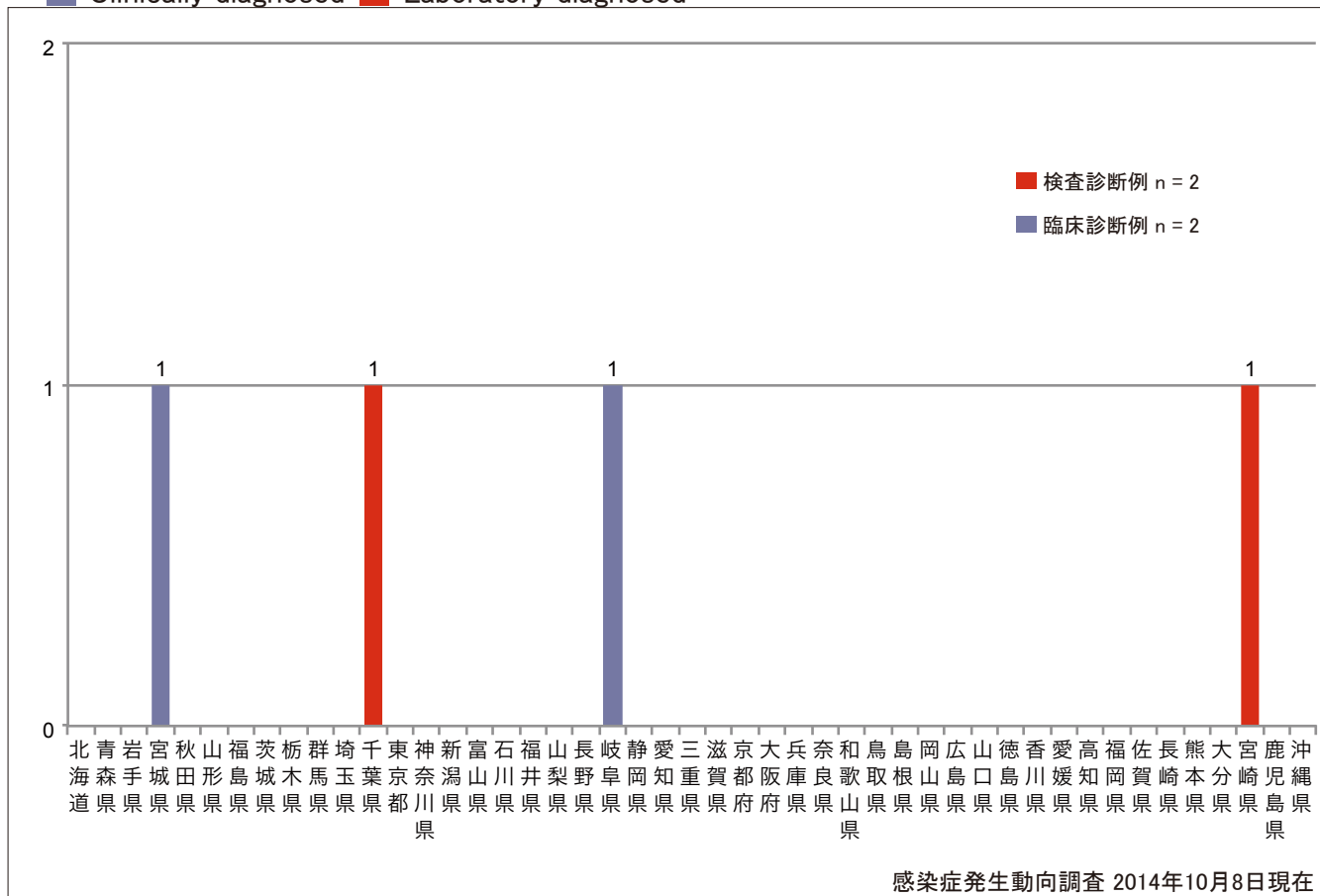
Weekly rubella cases from week 1 to week 40, 2014 (based on diagnosed week as of October 8, 2014).



3. 都道府県別病型別風しん報告数 2014年 第40週 (n=4)

Reported rubella cases by prefecture and methods of diagnosis in week 40, 2014 (as of October 8, 2014).

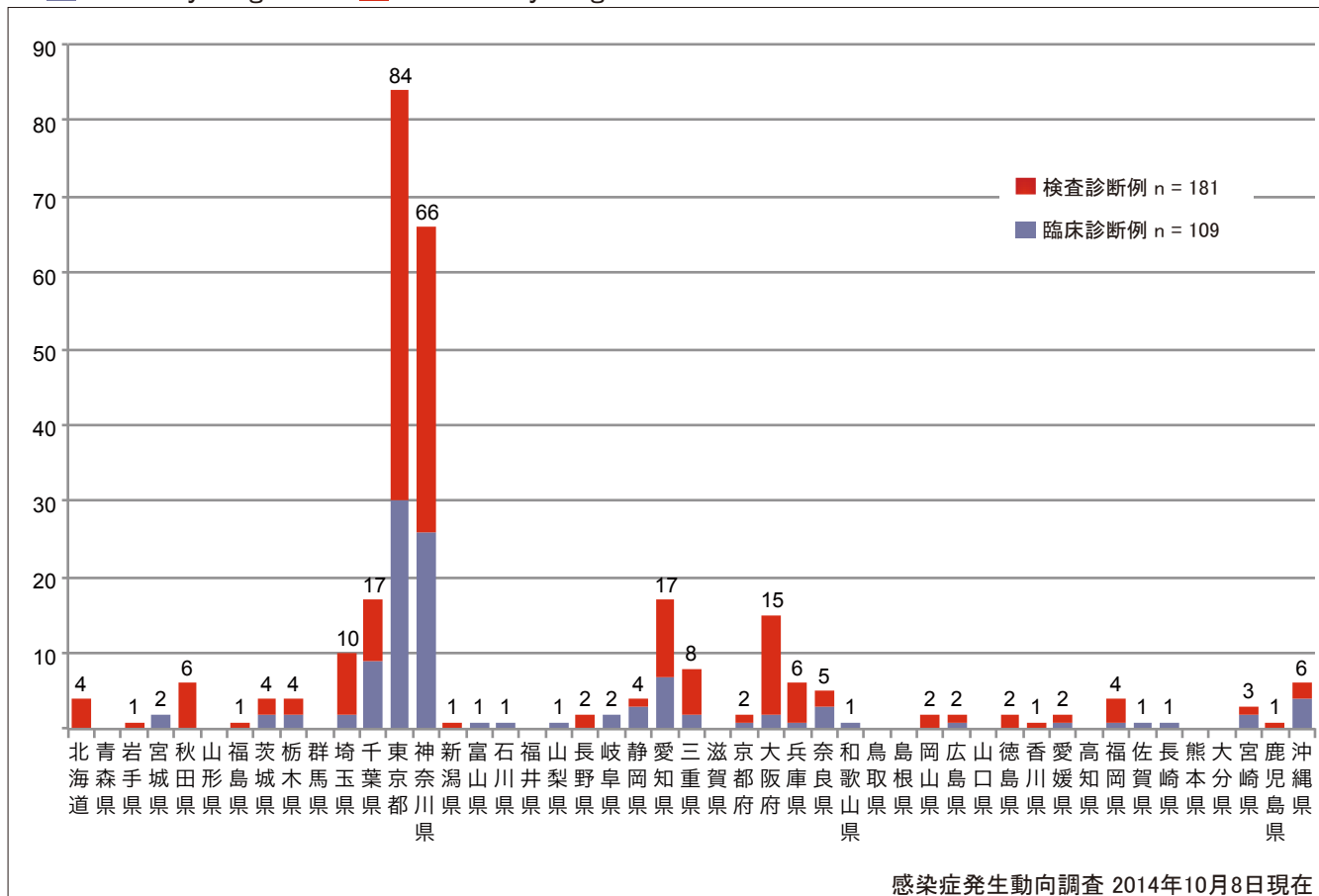
■ Clinically diagnosed ■ Laboratory diagnosed



4. 都道府県別病型別風しん累積報告数 2014年 第40週 (n=290)

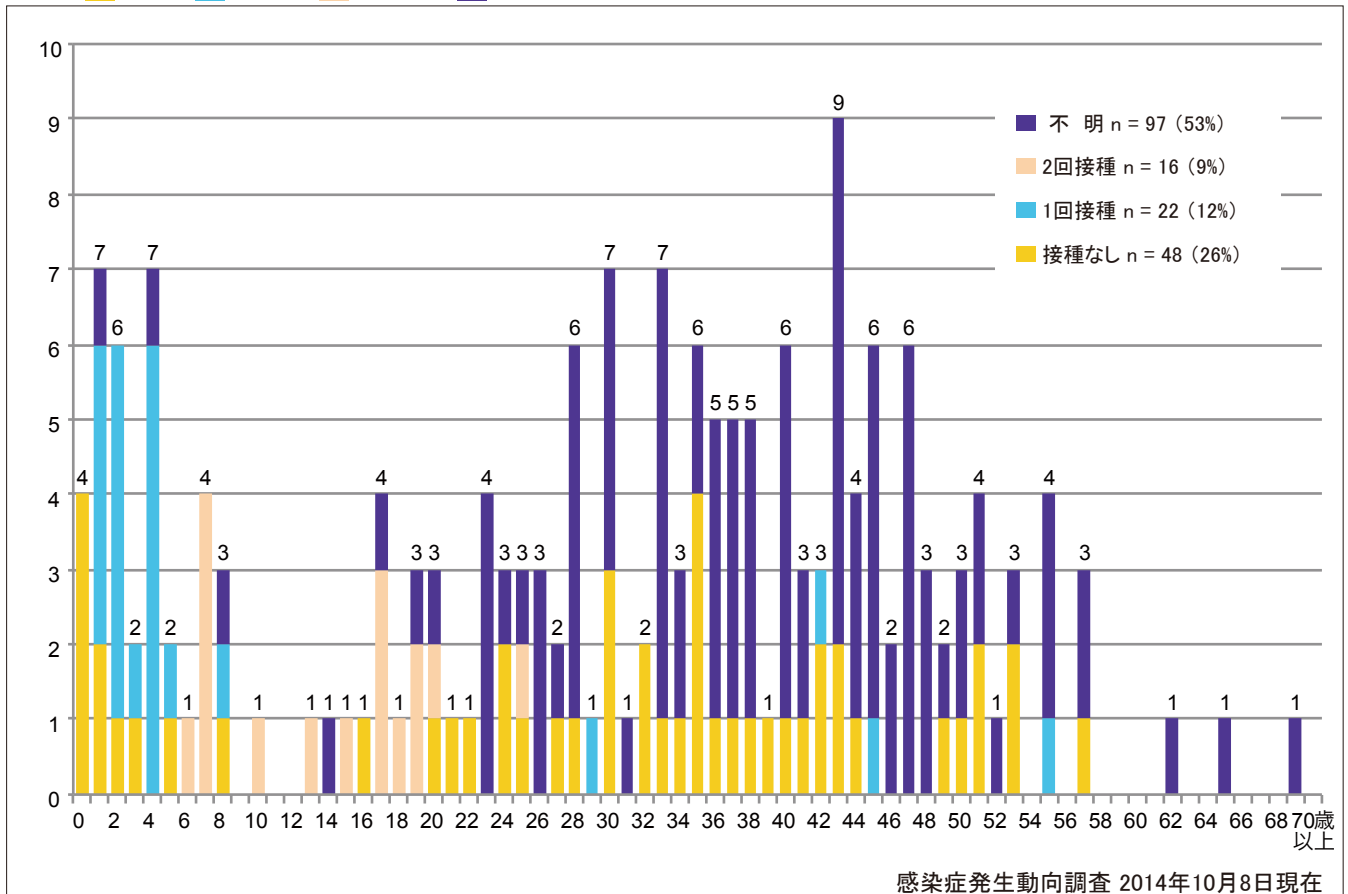
Cumulative rubella cases by prefecture and methods of diagnosis from week 1 to week 40, 2014 (as of October 8, 2014).

■ Clinically diagnosed ■ Laboratory diagnosed



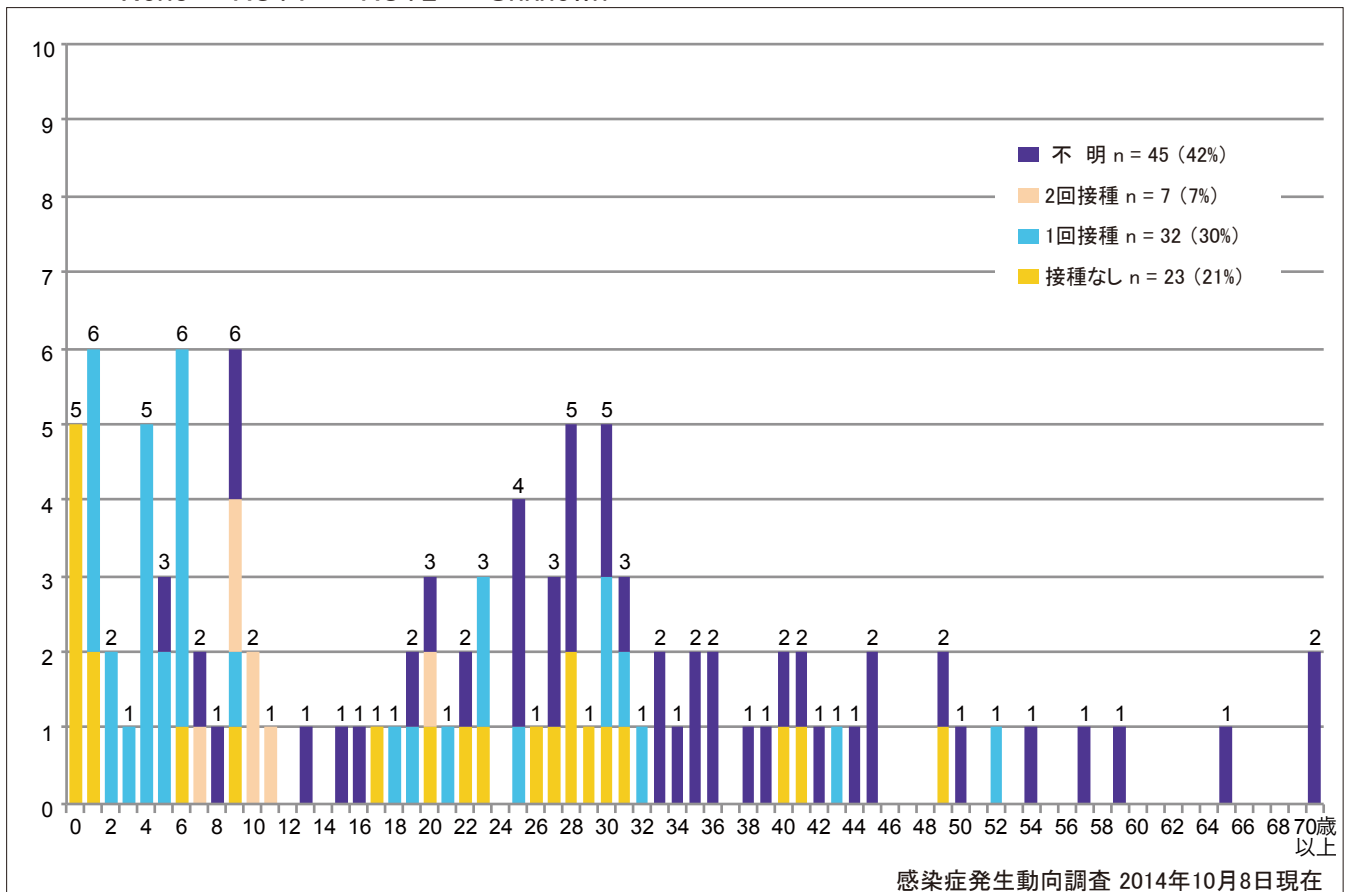
5-1. 年齢群別接種歴別風しん累積報告数(男性) 2014年 第1~40週 (n=183)
 Cumulative rubella cases (male) by age and vaccinated status from week 1 to week 40, 2014 (as of October 8, 2014).

■ None ■ RCV1 ■ RCV2 ■ Unknown



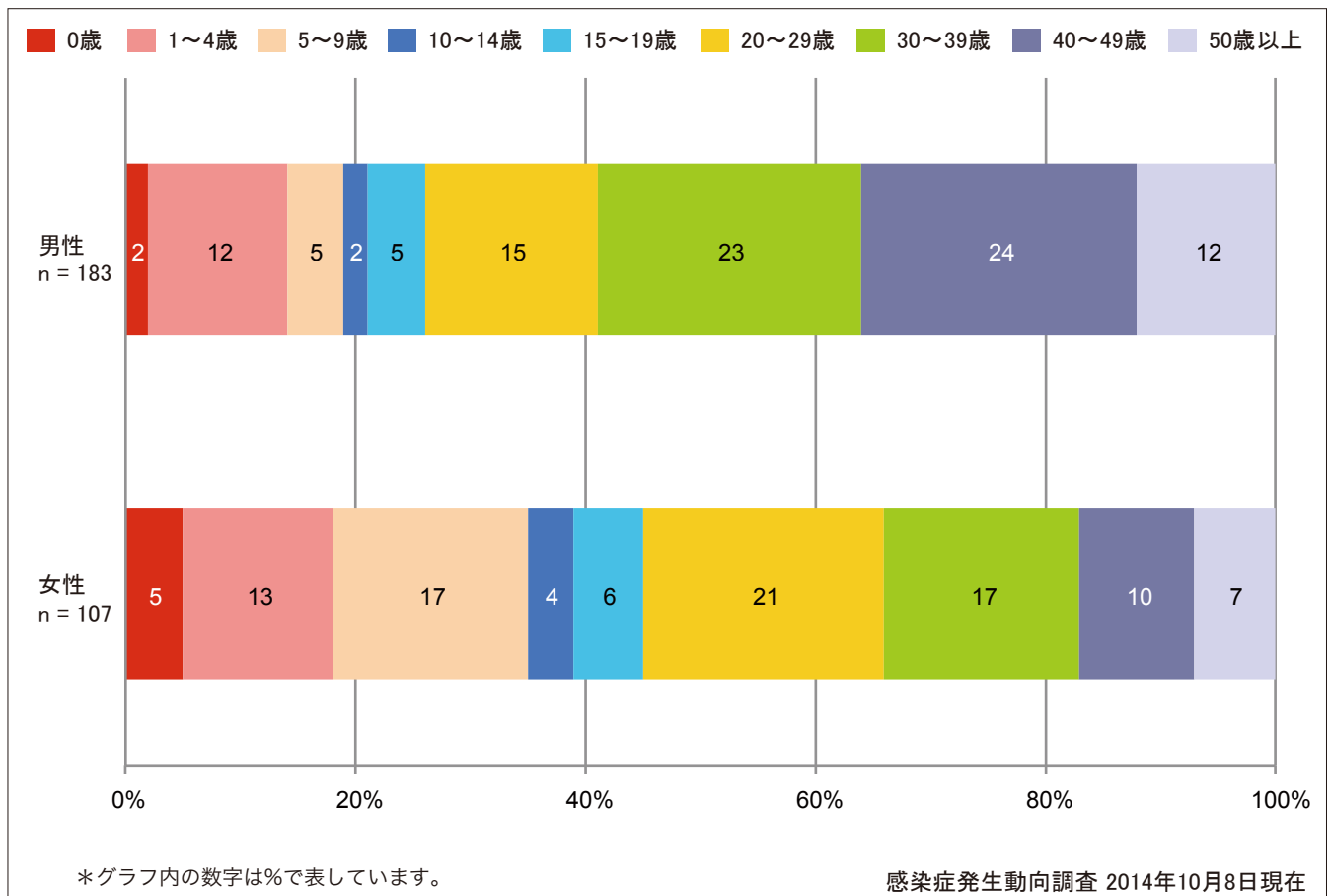
5-2. 年齢群別接種歴別風しん累積報告数(女性) 2014年 第1~40週 (n=107)
 Cumulative rubella cases (female) by age and vaccinated status from week 1 to week 40, 2014 (as of October 8, 2014).

■ None ■ RCV1 ■ RCV2 ■ Unknown



6. 年齢群別風しん累積報告数割合(男女別) 2014年 第1~40週 (n=290)

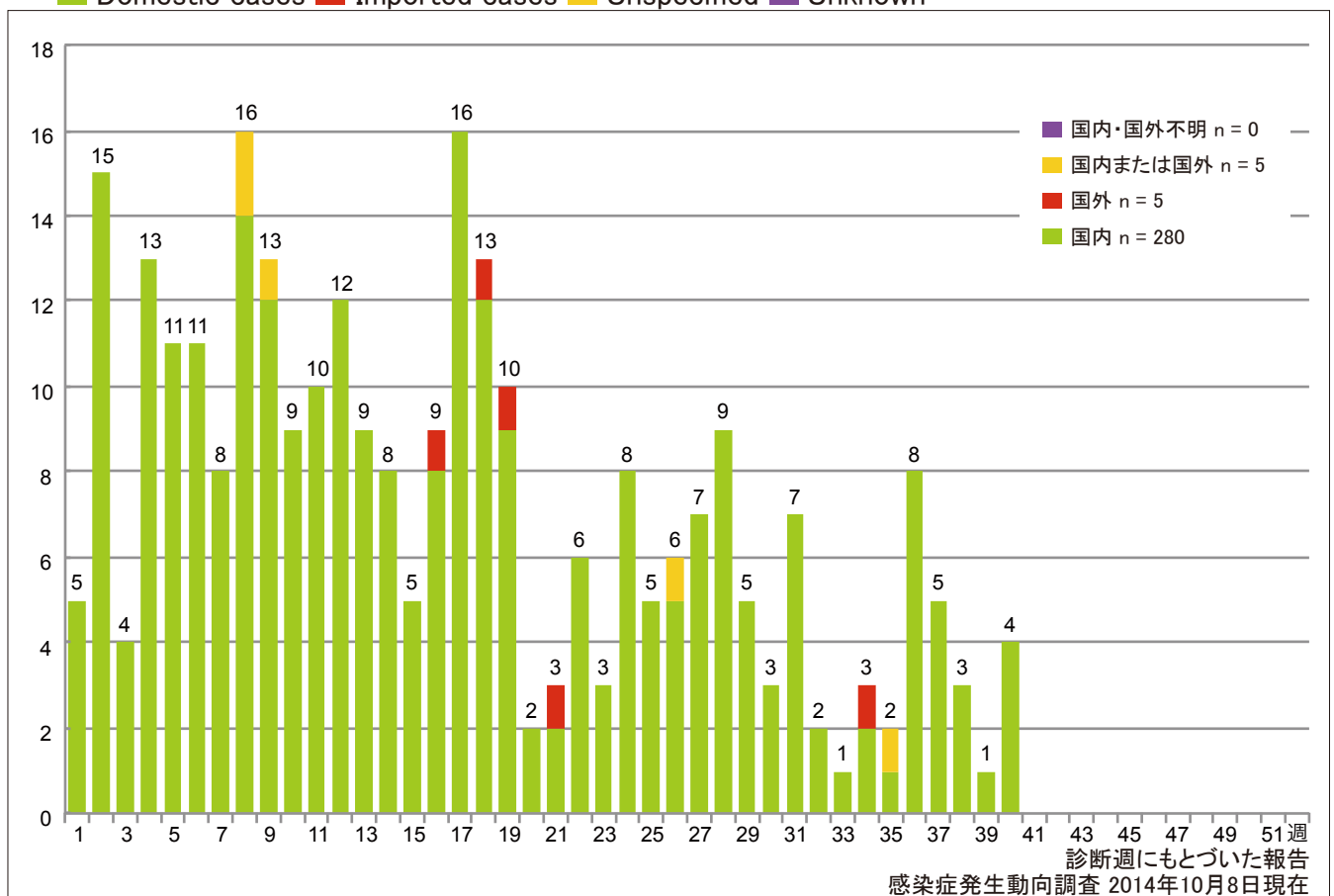
Percentage of cumulative rubella cases (upper: male, bottom: female) by age group from week 1 to week 40, 2014 (as of October 8, 2014).



7. 週別推定感染地域(国内・外)別風しん報告数 2014年 第1~40週 (n=290)

Weekly rubella cases by acquired region from week 1 to week 40, 2014 (based on diagnosed week as of October 8, 2014).

Domestic cases Imported cases Unspecified Unknown

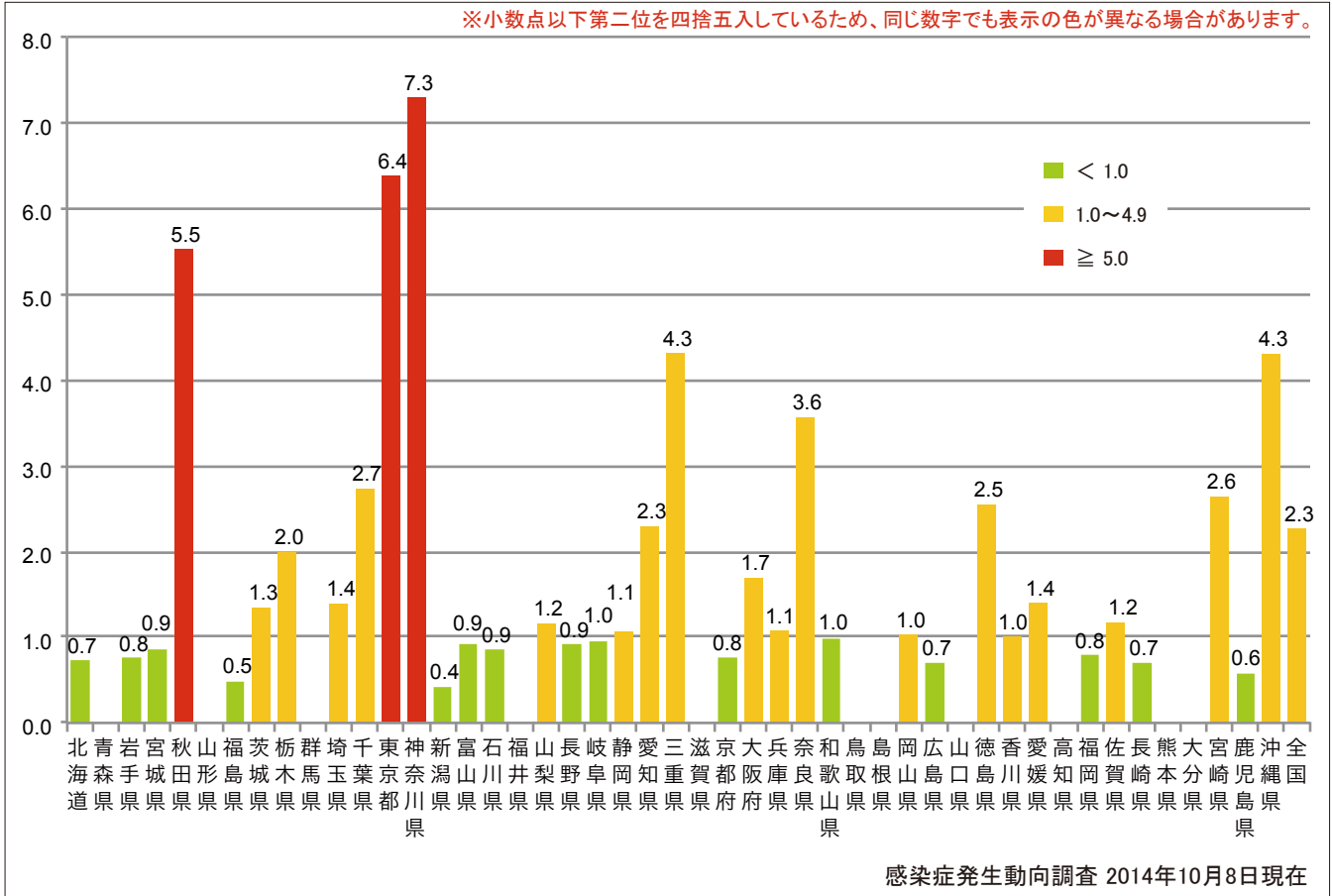


8. 都道府県別人口百万人あたり風しん報告数 2014年 第1~40週 (n=290)

Number of reported cases per 1 million population by prefectures from week 1 to week 40, 2014 (as of October 8, 2014).

■ < 1.0 ■ 1.0~4.9 ■ ≥ 5.0

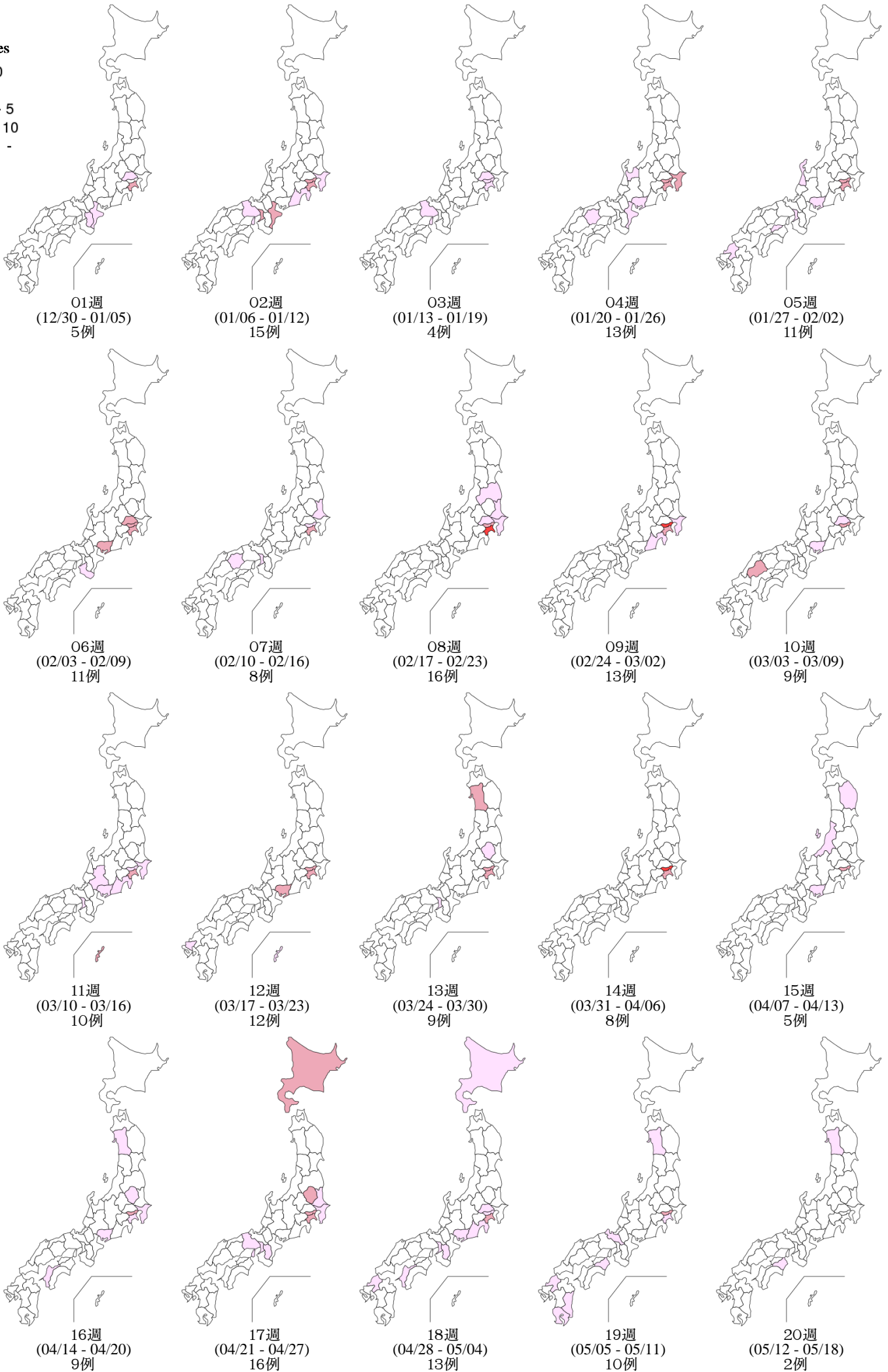
※小数点以下第二位を四捨五入しているため、同じ数字でも表示の色が異なる場合があります。



9. 都道府県別風しん週別報告状況 2014年 第1~40週 感染症発生動向調査

2014年10月08日現在

Weekly rubella cases from week 1 to week 40, 2014 (based on diagnosed week as of October 08, 2014)



9. 都道府県別風しん週別報告状況 2014年 第1~40週 感染症発生動向調査

2014年10月08日現在

Weekly rubella cases from week 1 to week 40, 2014 (based on diagnosed week as of October 08, 2014)

