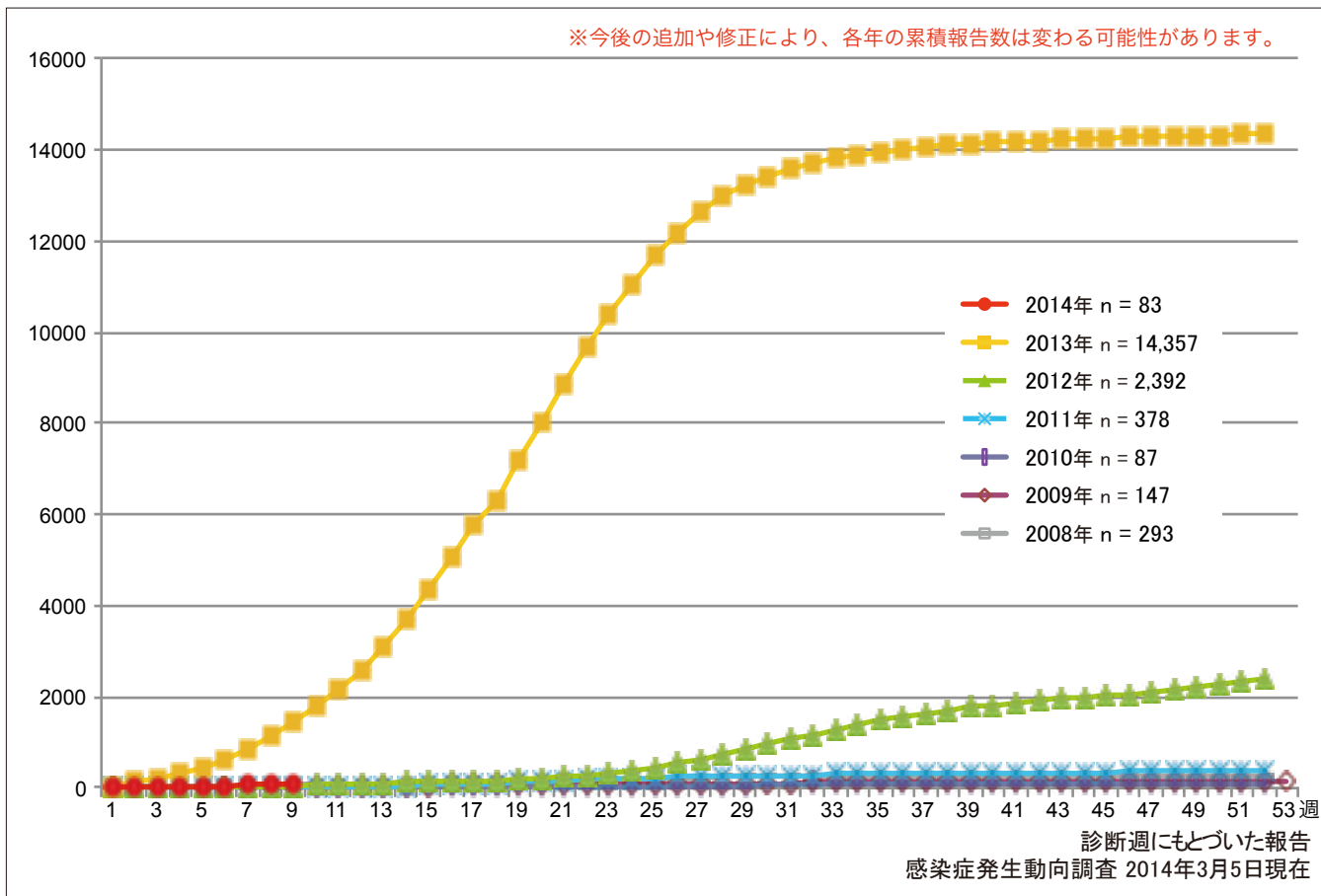


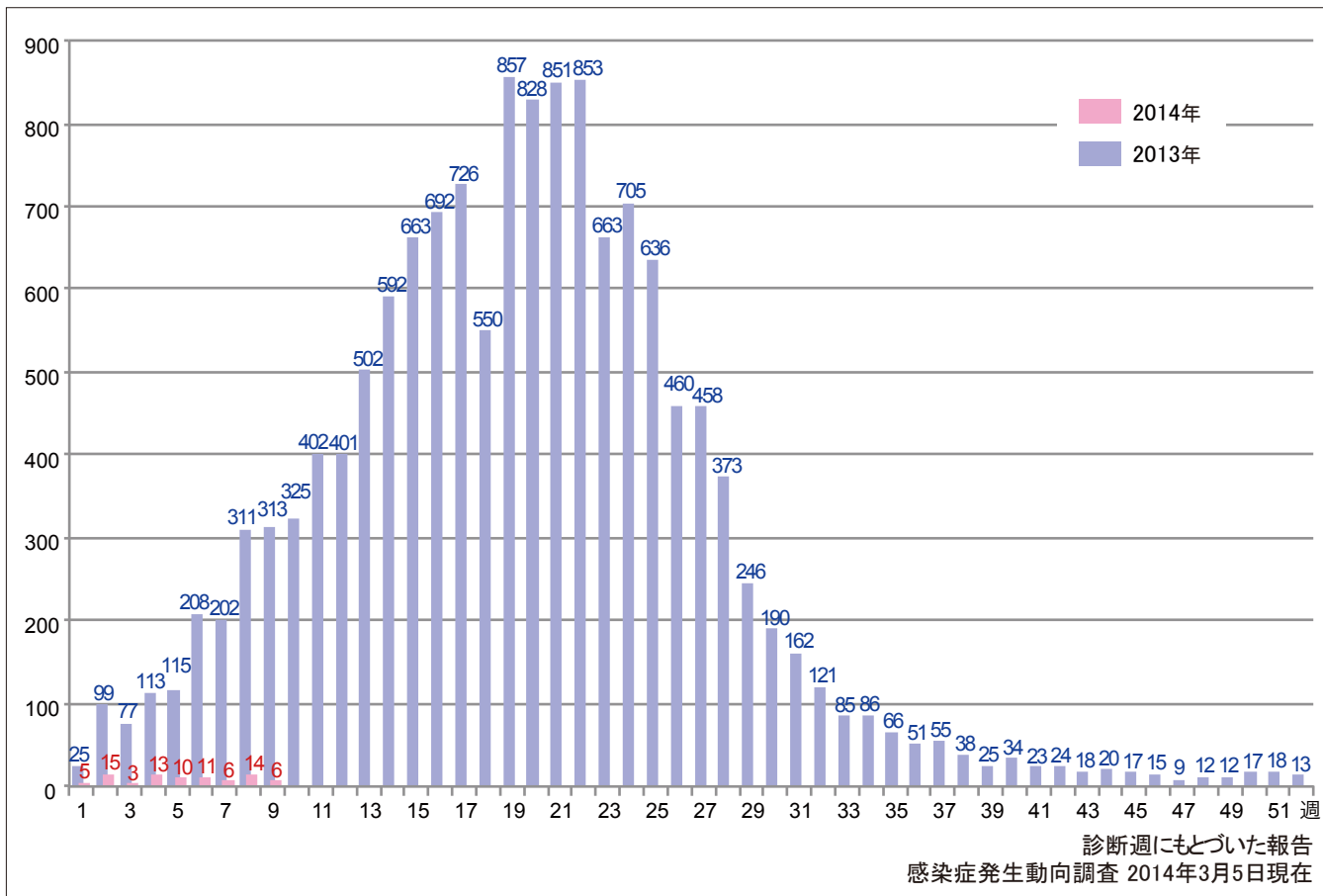
1. 風しん累積報告数の推移 2008～2014年(第1～9週)

Cumulative number of rubella cases by week, 2008-2014 (week1-9)
 (based on diagnosed week as of March 5, 2014).



2. 週別風しん報告数 2014年 第1～9週 (n=83)

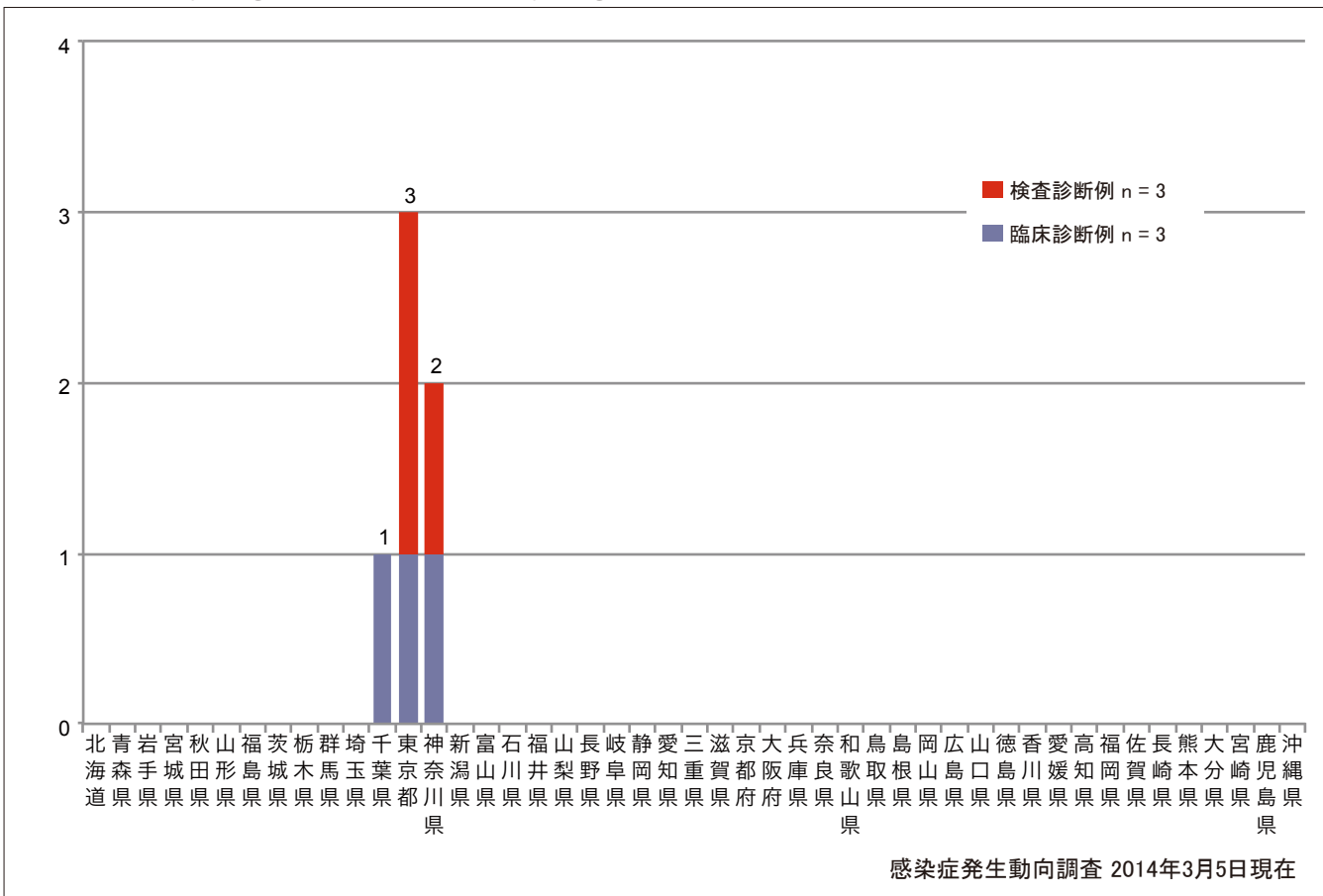
Weekly rubella cases from week 1 to week 9, 2014 (based on diagnosed week as of March 5, 2014).



3. 都道府県別病型別風しん報告数 2014年 第9週 (n=6)

Reported rubella cases by prefecture and methods of diagnosis in week 9, 2014
(as of March 5, 2014).

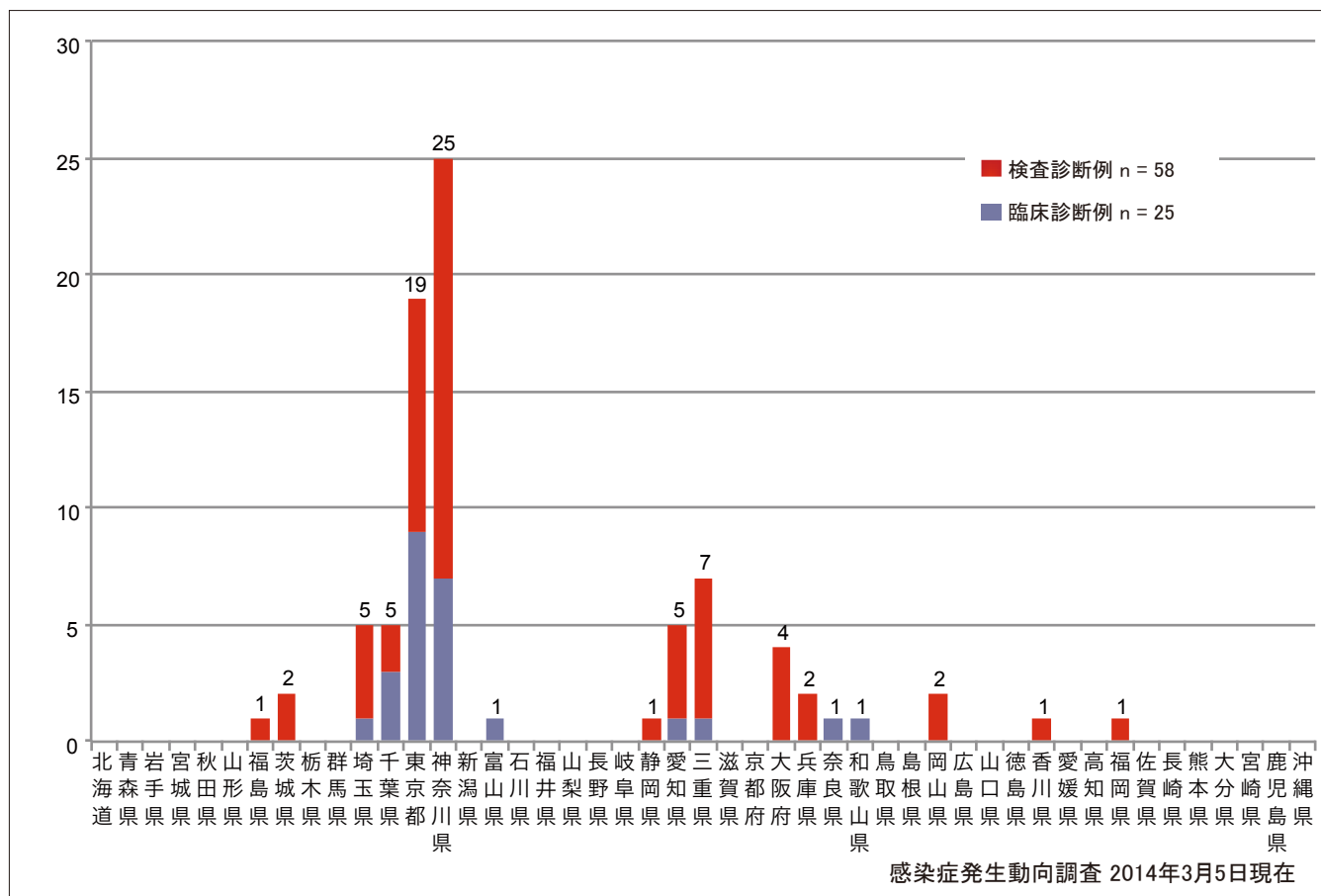
■ Clinically diagnosed ■ Laboratory diagnosed



4. 都道府県別病型別風しん累積報告数 2014年 第1~9週 (n=83)

Cumulative rubella cases by prefecture and methods of diagnosis from week 1 to week 9, 2014
(as of March 5, 2014).

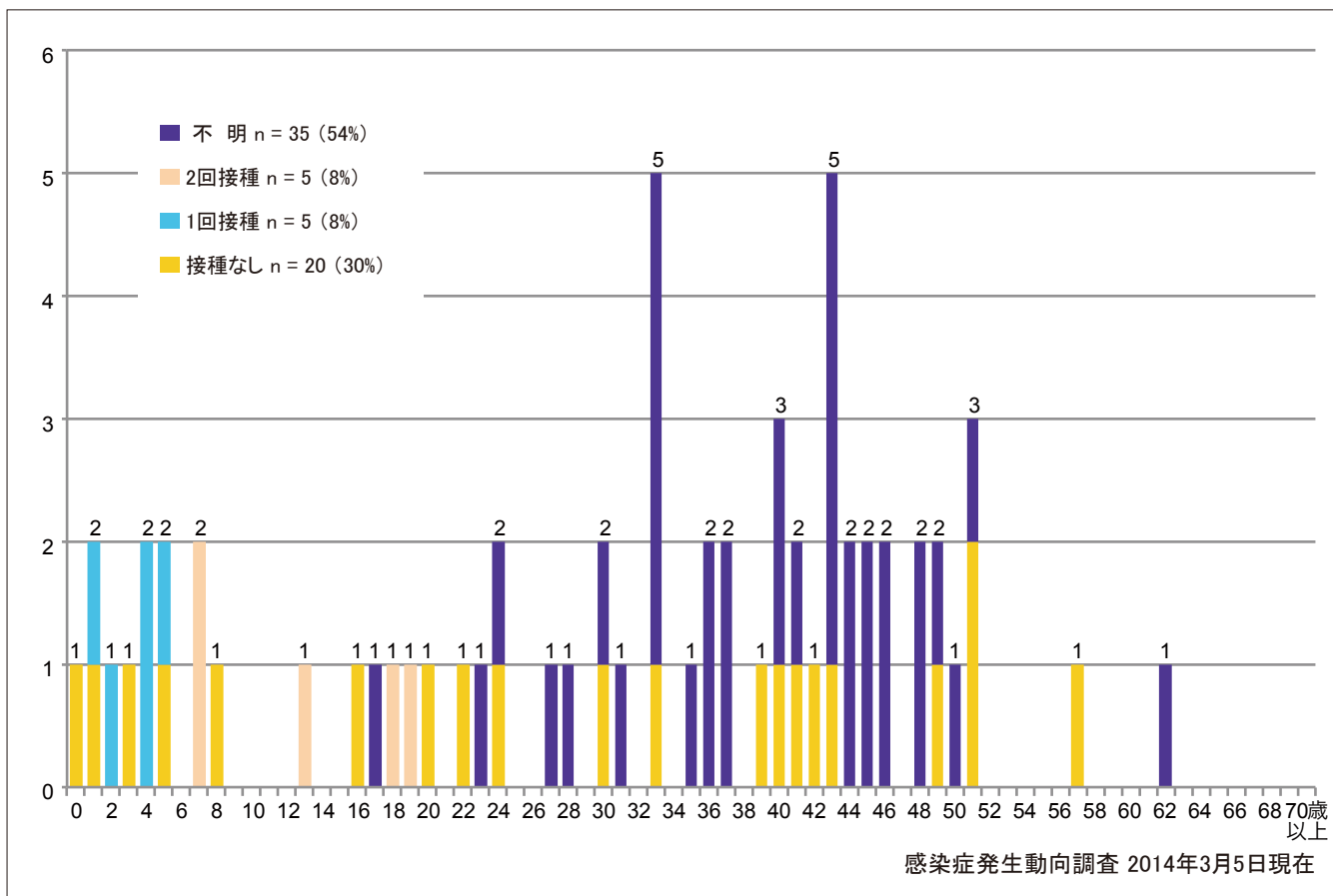
■ Clinically diagnosed ■ Laboratory diagnosed



5-1. 年齢群別接種歴別風しん累積報告数(男性) 2014年 第1~9週(n=65)

Cumulative rubella cases (male) by age and vaccinated status from week 1 to week 9, 2014 (as of March 5, 2014).

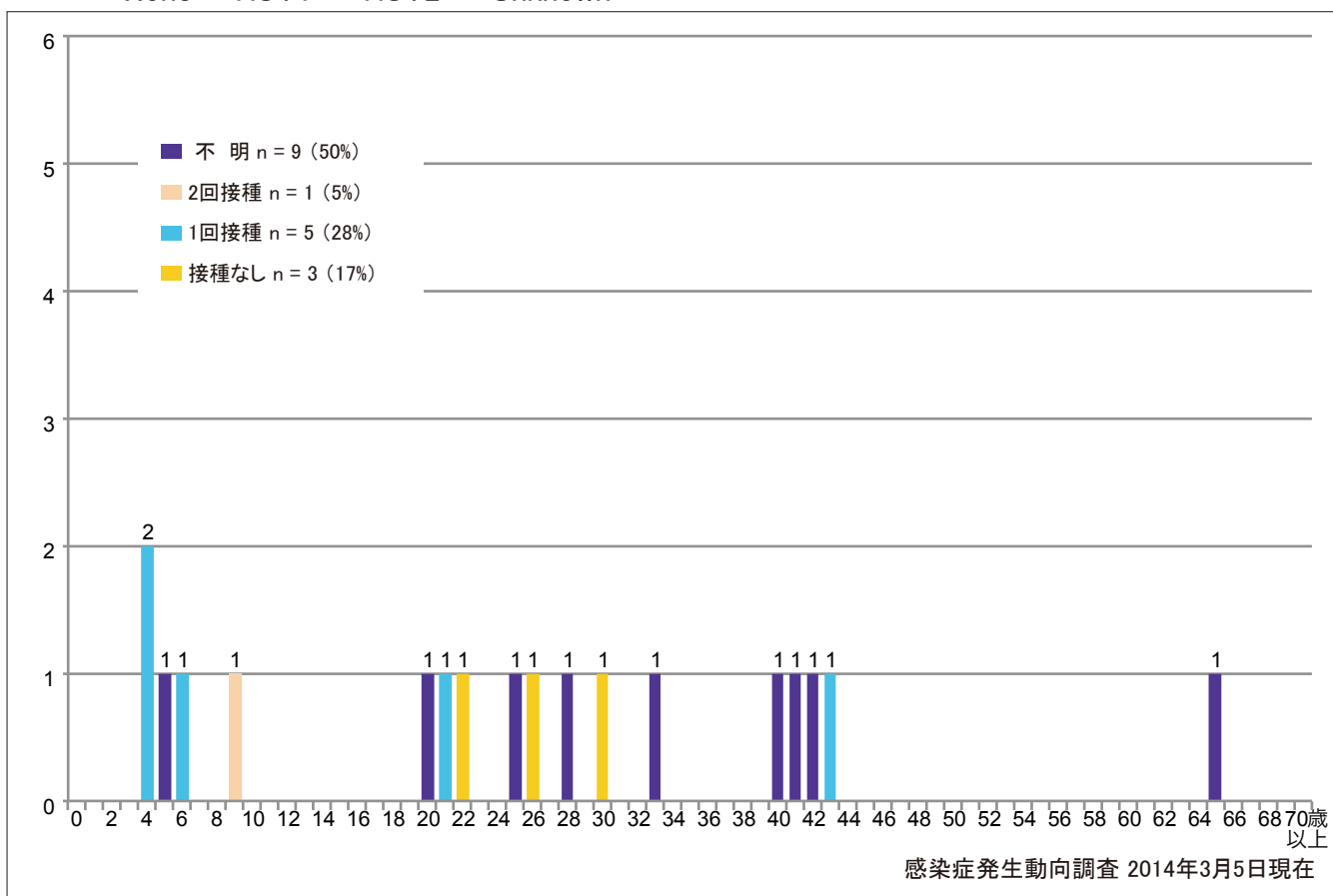
■ None ■ RCV1 ■ RCV2 ■ Unknown



5-2. 年齢群別接種歴別風しん累積報告数(女性) 2014年 第1~9週(n=18)

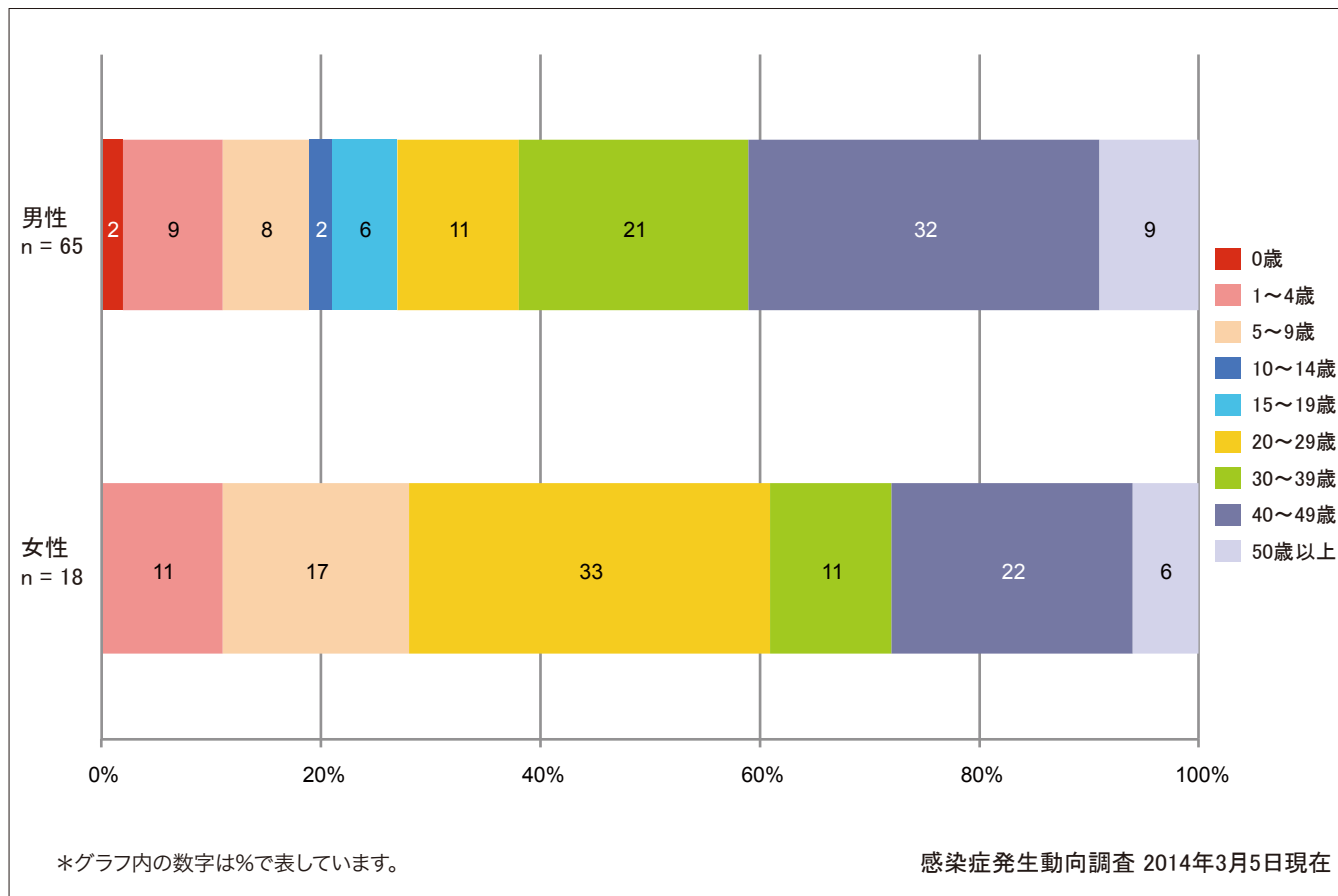
Cumulative rubella cases (female) by age and vaccinated status from week 1 to week 9, 2014 (as of March 5, 2014).

■ None ■ RCV1 ■ RCV2 ■ Unknown



6. 年齢群別風しん累積報告数割合(男女別) 2014年 第1~9週(n=83)

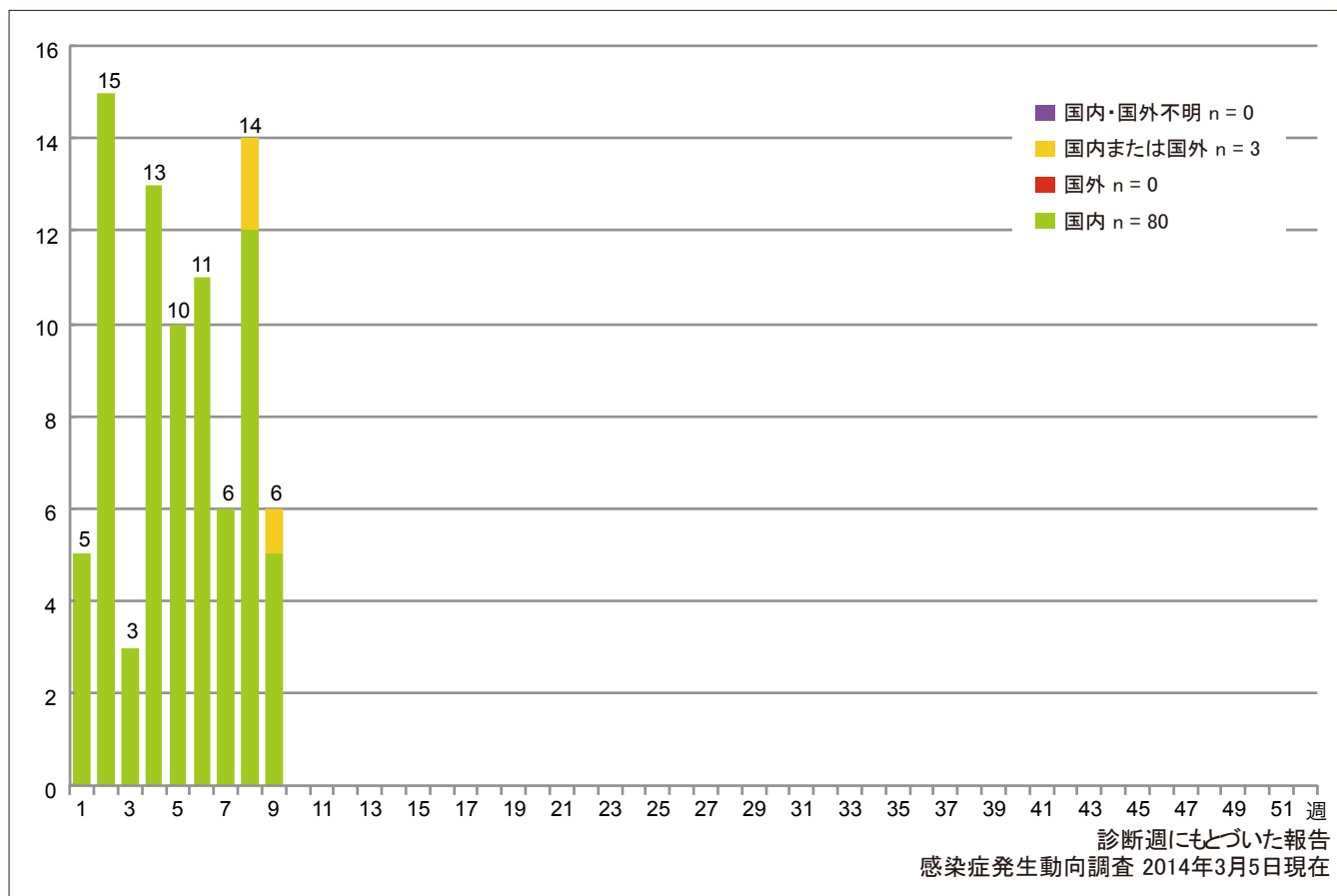
Percentage of cumulative rubella cases (upper: male, bottom: female) by age group from week 1 to week 9, 2014 (as of March 5, 2014).



7. 週別推定感染地域(国内・外)別風しん報告数 2014年 第1~9週(n=83)

Weekly rubella cases by acquired region from week 1 to week 9, 2014 (based on diagnosed week as of March 5, 2014).

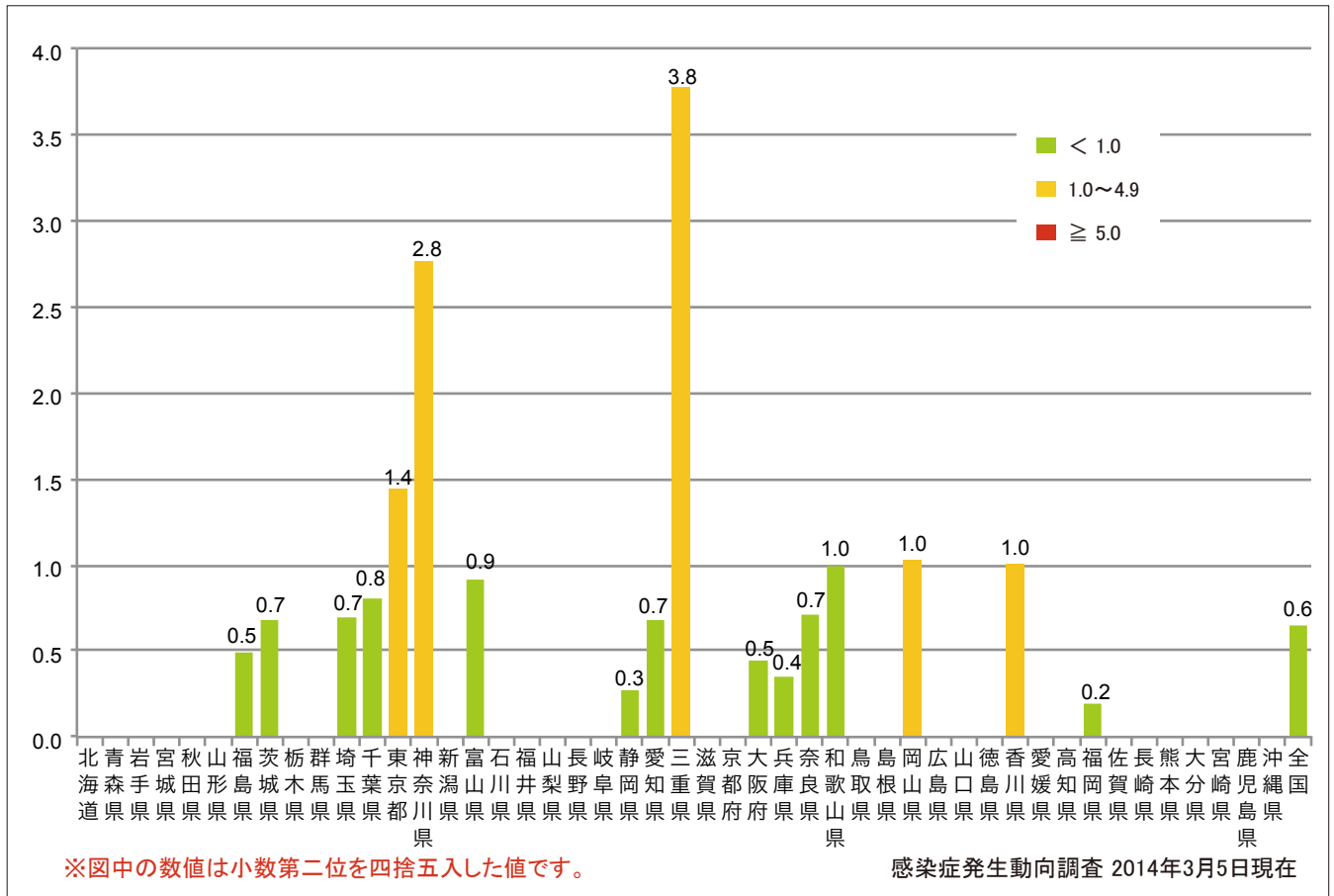
■ Domestic cases ■ Imported cases ■ Unspecified ■ Unknown



8. 都道府県別人口百万人あたり風しん報告数 2014年 第1~9週 (n=83)

Number of reported cases per 1 million population by prefectures from week 1 to week 9, 2014 (as of March 5, 2014).

■ <1.0 ■ 1.0~4.9 ■ ≥5.0



9. 都道府県別風しん週別報告状況 2014年 第1~09週 感染症発生動向調査

2014年03月05日現在

Weekly rubella cases from week 1 to week 09, 2014 (based on diagnosed week as of March 05, 2014)

報告数
No. of cases

