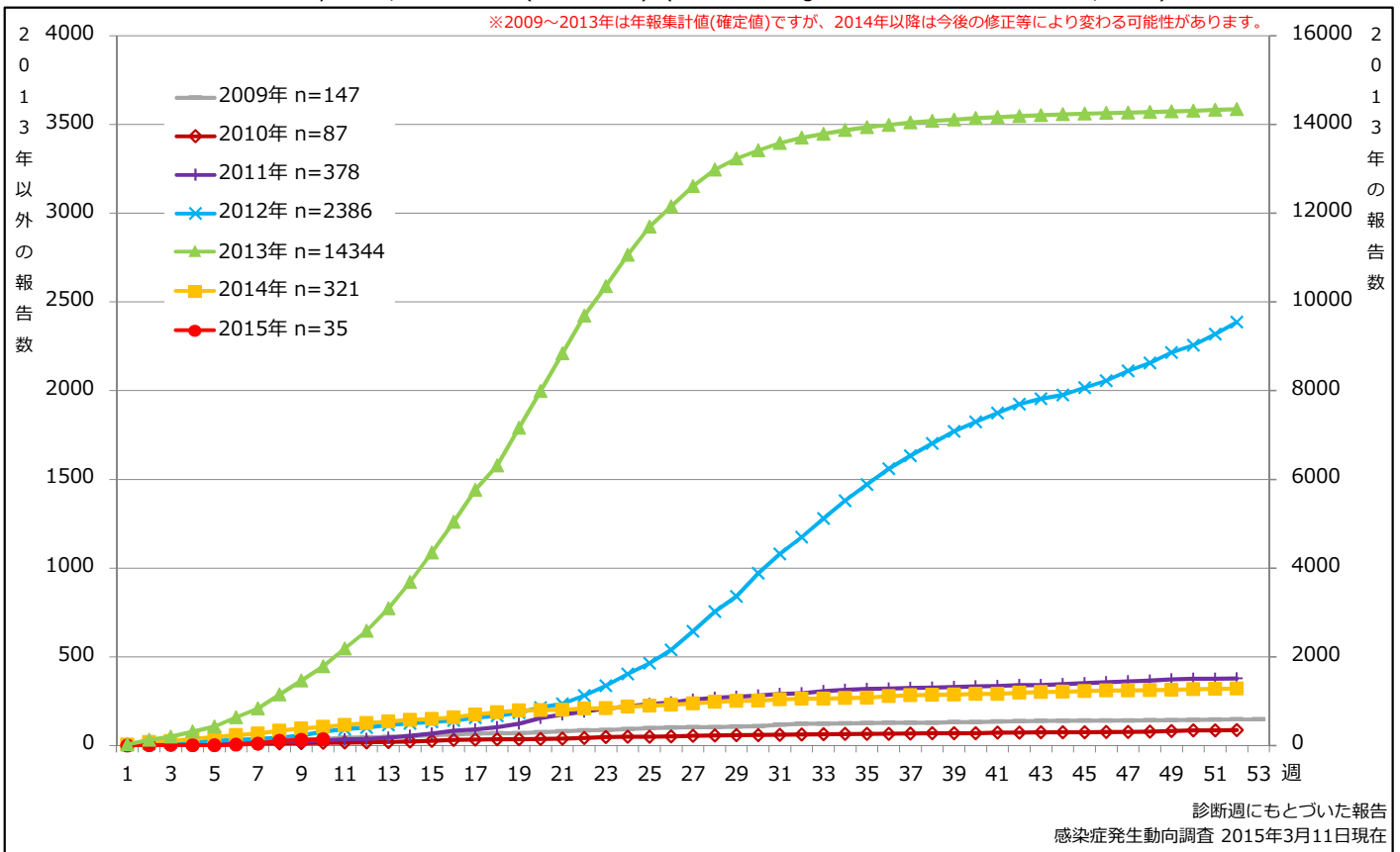


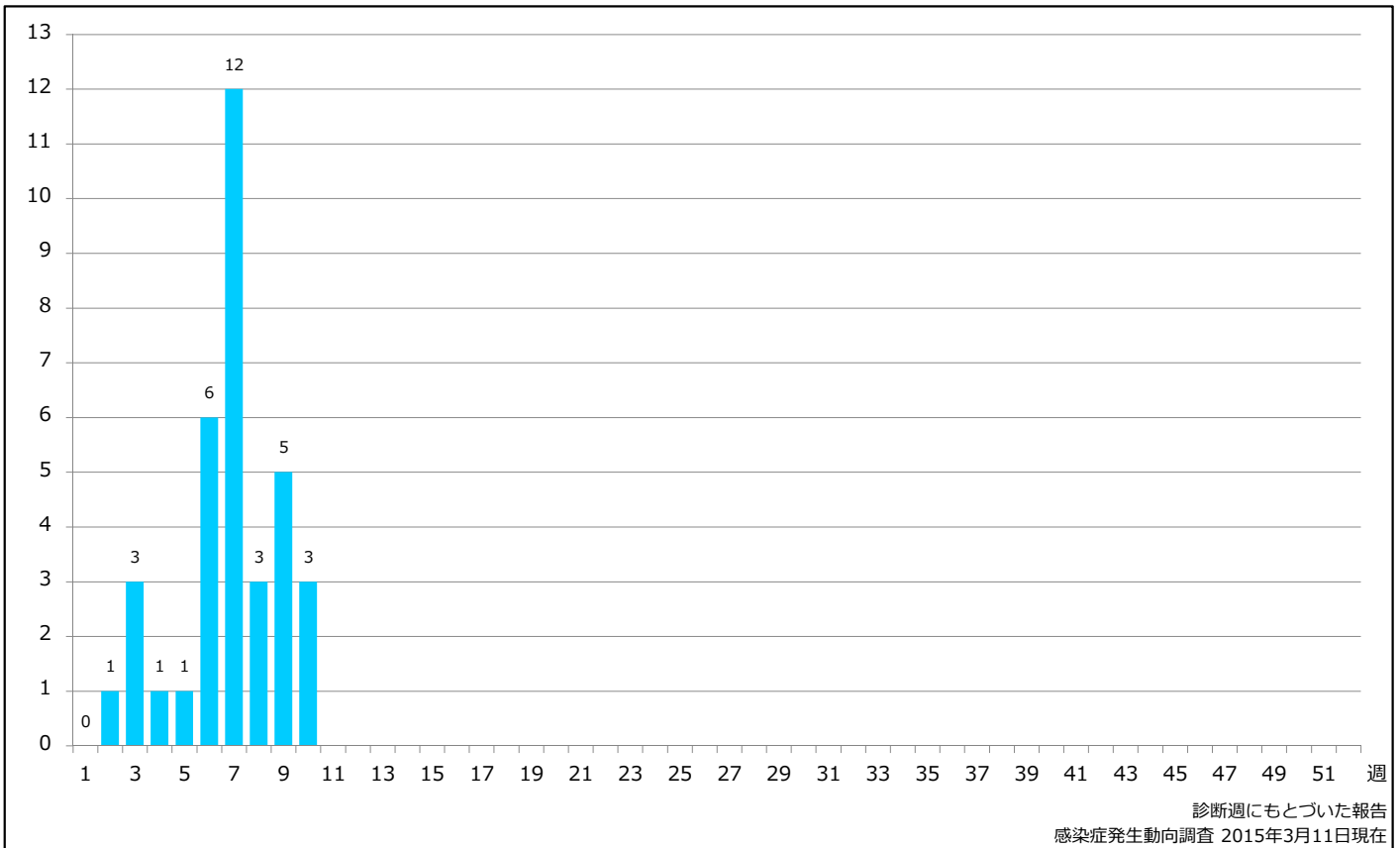
## 1. 風しん累積報告数の推移 2009～2015年 (第1～10週)

Cumulative rubella cases by week, 2009-2015 (week 1-10) (based on diagnosed week as of March 11, 2015)



## 2. 週別風しん報告数 2015年 第1～10週 (n=35)

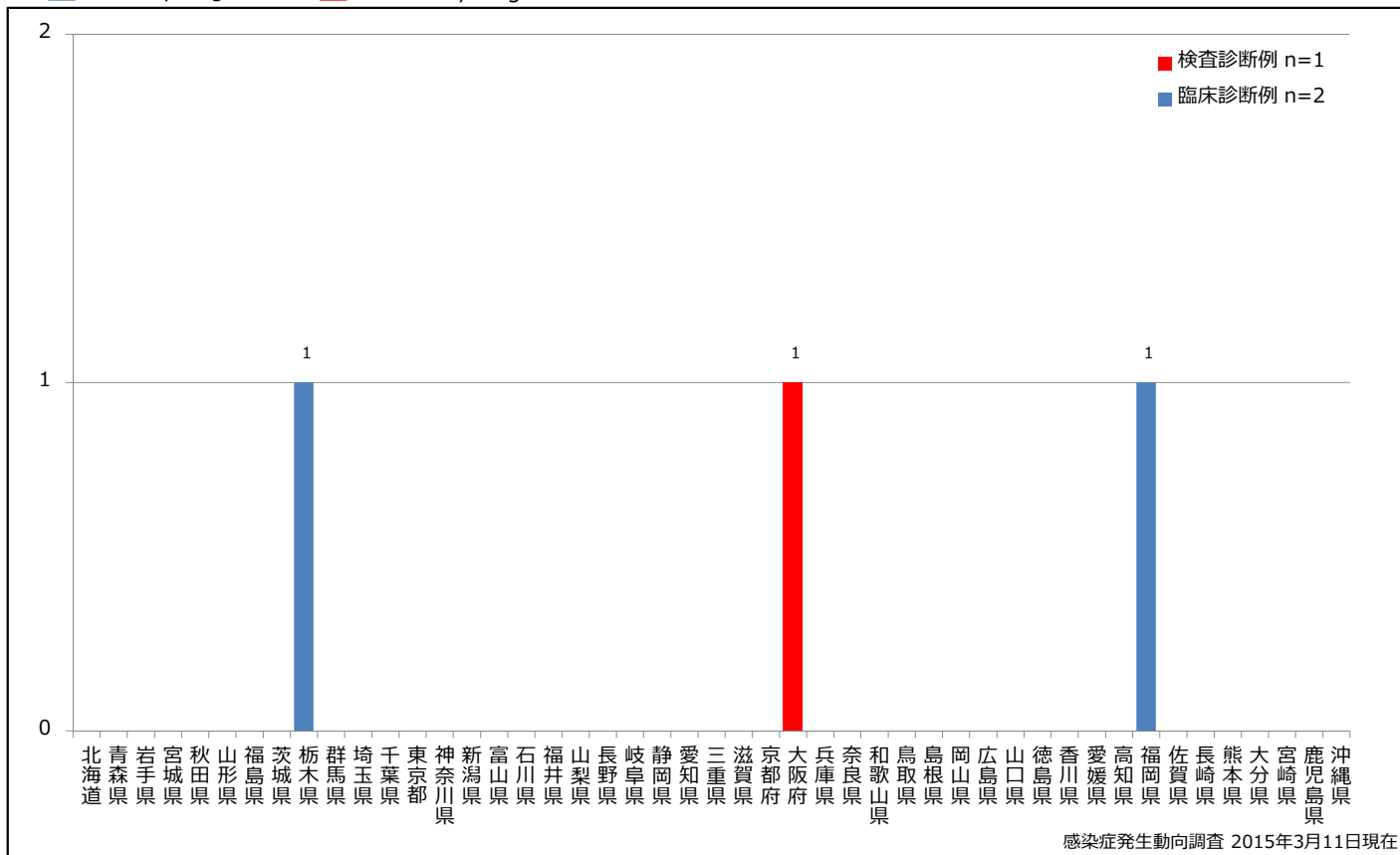
Weekly rubella cases, week 1-10, 2015 (based on diagnosed week as of March 11, 2015)



### 3. 都道府県別病型別風しん報告数 2015年 第10週 (n=3)

Reported rubella cases by prefecture and methods of diagnosis in week 10, 2015 (as of March 11, 2015)

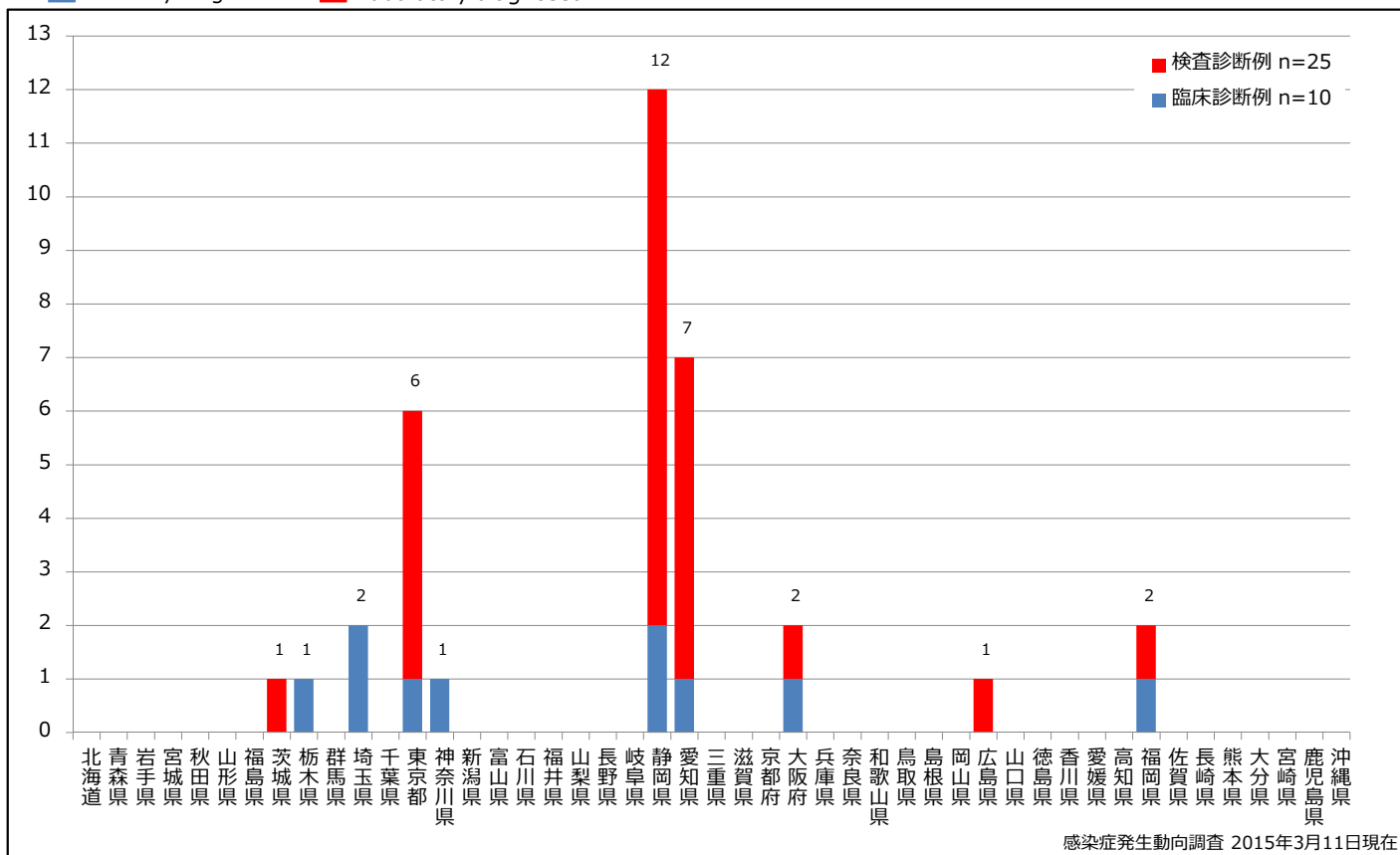
■ Clinically diagnosed ■ Laboratory diagnosed



### 4. 都道府県別病型別風しん累積報告数 2015年 第1~10週 (n=35)

Cumulative rubella cases by prefecture and methods of diagnosis, week 1-10, 2015 (as of March 11, 2015)

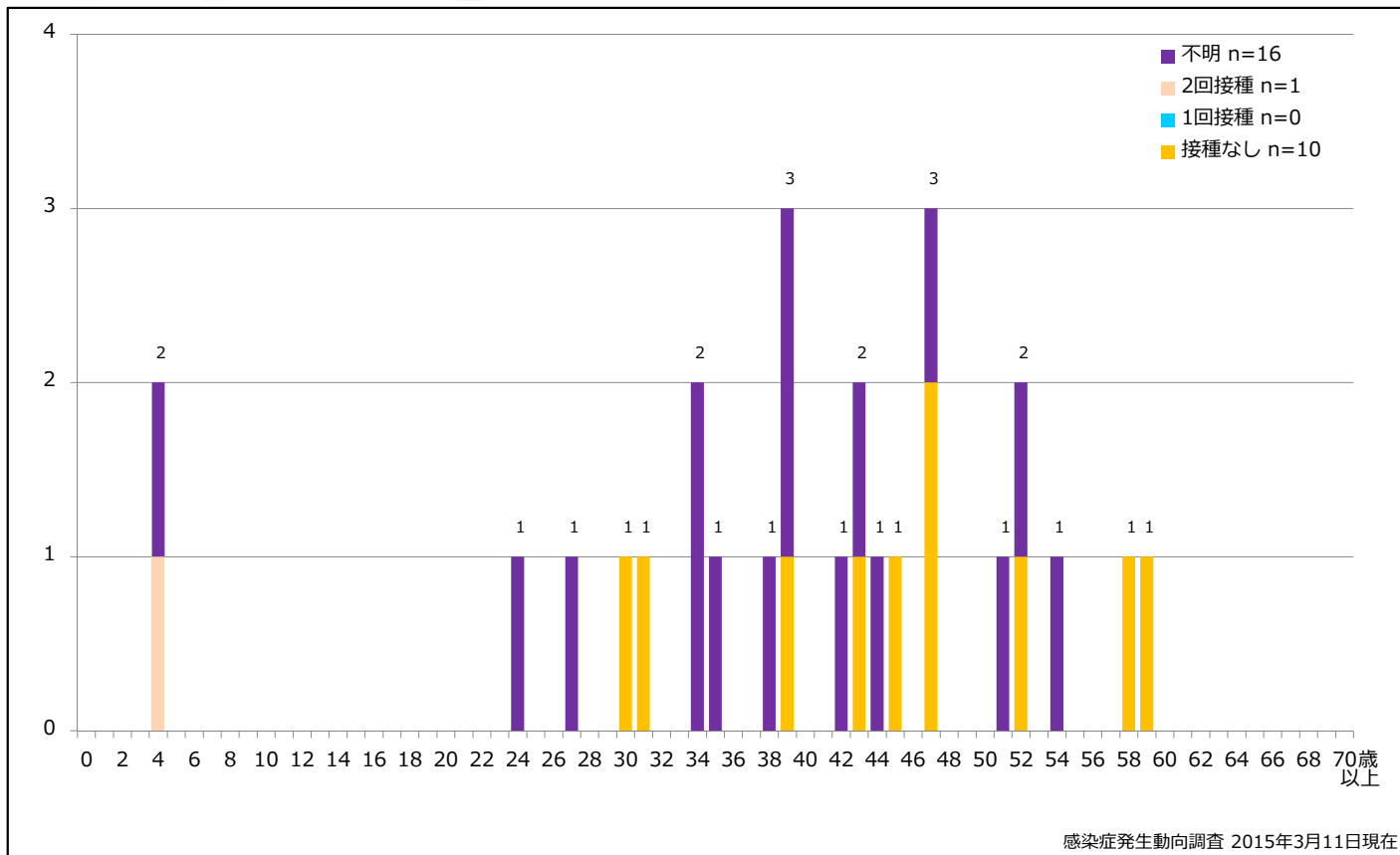
■ Clinically diagnosed ■ Laboratory diagnosed



### 5-1. 年齢群別接種歴別風しん累積報告数 (男性) 2015年 第1~10週 (n=27)

Cumulative rubella cases (male) by age and vaccinated status, week 1-10, 2015 (as of March 11, 2015)

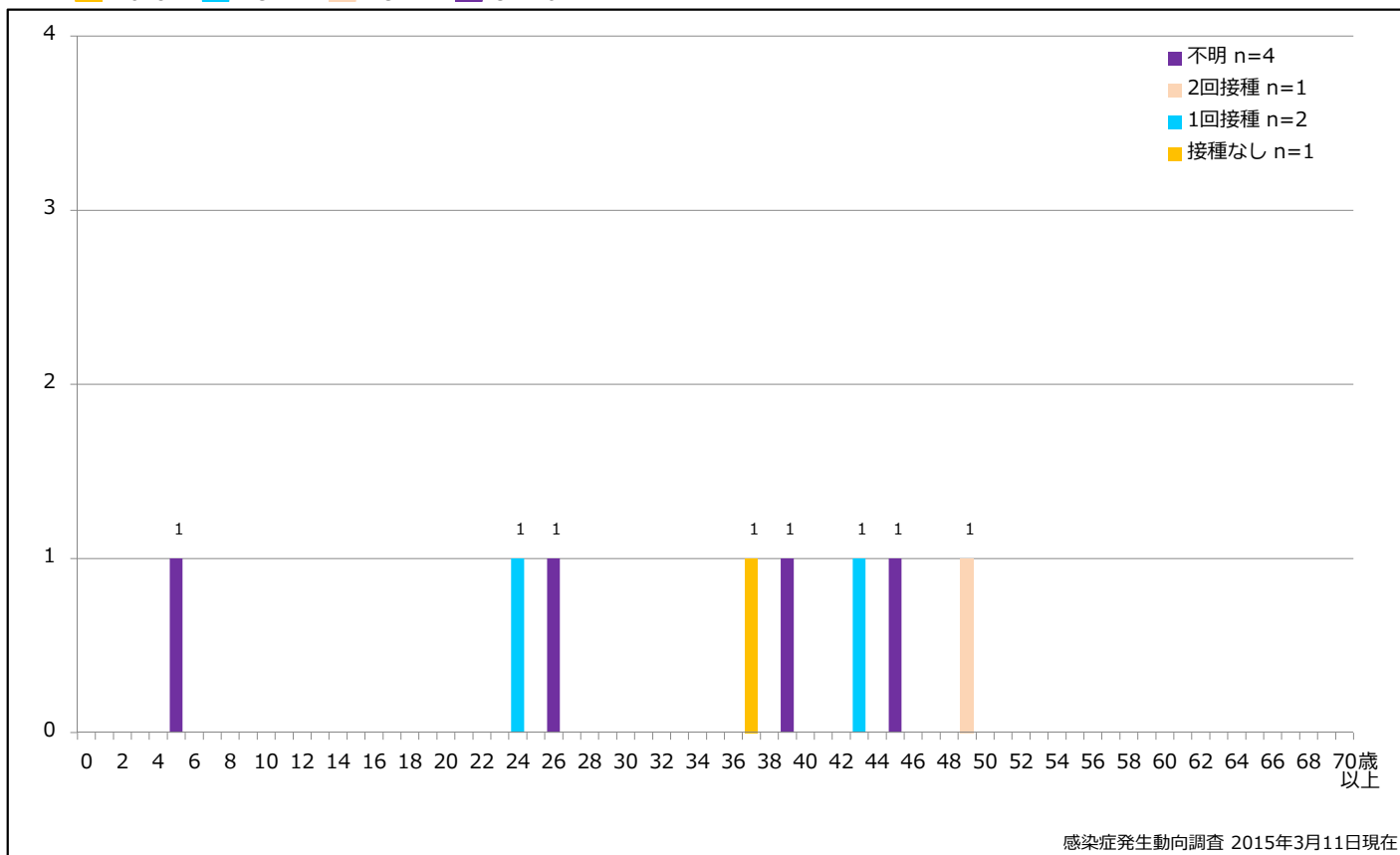
None RCV1 RCV2 Unknown



### 5-2. 年齢群別接種歴別風しん累積報告数 (女性) 2015年 第1~10週 (n=8)

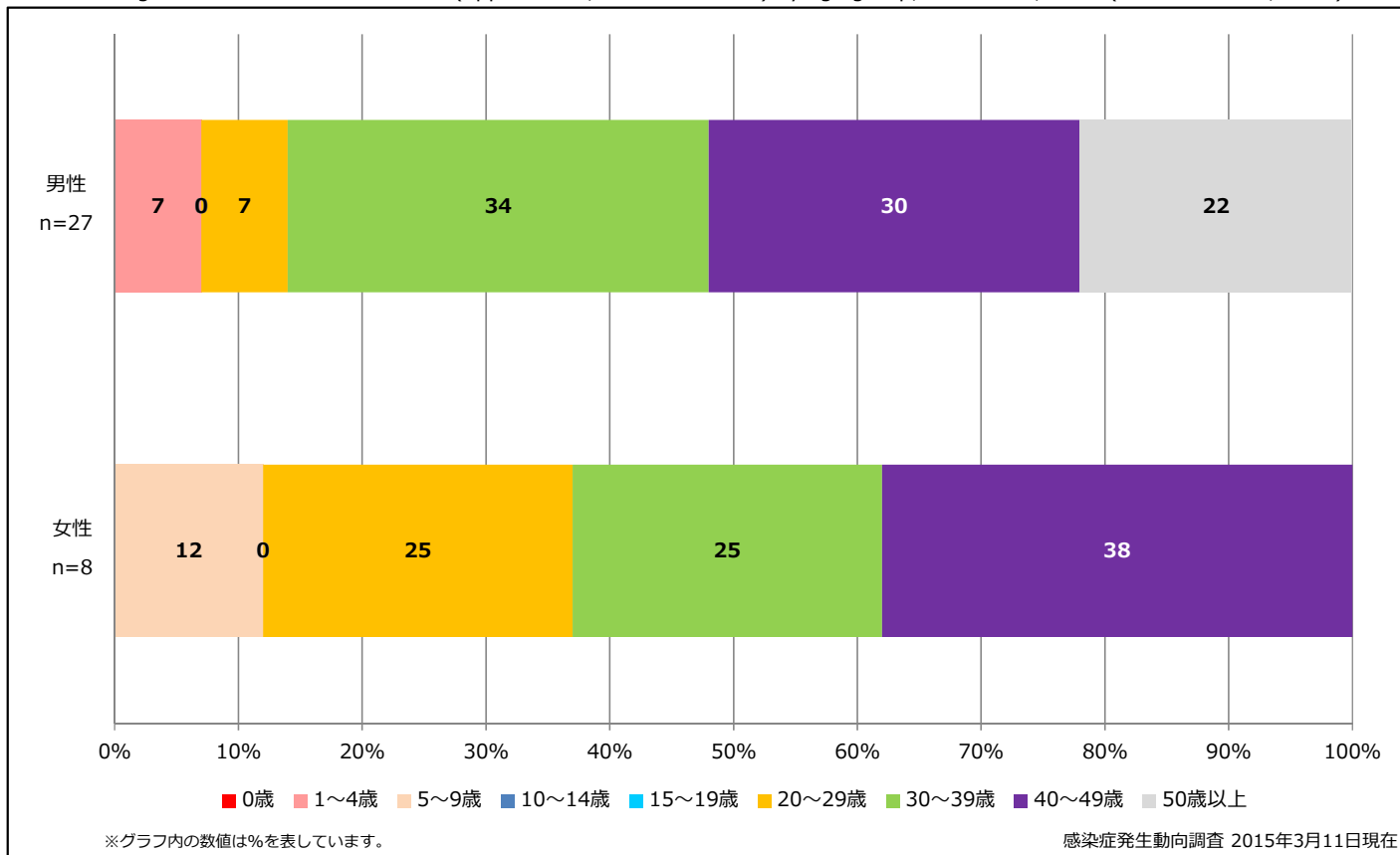
Cumulative rubella cases (female) by age and vaccinated status, week 1-10, 2015 (as of March 11, 2015)

None RCV1 RCV2 Unknown



### 6. 年齢群別風しん累積報告数割合 (男女別) 2015年 第1~10週 (n=35)

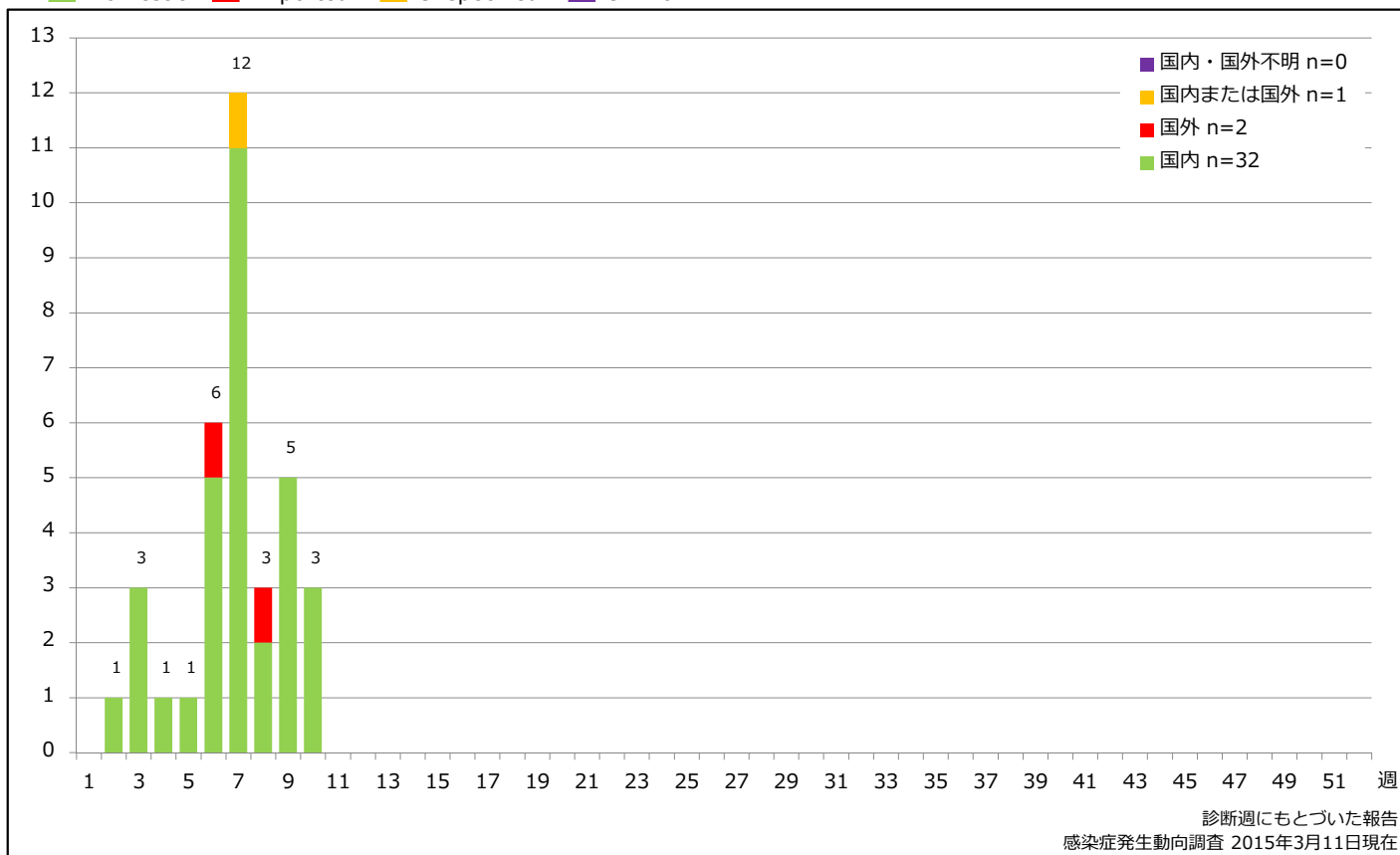
Percentage of cumulative rubella cases (upper: male, bottom: female) by age group, week 1-10, 2015 (as of March 11, 2015)



### 7. 週別推定感染地域(国内・外)別風しん報告数 2015年 第1~10週 (n=35)

Weekly rubella cases by acquired region, week 1-10, 2015 (based on diagnosed week as of March 11, 2015)

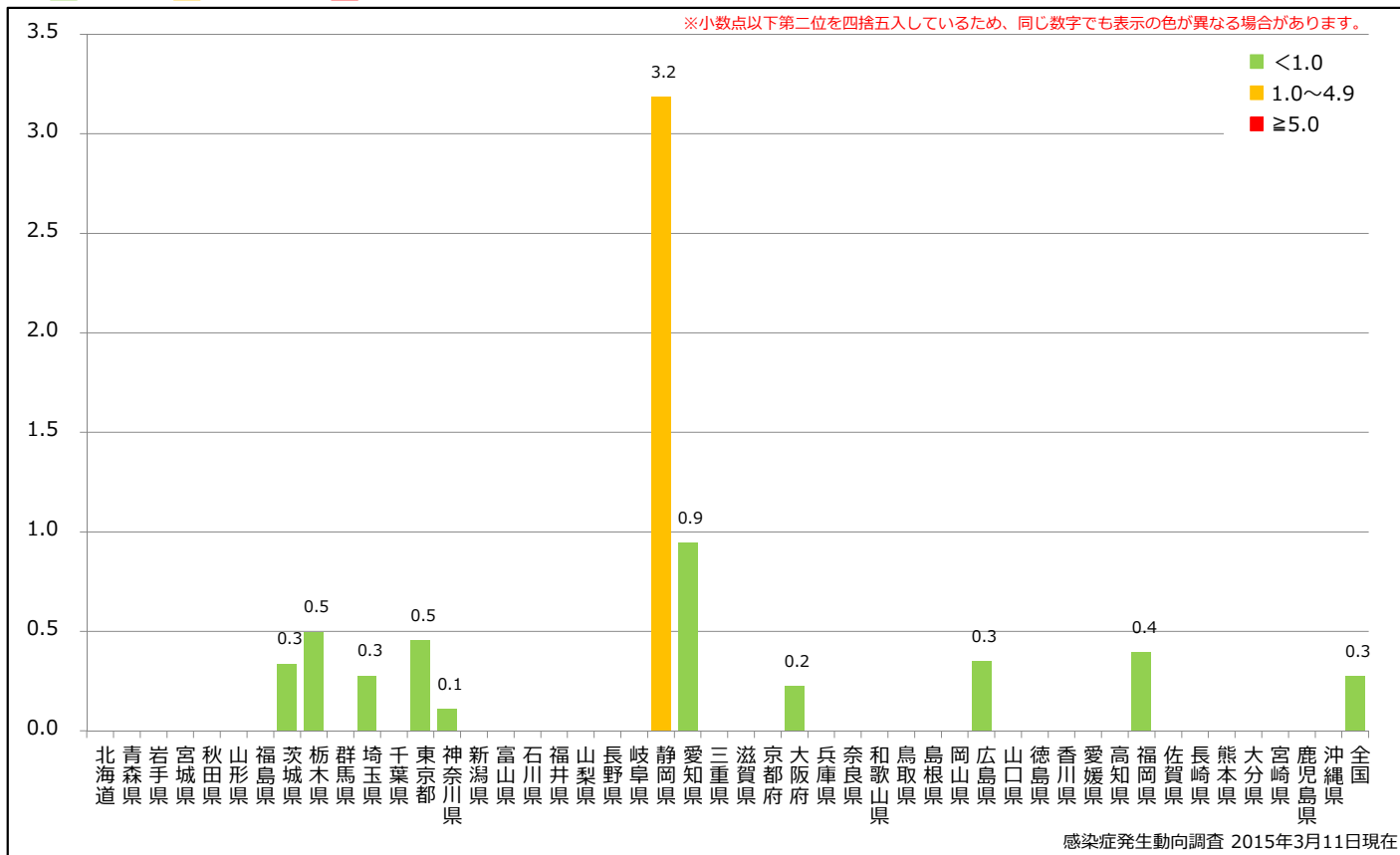
Domestic Imported Unspecified Unknown



### 8. 都道府県別人口百万人あたり風しん報告数 2015年 第1~10週 (n=35)

Reported rubella cases per 1 million population by prefecture, week 1-10, 2015 (as of March 11, 2015)

■ <1.0   ■ 1.0~4.9   ■ ≥5.0



9. 都道府県別風しん週別報告状況 2015年 第1~10週 感染症発生動向調査

2015年03月11日現在

Weekly rubella cases from week 01 to week 10, 2015 (based on diagnosed week as of March 11, 2015)

